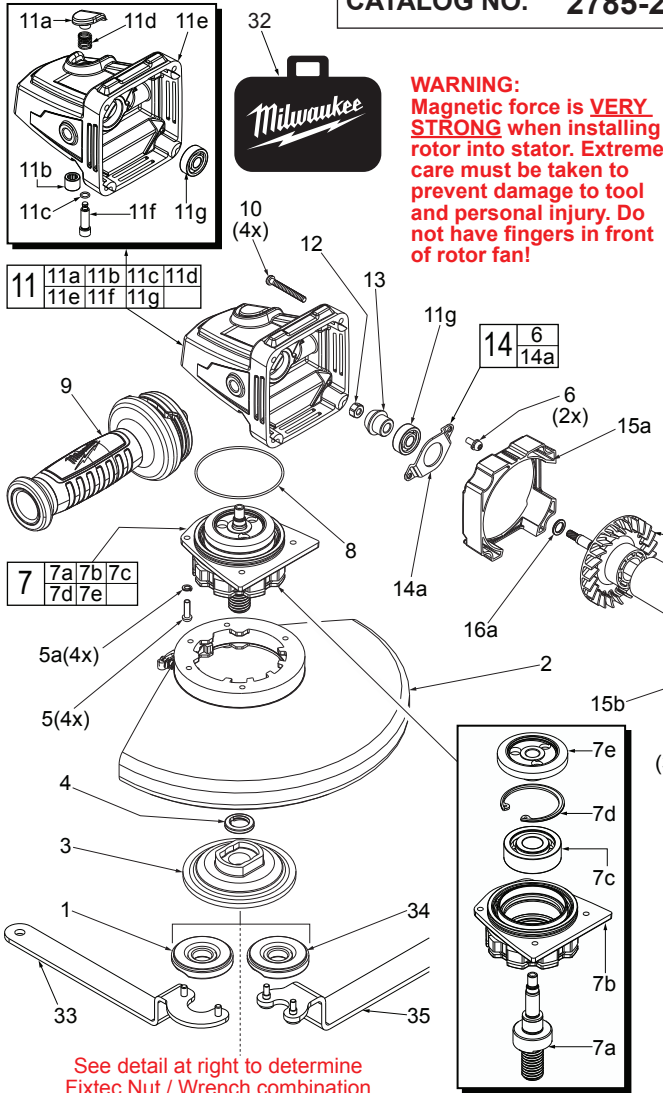




SERVICE PARTS LIST

BULLETIN NO.
54-38-2780

SPECIFY CATALOG NO. AND SERIAL NO. WHEN ORDERING PARTS		REVISED BULLETIN
M18 FUEL™ 7"/9" Large Angle Grinder		
CATALOG NO. 2785-20	STARTING SERIAL NO.	J59A



WARNING:
Magnetic force is **VERY STRONG** when installing rotor into stator. Extreme care must be taken to prevent damage to tool and personal injury. Do not have fingers in front of rotor fan!

FIG.	PART NO.	DESCRIPTION OF PART	NO. REQ.
16	16-01-2785	Rotor Assembly	(1)
16a	45-88-0406	Washer	(1)
17	05-88-0082	K45 x 49mm Pan Hd. T-20 PT Screw	(3)
18	45-88-0010	Washer	(3)
20	14-20-2800	Grounding Assembly	(1)
22	12-20-0123	Service Nameplate	(1)
23	14-20-2785	Electronics Assembly	(1)
23b	23-66-2785	On-Off Switch Assembly with Screws	(1)
25	06-82-0126	M2.3 x 5mm PWH Tapt. T-6 Screw	(1)
26	22-56-0150	Closed End Terminal	(1)
27	14-34-2785	Rear Handle/Housing Kit	(1)
27a	-----	Left Handle/Housing Halve - Support	(1)
27b	-----	Right Handle/Housing Halve - Cover	(1)
27c	05-81-1195	M3 x 8mm Pan Hd. ST T-10 Screw	(4)
27d	06-82-0011	M4 x 20mm Pan Hd. ST T-20 Screw	(5)
27e	05-88-0780	M3 x 18mm Pan Hd. ST T-10 Screw	(2)
28	31-15-0072	Vent Clip Assembly	(1)
32	48-55-3565	M18 FUEL Large Contractor Bag	(1)
33	49-96-0002	Spanner Wrench	(1)
34	05-59-0016	5/8"-11 Fixtec Nut	(1)
35	49-96-0004	Spanner Wrench	(1)

See detail at right to determine Fixtec Nut / Wrench combination

FIG.	PART NO.	DESCRIPTION OF PART	NO. REQ.
1	05-59-0015	5/8"-11 Fixtec Nut	(1)
2	49-12-0010	7" Type 27 Wheel Guard Assy. (Not Shown)	(1)
2	49-12-0020	9" Type 27 Wheel Guard Assembly	(1)
2	49-12-0230	7" Type 1 Wheel Guard Assy. (Not Shown)	(1)
2	49-12-0240	9" Type 1 Wheel Guard Assy. (Not Shown)	(1)
3	43-34-0825	Type 27 Backing Flange	(1)
3	43-35-0925	Type 1 Backing Flange (Not Shown)	(1)
4	45-88-8466	5/8"-11 Spindle Washer	(1)
5	05-88-1210	M4 x 14mm Pan Hd. T-20 Mach. Scr.	(4)
5a	05-90-0225	Lock Washer	(4)
6	06-81-0003	M4 x 10mm Pan Hd. Sems T-20 Mach. Scr.	(2)
7	14-73-0005	Spindle Hub Assembly	(1)
7a	-----	5/8"-11 Spindle	(1)
7b	-----	Spindle Hub	(1)
7c	-----	Ball Bearing	(1)
7d	-----	Retaining Ring	(1)
7e	-----	Bevel Gear	(1)
8	34-40-0262	O-Ring	(1)
9	42-62-0125	AVS Side Handle	(1)
10	06-81-5376	M4 x 34mm Pan Hd. ST T-20 Screw	(4)
11	14-30-2785	Gearcase Assembly	(1)
11a	42-42-0525	Spindle Lock Button	(1)
11b	02-50-0025	Needle Bearing	(1)
11c	34-40-0450	O-Ring	(1)
11d	40-50-1330	Spindle Lock Spring	(1)
11e	-----	Gearcase	(1)
11f	42-60-0003	Spindle Lock Pin	(1)
11g	02-04-0620	Ball Bearing	(1)
12	05-55-0620	M5 Hex Nut	(1)
13	32-60-0165	Bevel Pinion	(1)
14	44-86-0192	Bearing Retainer Kit	(1)
14a	-----	Bearing Retainer	(1)
15	42-14-0037	Baffle Assembly	(1)
15a	-----	Baffle Scroll	(1)
15b	-----	Baffle Foot	(1)

05-59-0015

It is important to note that there are two different Fixtec Nut designs that can be used on the 2785-20 M18 FUEL Grinder. Each Fixtec Nut utilizes a spanner wrench that is unique to the nut.

05-59-0016

Fixtec Nut 05-59-0015 (1) must be used with Spanner Wrench 49-96-0002 (33). Fixtec Nut 05-59-0016 (34) must be used with Spanner Wrench 49-96-0004 (35).

Use this diagram to determine the nut and wrench design and order service parts accordingly.

When servicing, remove 90-95% of the existing grease prior to installing Type 'Y'. Original grease may be similar in color but not compatible with 'Y'. Clean gear assemblies with a clean, dry cloth.

LUBRICATION

Type 'Y' Grease, No. 49-08-5275 (14oz. tub)
Apply a liberal amount of grease, approximately 5 grams/.17oz. to the Bevel Gear (7e) and Bevel Pinion (13). Be sure that all gear teeth are coated.

Place approximately 25 grams/.88oz. of grease in the gear cavity of gearcase assembly (11).