

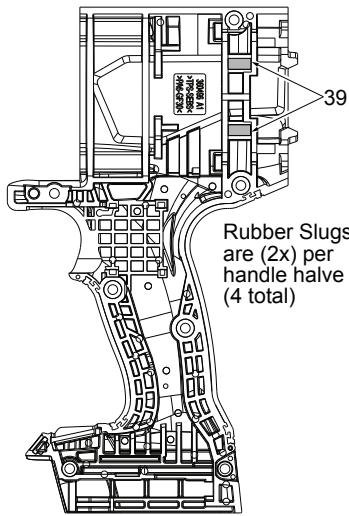


# SERVICE PARTS LIST

**BULLETIN NO.**  
**54-26-2840**

SPECIFY CATALOG NO. AND SERIAL NO. WHEN ORDERING PARTS		REVISED BULLETIN	DATE
<b>M18 FUEL™ 1/2" SQUARE IMPACT WRENCH with detent pin</b>			Apr. 2019
CATALOG NO.	<b>2766-20</b>	STARTING SERIAL NO.	<b>H95A</b>
		WIRING INSTRUCTION <b>See Page 2</b>	

**EXAMPLE:**  
Component Parts (Small #) Are Included  
When Ordering The Assembly (Large #).



Rubber Slugs are (2x) per handle half (4 total)

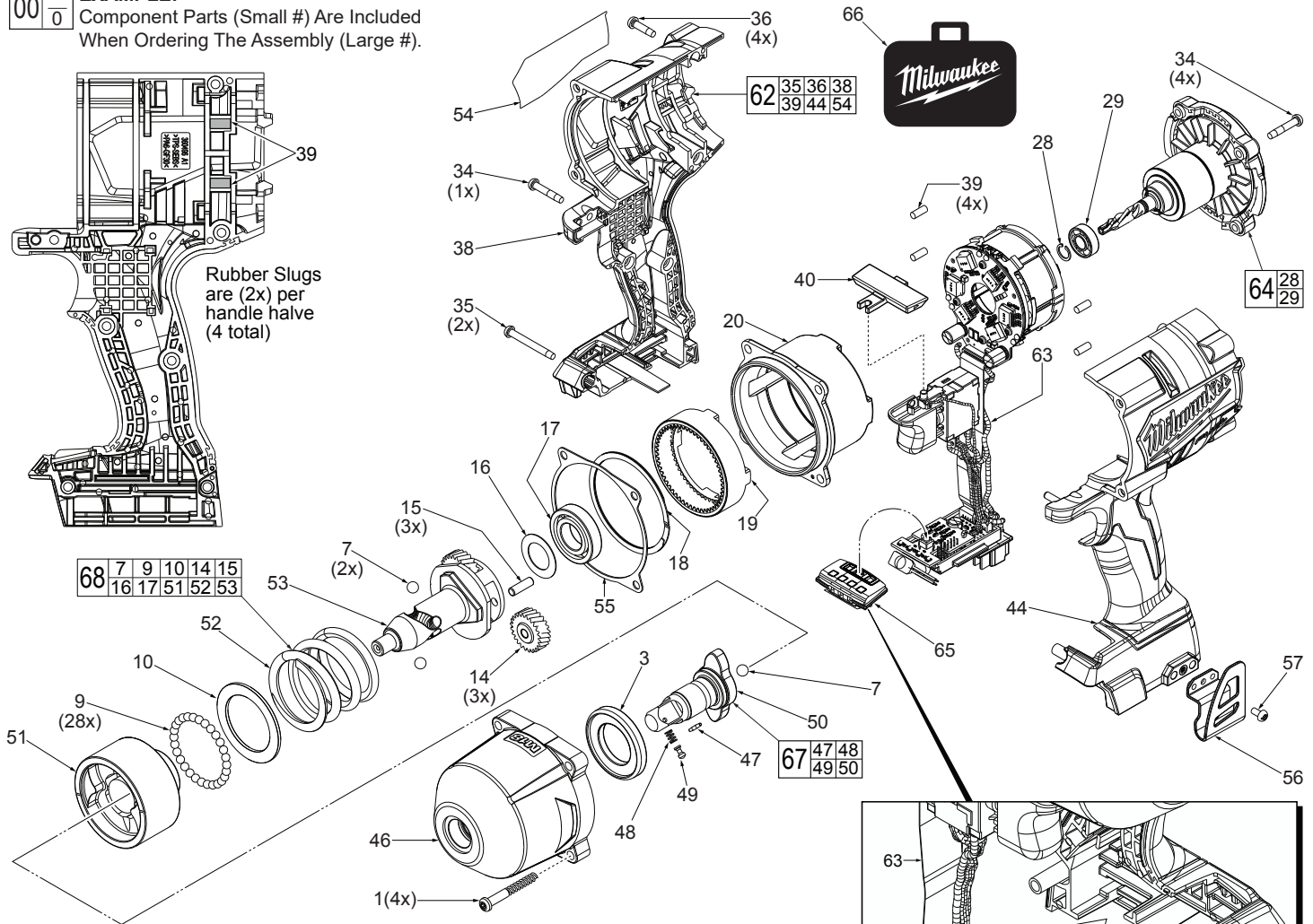
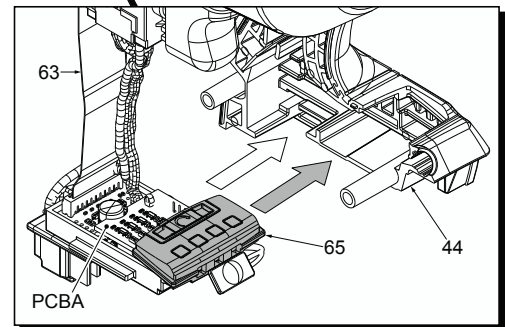


FIG.	PART NO.	DESCRIPTION OF PART	NO. REQ.
1	06-82-4000	M5 x 40mm Pan Hd. ST T-20 Screw	(4)
3	45-88-2005	Front Housing Washer	(1)
7	02-02-0251	6.6mm Steel Ball	(3)
9	02-02-2050	3/16" Steel Ball	(28)
10	45-88-2015	Washer	(1)
14	32-62-0500	Planet Gear	(3)
15	44-60-1960	Planet Pin	(3)
16	45-88-2020	Washer	(1)
17	02-04-0375	Ball Bearing	(1)
18	34-80-0650	Retaining Ring	(1)
19	32-65-0025	Ring Gear	(1)
20	44-66-4001	Rear Gear Case	(1)
28	34-60-0011	Retaining Ring	(1)
29	02-04-0155	Ball Bearing	(1)
34	06-82-4001	M4 x 22mm Pan Hd. ST T-20 Screw	(5)
35	06-82-4002	M4 x 35mm Pan Hd. ST T-20 Screw	(2)
36	06-82-4003	M4 x 16mm Pan Hd. ST T-20 Screw	(4)
38	-----	Housing Cover - Right	(1)
39	45-30-0255	Rubber Slug	(4)
40	45-24-0022	Forward / Reverse Shuttle	(1)
44	-----	Housing Support - Right with Metal Pin	(1)
46	14-30-0845	Front Housing Assembly with Bushing	(1)
47	44-60-0022	Solid Pin	(1)
48	40-50-0925	Detent Spring	(1)
49	44-60-0597	Detent Pin	(1)
50	-----	1/2" Square Anvil	(1)
51	43-81-0305	Hammer	(1)

FIG.	PART NO.	DESCRIPTION OF PART	NO. REQ.
52	40-50-1920	Hammer Spring	(1)
53	36-10-0905	Cam Shaft	(1)
54	12-20-2810	Service Nameplate	(1)
55	43-44-1420	Gasket	(1)
56	42-70-5151	Belt Hook	(1)
57	06-82-0130	6-32 x 5/16 Pan Hd. T-15 Machine Screw	(1)
62	31-44-3160	Housing Assembly	(1)
63	14-20-0925	Electronics Assembly	(1)
64	16-01-0400	Rotor/End Cap Assembly	(1)
65	45-24-0450	Speed Switch Assembly	(1)
66	42-55-2820	Carrying Case	(1)
67	42-06-2770	1/2" Square Anvil Assy. w/ Detent Pin	(1)
68	14-46-2810	Impacting Assembly	(1)



As an aid for servicing, the Speed Switch Assembly #65 should be mounted onto the PCBA first and then carefully installed together into the Left Housing Halve #44.

