

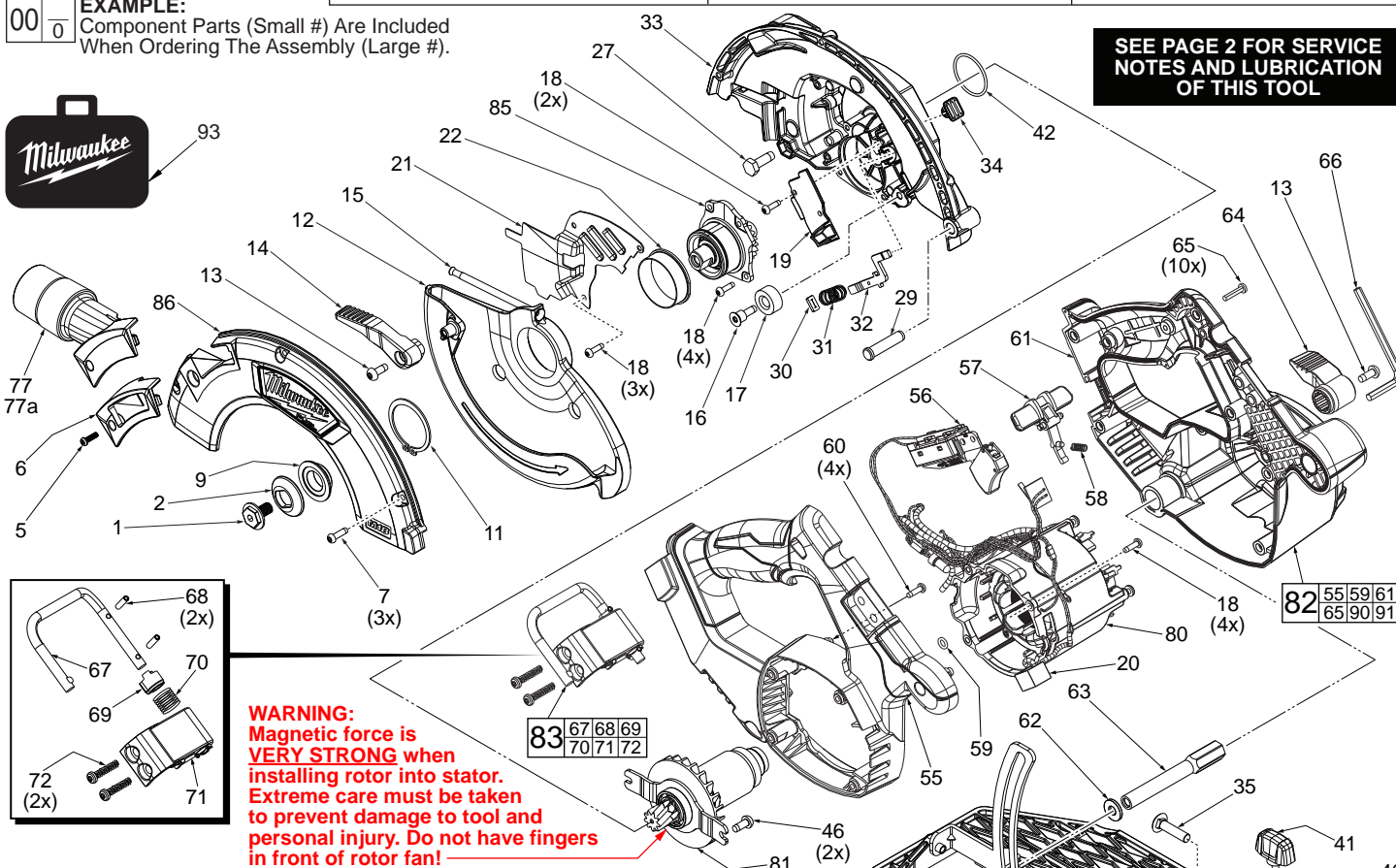


SERVICE PARTS LIST

BULLETIN NO.
54-40-2790

SPECIFY CATALOG NO. AND SERIAL NO. WHEN ORDERING PARTS		REVISED BULLETIN	DATE
M18 FUEL™ HP 7-1/4" Circular Saw			
CATALOG NO.	2732-20	STARTING SERIAL NO.	J72A
		WIRING INSTRUCTION See Page Three	

EXAMPLE:
Component Parts (Small #) Are Included
When Ordering The Assembly (Large #).

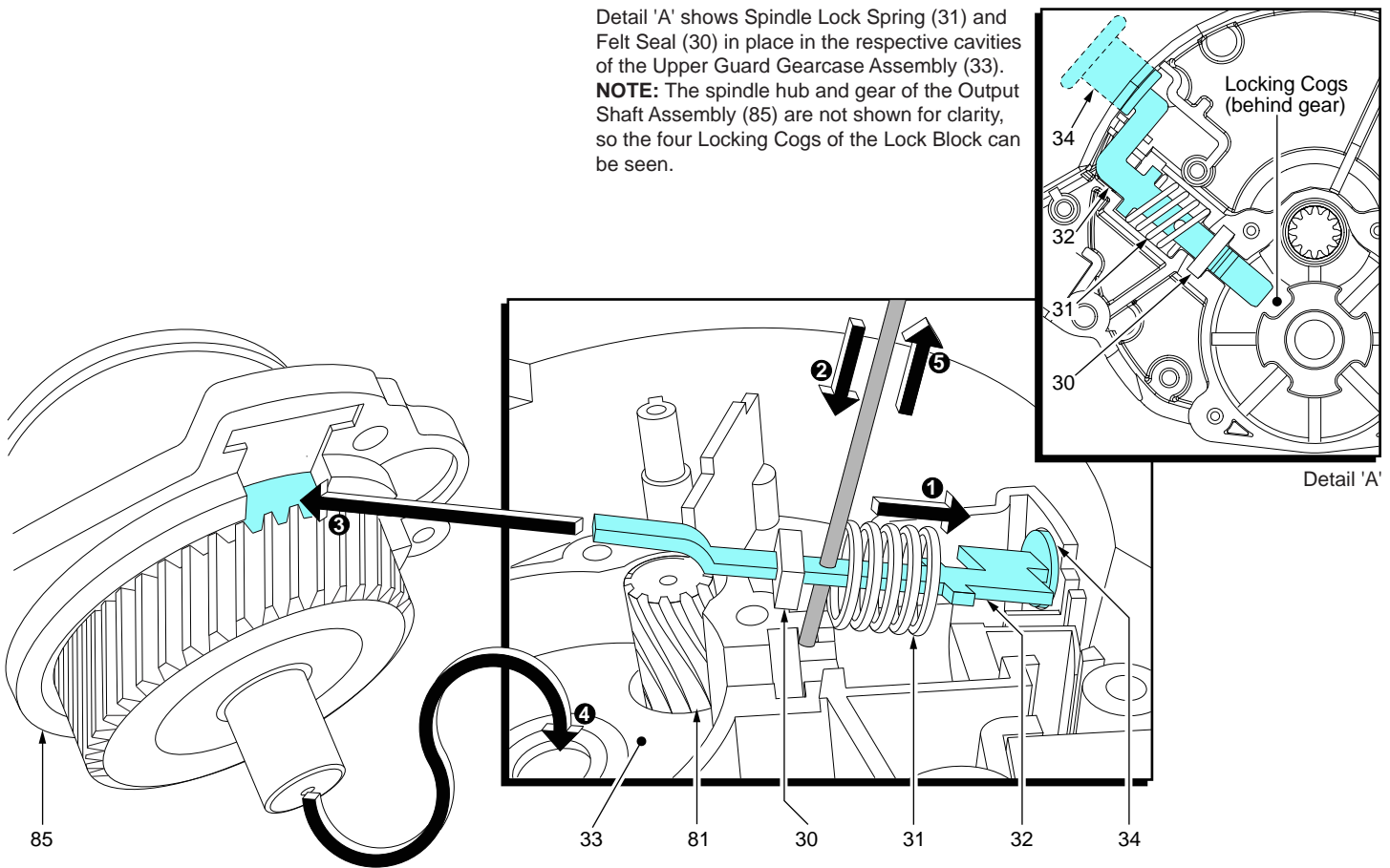


SEE PAGE 2 FOR SERVICE NOTES AND LUBRICATION OF THIS TOOL

FIG.	PART NO.	DESCRIPTION OF PART	NO. REQ.
1	06-75-1012	Blade Screw	1
2	43-34-0795	Outer Blade Flange	1
5	05-78-1005	M3.5 x 12mm Pan Hd. Phillips Machine Screw	1
6	49-90-4001	Dust Chute (Accessory)	1
7	05-78-5316	M4 x 14mm Pan Hd. Taptite T-20 Screw	3
9	43-34-0790	Inner Blade Flange	1
11	34-60-0860	Retaining Ring	1
12	28-41-1001	Lower Guard	1
13	06-82-5314	10-24 x 1/2" Pan Hd. Tapt. T-25 Screw	2
14	44-10-1008	Lower Guard Lever	1
15	40-50-0045	Lower Guard Spring	1
16	45-04-0485	10-32 x 13/16" Bumper Screw	1
17	42-38-0222	Rubber Bumper	1
18	06-82-5285	6-32 x 1/2" Pan Hd. ST T-15 Screw	13
19	31-15-6002	LED Cover	1
20	22-44-4140	LED Assembly	1
21	44-46-9001	Retaining Plate	1
22	45-14-0015	Spindle Hub Sleeve	1
27	06-75-5860	1/4-20 x 3/4" Hex Head Bolt	1
29	44-60-0741	Pivot Pin	1
30	45-06-0720	Felt Seal	1
31	40-50-8046	Spindle Lock Spring	1
32	44-20-1001	Spindle Lock	1
33	28-14-7004	Upper Guard Gear Case with Needle Bearing	1
34	42-42-1030	Spindle Lock Button	1
35	06-10-0110	M6 x 28mm Carriage Bolt	1
36	45-88-1560	Washer	1
37	43-98-0705	Bevel Adjustment Knob	1
38	-----	Shoe Assembly	1
40	40-50-0650	Rip Fence Spring	1
41	43-98-0605	Rip Fence Knob	1
42	34-40-8001	O-Ring	1
46	05-74-1030	M5 x 8mm Pan Hd. Taptite T-25 Screw	2
51	22-56-0150	Closed End Connector (See Wiring Diagram)	1
52	23-94-2731	High Voltage Wire Assy. (See Wiring Diagram)	1
55	31-44-7002	Handle/Housing Halve - Right	1
56	23-66-5027	On-Off Switch	1
57	42-42-0345	Lock-Off Button	1
58	40-50-1760	Lock-Off Button Spring	1
59	34-40-4480	O-Ring	1
60	05-78-1010	M3.5 x 12mm Pan Hd. T-10 Machine Screw	4
61	31-44-6002	Handle/Housing Halve - Left	1
62	45-88-1515	Washer	1
63	45-08-0395	Depth Shaft	1

FIG.	PART NO.	DESCRIPTION OF PART	NO. REQ.
64	44-10-0018	Depth Lever	1
65	06-82-7470	6 x 11/16" Pan Hd. Plastite T-15 Screw	10
66	49-96-0600	Hex Key	1
67	43-74-0065	Rafter Hook Bar	1
68	44-60-0585	Coil Pin	2
69	45-22-1005	Detent Sleeve	1
70	40-50-0985	Spring	1
71	43-74-8001	Rafter Hook Housing	1
72	06-82-0052	M6 x 32mm Pan Hd. PT T-25 Screw	2
75	05-81-1195	M3 x 8mm Pan Hd. ST T-10 Screw	2
77	49-90-3001	Dust Adapter (Standard Equipment)	1
77a	49-90-3002	Dust Adapter (Optional)	1
80	14-20-7007	Electronics Assembly	1
81	16-01-7009	Rotor Assembly	1
82	14-38-7008	Handle/Housing Kit	1
83	14-34-7006	Rafter Hook Assembly	1
84	14-74-7005	Shoe Assembly	1
85	38-50-7003	Output Shaft Assembly	1
86	28-20-7002	Upper Guard Cover Assembly	1
87	12-20-8397	Service Nameplate (Not Shown)	1
88	10-20-2032	Warning Label (Not Shown)	1
89	49-22-2731	Rip Fence (Not Shown)	1
90	31-51-0137	Bevel Scale	1
91	31-51-0132	Front Scale	1
92	06-83-1600	Set Screw	1
93	42-55-2743	Medium FUEL Contractor Bag	1
94	06-81-0015	M2.5 x 3.175 Phillips Screw	4

Detail 'A' shows Spindle Lock Spring (31) and Felt Seal (30) in place in the respective cavities of the Upper Guard Gearcase Assembly (33).
NOTE: The spindle hub and gear of the Output Shaft Assembly (85) are not shown for clarity, so the four Locking Cogs of the Lock Block can be seen.



ASSEMBLING OUTPUT SHAFT ASSEMBLY (85) INTO UPPER GUARD GEARCASE ASSEMBLY (33)

To prevent damage to the Felt Seal (30) it is recommended to temporarily remove the felt seal until steps 1 and 2 are completed.

1. With the use of both hands, compress the Spindle Lock Spring (31) back on the Spindle Lock Plate (32) past the small hole on the plate.
2. While holding the spring back with one hand, quickly insert a thin metal instrument into the small hole on the plate. The metal instrument should capture the entire spring (all coils should be behind that tool).

With the spindle lock spring trapped behind the small hole on the spindle lock plate, slide the felt seal back onto the spindle lock plate. Position the felt seal above the corresponding cavity in the Upper Guard Gearcase (33).

3. Insert the open end of the spindle lock plate (32) into the opening of the Output Shaft Assembly (85) behind the gear, as shown.

4. Insert the bearing shaft portion of the output shaft assembly into the needle bearing of the upper guard gearcase assembly. Carefully wiggle the entire output shaft assembly until the gearing of the output shaft assembly engages with the pinion gearing of the Rotor (81) and the output shaft assembly slides into place.

Secure the output shaft assembly to the upper guard gearcase assembly with the use of four screws (18), not shown. It is recommended to alternate the tightening of the screws.

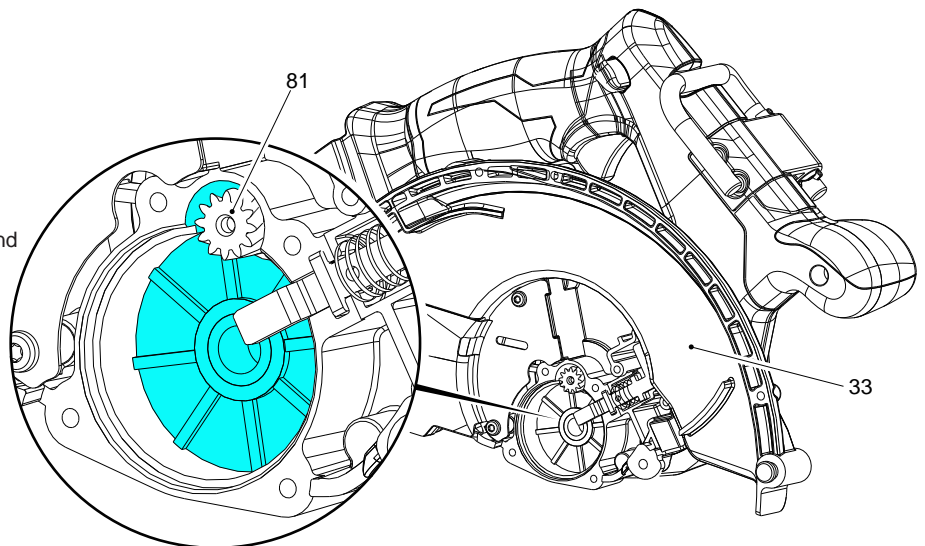
5. Remove the thin metal instrument. Check for the proper functioning of the spindle locking mechanism. Rotate the spindle shaft and depress the Spindle Lock Button (34) at the same time. The spindle lock plate should drop into one of four cogs that lock the spindle. Spindle lock mechanism must return briskly when released from engagement in the lock block cog.

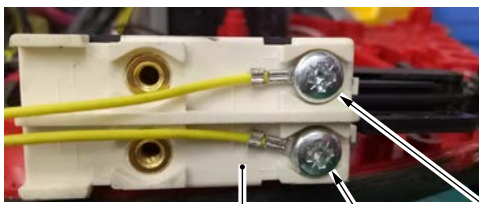
LUBRICATION

Type 'J' Grease, No. 49-08-4220

Apply 3.0 grams (.10 oz) of 'J' Grease to the gear bore in Upper Guard Gearcase (33). The grease should be directed toward the pinion end of the rotor (81).

When servicing, remove 90-95% of the existing grease prior to installing Type 'J'. Original grease may be similar in color but not compatible with 'J'.



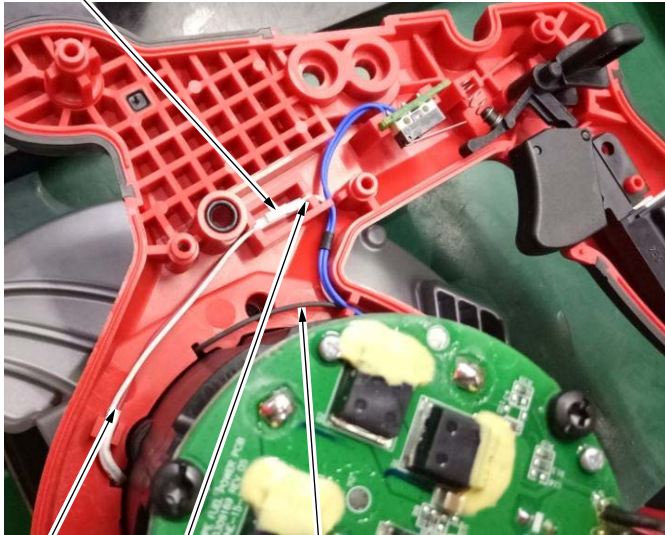


CONNECTOR SWITCH SW, Yellow SW, Yellow

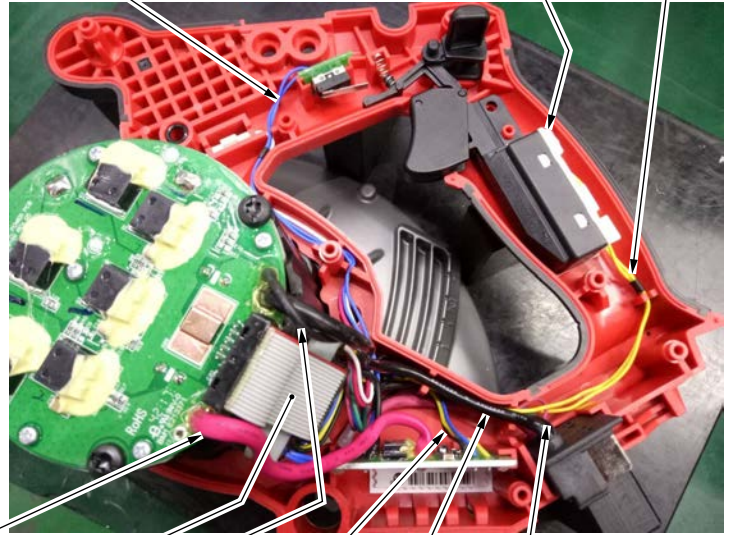
BNT-IN,BNT-OUT

SWITCH

SW,SW_S



W9/W10 W7/W8 HV_GND 2



B+SW RIBBON CABLE B-PW GND,R-,SSen BAT+,B+ BAT-,HV_GND 1,DP,DC

WIRE	WIRE COLOR	WIRE DESTINATION
SW	YELLOW	SWITCH TO CONTROL BOARD
SW_S	YELLOW	SWITCH TO CONTROL BOARD
RIBBON	WHITE	CONTROL BOARD TO POWER BOARD
BAT+	RED	TERMINAL TO SSD BOARD
B+	RED	TERMINAL TO CONTROL BOARD
DP	BLUE	TERMINAL TO CONTROL BOARD
DC	GREEN	TERMINAL TO CONTROL BOARD
BAT-	BLACK	TERMINAL TO POWER BOARD
HV_GND 1	BLACK	TERMINAL TO CLOSE END CONNECTOR
B+SW	RED	SSD BOARD TO POWER BOARD
B-PW	BLACK	SSD BOARD TO POWER BOARD
HV_GND 2	BLACK	TERMINAL TO CLOSE END CONNECTOR
GND_	BLACK	CONTROL BOARD TO SSD BOARD
R-	YELLOW	CONTROL BOARD TO SSD BOARD
SSen	BLUE	CONTROL BOARD TO SSD BOARD
BTN-IN	BLUE	CONTROL BOARD TO MICRO SWITCH
BTN-OUT	BLUE	CONTROL BOARD TO MICRO SWITCH
W7/W8	RED,WHITE	CONTROL BOARD TO CONNECTOR
W9/W10	RED,WHITE	WORKLIGHT TO CONNECTOR

