



SERVICE PARTS LIST

BULLETIN NO.
54-06-2440

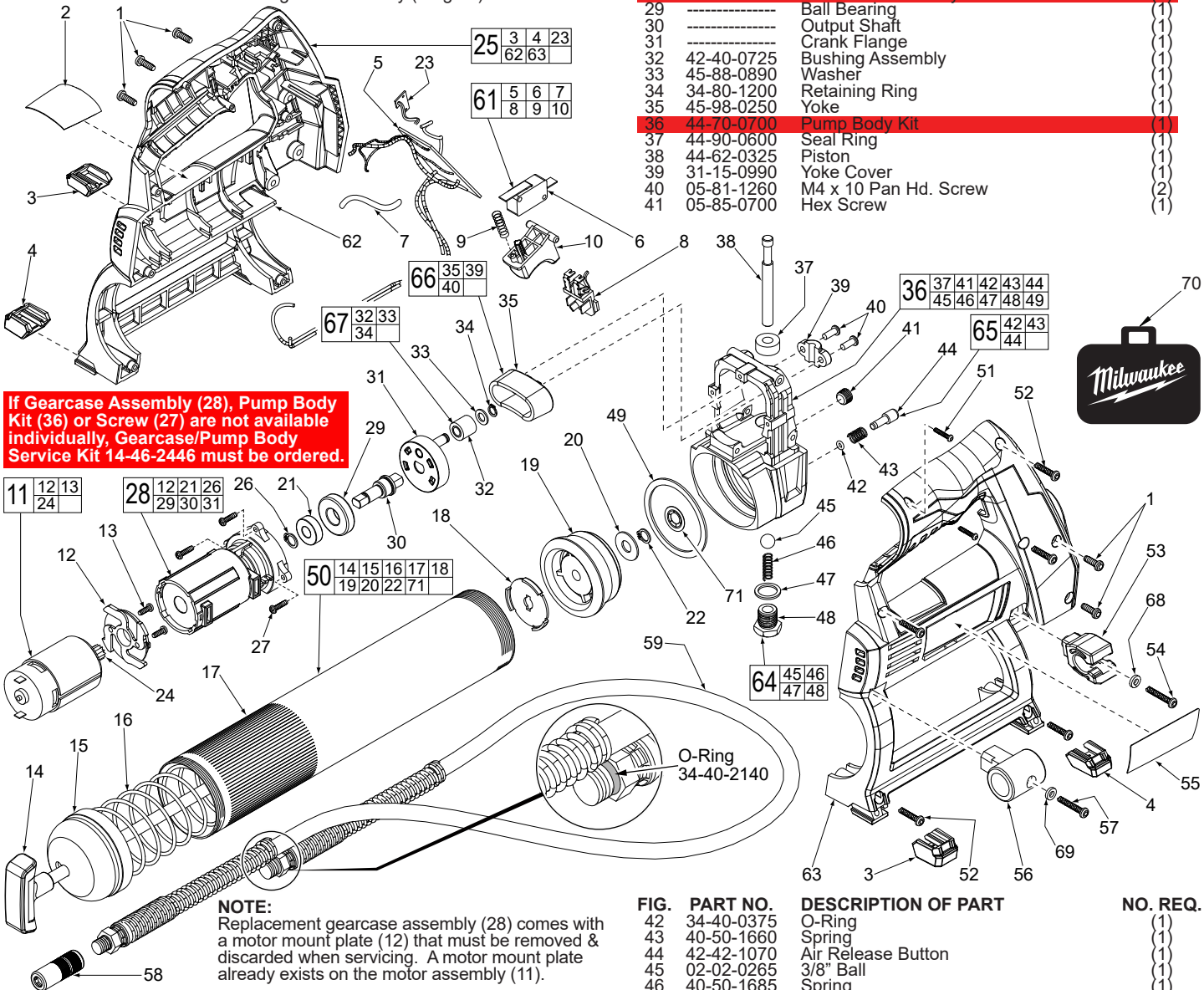
| | | |
|--|---------------------------------|------------------|
| SPECIFY CATALOG NO. AND SERIAL NO. WHEN ORDERING PARTS | | REVISED BULLETIN |
| 12 Volt Grease Gun | | |
| CATALOG NO. 2446-20 | STARTING SERIAL NO. C39A | |

EXAMPLE:

| | |
|----|---|
| 00 | 0 |
|----|---|

 Component Parts (Small #) Are Included
 When Ordering The Assembly (Large #).

| FIG. | PART NO. | DESCRIPTION OF PART | NO. REQ. |
|------|------------|-----------------------|----------|
| 28 | 14-29-0600 | Gearcase Assembly | (1) |
| 29 | ----- | Ball Bearing | (1) |
| 30 | ----- | Output Shaft | (1) |
| 31 | ----- | Crank Flange | (1) |
| 32 | 42-40-0725 | Bushing Assembly | (1) |
| 33 | 45-88-0890 | Washer | (1) |
| 34 | 34-80-1200 | Retaining Ring | (1) |
| 35 | 45-98-0250 | Yoke | (1) |
| 36 | 44-70-0700 | Pump Body Kit | (1) |
| 37 | 44-90-0600 | Seal Ring | (1) |
| 38 | 44-62-0325 | Piston | (1) |
| 39 | 31-15-0990 | Yoke Cover | (1) |
| 40 | 05-81-1260 | M4 x 10 Pan Hd. Screw | (2) |
| 41 | 05-85-0700 | Hex Screw | (1) |

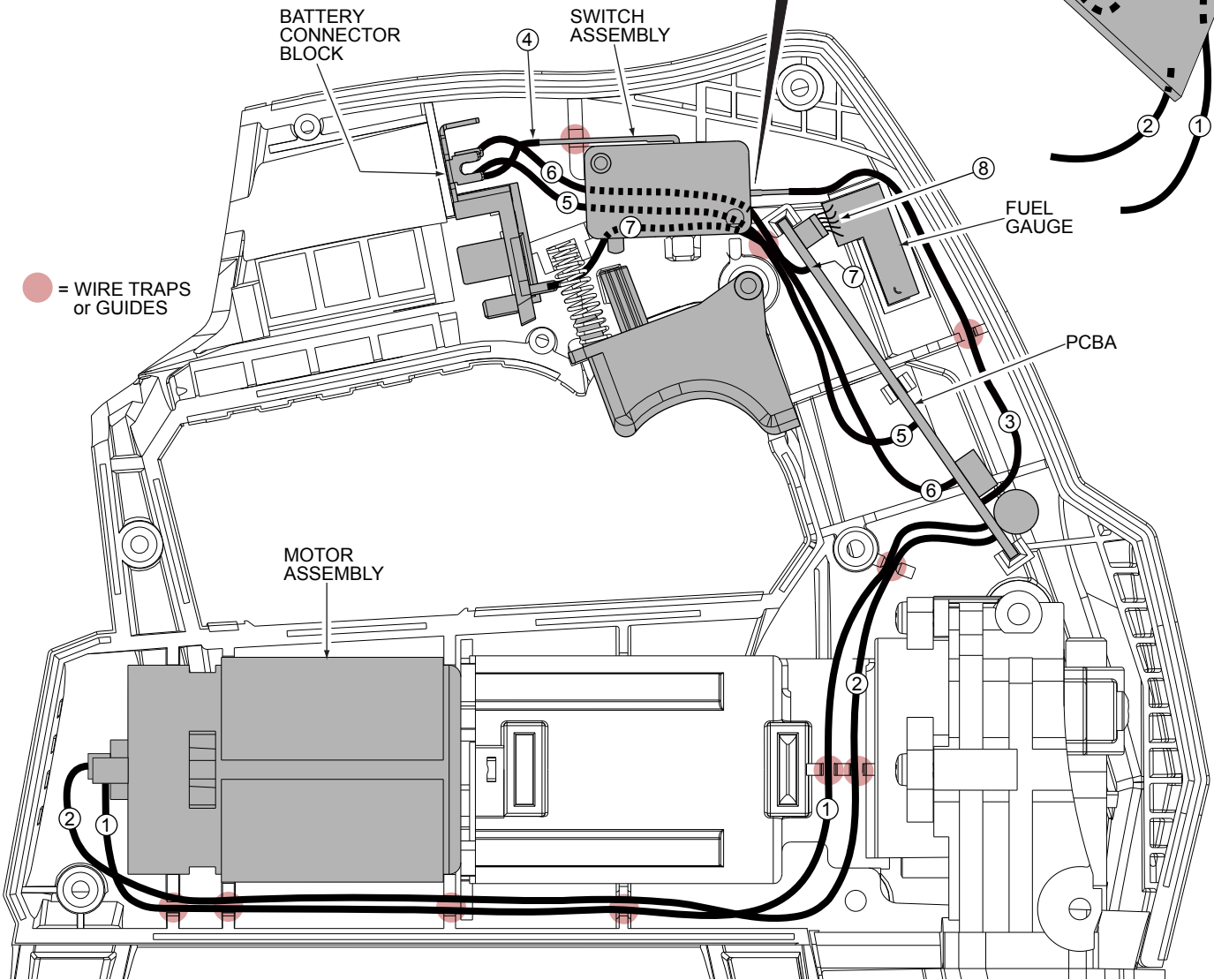
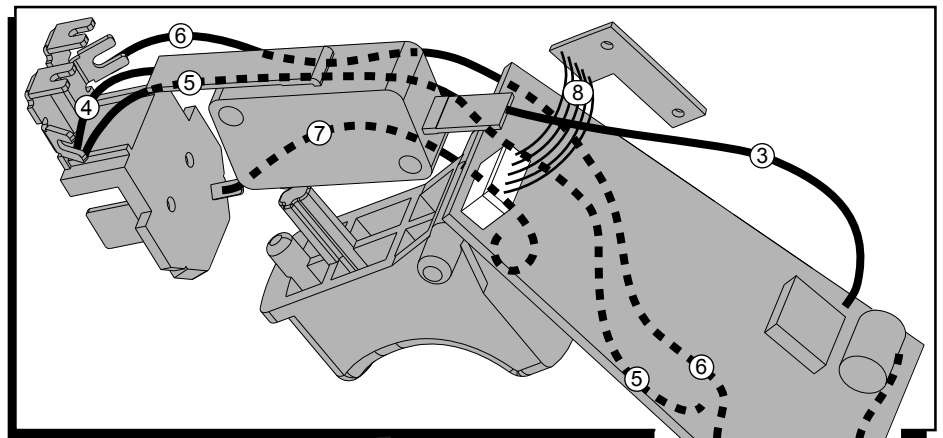


If Gearcase Assembly (28), Pump Body Kit (36) or Screw (27) are not available individually, Gearcase/Pump Body Service Kit 14-46-2446 must be ordered.

NOTE:
 Replacement gearcase assembly (28) comes with a motor mount plate (12) that must be removed & discarded when servicing. A motor mount plate already exists on the motor assembly (11).

| FIG. | PART NO. | DESCRIPTION OF PART | NO. REQ. |
|------|------------|--|----------|
| 1 | 05-74-0985 | M4 x 12 Pan Hd. Tapitite T-20 Screw | (5) |
| 2 | 10-15-1390 | Warning Label | (1) |
| 3 | 44-52-1060 | Pad - Left Front and Right Rear (Set of 2) | (1) |
| 4 | 44-52-1070 | Pad - Left Rear and Right Front (Set of 2) | (1) |
| 5 | ----- | PCBA with wiring | (1) |
| 6 | 23-66-2885 | Switch | (1) |
| 7 | ----- | 18 Gauge Red Wire | (1) |
| 8 | ----- | Battery Connector Block | (1) |
| 9 | 40-50-4520 | Spring | (1) |
| 10 | 45-72-0300 | Trigger | (1) |
| 11 | 23-30-0600 | Motor Assembly | (1) |
| 12 | ----- | Motor Mount Plate | (1) |
| 13 | 05-81-0205 | M3 x 6 Pan Hd. Screw | (2) |
| 14 | 44-94-0650 | Plunger Rod with Rod | (1) |
| 15 | ----- | Barrel Tube Cover | (1) |
| 16 | ----- | Barrel Spring | (1) |
| 17 | ----- | Barrel | (1) |
| 18 | 44-66-1525 | Stamping Plate | (1) |
| 19 | 45-06-0890 | Rubber Seal | (1) |
| 20 | 45-88-2030 | Washer | (1) |
| 21 | ----- | Spacer | (1) |
| 22 | 44-86-1380 | Retaining Ring | (1) |
| 23 | ----- | Fuel Gauge | (1) |
| 24 | ----- | Motor Pinion | (1) |
| 25 | 31-50-2700 | Housing Assembly Kit | (1) |
| 26 | 44-86-1380 | Retaining Ring | (1) |
| 27 | 05-81-1220 | M3 x 12 Pan Hd. Screw | (3) |

| FIG. | PART NO. | DESCRIPTION OF PART | NO. REQ. |
|------|------------|--|----------|
| 42 | 34-40-0375 | O-Ring | (1) |
| 43 | 40-50-1660 | Spring | (1) |
| 44 | 42-42-1070 | Air Release Button | (1) |
| 45 | 02-02-0265 | 3/8" Ball | (1) |
| 46 | 40-50-1685 | Spring | (1) |
| 47 | 45-88-0905 | Copper Washer | (1) |
| 48 | 45-04-1010 | Plug Screw | (1) |
| 49 | 43-44-1100 | Rubber Gasket | (1) |
| 50 | 30-06-0200 | Barrel Assembly | (1) |
| 51 | 06-82-2385 | M2.6 x 14 Pan Hd. T-8 Screw | (2) |
| 52 | 06-82-7470 | 6 x 11/16" Pan Hd. Plastite T-15 Screw | (5) |
| 53 | 43-75-0500 | Grease Hose Holster | (1) |
| 54 | 05-81-1275 | M4 x 20 Pan Hd. Tapitite T-20 Screw | (1) |
| 55 | 12-20-2446 | Service Nameplate Kit | (1) |
| 56 | 42-90-0575 | Coupler Holster | (1) |
| 57 | 06-82-7475 | 6 x 7/8" Pan Hd. Plastite T-15 Screw | (1) |
| 58 | 42-90-0700 | Coupler Assembly | (1) |
| 59 | 14-37-0300 | Grease Hose Assembly | (1) |
| 61 | 23-66-2890 | Switch Assembly | (1) |
| 62 | ----- | Left Housing Halve | (1) |
| 63 | ----- | Right Housing Halve | (1) |
| 64 | 45-04-1030 | Plug Screw Kit | (1) |
| 65 | 42-42-1080 | Air Release Kit | (1) |
| 66 | 45-98-0300 | Yoke Kit | (1) |
| 67 | 42-40-1150 | Bushing Kit | (1) |
| 68 | ----- | Spring Washer | (1) |
| 69 | ----- | Washer | (1) |
| 70 | 42-55-2446 | Soft Carrying Case | (1) |
| 71 | 44-86-1400 | Self-Locking Retaining Ring | (1) |



● = WIRE TRAPS or GUIDES

WIRING SPECIFICATIONS

| Wire No. | Wire Color | Origin or Gauge | Length | Terminals, Connectors and 1 or 2 End Wire Preparation |
|----------|------------|-----------------|--------|---|
| 1 | Red | ---- | ---- | Wire connects from PCBA to (+) right side of motor. |
| 2 | White | ---- | ---- | Wire connects from PCBA to (-) left side of motor. |
| 3 | Blue | ---- | ---- | Wire connects from PCBA to front of switch. |
| 4 | Red | ---- | ---- | Wire connects from connector block (with #5) to back of switch. |
| 5 | Red | ---- | ---- | Wire connects from PCBA to connector block (with #4). |
| 6 | Black | ---- | ---- | Wire connects from PCBA to connector block. |
| 7 | White | ---- | ---- | Wire connects from PCBA to connector block. |
| 8 | ---- | ---- | ---- | Fuel gauge harness plugs into PCBA. |

AS AN AID TO REASSEMBLY, TAKE NOTICE OF WIRE ROUTING AND POSITION IN WIRE GUIDES AND TRAPS WHILE DISMANTLING TOOL.

BE CAREFUL AND AVOID PINCHING WIRES BETWEEN HANDLE HALVES WHEN ASSEMBLING.