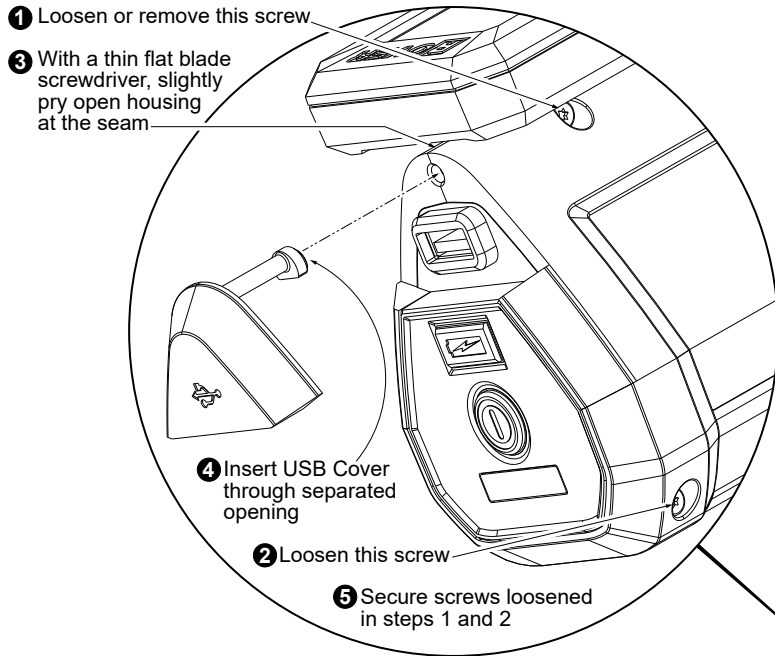




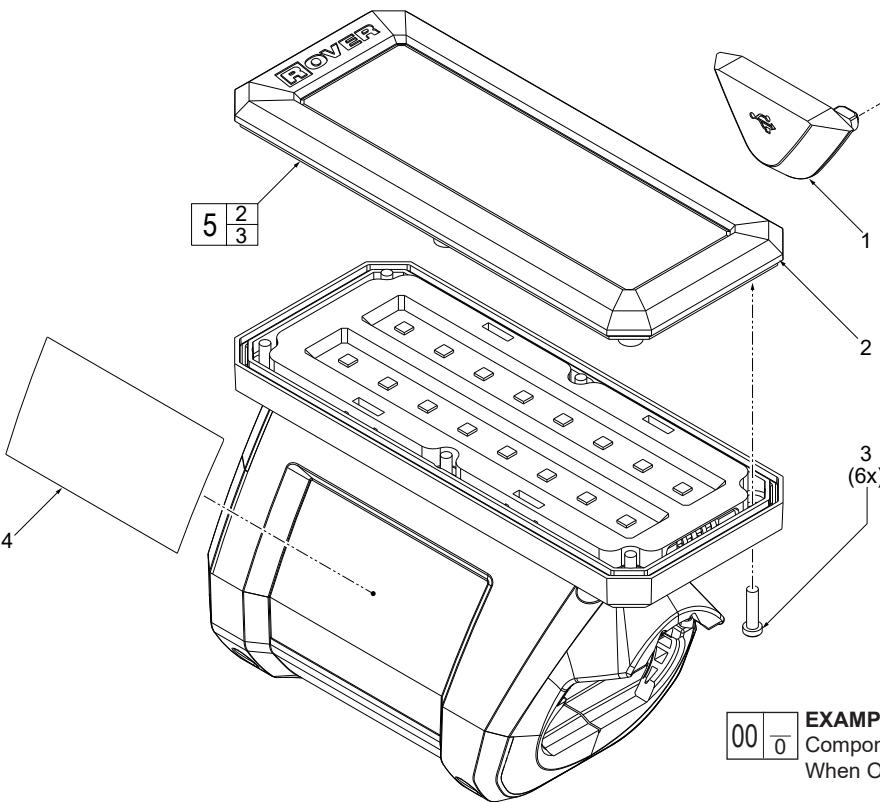
SERVICE PARTS LIST

BULLETIN NO.
54-06-2235

SPECIFY CATALOG NO. AND SERIAL NO. WHEN ORDERING PARTS		REVISED BULLETIN	DATE
M12™ PIVOTING LED FLOOD LIGHT			Aug. 2020
CATALOG NO.	2367-20	STARTING SERIAL NO.	L75A
WIRING INSTRUCTION			



- As an aid to installing a service replacement USB Cover (1) follow these instructions:
1. Temporarily loosen or remove the housing screw closest to the USB Cover.
 2. Temporarily loosen the housing screw on the other end of housing as shown.
 3. Use a thin, flat blade screwdriver and place in the seam of the housing halves. Create a gap between the housings by slightly prying the housing halves open.
 4. Place stem of the USB Cover through the hole and gap of housing as shown.
 5. With the USB Cover stem properly in place, reinstall and secure screws by hand tightening.



NOTE:
It is recommended to have all servicing of MILWAUKEE products done at an authorized repair facility.

EXAMPLE:
00 0 Component Parts (Small #) Are Included When Ordering The Assembly (Large #).

FIG. NOTES

- 3 Hand tighten fasteners. Use of power tools could strip screws or damage bracket.
- 4 A clean, dry surface is essential for proper performance for any adhesive system. The area intended for application of any adhesive label or nameplate must be prepared by cleaning with isopropyl alcohol. The solvent is to be applied with a clean, lint free applicator and the surface allowed to dry before applying the label or nameplate.

FIG.	PART NO.	DESCRIPTION OF PART	NO. REQ.
1	31-15-2117	USB Cover	(1)
2	-----	Lens/Bracket	(1)
3	-----	M2.5 x 10mm Pan hd. T-10 Screw	(6)
4	12-20-2072	Service Nameplate	(1)
5	44-06-2367	Lens/Bracket Kit	(1)