



# SERVICE PARTS LIST

**BULLETIN NO.**  
**54-06-1105**

SPECIFY CATALOG NO. AND SERIAL NO. WHEN ORDERING PARTS				REVISED BULLETIN	DATE
<b>PENLIGHT</b>					Sep. 2017
<b>CATALOG NO.</b>	<b>2105</b>	<b>STARTING SERIAL NO.</b>	<b>J13A</b>	WIRING INSTRUCTION	

**EXAMPLE:**  
Component Parts (Small #)  
Are Included When Ordering  
The Assembly (Large #).

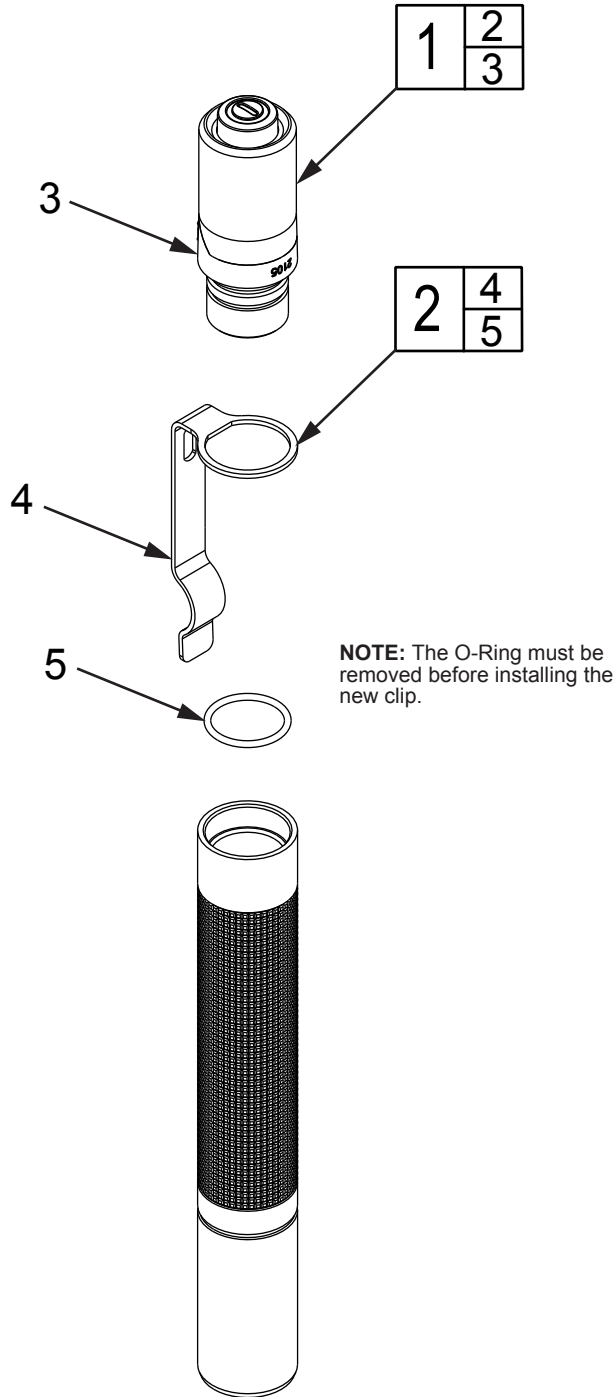


FIG.	PART NO.	DESCRIPTION OF PART	NO. REQ.	FIG.	PART NO.	DESCRIPTION OF PART	NO. REQ.
1	42-52-0275	End Cap Assembly	(1)	3	-----	End Cap	(1)
2	42-70-0175	Clip w/ O-Ring	(1)	4	-----	Clip	(1)
				5	-----	O-Ring	(1)