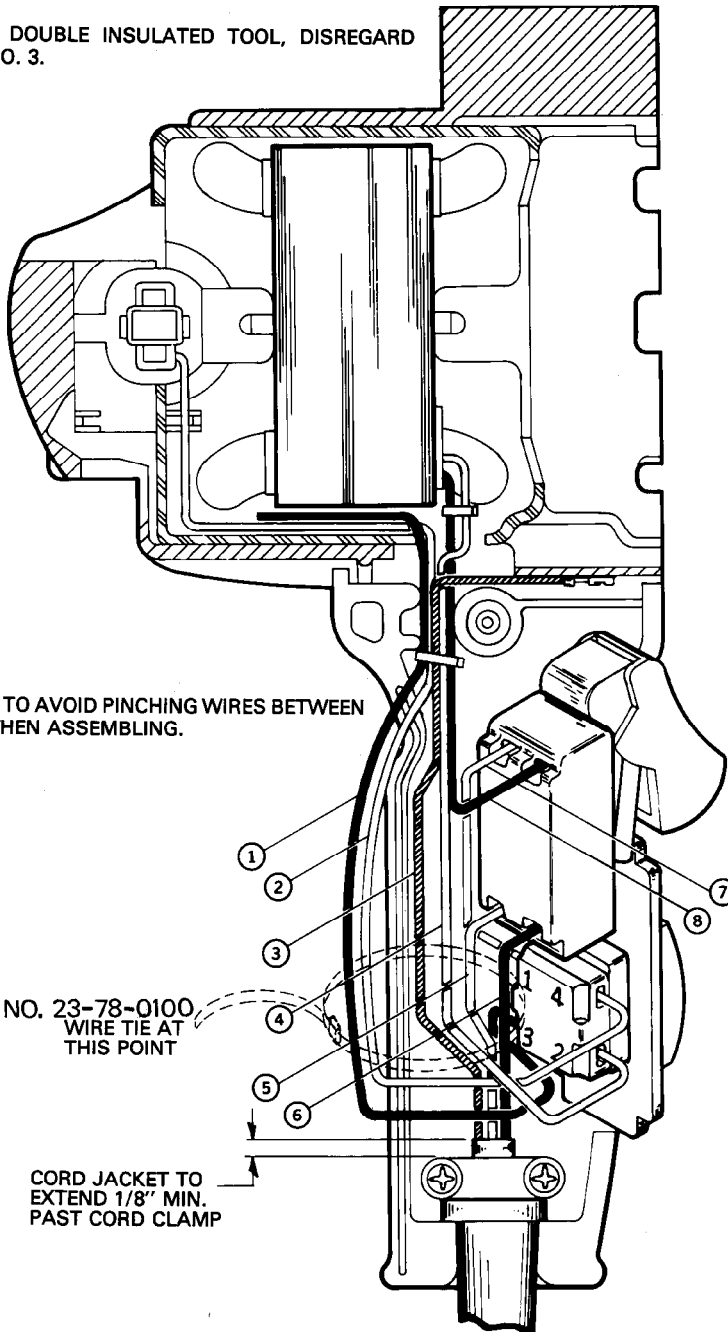


WIRING INSTRUCTIONS

TITLE **COMPACT DRILL**

BULLETIN
58-01-0539

FOR A DOUBLE INSULATED TOOL, DISREGARD WIRE NO. 3.



BE CAREFUL TO AVOID PINCHING WIRES BETWEEN HANDLES WHEN ASSEMBLING.

NO. 23-78-0100
WIRE TIE AT
THIS POINT

CORD JACKET TO
EXTEND 1/8" MIN.
PAST CORD CLAMP

NOTE:
THIS WIRING PRODUCES A COUNTERCLOCKWISE ROTATION OF THE ARMATURE, VIEWED FROM COMMUTATOR END, WITH A FIELD OF +N, AND AN ARMATURE OF -N. SWITCH IS IN FORWARD POSITION.

NOTE:
AFTER INSERTION IN SWITCH APPLY SLIGHT (2-5 LB. FORCE) TO BE CERTAIN WIRES ARE SECURED

ALL STRIP LEADS $\pm 1/16''$ UNLESS OTHERWISE SPECIFIED

WIRES ROUTED THROUGH NOTCHES IN HANDLES

AS AN AID IN REASSEMBLY, TAKE NOTICE OF WIRE ROUTING AND POSITION IN WIRE GUIDES AND TRAPS WHILE DISMANTLING TOOL.

NOTE:
All leads must be held to $\pm 1/8''$.
All field leads to be measured from and perpendicular to laminations.
All lead lengths are before stripping.

WIRING SPECIFICATIONS

Wire No.	Wire Color	Origin or Gauge	Length	Terminals, Connectors and 1 or 2 End Wire Preparation
1	WHITE	23-94-5700	10" $\pm 1/8''$	1/8" STRIP FOR T2, 3/16" MIN. STRIP AND TIN
2	RED	23-94-4405	10" $\pm 1/8''$	1/8" STRIP FOR T2, 3/16" MIN. STRIP AND TIN
3	GREEN	CORD	6 1/4" $\pm 1/8''$	3/16" STRIP FOR T1
4	BLACK	FIELD	6 1/2" $\pm 1/8''$	3/16" STRIP AND TIN
5	WHITE	CORD	3 1/4" $\pm 1/8''$	3/8" STRIP AND TIN
6	BLACK	CORD	3 1/4" $\pm 1/8''$	3/8" STRIP AND TIN
7	BLACK	JUMPER	4" $\pm 1/8''$	STRIP 3/8" AND TIN, STRIP 3/16" MIN. AND TIN
8	YELLOW	FIELD	3" $\pm 1/8''$	3/8" STRIP AND TIN

TERMINAL DESCRIPTION

Code	Part No.	Qty.
T1	23-74-0851	1
T2	23-74-0755	2

CONNECTOR DESCRIPTION

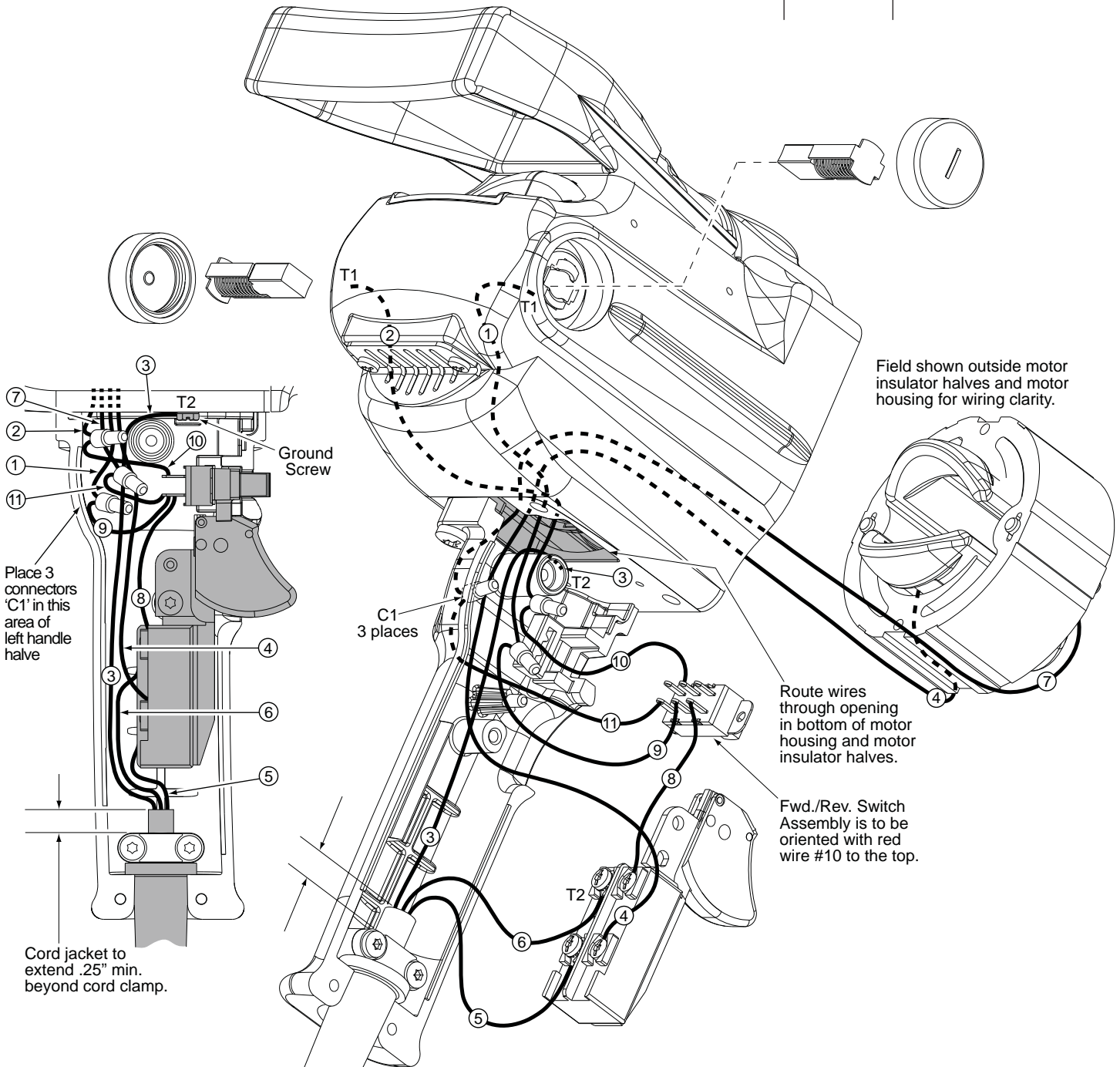
Code	Part No.	Qty.
S1	23-66-1420	1

WIRING INSTRUCTIONS

TITLE

1/2" COMPACT DRILL

**BULLETIN
58-01-0541**



WIRING SPECIFICATIONS

Wire No.	Wire Color	Origin or Part No.	Gauge	Length	Terminals, Connectors and End Wire Preparation
1	White	23-94-6216	----	----	Strip .18" for T1, connect to right brush. Strip .5" and tin, connect to #9 with C1.
2	Red	23-94-6221	----	----	Strip .18" for T1, connect to left brush. Strip .5" and tin, connect to #10 with C1.
3	Green	22-64-1231	----	----	Component of cord set. Strip .18" for T2. Ground to motor hsg. with screw.
4	Black	18-50-0063	----	----	Component of field. Strip .18" for T2. Connect to '2A' on switch.
5	White	22-64-1231	----	----	Component of cord set. Strip .18" for T2. Connect to '2B' on switch.
6	Black	22-64-1231	----	----	Component of cord set. Strip .18" for T2. Connect to '1B' on switch.
7	Yellow	18-50-0063	----	----	Component of field. Strip .5" and tin, connect to #11 with C1.
8	Black	23-66-2517	----	----	Component of fwd./rev. switch. Strip .18" for T1. Connect to '1A' on switch.
9	White	23-66-2517	----	----	Component of fwd./rev. switch. Strip .5" and tin, connect to #1 with C1.
10	Red	23-66-2517	----	----	Component of fwd./rev. switch. Strip .5" and tin, connect to #2 with C1.
11	Yellow	23-66-2517	----	----	Component of fwd./rev. switch. Strip .5" and tin, connect to #7 with C1.

NOTE:

All leads must be held to $\pm 1/8"$.
All lead lengths are before stripping.

TERMINAL DESCRIPTION

Code	Part No.	Qty.
T1	23-74-0750	2
T2	23-74-0850	5

CONNECTOR DESCRIPTION

C1	22-56-0150	3
----	------------	---

Rely on premium drills and drivers by Milwaukee if you're looking for quality and efficiency.