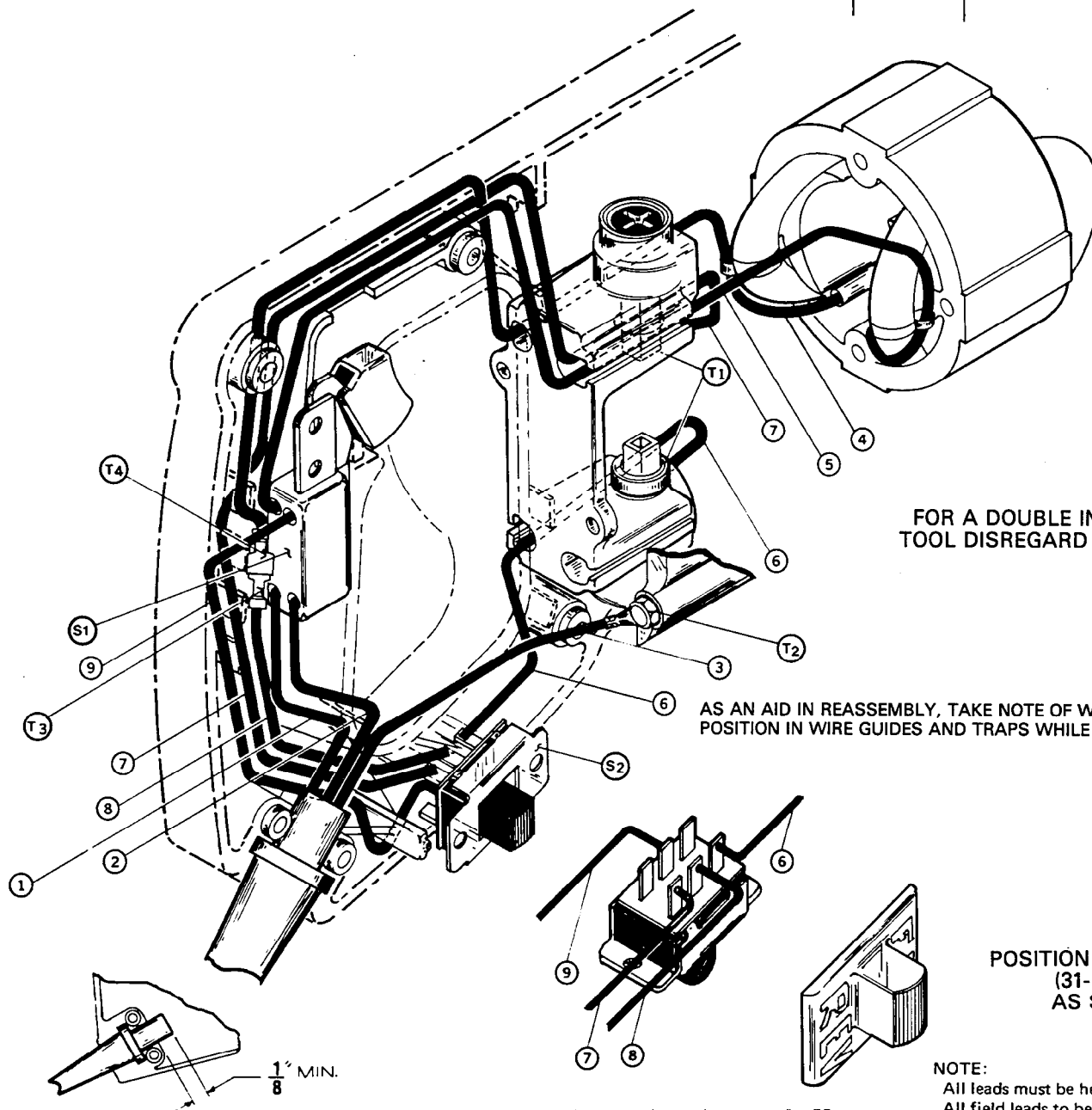


WIRING INSTRUCTIONS

TITLE TRIPLE REDUCTION REVERSING "D" HANDLE TOOLS

**BULLETIN
58-01-0213**



FOR A DOUBLE INSULATED TOOL DISREGARD WIRE NO. 3

AS AN AID IN REASSEMBLY, TAKE NOTE OF WIRE ROUTING AND POSITION IN WIRE GUIDES AND TRAPS WHILE DISMANTLING TOOL.

POSITION SWITCH CAP
(31-12-0195)
AS SHOWN

NOTE:
All leads must be held to $\pm 1/8''$.
All field leads to be measured from and perpendicular to laminations.
All lead lengths are before stripping.

WIRING SPECIFICATIONS				
Wire No.	Wire Color	Origin or Gauge	Length	Terminals, Connectors and 1 or 2 End Wire Preparation
1	BLACK	CORD	2-11/16"	STRIP 3/8" AND TIN.
2	WHITE	CORD	2-11/16"	STRIP 3/8" AND TIN.
3	GREEN	CORD	4-1/2"	STRIP 3/16" FOR T2.
4	RED	FIELD	8-1/2"	STRIP 3/16" FOR T4.
5	BROWN	FIELD	8-1/2"	STRIP 3/8" AND TIN.
6	WHITE	—	—	COMPONENT OF SWITCH ASSEMBLY S2.
7	YELLOW	—	—	COMPONENT OF SWITCH ASSEMBLY S2.
8	WHITE	—	—	COMPONENT OF SWITCH ASSEMBLY S2.
9	YELLOW	—	—	COMPONENT OF SWITCH ASSEMBLY S2.

TERMINAL DESCRIPTION		
Code	Part No.	Qty.
T1	22-44-0090	2
T2	23-74-0896	1
T3	23-74-0430	1
T4	23-74-0440	1

CONNECTOR DESCRIPTION		
Code	Part No.	Qty.
S1	23-66-0167	1
S2	23-66-1453	1

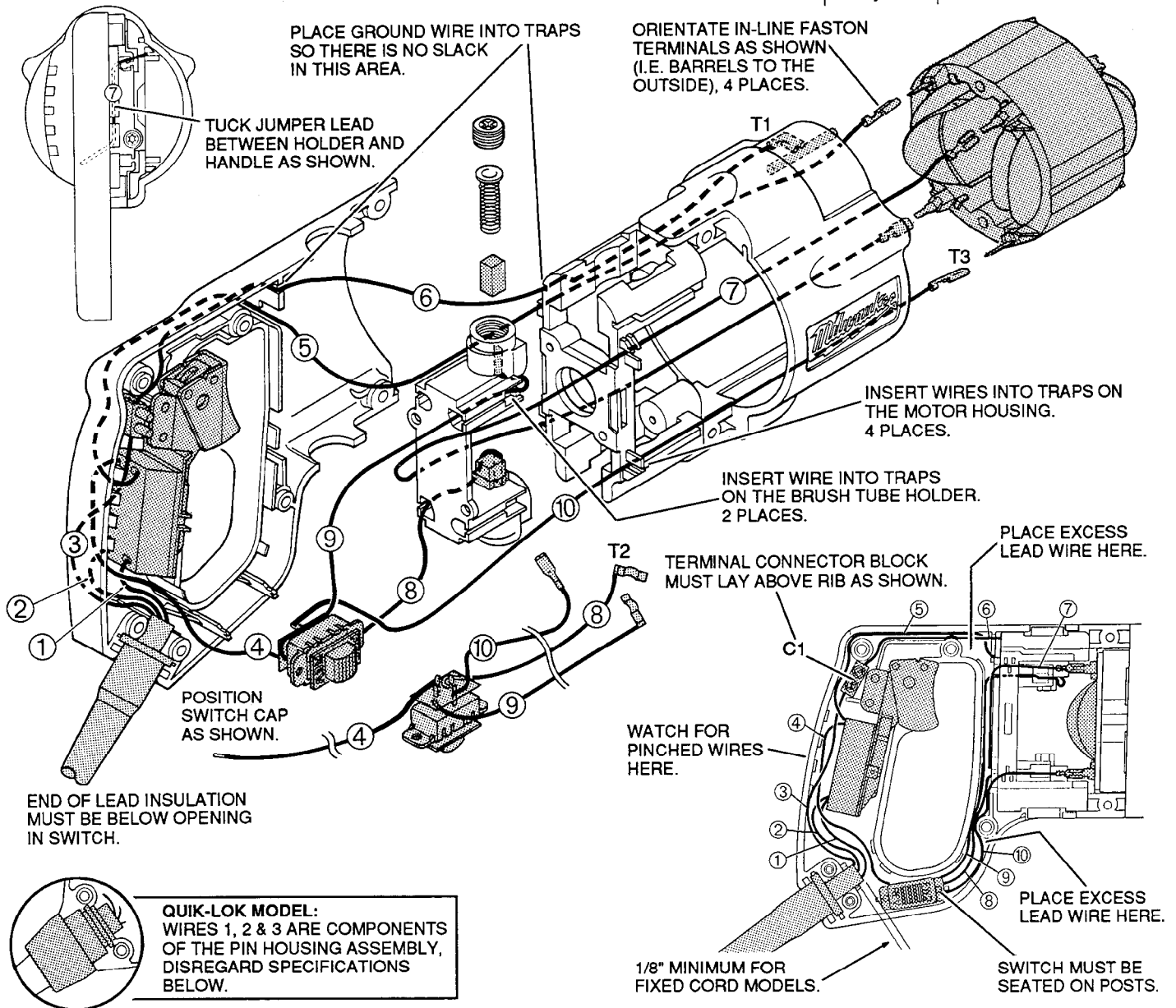
WIRING INSTRUCTIONS

TITLE

D-HANDLE TOOLS

**BULLETIN
58-01-0214**

DATE
July '92



WIRING SPECIFICATIONS

Wire No.	Wire Color	Origin or Part No.	Gauge	Length	Terminals, Connectors and End Wire Preparation
1	White	Cord	18	2-11/16"	Strip 3/8" and tin.
2	Black	Cord	18	2-11/16"	Strip 3/8" and tin.
▲ 3	Green	Cord	18	4-1/2"	Strip 3/16" and tin for C1.
4	Black	Switch Assy.	18	5-1/4"	Strip 3/8" and tin.
5	White	23-94-6175	18	8"	Strip 3/16" for T3 / Strip 3/8" tin.
▲ 6	Green	23-94-6100	16	8-3/4"	Strip 3/16" for T1 / Strip 3/16 and tin for C1.
7	Yellow	23-94-6110	18	5-5/16"	Strip both ends 3/16" for T3.
8	Black	Switch Assy.	18	5-1/4"	Strip 1/4" for T2.
9	Black	Switch Assy.	18	7-1/4"	Strip 1/4" for T2.
10	Brown	Switch Assy.	18	5-1/4"	Strip 3/16" for T3.

NOTE:
All leads must be held to $\pm 1/8"$
All lead lengths are before stripping.

TERMINAL DESCRIPTION		
Code	Part No.	Qty.
▲ T1	23-74-0605	1
T2	23-74-0410	2
T3	23-74-1060	4
CONNECTOR DESCRIPTION		
▲ C1	22-56-0456	1

BULK LEAD WIRE - BULLETIN 58-01-0003

▲ FOR DOUBLE INSULATED, DISREGARD WIRES AND TERMINALS

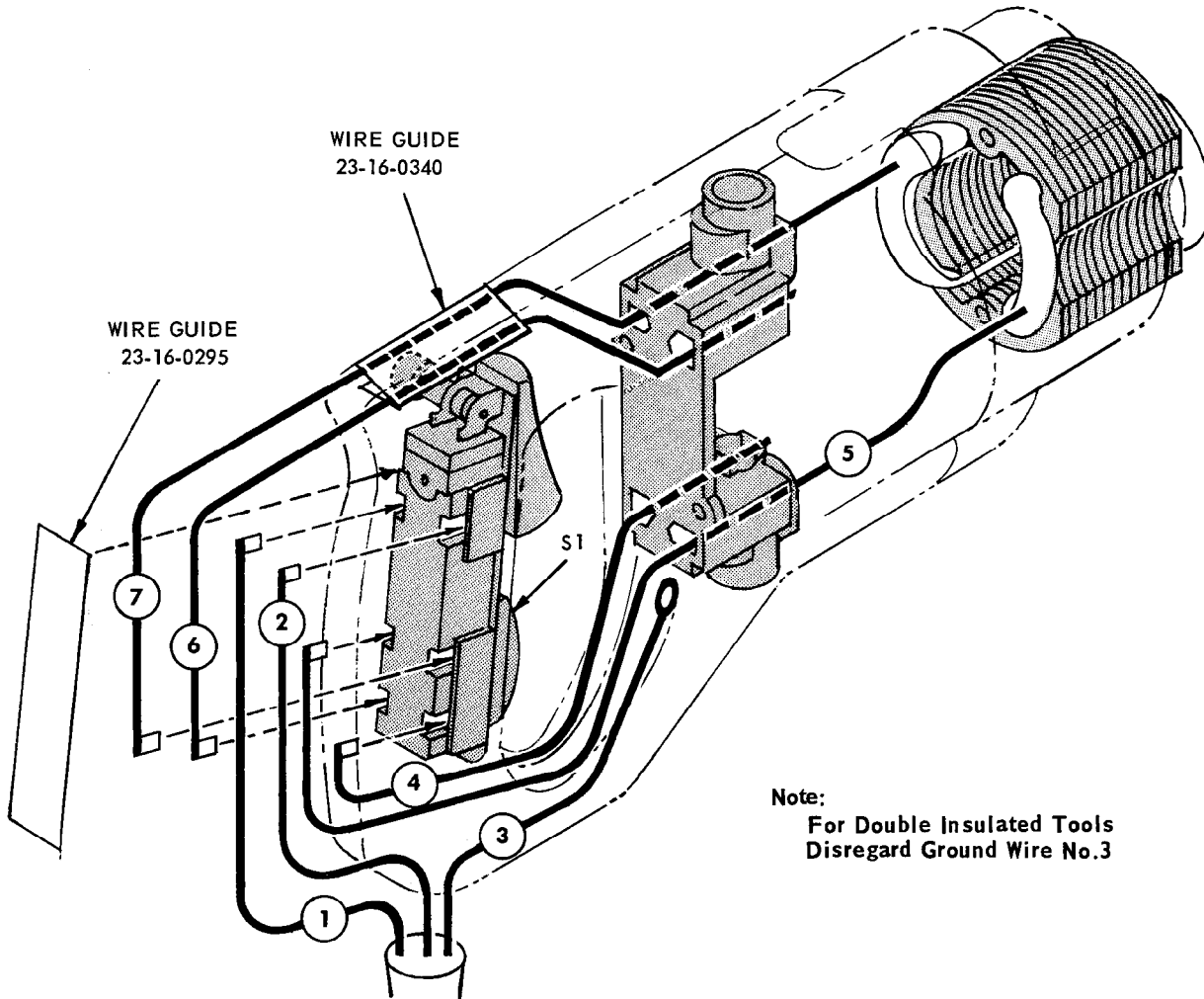
WIRING INSTRUCTIONS

TITLE

REVERSING "D" HANDLE DRILLS

**BULLETIN
58-01-0215**

Date
Jan. '73



Note:
For Double Insulated Tools
Disregard Ground Wire No.3

NOTE:
ALL LEADS MUST BE HELD TO $\pm 1/8"$
ALL FIELD LEADS TO BE MEASURED FROM
AND PERPENDICULAR TO LAMINATIONS.
ALL LEAD LENGTHS ARE BEFORE STRIPPING.

WHERE TERMINAL AND CONNECTOR COMBINATIONS ARE SPECIFIED, SEE ELECTRICAL PARTS CHART
FOR PART NO. AND QUANTITY AND DRAWING FOR ACTUAL HOOK-UP

WIRING SPECIFICATIONS

Wire Color	Wire No.	Ga.	Lgth. in.	Terminal				Connector				Wire Color	Wire No.	Ga.	Lgth. in.	Terminal				Connector																				
				T1	T2	T3	T4	C1	C2	C3	C4					T1	T2	T3	T4	C1	C2	C3	C4																	
Black	1	Cord	3-7/8	X																																				
White	2	Cord	3-7/8	X																																				
Green	3	Cord	4-1/2		X																																			
Black	4	Brush	7-1/2	X (2 T1)																																				
Red	5	Field	9	X																																				
White	6	Brush	9-1/4	X (2 T1)																																				
Brown	7	Field	9	X																																				

Electrical Parts

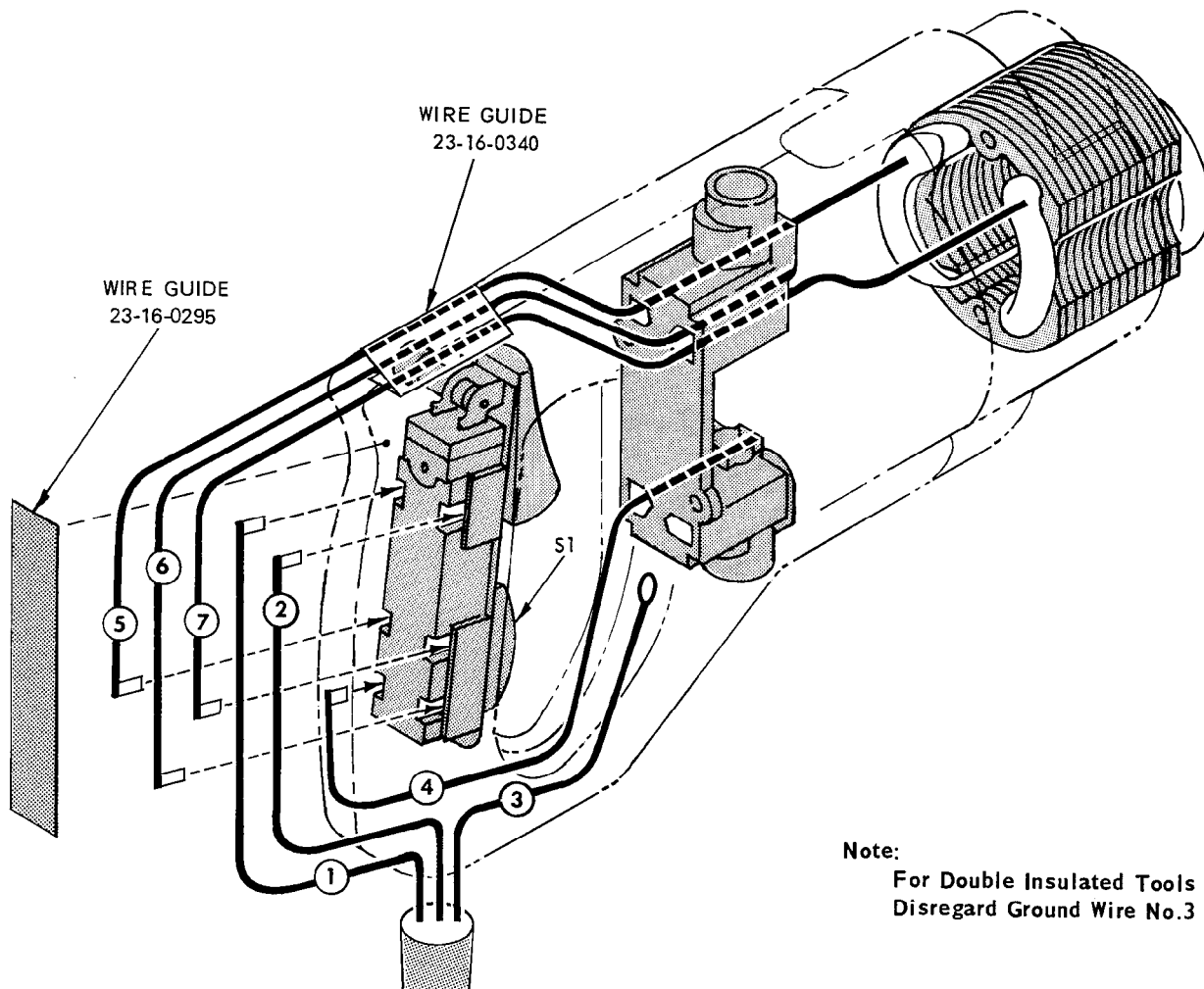
TERMINAL DESCRIPTION		
Code	Part No.	Qty.
T1	22-44-0090	8
T2	23-74-0390	1
CONNECTOR DESCRIPTION		
Code	Part No.	Qty.
SWITCH DESCRIPTION		
Code	Part No.	Qty.
S1	23-66-0751	1

WIRING INSTRUCTIONS

TITLE REVERSING "D" HANDLE TOOLS

BULLETIN
58-01-0217

Date
May '73



Note:
For Double Insulated Tools
Disregard Ground Wire No.3

NOTE:
ALL LEADS MUST BE HELD TO ± 1/8"
ALL FIELD LEADS TO BE MEASURED FROM
AND PERPENDICULAR TO LAMINATIONS.
ALL LEAD LENGTHS ARE BEFORE STRIPPING.

WHERE TERMINAL AND CONNECTOR COMBINATIONS ARE SPECIFIED, SEE ELECTRICAL PARTS CHART FOR PART NO. AND QUANTITY AND DRAWING FOR ACTUAL HOOK-UP

WIRING SPECIFICATIONS

Wire Color	Wire No.	Ga.	Lgth. in.	Terminal				Connector				Wire Color	Wire No.	Qty.	Lgth.	Terminal				Connector														
				T1	T2	T3	T4	C1	C2	C3	C4					T1	T2	T3	T4	C1	C2	C3	C4											
Black	1	Cord	3-7/8	X																														
White	2	Cord	3-7/8																															
Green	3	Cord	4-1/2				X																											
Black	4	18	7-5/8	XX																														
Red	5	Field	9	X																														
White	6	18	9-1/8	XX																														
Brown	7	Field	8-7/8	X																														

Electrical Parts		
TERMINAL DESCRIPTION		
Code	Part No.	Qty.
T1	22-44-0090	8
T2	23-74-0390	1
CONNECTOR DESCRIPTION		
Code	Part No.	Qty.
SWITCH DESCRIPTION		
Code	Part No.	Qty.
S1	23-66-0751	1

WIRING INSTRUCTIONS

TITLE

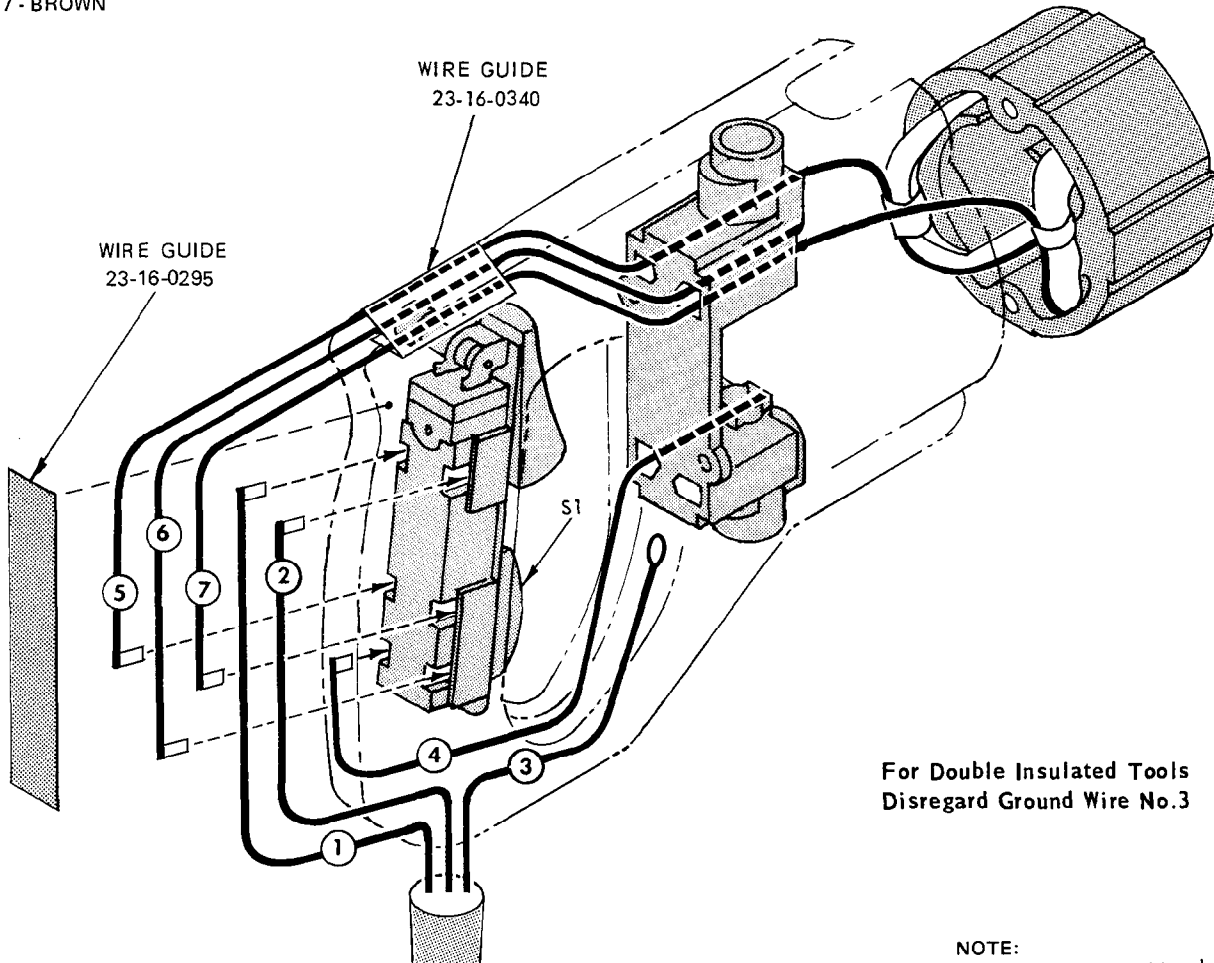
REVERSING "D" HANDLE TOOLS

**BULLETIN
58-01-0219**

DATE
Aug. '75

* ON SOME TOOLS WIRE NOS. 5 THRU 7 ARE AS FOLLOWS:

- 5 - RED
- 6 - WHITE
- 7 - BROWN



For Double Insulated Tools
Disregard Ground Wire No.3

Refer to electrical parts chart for terminal and connector part nos.
and quantity required – see drawing for actual hook-up.

NOTE:
All leads must be held to $\pm 1/8''$.
All field leads to be measured from
and perpendicular to laminations.
All lead lengths are before stripping.

WIRING SPECIFICATIONS											
Wire No.	Wire Color	Origin or Gauge	Length	Terminal				Connector			
				T1	T2	T3	T4	C1	C2	C3	C4
1	BLACK	CORD	3-7/8	X							
2	WHITE	CORD	3-7/8	X							
3	GREEN	CORD	4-1/2		X						
4	BLACK	18	7-5/8	XX							
5	WHITE*	FIELD	9-3/8	X							
6	YELLOW*	18	9-1/8	XX							
7	WHITE*	FIELD	9-3/8	X							

ELECTRICAL PARTS		
TERMINAL DESCRIPTION		
Code	Part No.	Qty.
T1	22-44-0090	8
T2	23-74-0390	1
CONNECTOR DESCRIPTION		
Code	Part No.	Qty.
SWITCH DESCRIPTION		
Code	Part No.	Qty.
S1	23-66-0751	1

WIRING INSTRUCTIONS

TITLE

D-HANDLE TOOLS

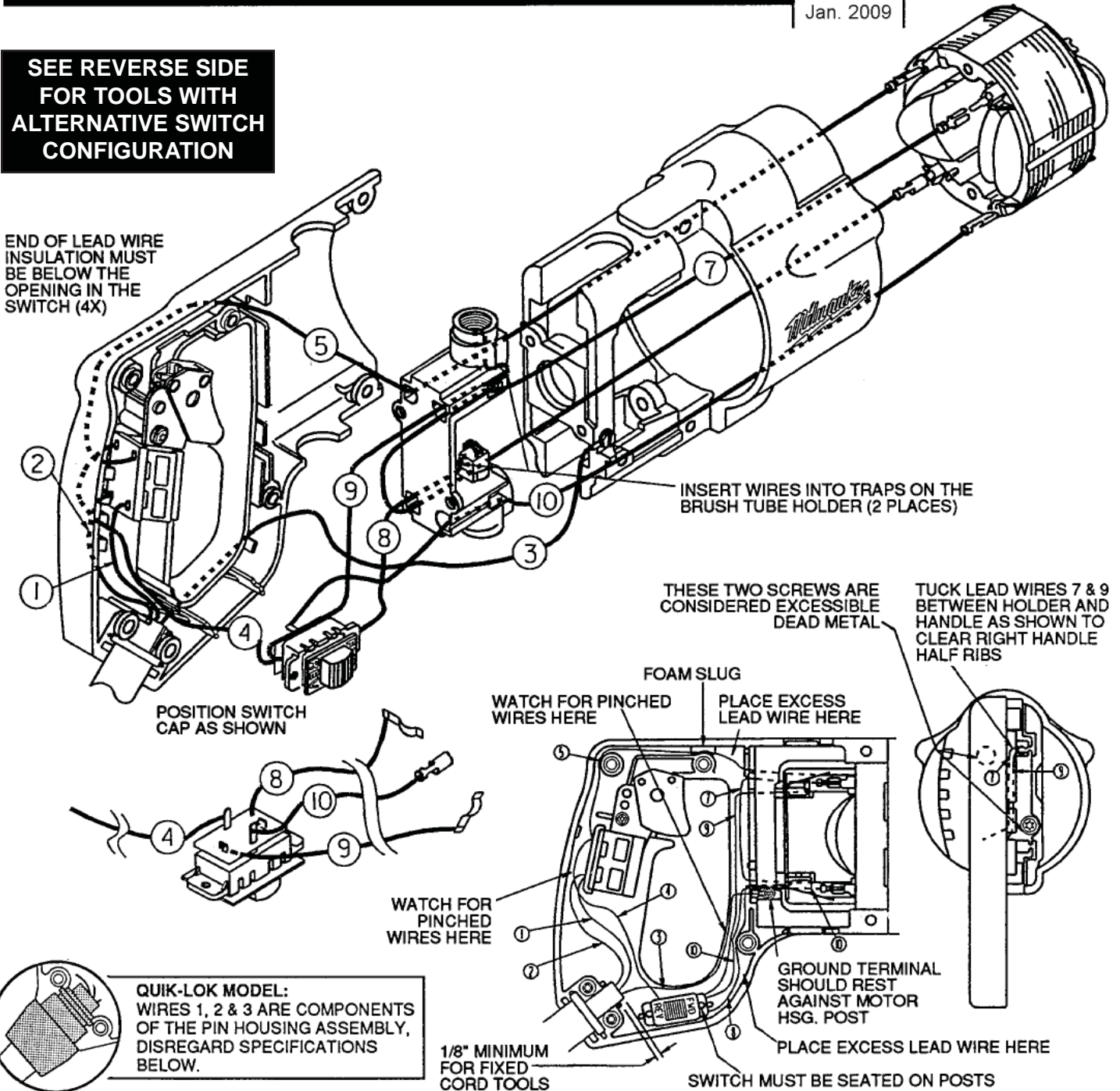
DATE

Jan. 2009

BULLETIN
58-01-0224

**SEE REVERSE SIDE
FOR TOOLS WITH
ALTERNATIVE SWITCH
CONFIGURATION**

END OF LEAD WIRE
INSULATION MUST
BE BELOW THE
OPENING IN THE
SWITCH (4X)



QUIK-LOK MODEL:
WIRES 1, 2 & 3 ARE COMPONENTS
OF THE PIN HOUSING ASSEMBLY,
DISREGARD SPECIFICATIONS
BELOW.

WIRING SPECIFICATIONS

Wire No.	Wire Color	Origin or Part No.	Gauge	Length	Terminals, Connectors and End Wire Preparation
1	White	Cord	18	3-3/4"	Strip 3/8" and tin.
2	Black	Cord	18	3-3/4"	Strip 3/8" and tin.
3	Green	Cord	18	5-1/2"	Strip 3/16" for T1.
4	Black	Rev. Switch	18	5-1/4"	Strip 3/8" and tin.
5	White	23-94-6115	18	8"	Strip 3/16" for T3 / Strip 3/8" and tin.
7	Yellow	23-94-6110	18	5-5/16"	Strip both ends 3/16" for T3.
8	Black	Rev. Switch	18	5-1/4"	Strip 1/4" for T2.
9	Black	Rev. Switch	18	7-1/4"	Strip 1/4" for T2.
10	Brown	Rev. Switch	18	5-1/4"	Strip 3/16" for T3.

BULK LEAD WIRE - BULLETIN 58-01-0003

NOTE:

All leads must be held to $\pm 1/8"$.
All lead lengths are before stripping.

TERMINAL DESCRIPTION

Code	Part No.	Qty.
T1	23-74-0896	1
T2	23-74-0410	2
T3	23-74-1060	4

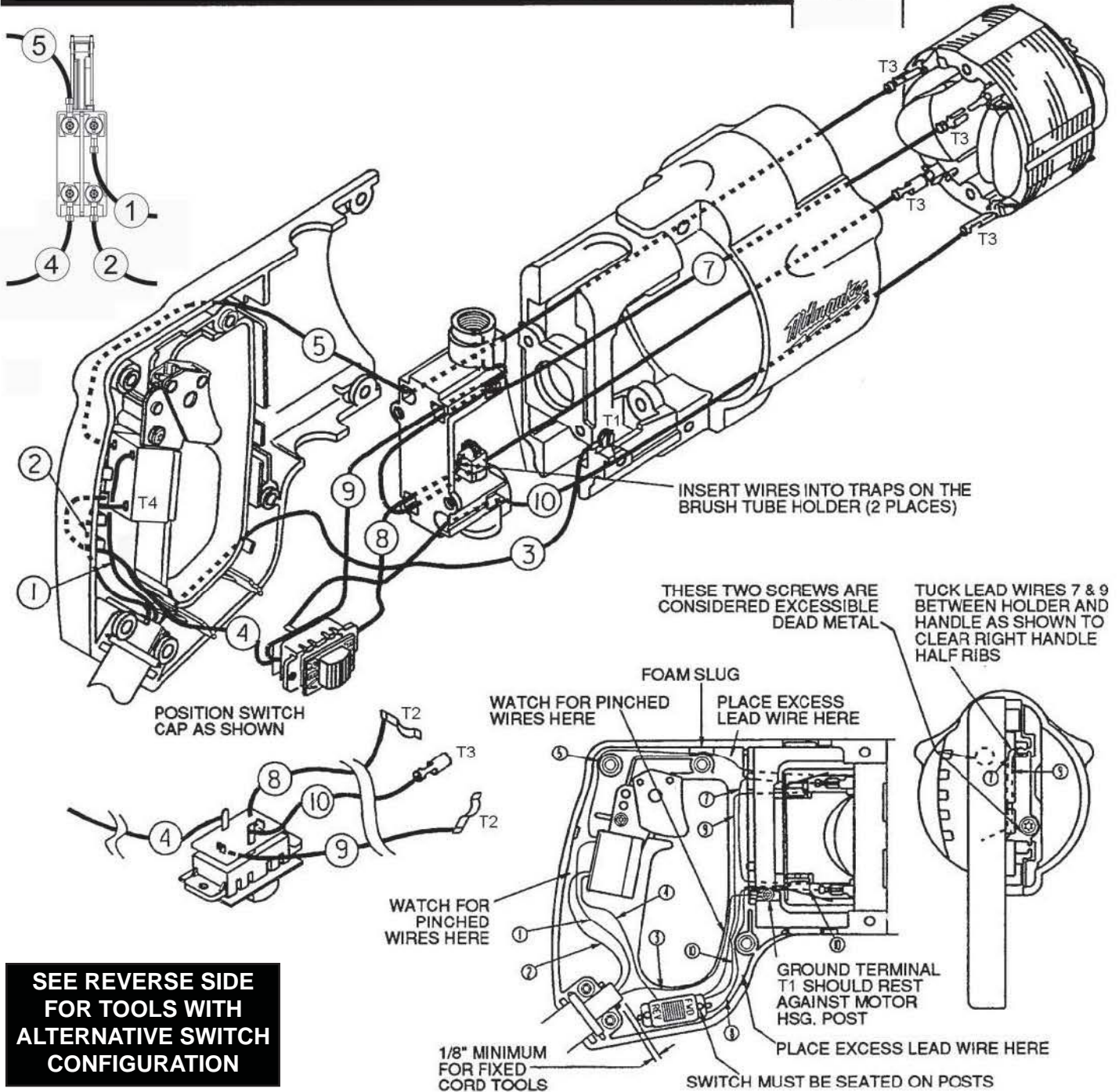
WIRING INSTRUCTIONS

TITLE

D-HANDLE TOOLS

BULLETIN

DATE



SEE REVERSE SIDE FOR TOOLS WITH ALTERNATIVE SWITCH CONFIGURATION

WIRING SPECIFICATIONS

Wire No.	Wire Color	Origin or Part No.	Gauge	Length	Terminals, Connectors and End Wire Preparation
1	White	Cord	18	3-3/4"	Strip 3/16" for T4.
2	Black	Cord	18	3-3/4"	Strip 3/16" for T4.
3	Green	Cord	18	5-1/2"	Strip 3/16" for T1.
4	Black	Rev. Switch	18	5-1/4"	Strip 3/16" for T4.
5	White	23-94-4296	18	9-1/4"	Strip 3/16" for T3 / Strip 3/16" for T4.
7	Yellow	23-94-6110	18	5-5/16"	Strip both ends 3/16" for T3.
8	Black	Rev. Switch	18	5-1/4"	Strip 1/4" for T2.
9	Black	Rev. Switch	18	7-1/4"	Strip 1/4" for T2.
10	Brown	Rev. Switch	18	5-1/4"	Strip 3/16" for T3.

BULK LEAD WIRE - BULLETIN 58-01-0003

NOTE:

All leads must be held to ± 1/8".
All lead lengths are before stripping.

TERMINAL DESCRIPTION

Code	Part No.	Qty.
T1	23-74-0896	1
T2	23-74-0410	2
T3	23-74-1060	4
T4	23-74-0850	4

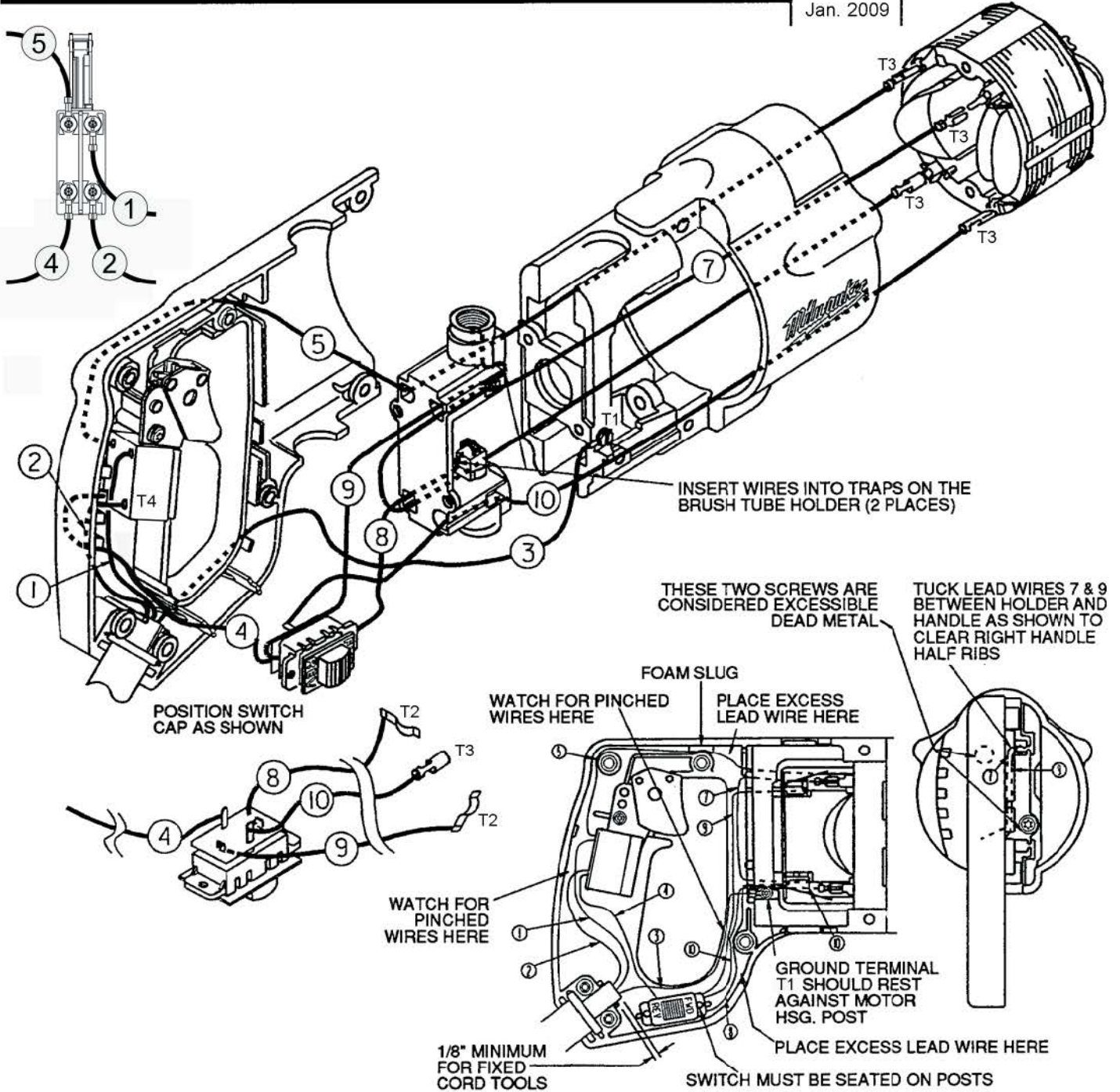
WIRING INSTRUCTIONS

TITLE

D-HANDLE TOOLS

DATE
Jan. 2009

BULLETIN
58-01-0226



WIRING SPECIFICATIONS

Wire No.	Wire Color	Origin or Part No.	Gauge	Length	Terminals, Connectors and End Wire Preparation
1	White	Cord	18	3-3/4"	Strip 3/16" for T4.
2	Black	Cord	18	3-3/4"	Strip 3/16" for T4.
3	Green	Cord	18	5-1/2"	Strip 3/16" for T1.
4	Black	Rev. Switch	18	5-1/4"	Strip 3/16" for T4.
5	White	23-94-4296	18	9-1/4"	Strip 3/16" for T3 / Strip 3/16" for T4.
7	Yellow	23-94-6110	18	5-5/16"	Strip both ends 3/16" for T3.
8	Black	Rev. Switch	18	5-1/4"	Strip 1/4" for T2.
9	Black	Rev. Switch	18	7-1/4"	Strip 1/4" for T2.
10	Brown	Rev. Switch	18	5-1/4"	Strip 3/16" for T3.

BULK LEAD WIRE - BULLETIN 58-01-0003

NOTE:

All leads must be held to $\pm 1/8"$.
All lead lengths are before stripping.

TERMINAL DESCRIPTION

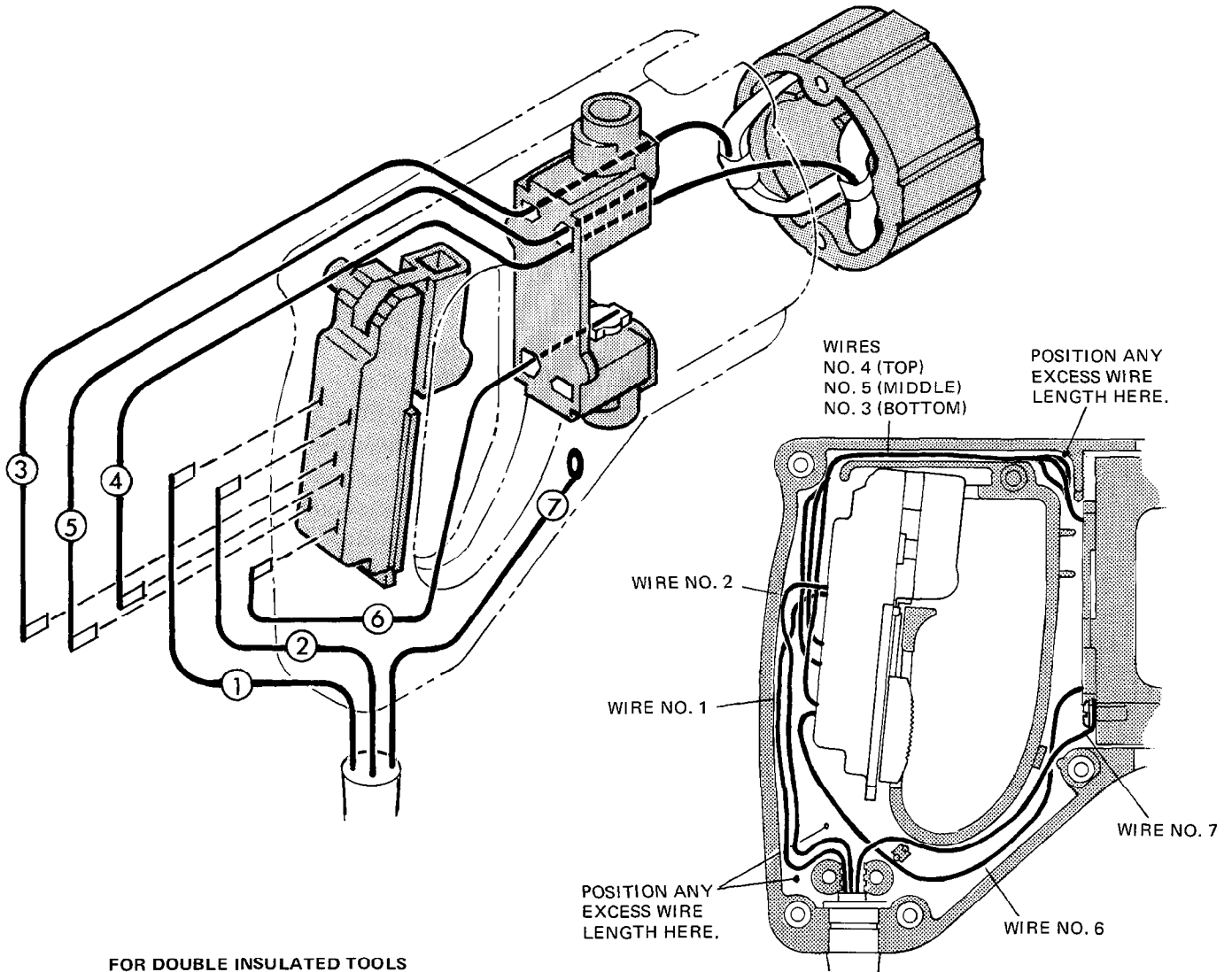
Code	Part No.	Qty.
T1	23-74-0896	1
T2	23-74-0410	2
T3	23-74-1060	4
T4	23-74-0850	4

WIRING INSTRUCTIONS

TITLE TRIPLE REDUCTION REVERSING "D" HANDLE TOOLS

BULLETIN
58-01-0243

DATE
Sept. '78



**FOR DOUBLE INSULATED TOOLS
DISREGARD WIRE NO. 7**

WIRING SPECIFICATIONS

Wire No.	Wire Color	Origin or Gauge	Length	Terminals, Connectors and 1 or 2 End Wire Preparation.
1	Black	Cord	4-3/4"	Strip 1/4" for T1
2	White	Cord	4-3/4"	Strip 1/4" for T1
3	Red	Field	9"	Strip 1/4" for T1
4	Brown	Field	9"	Strip 1/4" for T1
5	Yellow	18	9"	Strip 1/4" for T1/Strip 1/4" for T1
6	White	18	8-3/4"	Strip 1/4" for T1/Strip 1/4" for T1
7	Green	Cord	4-3/4"	Strip wire 3/16" for T2

NOTE:

All leads must be held to $\pm 1/8"$.
All field leads to be measured from and perpendicular to laminations.
All lead lengths are before stripping.

TERMINAL DESCRIPTION

Code	Part No.	Qty.
T1	22-44-0090	8
T2	23-74-0390	1

CONNECTOR DESCRIPTION

Code	Part No.	Qty.