



SERVICE PARTS LIST

BULLETIN NO.
54-08-1200

SPECIFY CATALOG NO. AND SERIAL NO. WHEN ORDERING PARTS		REVISED BULLETIN
1/2" REVERSING DRILL		
CATALOG NO. 1007-1	STARTING SERIAL NO. 628-1001	WIRING INSTRUCTION 58-01-0247
CAT. NO. 1007-6	START SER. NO. 628-1001	BILINGUAL LABEL 10-98-6400

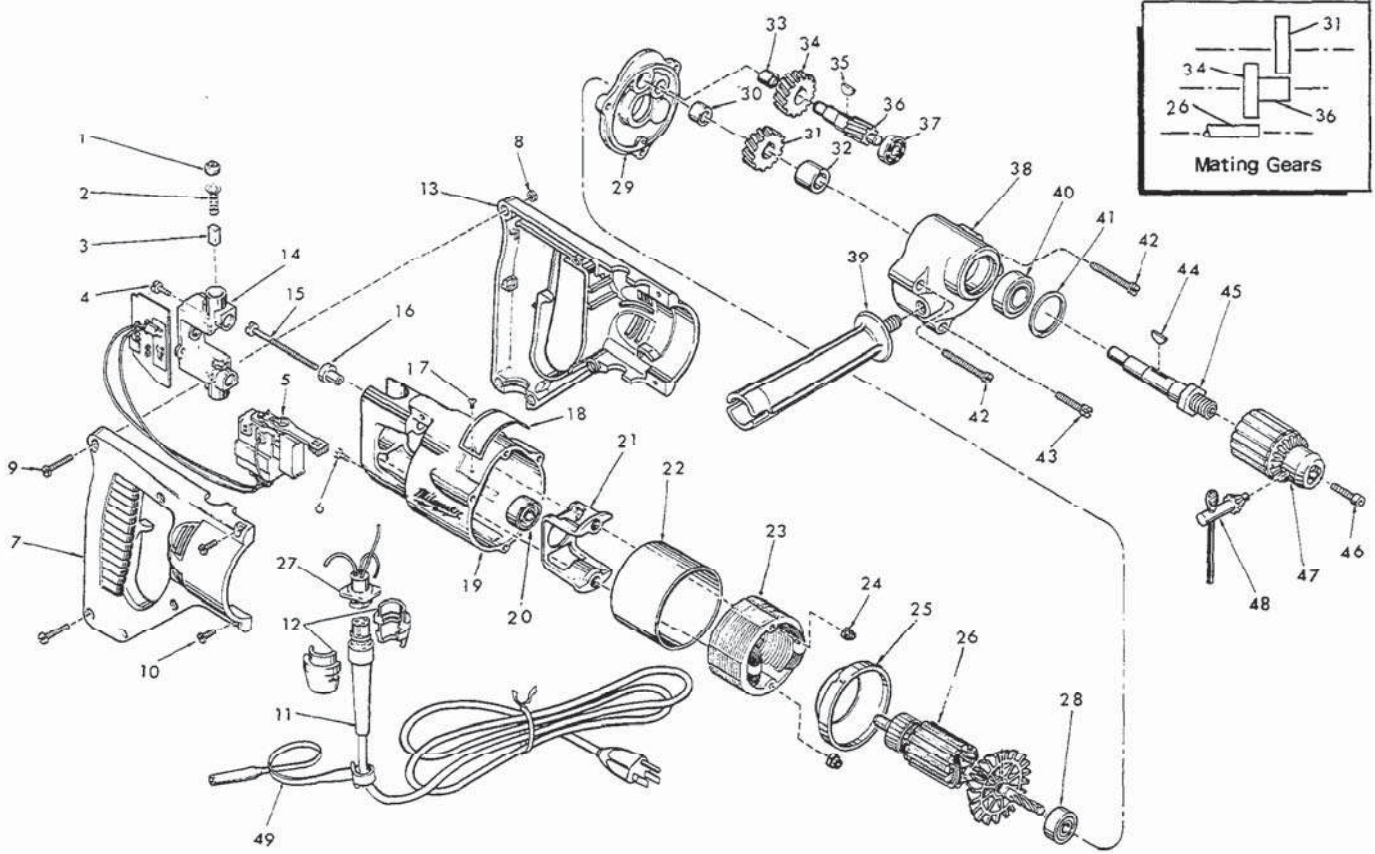


FIG.	PART NO.	DESCRIPTION OF PART	NO. REQ.	FIG.	PART NO.	DESCRIPTION OF PART	NO. REQ.
1	23-44-0120	Brush Retaining Screw	(2)	27	22-56-0391	Pin Housing Assy.	(1)
2	23-52-0160	Brush Spring	(2)	28	02-04-0940	Ball Bearing	(1)
3	22-16-0250	Carbon Brush	(2)	29	28-28-0582	Diaphragm	(1)
4	06-95-0116	6-32 x 5/8" Pan Hd. Taptite Screw	(2)	30	02-50-2110	Needle Bearing	(1)
5	23-66-1125	Switch	(1)	31	32-75-1601	Spindle Gear	(1)
6	06-95-5150	Ground Screw	(1)	32	45-36-0210	Spindle Gear Spacer	(1)
7	31-44-0630	R.H. Half D Handle	(1)	33	02-50-1640	Needle Bearing	(1)
8	06-55-0835	8-32 Hex Nut	(5)	34	32-40-1241	Intermediate Gear	(1)
9	06-81-0473	8-32 x 1" Pan Hd. Pozidriv Screw	(5)	35	06-42-0800	Woodruff Key	(1)
10	06-95-0700	8-32 x 1/2" Pan Hd. Taptite Screw	(4)	36	36-66-2001	Intermediate Shaft	(1)
11	48-76-3008	Cord Set (Includes Fig. No. 12)	(1)	37	02-04-0640	Ball Bearing	(1)
12	44-40-0440	Cord Nut	(2)	38	28-14-0686	Gear Case	(1)
13	31-44-0640	L.H. Half D Handle	(1)	39	43-62-0605	Side Handle	(1)
14	22-22-0302	Brush Holder Assembly	(1)	40	02-04-1560	Ball Bearing	(1)
15	06-81-1055	8-32x2-3/16 Field Bolt	(2)	41	34-80-2500	Retaining Ring	(1)
16	31-86-0120	Insulating Spacer	(2)	42	06-81-6707	8-32x1-7/8 Fil. Hd. Sem	(2)
17	06-85-0200	6x1/4 Rd. Hd. Type Z Screw	(2)	43	06-81-6402	8-32x1-1/8 Fil. Hd. Sem	(1)
18	12-99-0030	Nameplate	(1)	44	06-42-1600	Woodruff Key	(1)
19	28-50-6147	Motor Housing	(1)	45	38-50-3651	Spindle	(1)
20	02-04-0891	Ball Bearing	(1)	46	06-75-3150	1/4-20x1 L.H. Skt. Cap Screw	(1)
21	31-55-0030	Coil Shield	(1)	47	48-66-1360	1/2" Chuck (Includes Fig. 48)	(1)
22	23-16-0456	Field Insulator	(1)	48	48-66-3280	Chuck Key	(1)
23	18 30 0200	120 V. Field	(1)	49	48-66-4040	Key Holder	(1)
24	06-57-2975	8-32 Flexlock Hex Nut	(2)	50	10-98-5987	Warning Label (Not Shown)	(1)
25	31-05-0050	Baffle	(1)			Omit For Canadian Tools	
26	16-30-0310	120 V. Armature	(1)				



SERVICE PARTS LIST

BULLETIN NO.
54-08-1201

SPECIFY CATALOG NO. AND SERIAL NO. WHEN ORDERING PARTS		REVISED BULLETIN 54-08-1200	DATE Sept. '84
1/2" REVERSING DRILL			
CATALOG NO. 1007-1	STARTING SERIAL NO. 628-10000	WIRING INSTRUCTION 58-01-0247	
CAT. NO. 1007-6	START SER. NO. 628-10000	BILINGUAL LABEL 10-98-6400	

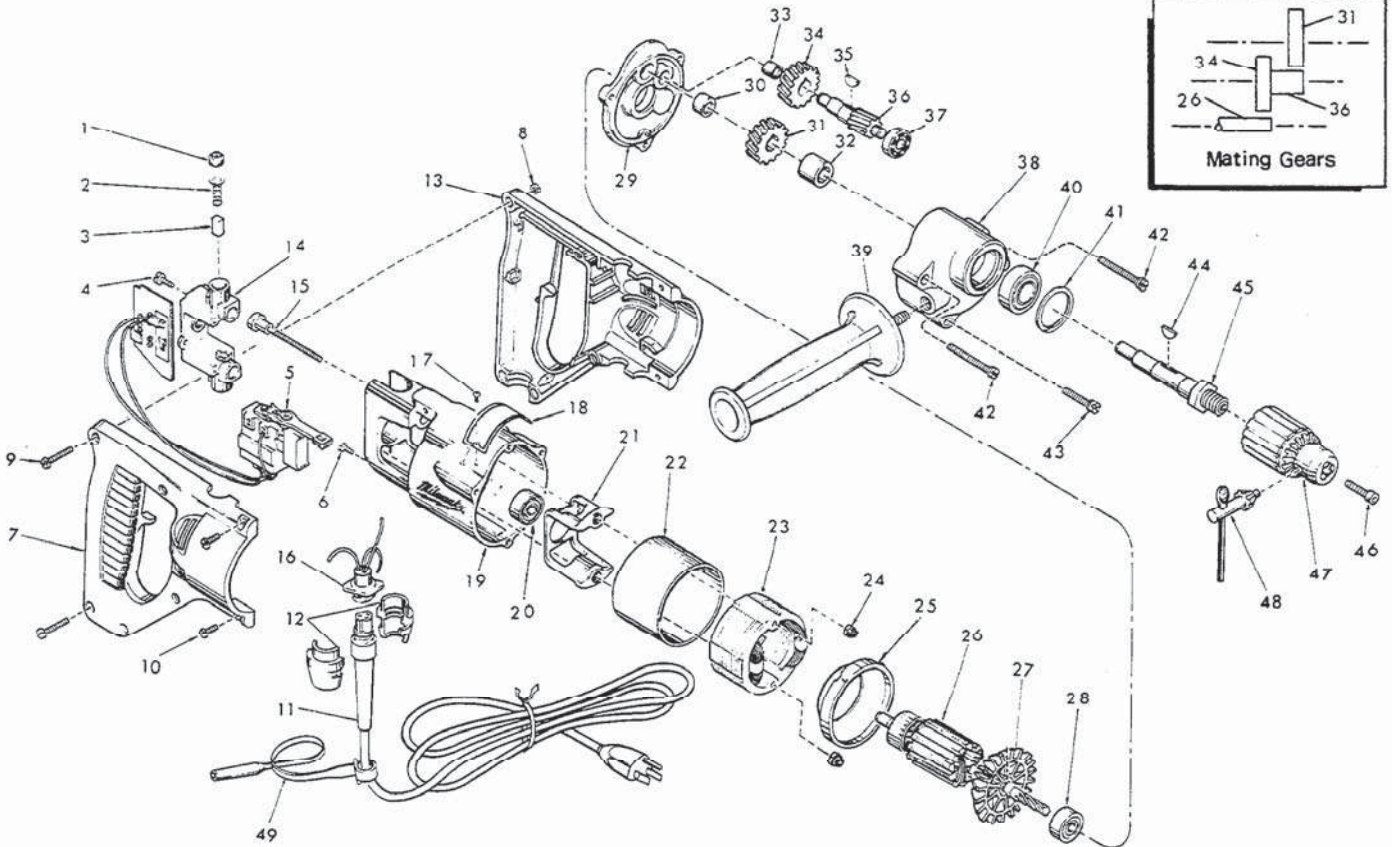


FIG.	PART NO.	DESCRIPTION OF PART	NO. REQ.
★1	23-44-0190	Brush Retaining Screw	(2)
2	23-52-0160	Brush Spring	(2)
★3	22-16-0275	Carbon Brush	(2)
★4	06-95-0075	6-32 x 3/8 Truc Hd. Taptite Screw	(2)
5	23-66-1125	Switch	(1)
6	06-95-5150	Ground Screw	(1)
7	31-44-0630	R.H. Half D Handle	(1)
8	06-55-0835	8-32 Hex Nut	(5)
9	06-81-0473	8-32 x 1" Pan Hd. Pozidriv Screw	(5)
10	06-95-0700	8-32 x 1/2" Pan Hd. Taptite Screw	(4)
11	48-76-3008	Cord Set (Includes Fig. No. 12)	(1)
12	44-40-0440	Cord Nut	(2)
13	31-44-0640	L.H. Half D Handle	(1)
★14	22-22-1330	Brush Holder Assembly	(1)
★15	06-81-1058	Insulated Field Bolt	(2)
16	22-56-0391	Pin Housing Assy.	(1)
17	06-85-0200	6x1/4 Rd. Hd. Type Z Screw	(2)
18	12-99-0030	Nameplate	(1)
★19	28-50-6201	Motor Housing	(1)
★20	02-04-0845	Ball Bearing	(1)
21	31-55-0030	Coil Shield	(1)
22	23-16-0456	Field Insulator	(1)
23	18-30-0200	120 V. Field	(1)
24	06-57-2975	8-32 Flexlock Hex Nut	(2)
25	31-05-0050	Baffle	(1)
★26	16-30-0325	120 V. Armature (Incl. Fig. No. 27)	(1)

FIG.	PART NO.	DESCRIPTION OF PART	NO. REQ.
★27	28-84-0530	Fan Assembly	(1)
★28	02-04-0911	Ball Bearing	(1)
★29	28-28-0585	Diaphragm	(1)
30	02-60-2110	Needle Bearing	(1)
31	32-75-1601	Spindle Gear	(1)
32	45-36-0210	Spindle Gear Spacer	(1)
33	02-50-1640	Needle Bearing	(1)
34	32-40-1241	Intermediate Gear	(1)
35	06-42-0800	Woodruff Key	(1)
36	36-66-2001	Intermediate Shaft	(1)
37	02-04-0640	Ball Bearing	(1)
38	28-14-0686	Gear Case	(1)
★39	43-62-0875	Side Handle	(1)
40	02-04-1560	Ball Bearing	(1)
41	34-80-2500	Retaining Ring	(1)
★42	06-95-5270	8-32x1-7/8 Fil. Hd. Sem	(2)
★43	06-95-5250	8-32x1-1/8 Fil. Hd. Sem	(1)
44	06-42-1600	Woodruff Key	(1)
45	38-50-3651	Spindle	(1)
46	06-75-3150	1/4-20x1 L.H. Skt. Cap Screw	(1)
47	48-66-1360	1/2" Chuck (Includes Fig. 48)	(1)
48	48-66-3280	Chuck Key	(1)
49	48-66-4040	Key Holder	(1)
50	10-98-5987	Warning Label (Not Shown) Omit For Canadian Tools	(1)



SERVICE PARTS LIST

BULLETIN NO.
54-08-1202

SPECIFY CATALOG NO. AND SERIAL NO. WHEN ORDERING PARTS		REVISED BULLETIN	DATE
1/2" REVERSING DRILL		54-08-1201	Nov. '85
CATALOG NO. 1007-1	STARTING SERIAL NO. 628-18000	WIRING INSTRUCTION	
		58-01-0247	
CAT. NO.	START SER. NO.	BILINGUAL LABEL	

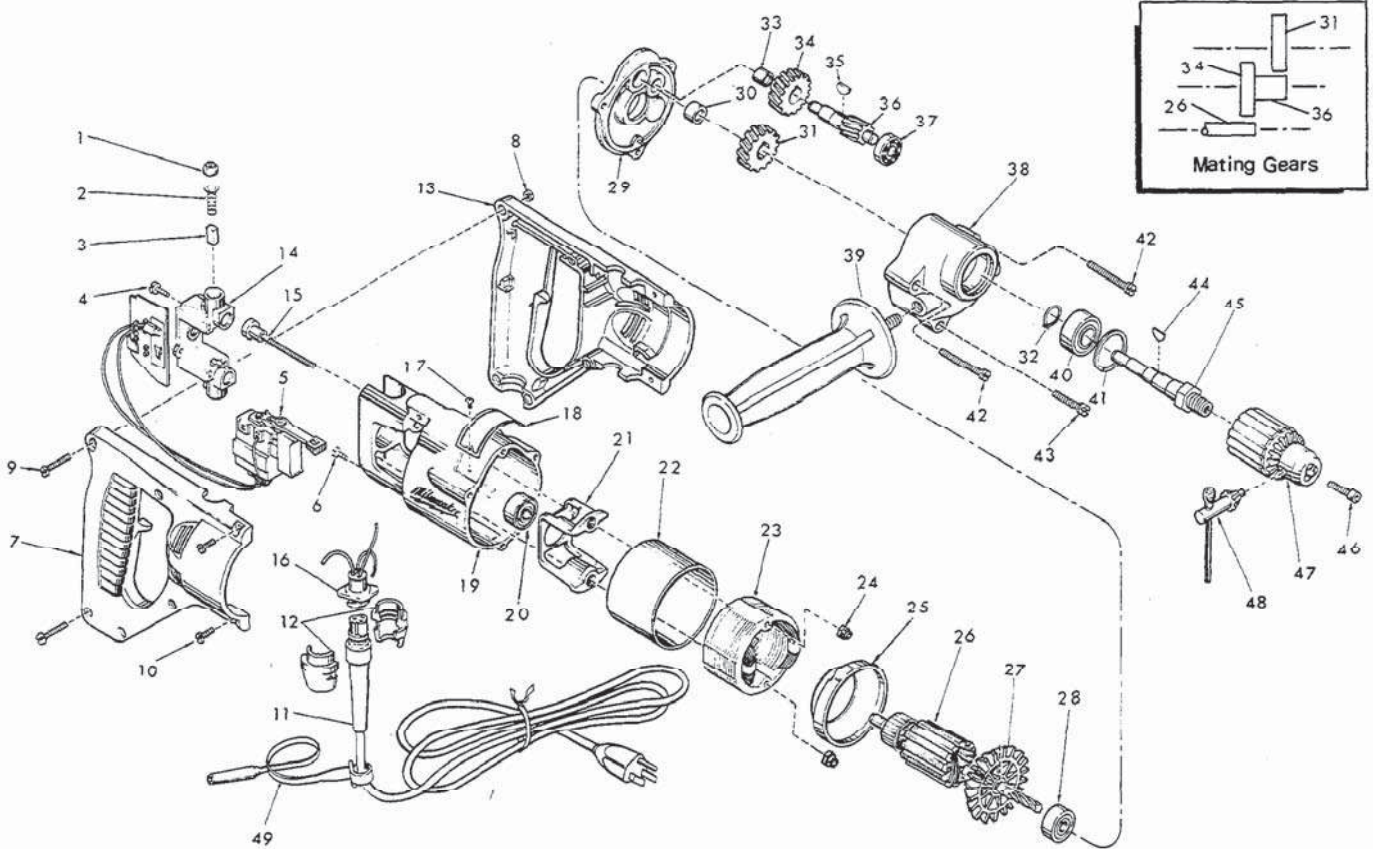


FIG.	PART NO.	DESCRIPTION OF PART	NO. REQ.	FIG.	PART NO.	DESCRIPTION OF PART	NO. REQ.
1	23-44-0190	Brush Retaining Screw	(2)	27	28-84-0530	Fan Assembly	(1)
2	23-52-0160	Brush Spring	(2)	28	02-04-0911	Ball Bearing	(1)
3	22-16-0275	Carbon Brush	(2)	29	28-28-0585	Diaphragm	(1)
4	06-95-0075	6-32 x 3/8 Trus Hd. Taptite Screw	(2)	★30	02-50-2440	Needle Bearing	(1)
5	23-66-1125	Switch	(1)	31	32-76-1601	Spindle Gear	(1)
6	06-95-5150	Ground Screw	(1)	★32	34-60-1200	Retaining Ring	(1)
7	31-44-0630	R.H. Half D Handle	(1)	33	02-50-1640	Needle Bearing	(1)
8	06-55-0835	8-32 Hex Nut	(5)	34	32-40-1241	Intermediate Gear	(1)
9	06-81-0473	8-32 x 1" Pan Hd. Pozidriv Screw	(5)	35	06-42-0800	Woodruff Key	(1)
10	06-95-0700	8-32 x 1/2" Pan Hd. Taptite Screw	(4)	36	36-66-2001	Intermediate Shaft	(1)
11	48-76-3008	Cord Set (Includes Fig. No. 12)	(1)	37	02-04-0640	Ball Bearing	(1)
12	44-40-0440	Cord Nut	(2)	38	28-14-0686	Gear Case	(1)
13	31-44-0640	L.H. Half D Handle	(1)	39	43-62-0875	Side Handle	(1)
14	22-22-1330	Brush Holder Assembly	(1)	★40	02-04-1536	Ball Bearing	(1)
15	06-81-1058	Insulated Field Bolt	(2)	41	34-80-2500	Retaining Ring	(1)
16	22-66-0391	Pin Housing Assy.	(1)	42	06-95-5270	8-32x1-7/8 Fil. Hd. Sem	(2)
17	06-85-0200	6x1/4 Rd. Hd. Type Z Screw	(2)	43	06-95-5250	8-32x1-1/8 Fil. Hd. Sem	(1)
18	12-99-0030	Nameplate	(1)	44	06-42-1600	Woodruff Key	(1)
19	28-50-6201	Motor Housing	(1)	★45	38-50-5470	Spindle	(1)
20	02-04-0845	Ball Bearing	(1)	46	06-75-3150	1/4-20x1 L.H. Skt. Cap Screw	(1)
21	31-55-0030	Coil Shield	(1)	47	48-66-1360	1/2" Chuck (Includes Fig. 48)	(1)
22	23-16-0456	Field Insulator	(1)	48	48-66-3280	Chuck Key	(1)
23	18-30-0200	120 V. Field	(1)	49	48-66-4040	Key Holder	(1)
24	06-57-2975	8-32 Flexlock Hex Nut	(2)	★50	10-98-5986	Warning Label (Not Shown)	(1)
25	31-05-0050	Baffle	(1)				
26	16-30-0325	120 V. Armature (Incl. Fig. No. 27)	(1)				



SERVICE PARTS LIST

BULLETIN NO.
54-08-1203

SPECIFY CATALOG NO. AND SERIAL NO. WHEN ORDERING PARTS		REVISED BULLETIN 54-08-1202	DATE Oct. '87
1/2" REVERSING DRILL		WIRING INSTRUCTION 58-01-0281	
CATALOG NO. 1007-1	STARTING SERIAL NO. 628-21000		

EXAMPLE:

00/0

Component Parts (Small #) Are Included When Ordering The Assembly Part (Large #).

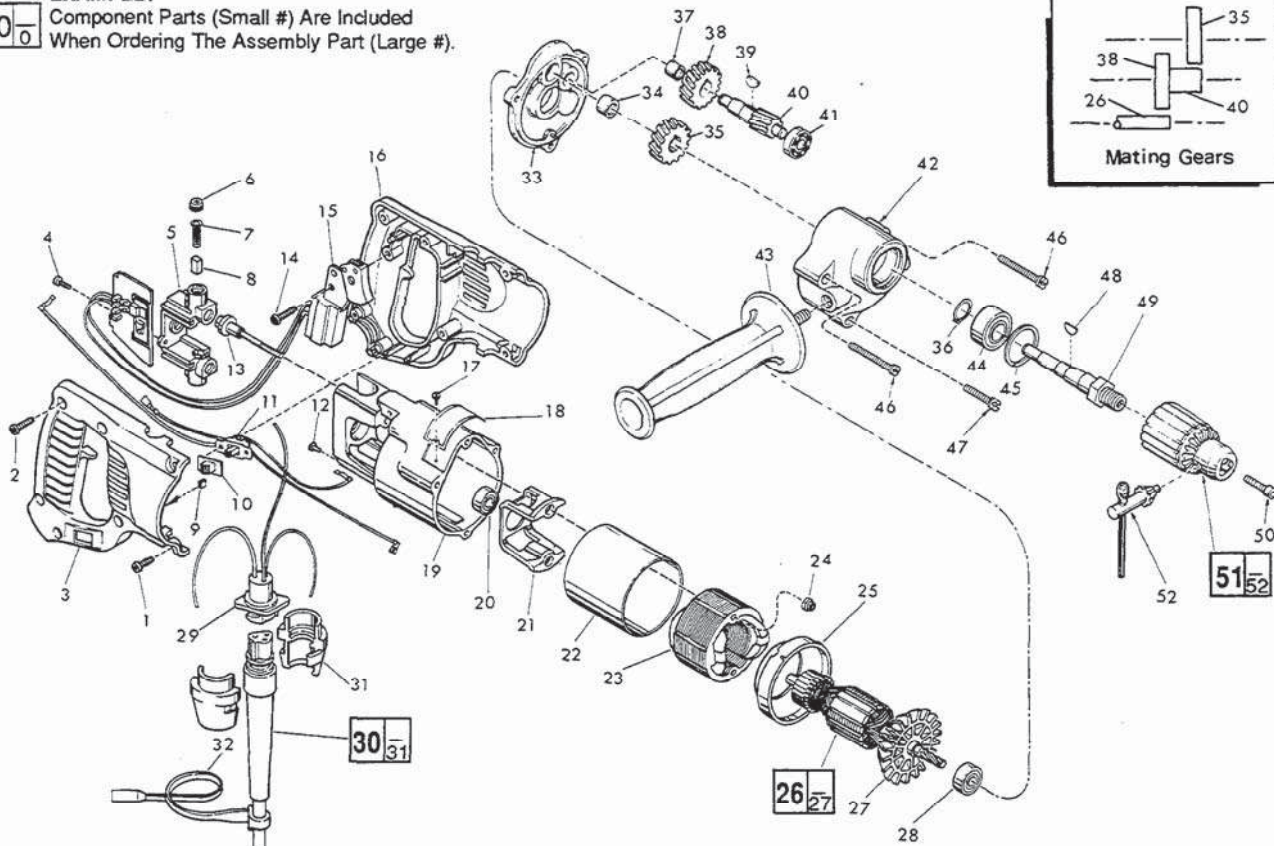


FIG.	PART NO.	DESCRIPTION OF PART	NO. REQ.	FIG.	PART NO.	DESCRIPTION OF PART	NO. REQ.
★ 1	06-82-5316	8-32x1/2" Slot Pan Hd. Torx Screw	(4)	31	44-40-0440	Cord Nut	(2)
★ 2	06-82-7260	7-18 x 5/8" Pan Hd. Plastite Torx Screw	(5)	32	48-66-4040	Key Holder	(1)
★ 3	31-44-1476	Right Handle Half	(1)	★ 33	28-28-0586	Diaphragm	(1)
4	06-95-0075	6-32 x 3/8" Truss Hd. Taptite Screw	(2)	34	02-50-2440	Needle Bearing	(1)
5	22-22-1330	Brush Holder Assembly	(1)	35	32-75-1601	Spindle Gear	(1)
6	23-44-0190	Brush Retaining Cap	(2)	36	34-60-1200	Retaining Ring	(1)
7	23-52-0160	Brush Spring	(2)	37	02-50-1640	Needle Bearing	(1)
8	22-16-0275	Carbon Brush	(2)	38	32-40-1241	Intermediate Gear	(1)
★ 9	42-38-0240	Bumper	(2)	39	06-42-0800	Woodruff Key	(1)
★ 10	31-12-0195	Switch Cap	(1)	40	36-66-2001	Intermediate Shaft	(1)
★ 11	23-66-1454	Switch Assembly	(1)	41	02-04-0640	Ball Bearing	(1)
12	06-95-5150	6-32 x 1/4" Hex Hd. Taptite Sems	(1)	★ 42	28-14-1910	Gear Case	(1)
13	06-81-1058	8-32 x 2.19 Field Bolt	(2)	43	43-62-0875	Side Handle	(1)
14	06-82-7260	7-18 x 5/8" Pan Hd. Plastite Torx Screw	(1)	44	02-04-1536	Ball Bearing	(1)
★ 15	23-66-0955	On-Off Switch	(1)	45	34-80-2500	Retaining Ring	(1)
★ 16	31-44-1481	Left Handle Half	(1)	★ 46	06-82-5502	8-32 x 2-1/4" Pan Taptite Torx	(2)
17	06-85-0200	Nameplate Screw	(2)	★ 47	06-82-5404	8-32 x 1-3/8" Pan Taptite Torx	(1)
★ 18	12-99-0043	Nameplate Blank	(1)	48	06-42-1600	Woodruff Key	(1)
19	28-50-6201	Motor Housing	(1)	49	38-50-5470	Spindle	(1)
20	02-04-0845	Ball Bearing	(1)	50	06-75-3150	1/4-20 x 1 L.H. Skt. Cap Screw	(1)
21	31-55-0030	Coil Shield	(1)	51	48-66-1360	1/2" Chuck Key	(1)
22	23-16-0456	Field Insulator	(1)	52	48-66-3280	Chuck Key	(1)
23	18-30-0200	120 V. Field	(1)				
24	06-57-2975	8-32 Flexlock Hex Nut	(2)				
25	31-05-0050	Baffle	(1)				
26	16-30-0325	120 V. Armature	(1)				
27	22-84-0530	Fan Assembly	(1)				
28	02-04-0911	Ball Bearing	(1)				
★ 29	22-56-0540	Pin Housing Assy.	(1)				
30	48-76-3008	Cord Set	(1)				

LUBRICATION:

42 3-1/4 Oz. Type "A" Grease, 49-08-0800.



SERVICE PARTS LIST

BULLETIN NO.
54-08-1204

SPECIFY CATALOG NO. AND SERIAL NO. WHEN ORDERING PARTS		REVISED BULLETIN	DATE
1/2" REVERSING DRILL		54-08-1203	April '89
CATALOG NO. 1007-1	STARTING SERIAL NO. 628-31000	WIRING INSTRUCTION 58-01-0283	

00 0

EXAMPLE:
Component Parts (Small #)
Are Included When Ordering
The Assembly (Large #).

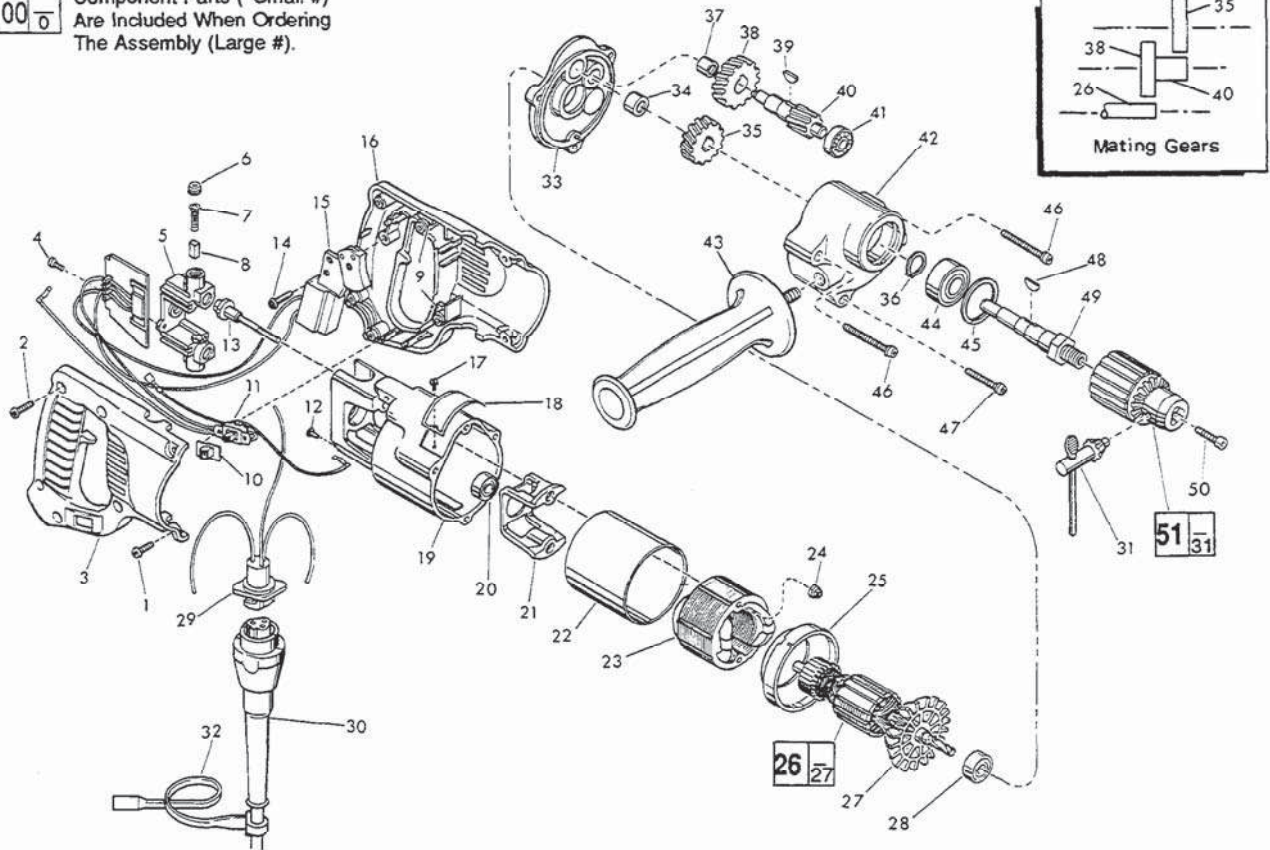


FIG.	PART NO.	DESCRIPTION OF PART	NO. REQ.
	1	06-82-5316 8-32x1/2" Slot Pan Hd. Torx Screw	(4)
	2	06-82-7260 7-18 x 5/8" Pan Hd. Plastite Torx Screw	(5)
	3	31-44-1476 Right Handle Half	(1)
	4	06-95-0075 6-32 x 3/8" Truss Hd. Taptite Screw	(2)
	5	22-22-1330 Brush Holder Assembly	(1)
	6	23-44-0190 Brush Retaining Cap	(2)
	7	23-52-0160 Brush Spring	(2)
	8	22-16-0275 Carbon Brush	(2)
★	9	14-46-1001 Foam Slug Kit-10 Slugs	(2)
★	10	31-12-0196 Switch Cap	(1)
★	11	14-20-0355 Switch Assembly	(1)
	12	06-95-5150 6-32 x 1/4" Hex Hd. Taptite Sems	(1)
	13	06-81-1058 8-32 x 2.19 Field Bolt	(2)
	14	06-82-7260 7-18 x 5/8" Pan Hd. Plastite Torx Screw	(1)
★	15	23-66-1470 On-Off Switch	(1)
★	16	31-44-1481 Left Handle Half	(1)
	17	06-85-0200 Nameplate Screw	(2)
★	18	12-99-0530 Nameplate Blank	(1)
	19	28-50-6201 Motor Housing	(1)
	20	02-04-0845 Ball Bearing	(1)
	21	31-55-0030 Coil Shield	(1)
	22	23-16-0456 Field Insulator	(1)
	23	18-30-0200 120 V. Field	(1)
	24	06-57-2975 8-32 Flexlock Hex Nut	(2)
	25	31-05-0050 Baffle	(1)
	26	16-30-0325 120 V. Armature	(1)
	27	22-84-0530 Fan Assembly	(1)
	28	02-04-0911 Ball Bearing	(1)
★	29	22-56-0541 Pin Housing Assy.	(1)
★	30	48-76-4008 Cord Set	(1)

FIG.	PART NO.	DESCRIPTION OF PART	NO. REQ.
	31	48-66-3280 Chuck Key	(1)
	32	48-66-4040 Key Holder	(1)
★	33	28-28-0601 Diaphragm	(1)
	34	02-50-2440 Needle Bearing	(1)
	35	32-75-1601 Spindle Gear	(1)
	36	34-60-1200 Retaining Ring	(1)
	37	02-50-1640 Needle Bearing	(1)
	38	32-40-1241 Intermediate Gear	(1)
	39	06-42-0800 Woodruff Key	(1)
	40	36-66-2001 Intermediate Shaft	(1)
	41	02-04-0640 Ball Bearing	(1)
	42	28-14-1910 Gear Case	(1)
	43	43-62-0875 Side Handle	(1)
	44	02-04-1536 Ball Bearing	(1)
	45	34-80-2500 Retaining Ring	(1)
	46	06-82-5502 8-32 x 2-1/4" Pan Taptite Torx	(2)
	47	06-82-5404 8-32 x 1-3/8" Pan Taptite Torx	(1)
	48	06-42-1600 Woodruff Key	(1)
	49	38-50-5470 Spindle	(1)
	50	06-75-3150 1/4-20 x 1 L.H. Skt. Cap Screw	(1)
★	51	48-66-1365 1/2" Chuck	(1)

LUBRICATION:

42 3-1/4 Oz. Type "A" Grease, No. 49-08-0800.



SERVICE PARTS LIST

**BULLETIN NO.
54-08-1205**

SPECIFY CATALOG NO. AND SERIAL NO. WHEN ORDERING PARTS		REVISED BULLETIN 54-08-1204	DATE Jan. '95
1/2" REVERSING DRILL		WIRING INSTRUCTION 58-01-0288	
CATALOG NO.	1007-1	STARTING SERIAL NO.	628-38667

EXAMPLE:
Component Parts (Small #)
Are Included When Ordering
The Assembly (Large #).

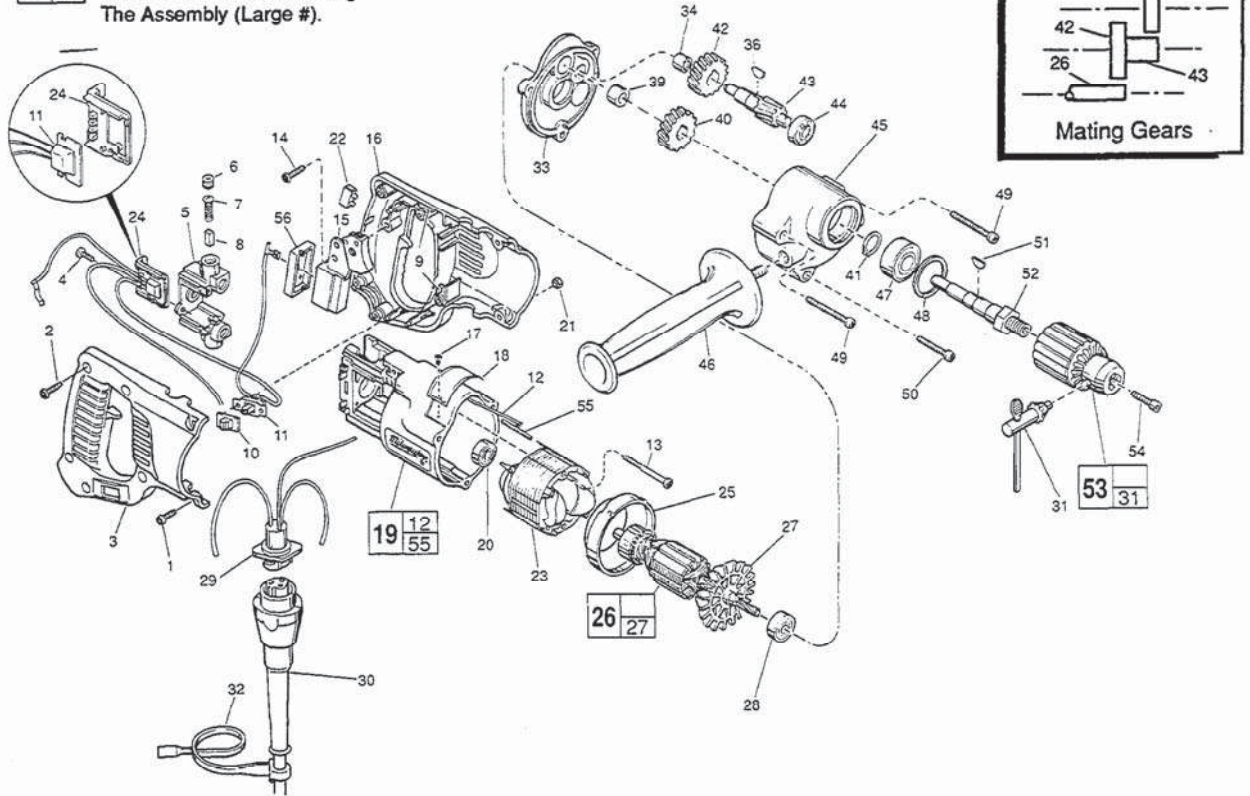


FIG.	PART NO.	DESCRIPTION OF PART	NO. REQ.
★ 1	06-82-5390	8-32x1-1/4" Taptite T-20	(2)
★ 2	06-82-7270	8-16 x 5/8" Pan Hd. Plastite T-20	(5)
★ 3	31-44-1660	Right Handle Half	(1)
★ 4	06-82-7240	6-19 x 1/2" Pan Hd. Plastite T-15	(2)
★ 5	22-22-1380	Brush Holder Assembly	(1)
6	23-44-0190	Brush Retaining Cap	(2)
7	23-52-0160	Brush Spring	(2)
8	22-16-0275	Carbon Brush	(2)
9	14-46-1001	Foam Slug Kit-10 Slugs	(2)
★ 10	31-12-0196	Switch Cap	(1)
★ 11	14-20-0357	Switch Assembly	(1)
★ 12	23-94-6100	Ground Wire Assembly	(1)
★ 13	06-82-7410	8-16 x 1-7/8" Pan Hd Slit. Plastite T-20	(2)
★ 14	06-82-7270	8-16 x 5/8" Pan Hd. Plastite T-20	(1)
★ 15	23-66-1490	On-Off Switch	(1)
16	31-44-1665	Left Handle Half	(1)
★ 17	06-85-0200	Nameplate Screw	(2)
★ 18	12-99-0515	Nameplate Blank	(1)
19	31-50-0846	Motor Housing Assembly	(1)
★ 20	02-04-0845	Ball Bearing	(1)
★ 21	06-55-0835	8-32 Hex Nut	(2)
★ 22	22-56-0456	Terminal Block	(1)
★ 23	18-31-0200	120 V. Field	(1)
24	43-72-0175	Heat Sink Holder	(1)
25	31-05-0050	Baffle	(1)
★ 26	16-30-0325	120 V. Armature	(1)
27	22-84-0531	Fan Assembly	(1)
★ 28	02-04-0911	Ball Bearing	(1)
29	22-56-0542	Pin Housing Assy.	(1)
30	48-76-4008	Cord Set	(1)

FIG.	PART NO.	DESCRIPTION OF PART	NO. REQ.
31	48-66-3280	Chuck Key	(1)
32	48-66-4040	Key Holder	(1)
33	28-28-0601	Diaphragm	(1)
34	02-50-1640	Needle Bearing	(1)
36	06-42-0800	Woodruff Key	(1)
39	02-50-2440	Needle Bearing	(1)
40	32-75-1601	Spindle Gear	(1)
41	34-60-1200	Retaining Ring	(1)
42	32-40-1241	Spindle Gear	(1)
★ 43	36-66-2002	Intermediate Shaft	(1)
44	02-04-0640	Ball Bearing	(1)
45	28-14-1910	Gear Case	(1)
46	43-62-0875	Side Handle	(1)
47	02-04-1536	Ball Bearing	(1)
48	34-80-2500	Retaining Ring	(1)
★ 49	06-82-7453	8-16 x 2-1/4" Pan Hd. Plastite T-20	(2)
★ 50	06-82-7354	8-16 x 1-3/8" Pan Hd. Plastite T-20	(1)
51	06-42-1600	Woodruff Key	(1)
52	38-50-5470	Spindle	(1)
53	48-66-1360	1/2" Chuck	(1)
54	06-75-3150	1/4-20 x 1 L.H. Skt. Cap Screw	(1)
★ 55	44-60-0530	Ground Pin	(1)
★ 56	45-12-0470	Dust Shield	(1)

LUBRICATION:

45 3-1/4 Oz. Type "A" Grease, No. 49-08-0800.

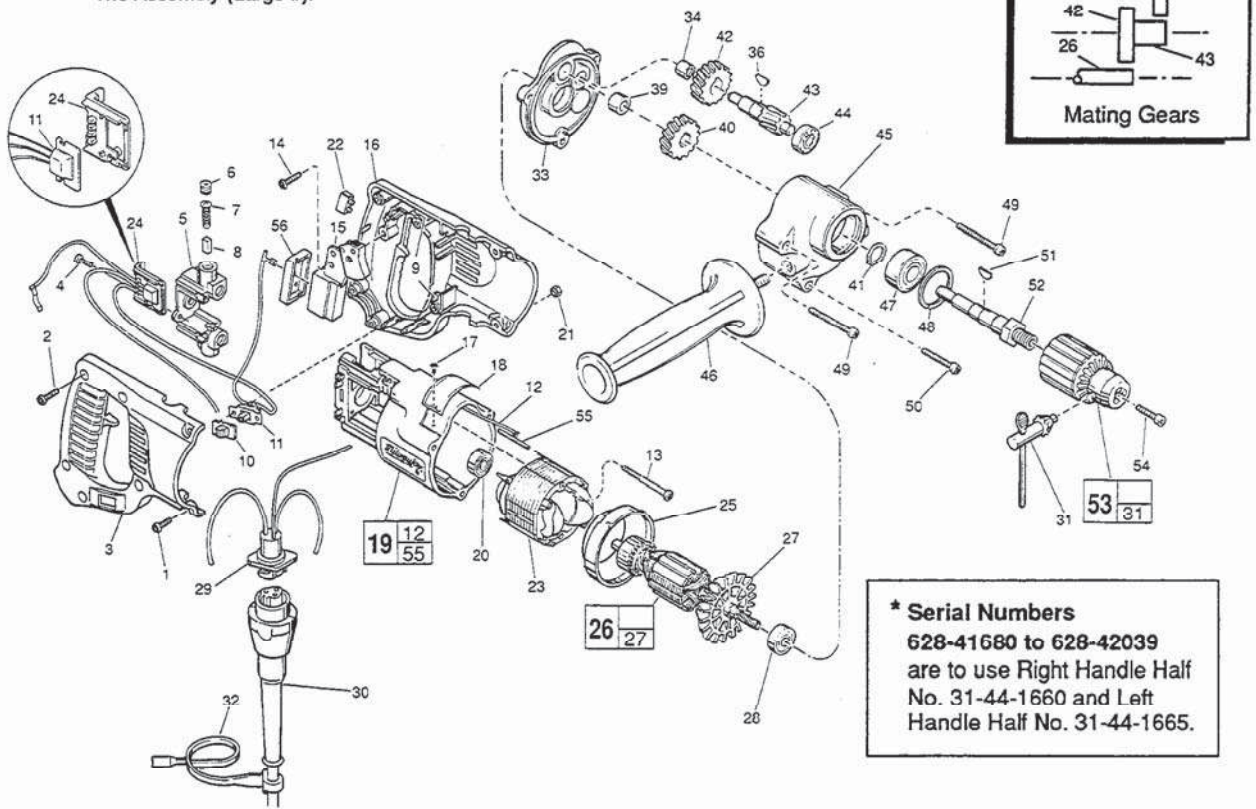


SERVICE PARTS LIST

BULLETIN NO.
54-08-1206

SPECIFY CATALOG NO. AND SERIAL NO. WHEN ORDERING PARTS		REVISED BULLETIN	DATE
1/2" REVERSING DRILL		54-08-1205	Jan. 95
CATALOG NO.	1007-1	WIRING INSTRUCTION	
STARTING SERIAL NO.	628-40987*	58-01-0288	

EXAMPLE:
Component Parts (Small #)
Are Included When Ordering
The Assembly (Large #).



*** Serial Numbers**
628-41660 to 628-42039
are to use Right Handle
No. 31-44-1660 and Left
Handle Half No. 31-44-1665.

FIG.	PART NO.	DESCRIPTION OF PART	NO. REQ.
1	06-82-5390	8-32x1-1/4" Taprite T-20	(2)
2	06-82-7270	8-16 x 5/8" Pan Hd. Plastite T-20	(5)
★ 3	31-44-1661	Right Handle Half	(1)
4	06-82-7240	6-19 x 1/2" Pan Hd. Plastite T-15	(2)
5	22-22-1380	Brush Holder Assembly	(1)
6	23-44-0190	Brush Retaining Cap	(2)
7	23-52-0160	Brush Spring	(2)
8	22-16-0275	Carbon Brush	(2)
9	14-46-1001	Foam Slug Kit-10 Slugs	(2)
10	31-12-0196	Switch Cap	(1)
11	14-20-0357	Switch Assembly	(1)
12	23-94-6100	Ground Wire Assembly	(1)
13	06-82-7410	8-16 x 1-7/8" Pan Hd Stt. Plastite T-20	(2)
14	06-82-7270	8-16 x 5/8" Pan Hd. Plastite T-20	(1)
15	23-66-1490	On-Off Switch	(1)
★ 16	31-44-1666	Left Handle Half	(1)
17	06-85-0200	Nameplate Screw	(2)
18	12-99-0515	Nameplate Blank	(1)
19	31-50-0846	Motor Housing Assembly	(1)
20	02-04-0845	Ball Bearing	(1)
21	06-55-0835	8-32 Hex Nut	(2)
22	22-56-0456	Terminal Block	(1)
23	18-31-0200	120 V. Field	(1)
24	43-72-0175	Heat Sink Holder	(1)
25	31-05-0050	Baffle	(1)
26	16-30-0325	120 V. Armature	(1)
27	22-84-0531	Fan Assembly	(1)
28	02-04-0911	Ball Bearing	(1)
29	22-56-0542	Pin Housing Assy.	(1)
30	48-76-4008	Cord Set	(1)

FIG.	PART NO.	DESCRIPTION OF PART	NO. REQ.
31	48-66-3280	Chuck Key	(1)
32	48-66-4040	Key Holder	(1)
33	28-28-0601	Diaphragm	(1)
34	02-50-1640	Needle Bearing	(1)
36	06-42-0800	Woodruff Key	(1)
39	02-50-2440	Needle Bearing	(1)
40	32-75-1601	Spindle Gear	(1)
41	34-60-1200	Retaining Ring	(1)
42	32-40-1241	Spindle Gear	(1)
43	36-66-2002	Intermediate Shaft	(1)
44	02-04-0640	Ball Bearing	(1)
45	28-14-1910	Gear Case	(1)
46	43-62-0875	Side Handle	(1)
47	02-04-1536	Ball Bearing	(1)
48	34-80-2500	Retaining Ring	(1)
49	06-82-7453	8-16 x 2-1/4" Pan Hd. Plastite T-20	(2)
50	06-82-7354	8-16 x 1-3/8" Pan Hd. Plastite T-20	(1)
51	06-42-1600	Woodruff Key	(1)
52	38-50-5470	Spindle	(1)
53	48-66-1360	1/2" Chuck	(1)
54	06-75-3150	1/4-20 x 1 L.H. Skt. Cap Screw	(1)
55	44-60-0530	Ground Pin	(1)
56	45-12-0470	Dust Shield	(1)

LUBRICATION:
45 3-1/4 Oz. Type "A" Grease, No. 49-08-0800.



SERVICE PARTS LIST

BULLETIN NO.
54-08-1207

SPECIFY CATALOG NO. AND SERIAL NO. WHEN ORDERING PARTS		REVISED BULLETIN	DATE
1/2" REVERSING DRILL		54-08-1206	Mar. '95
CATALOG NO.	1007-1	WIRING INSTRUCTION	
STARTING SERIAL NO.	628A	58-01-0288	

EXAMPLE:
Component Parts (Small #)
Are Included When Ordering
The Assembly (Large #).



FOR SERIAL NUMBERS:
628A395070082 TO
628A395070119 USE SERVICE
PARTS LIST ON BACK SIDE

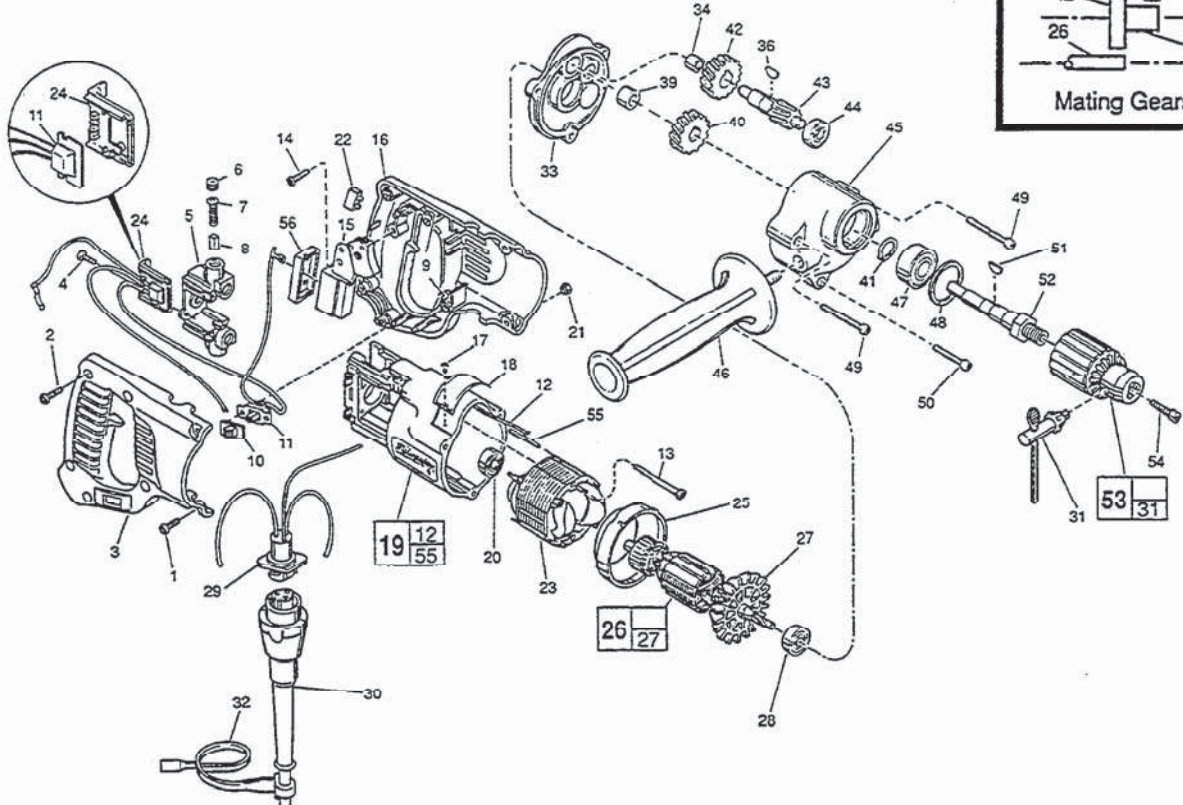
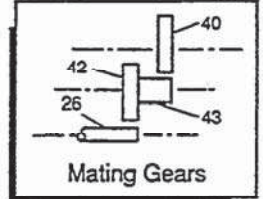


FIG.	PART NO.	DESCRIPTION OF PART	NO. REQ.	FIG.	PART NO.	DESCRIPTION OF PART	NO. REQ.
1	06-82-5390	8-32x1-1/4" Taptite T-20	(2)	31	48-66-3280	Chuck Key	(1)
2	06-82-7270	8-16 x 5/8" Pan Hd. Plastite T-20	(5)	32	48-66-4040	Key Holder	(1)
3	31-44-1661	Right Handle Half	(1)	33	28-28-0601	Diaphragm	(1)
4	06-82-7240	6-19 x 1/2" Pan Hd. Plastite T-15	(2)	34	02-50-1640	Needle Bearing	(1)
5	22-22-1380	Brush Holder Assembly	(1)	36	06-42-0800	Woodruff Key	(1)
6	23-44-0190	Brush Retaining Cap	(2)	39	02-50-2440	Needle Bearing	(1)
7	23-52-0160	Brush Spring	(2)	40	32-75-1601	Spindle Gear	(1)
8	22-16-0275	Carbon Brush	(2)	41	34-60-1200	Retaining Ring	(1)
9	14-46-1001	Foam Slug Kit-10 Slugs	(2)	42	32-40-1241	Spindle Gear	(1)
10	31-12-0196	Switch Cap	(1)	43	36-66-2002	Intermediate Shaft	(1)
11	14-20-0357	Switch Assembly	(1)	44	02-04-0640	Ball Bearing	(1)
12	23-94-6100	Ground Wire Assembly	(1)	45	28-14-1910	Gear Case	(1)
13	06-82-7410	8-16 x 1-7/8" Pan Hd. Sit. Plastite T-20	(2)	46	43-62-0875	Side Handle	(1)
14	06-82-7270	8-16 x 5/8" Pan Hd. Plastite T-20	(1)	47	02-04-1536	Ball Bearing	(1)
15	23-66-1490	On-Off Switch	(1)	48	34-80-2500	Retaining Ring	(1)
16	31-44-1666	Left Handle Half	(1)	49	06-82-7453	8-16 x 2-1/4" Pan Hd. Plastite T-20	(2)
★ 17	06-72-1720	Nameplate Rivet	(2)	50	06-82-7354	8-16 x 1-3/8" Pan Hd. Plastite T-20	(1)
★ 18	12-99-1750	Service Nameplate	(1)	51	06-42-1600	Woodruff Key	(1)
19	31-50-0846	Motor Housing Assembly	(1)	52	38-50-5470	Spindle	(1)
20	02-04-0845	Ball Bearing	(1)	53	48-66-1360	1/2" Chuck	(1)
21	06-55-0835	8-32 Hex Nut	(2)	54	06-75-3150	1/4-20 x 1 L.H. Skt. Cap Screw	(1)
22	22-56-0456	Terminal Block	(1)	55	44-60-0530	Ground Pin	(1)
23	18-31-0200	120 V. Field	(1)	56	45-12-0470	Dust Shield	(1)
24	43-72-0175	Heat Sink Holder	(1)				
25	31-05-0050	Baffle	(1)				
26	16-30-0325	120 V. Armature	(1)				
27	22-84-0531	Fan Assembly	(1)				
28	02-04-0911	Ball Bearing	(1)				
29	22-56-0542	Pin Housing Assy.	(1)				
30	48-76-4008	Cord Set	(1)				

LUBRICATION:

45 3-1/4 Oz. Type "A" Grease, No. 49-08-0800.



SERVICE PARTS LIST

BULLETIN NO.

SPECIFY CATALOG NO. AND SERIAL NO. WHEN ORDERING PARTS		REVISED BULLETIN	DATE
1/2" REVERSING DRILL			
CATALOG NO. 1007-1	STARTING SERIAL NO.	WIRING INSTRUCTION 58-01-0298	

EXAMPLE:
 Component Parts (Small #)
 Are Included When Ordering
 The Assembly (Large #).

00

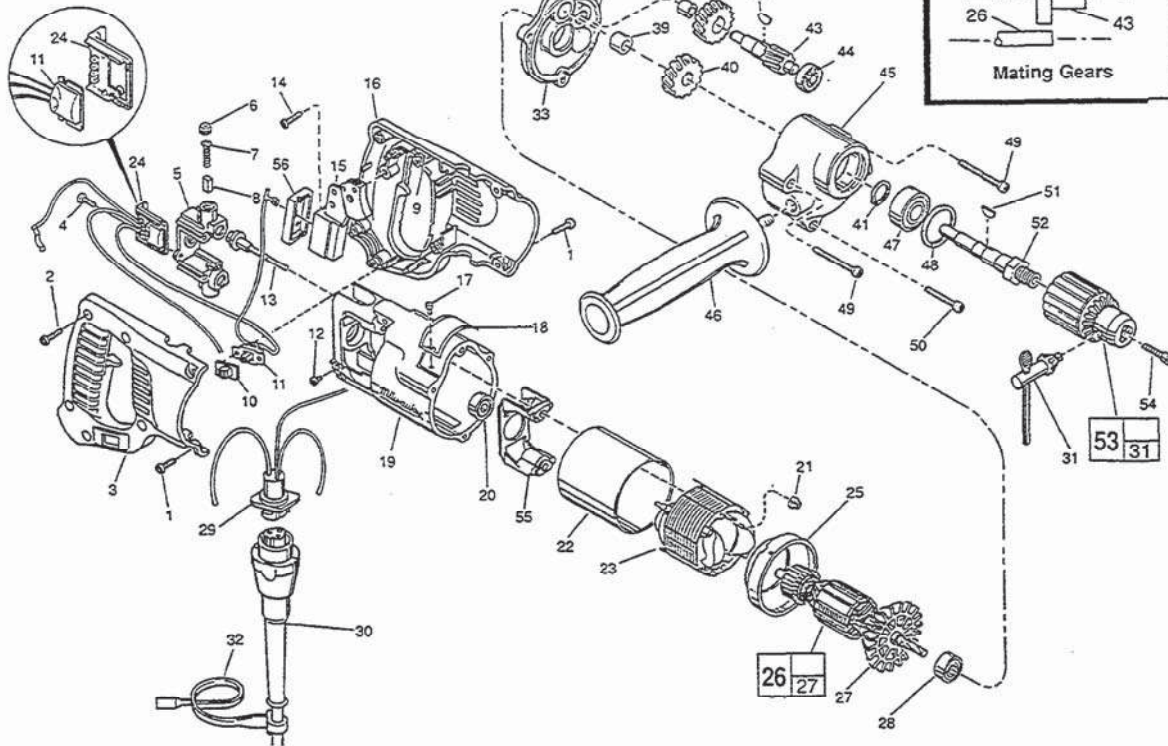


FIG.	PART NO.	DESCRIPTION OF PART	NO. REQ.
★ 1	06-82-5316	8-32 x 1/2" Slit Pan Hd. Taptite T-20	(4)
2	06-82-7270	8-16 x 5/8" Pan Hd. Plastite T-20	(5)
3	31-44-1661	Right Handle Half	(1)
★ 4	06-95-0075	6-32 x 3/8" Truss Hd. Taptite T-10	(2)
5	22-22-1380	Brush Holder Assembly	(1)
6	23-44-0190	Brush Retaining Cap	(2)
7	23-52-0160	Brush Spring	(2)
8	22-16-0275	Carbon Brush	(2)
★ 9	14-46-1001	Foam Slug Kit-10 Slugs	(1)
10	31-12-0196	Switch Cap	(1)
11	14-20-0357	Switch Assembly	(1)
★ 12	06-95-5150	6-32 x 1/4" Hex Hd. Taptite Sems	(1)
★ 13	06-81-1060	8-32 x 2-1/4" Field Bolt	(2)
14	06-82-7270	8-16 x 5/8" Pan Hd. Plastite T-20	(1)
15	23-66-1490	On-Off Switch	(1)
16	31-44-1666	Left Handle Half	(1)
17	06-72-1720	Nameplate Rivet	(2)
18	12-99-1750	Service Nameplate	(1)
★ 19	28-50-6220	Motor Housing	(1)
20	02-04-0845	Ball Bearing	(1)
★ 21	06-57-2975	8-32 Flexlock Hex Nut	(2)
★ 22	23-16-0456	Field Insulator	(1)
23	18-31-0200	120 V. Field	(1)
24	43-72-0175	Heat Sink Holder	(1)
25	31-05-0050	Baffle	(1)
26	16-30-0325	120 V. Armature	(1)
27	22-84-0531	Fan Assembly	(1)
28	02-04-0911	Ball Bearing	(1)
29	22-50-0042	Pin Housing Assy.	(1)
30	48-76-4008	Cord Set	(1)

FIG.	PART NO.	DESCRIPTION OF PART	NO. REQ.
31	48-66-3280	Chuck Key	(1)
32	48-66-4040	Key Holder	(1)
33	28-28-0601	Diaphragm	(1)
34	02-50-1640	Needle Bearing	(1)
36	06-42-0800	Woodruff Key	(1)
39	02-50-2440	Needle Bearing	(1)
40	32-75-1601	Spindle Gear	(1)
41	34-60-1200	Retaining Ring	(1)
42	32-40-1241	Spindle Gear	(1)
43	36-66-2002	Intermediate Shaft	(1)
44	02-04-0640	Ball Bearing	(1)
45	28-14-1910	Gear Case	(1)
46	43-62-0875	Side Handle	(1)
47	02-04-1536	Ball Bearing	(1)
48	34-80-2500	Retaining Ring	(1)
★ 49	06-82-5502	8-32 x 2-1/4" Pan Hd. Taptite T-20	(2)
★ 50	06-82-5404	8-32 x 1-3/8" Pan Hd. Taptite T-20	(1)
51	06-42-1600	Woodruff Key	(1)
52	38-50-5470	Spindle	(1)
53	48-66-1360	1/2" Chuck	(1)
54	06-75-3150	1/4-20 x 1" L.H. Skt. Cap Screw	(1)
★ 55	31-55-0190	Coil Shield	(1)
56	45-12-0470	Dust Shield	(1)

LUBRICATION:

45 3-1/4 Oz. Type "A" Grease, No. 49-08-0800.



SERVICE PARTS LIST

BULLETIN NO.
54-08-1208

SPECIFY CATALOG NO. AND SERIAL NO. WHEN ORDERING PARTS		REVISED BULLETIN	DATE
1/2" REVERSING DRILL		54-08-1207	Jan. '95
CATALOG NO. 1007-1	STARTING SERIAL NO. 628B	WIRING INSTRUCTION 58-01-0298	

EXAMPLE:
Component Parts (Small #)
Are Included When Ordering
The Assembly (Large #).

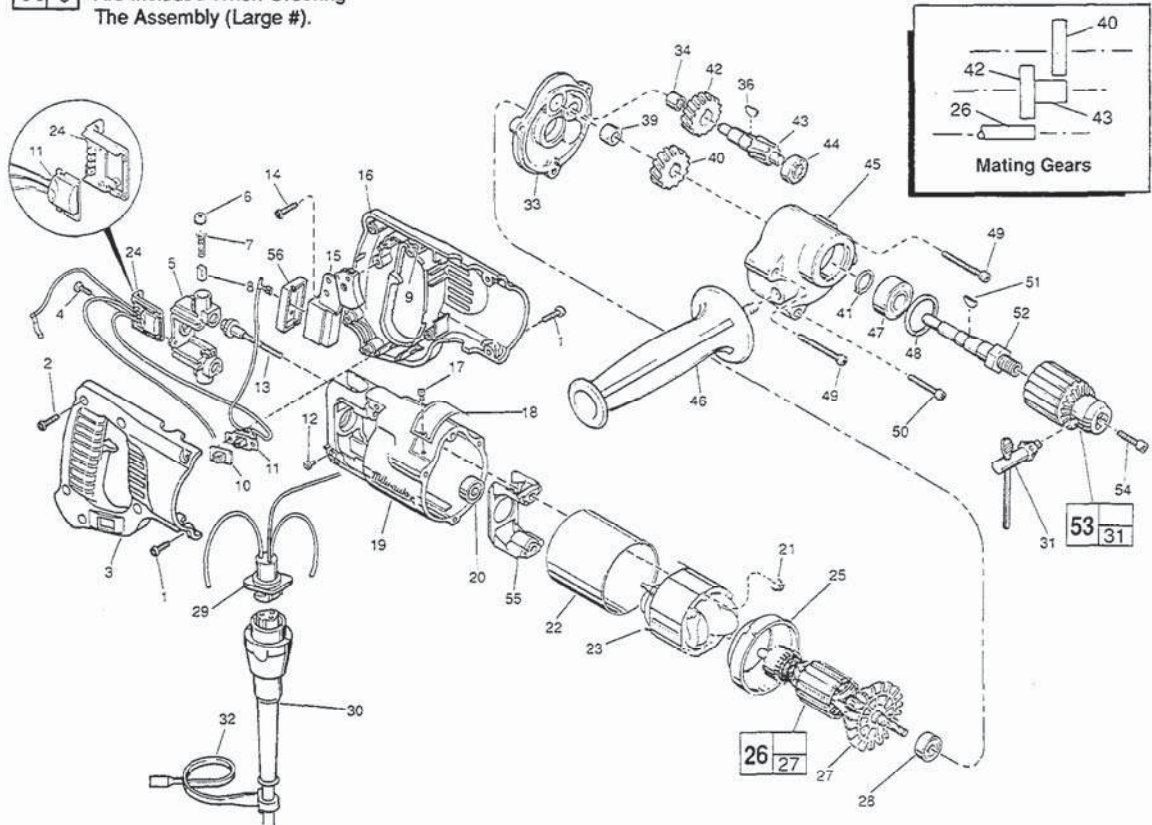


FIG.	PART NO.	DESCRIPTION OF PART	NO. REQ.
★	1	06-82-5316 8-32 x 1/2" Slit. Pan Hd. Taptite T-20	(4)
★	2	06-82-7270 8-16 x 5/8" Pan Hd. Plastite T-20	(5)
★	3	31-44-1661 Right Handle Half	(1)
★	4	06-95-0075 6-32 x 3/8" Truss Hd. Taptite T-10	(2)
★	5	22-22-1380 Brush Holder Assembly	(1)
★	6	23-44-0190 Brush Retaining Cap	(2)
★	7	23-52-0160 Brush Spring	(2)
★	8	22-16-0275 Carbon Brush	(2)
★	9	14-46-1001 Foam Slug Kit-10 Slugs	(1)
★	10	31-12-0196 Switch Cap	(1)
★	11	14-20-0357 Switch Assembly	(1)
★	12	06-95-5150 6-32 x 1/4" Hex Hd. Taptite Sems	(1)
★	13	06-81-1060 8-32 x 2-1/4" Field Bolt	(2)
★	14	06-82-7270 8-16 x 5/8" Pan Hd. Plastite T-20	(1)
★	15	23-66-1490 On-Off Switch	(1)
★	16	31-44-1666 Left Handle Half	(1)
★	17	06-72-1720 Nameplate Rivet	(2)
★	18	12-99-1750 Service Nameplate	(1)
★	19	28-50-6220 Motor Housing	(1)
★	20	02-04-0845 Ball Bearing	(1)
★	21	06-57-2975 8-32 Flexlock Hex Nut	(2)
★	22	23-16-0456 Field Insulator	(1)
★	23	18-31-0200 120 V. Field	(1)
★	24	43-72-0175 Heat Sink Holder	(1)
★	25	31-05-0050 Baffle	(1)
★	26	16-30-0325 120 V. Armature	(1)
★	27	22-84-0531 Fan Assembly	(1)
★	28	02-04-0911 Ball Bearing	(1)
★	29	22-56-0542 Pin Housing Assy.	(1)
★	30	48-76-4008 Cord Set	(1)

FIG.	PART NO.	DESCRIPTION OF PART	NO. REQ.
★	31	48-66-3280 Chuck Key	(1)
★	32	48-66-4040 Key Holder	(1)
★	33	28-28-0601 Diaphragm	(1)
★	34	02-50-1640 Needle Bearing	(1)
★	36	06-42-0800 Woodruff Key	(1)
★	39	02-50-2440 Needle Bearing	(1)
★	40	32-75-1601 Spindle Gear	(1)
★	41	34-60-1200 Retaining Ring	(1)
★	42	32-40-1241 Spindle Gear	(1)
★	43	36-66-2002 Intermediate Shaft	(1)
★	44	02-04-0640 Ball Bearing	(1)
★	45	28-14-1910 Gear Case	(1)
★	46	43-62-0875 Side Handle	(1)
★	47	02-04-1536 Ball Bearing	(1)
★	48	34-80-2500 Retaining Ring	(1)
★	49	06-82-5502 8-32 x 2-1/4" Pan Hd. Taptite T-20	(2)
★	50	06-82-5404 8-32 x 1-3/8" Pan Hd. Taptite T-20	(1)
★	51	06-42-1600 Woodruff Key	(1)
★	52	38-50-5470 Spindle	(1)
★	53	48-66-1360 1/2" Chuck	(1)
★	54	06-75-3150 1/4-20 x 1" L.H. Skt. Cap Screw	(1)
★	55	31-55-0190 Coil Shield	(1)
★	56	45-12-0470 Dust Shield	(1)

LUBRICATION:

45 3-1/4 Oz. Type "A" Grease, No. 49-08-0800.



SERVICE PARTS LIST

BULLETIN NO.
54-08-1209

SPECIFY CATALOG NO. AND SERIAL NO. WHEN ORDERING PARTS		REVISED BULLETIN	DATE
1/2" REVERSING DRILL		54-08-1208	Jan. 2013
CATALOG NO. 1007-1	STARTING SERIAL NO. 628C	WIRING INSTRUCTION 58-01-0298	
SEE BULLETIN NO. 54-08-1300 FOR NEXT REVISION			

EXAMPLE:
Component Parts (Small #) Are Included
When Ordering The Assembly (Large #).

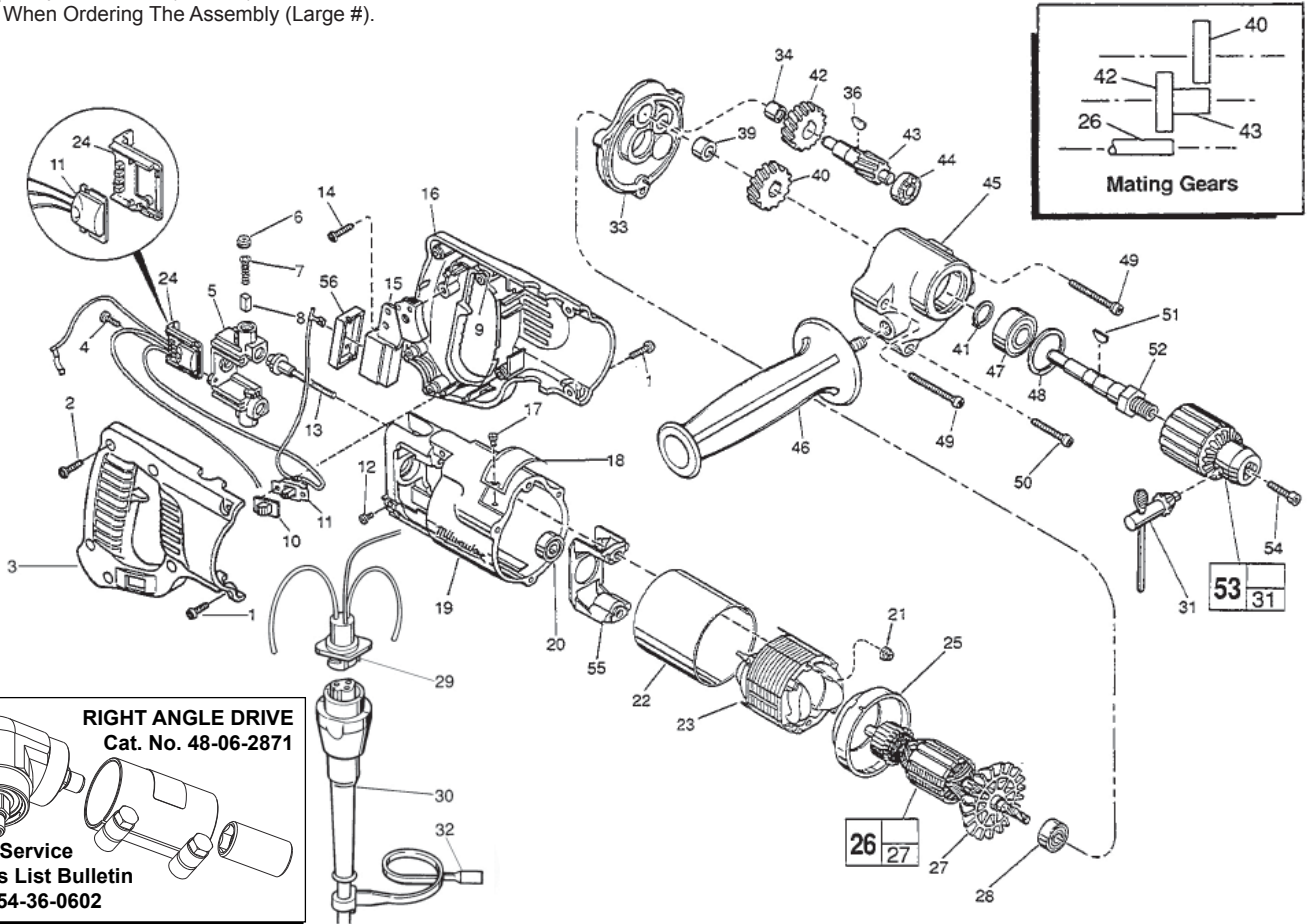


FIG.	PART NO.	DESCRIPTION OF PART	NO. REQ.
1	06-82-5316	8-32 x 1/2" Slit. Pan Hd. Taptite T-20	(4)
2	06-82-7270	8-16 x 5/8" Pan Hd. Plastite T-20	(5)
3	31-44-1661	Right Handle Half	(1)
4	06-95-0075	6-32 x 3/8" Truss Hd. Taptite T-10	(2)
5	22-22-1380	Brush Holder Assembly	(1)
6	23-44-0190	Brush Retaining Cap	(2)
7	23-52-0160	Brush Spring	(2)
8	22-16-0275	Carbon Brush	(2)
9	14-46-1001	Foam Slug Kit-10 Slugs	(1)
10	31-12-0196	Switch Cap	(1)
11	14-20-0357	Switch Assembly	(1)
12	06-95-5150	6-32 x 1/4" Hex Hd. Taptite Sems	(1)
13	06-81-1060	8-32 x 2-1/4" Field Bolt	(2)
14	06-82-7270	8-16 x 5/8" Pan Hd. Plastite T-20	(1)
15	23-66-1490	On-Off Switch	(1)
16	31-44-1666	Left Handle Half	(1)
17	06-72-1720	Nameplate Rivet	(2)
18	12-99-1750	Service Nameplate	(1)
19	28-50-6220	Motor Housing	(1)
20	02-04-0845	Ball Bearing	(1)
21	06-57-2975	8-32 Flexlock Hex Nut	(2)
22	23-16-0456	Field Insulator	(1)
23	18-31-0200	120 V. Field	(1)
24	43-72-0175	Heat Sink Holder	(1)
25	31-05-0050	Baffle	(1)
★ 26	16-30-0326	120 V. Armature	(1)
27	22-84-0531	Fan Assembly	(1)
28	02-04-0911	Ball Bearing	(1)
29	22-56-0542	Pin Housing Assy.	(1)
30	48-76-4008	Cord Set	(1)

FIG.	PART NO.	DESCRIPTION OF PART	NO. REQ.
31	48-66-3280	Chuck Key	(1)
32	48-66-4040	Key Holder	(1)
33	28-28-0601	Diaphragm	(1)
34	02-50-1640	Needle Bearing	(1)
36	06-42-0800	Woodruff Key	(1)
39	02-50-2440	Needle Bearing	(1)
★ 40	32-75-1606	Spindle Gear	(1)
41	34-60-1200	Retaining Ring	(1)
★ 42	32-40-1251	Intermediate Gear	(1)
★ 43	36-66-2012	Intermediate Shaft	(1)
★ 44	02-04-0725	Ball Bearing	(1)
★ 45	28-14-1921	Gear Case	(1)
46	43-62-0875	Side Handle	(1)
47	02-04-1536	Ball Bearing	(1)
48	34-80-2500	Retaining Ring	(1)
★ 49	06-82-5532	8-32 x 2-1/2" Pan Hd. Taptite T-20	(2)
★ 50	06-82-5432	8-32 x 1-5/8" Pan Hd. Taptite T-20	(1)
★ 51	06-42-2000	Woodruff Key	(1)
★ 52	38-50-5475	Spindle	(1)
53	48-66-1360	1/2" Chuck	(1)
54	06-75-3150	1/4-20 x 1" L.H. Skt. Cap Screw	(1)
55	31-55-0190	Coil Shield	(1)
56	45-12-0470	Dust Shield	(1)

LUBRICATION:

★ 45 3-3/4 Oz. Type "A" Grease, No. 49-08-0800.



SERVICE PARTS LIST

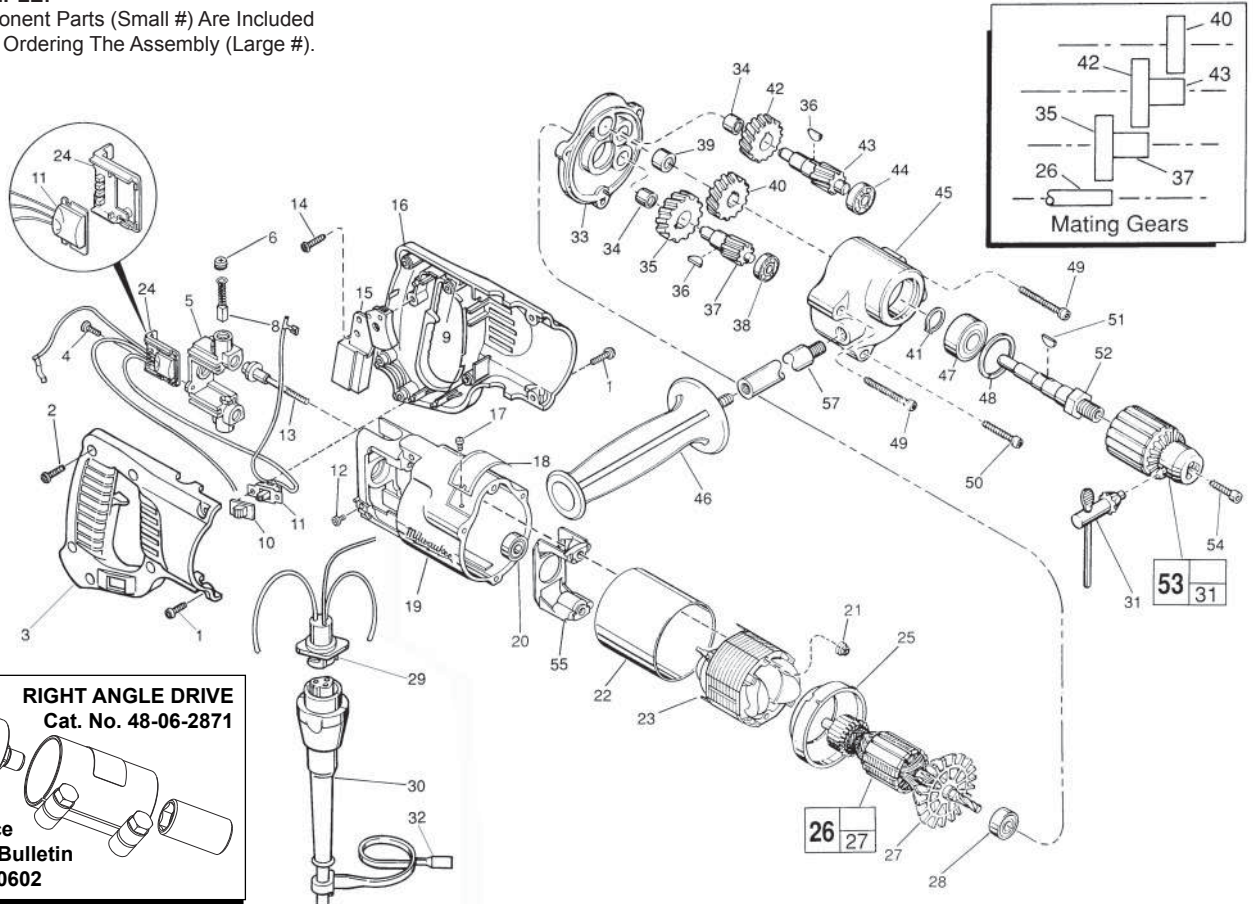
BULLETIN NO.
54-08-1300

SPECIFY CATALOG NO. AND SERIAL NO. WHEN ORDERING PARTS		REVISED BULLETIN	DATE
1/2" REVERSING DRILL		54-08-1209	Jan. 2013
CATALOG NO.	1007-1	WIRING INSTRUCTION	
STARTING SERIAL NO.	628D	58-01-0297	

EXAMPLE:

00	0
----	---

 Component Parts (Small #) Are Included When Ordering The Assembly (Large #).



RIGHT ANGLE DRIVE
Cat. No. 48-06-2871

See Service Parts List Bulletin No. 54-36-0602

FIG.	PART NO.	DESCRIPTION OF PART	NO. REQ.
1	06-82-5316	8-32 x 1/2" Slit. Pan Hd. Taptite T-20	(4)
2	06-82-7270	8-16 x 5/8" Pan Hd. Plastite T-20	(5)
3	31-44-1661	Right Handle Half	(1)
4	06-95-0075	6-32 x 3/8" Truss Hd. Taptite T-10	(2)
5	22-22-1380	Brush Holder Assembly	(1)
6	23-44-0190	Brush Retaining Cap	(2)
8	22-18-0910	Carbon Brush Assembly	(2)
9	14-46-1001	Foam Slug Kit-10 Slugs	(1)
10	31-12-0196	Switch Cap	(1)
★ 11	14-20-0367	Reverse Switch Assembly	(1)
12	06-95-5150	6-32 x 1/4" Hex Hd. Taptite Sems	(1)
13	06-81-1060	8-32 x 2-1/4" Field Bolt	(2)
14	06-82-7270	8-16 x 5/8" Pan Hd. Plastite T-20	(1)
15	23-66-1965	On-Off Switch	(1)
16	31-44-1666	Left Handle Half	(1)
17	06-72-1720	Nameplate Rivet	(2)
18	12-99-1750	Service Nameplate	(1)
19	28-50-6220	Motor Housing	(1)
20	02-04-0845	Ball Bearing	(1)
21	06-57-2975	8-32 Flexlock Hex Nut	(2)
22	23-16-0456	Field Insulator	(1)
23	18-31-0600	120 V. Field	(1)
24	43-72-0176	Heat Sink Holder	(1)
25	31-05-0055	Baffle	(1)
26	16-30-0226	120 V. Armature	(1)
27	22-84-0531	Fan Assembly	(1)
28	02-04-0911	Ball Bearing	(1)
★ 29	22-56-0840	Pin Housing Assy.	(1)
30	48-76-4008	Cord Set	(1)
31	48-66-3280	Chuck Key	(1)
32	48-66-4040	Key Holder	(1)
33	28-28-0611	Diaphragm	(1)

FIG.	PART NO.	DESCRIPTION OF PART	NO. REQ.
34	02-50-1640	Needle Bearing	(2)
35	32-40-1251	Intermediate Gear	(1)
36	06-42-0800	Woodruff Key	(2)
37	36-66-2811	Intermediate Shaft	(1)
38	02-04-0640	Ball Bearing	(1)
39	02-50-2440	Needle Bearing	(1)
40	32-75-2066	Spindle Gear	(1)
41	34-60-1200	Retaining Ring	(1)
42	32-75-2051	2nd Intermediate Gear	(1)
43	36-66-4012	2nd Intermediate Shaft	(1)
44	02-04-0820	Ball Bearing	(1)
45	28-14-1922	Gear Case	(1)
46	43-62-1265	Side Handle	(1)
47	02-04-1536	Ball Bearing	(1)
48	34-80-2500	Retaining Ring	(1)
49	06-82-5532	8-32 x 2-1/2" Pan Hd. Taptite T-20	(2)
50	06-82-5432	8-32 x 1-5/8" Pan Hd. Taptite T-20	(1)
51	06-42-2000	Woodruff Key	(1)
52	38-50-5475	Spindle	(1)
53	48-66-1360	1/2" Chuck	(1)
54	06-75-3150	1/4-20 x 1" L.H. Skt. Cap Screw	(1)
55	31-55-0190	Coil Shield	(1)
57	43-62-1170	Side Handle Extension	(1)

FIG. LUBRICATION:
45 3-3/4 Oz. Type "A" Grease, No. 49-08-0800.

FIG. NOTES:
46 Apply Red Loctite To Threads Of Side Handle.



SERVICE PARTS LIST

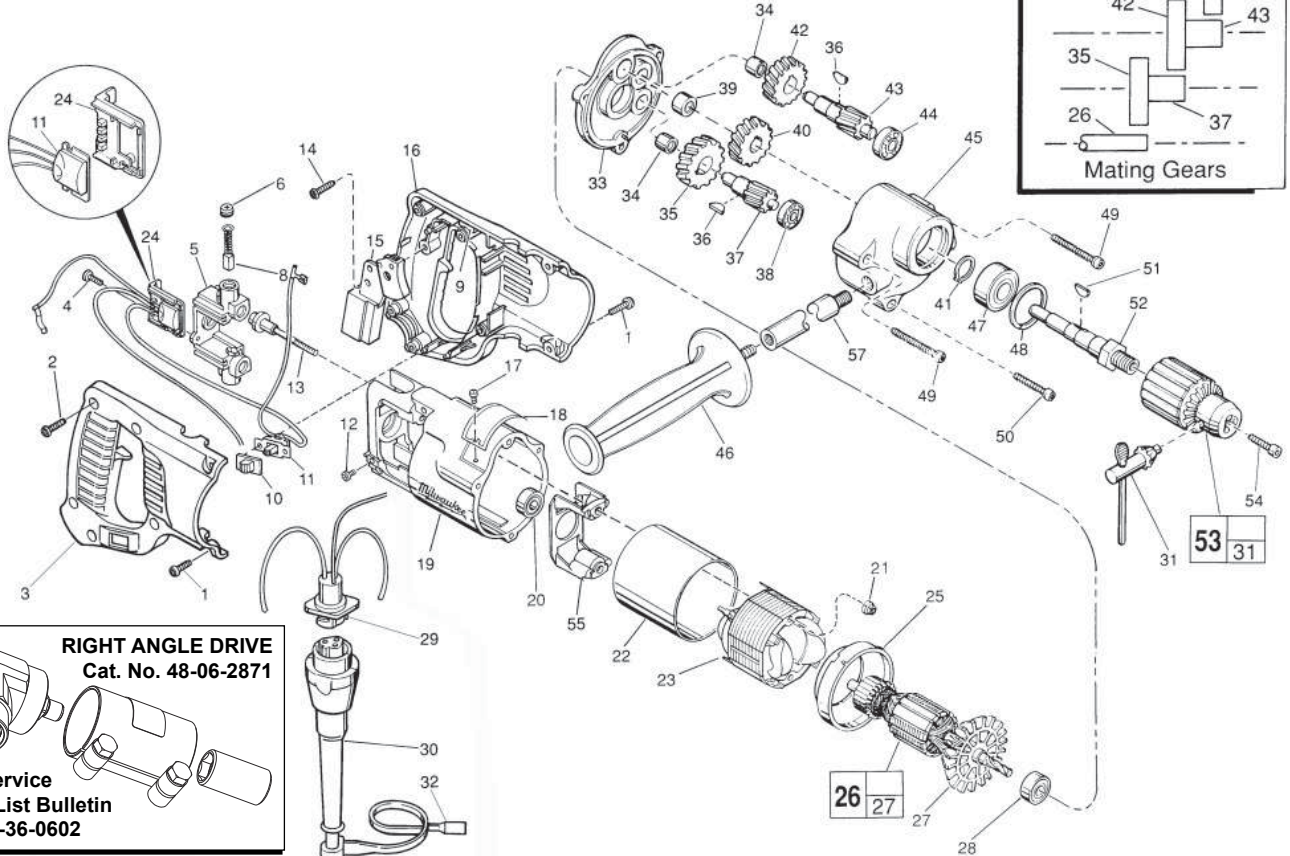
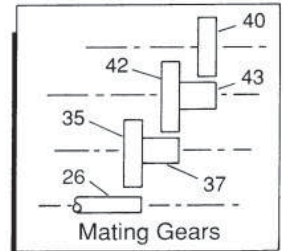
BULLETIN NO.
54-08-1301

SPECIFY CATALOG NO. AND SERIAL NO. WHEN ORDERING PARTS		REVISED BULLETIN	DATE
1/2" REVERSING DRILL		54-08-1300	Jan. 2013
CATALOG NO.	1007-1	WIRING INSTRUCTION	
STARTING SERIAL NO.	628E	58-01-0296	

EXAMPLE:

00	0
----	---

 Component Parts (Small #) Are Included When Ordering The Assembly (Large #).



RIGHT ANGLE DRIVE
Cat. No. 48-06-2871

See Service Parts List Bulletin No. 54-36-0602

FIG.	PART NO.	DESCRIPTION OF PART	NO. REQ.
1	06-82-5316	8-32 x 1/2" Slit. Pan Hd. Taptite T-20	(4)
2	06-82-7270	8-16 x 5/8" Pan Hd. Plastite T-20	(5)
3	31-44-1661	Right Handle Half	(1)
4	06-95-0075	6-32 x 3/8" Truss Hd. Taptite T-10	(2)
5	22-22-1380	Brush Holder Assembly	(1)
6	23-44-0190	Brush Retaining Cap	(2)
8	22-18-0910	Carbon Brush Assembly	(2)
9	14-46-1001	Foam Slug Kit-10 Slugs	(1)
10	31-12-0196	Switch Cap	(1)
★ 11	14-20-0377	Remote Switch Assembly	(1)
12	06-95-5150	6-32 x 1/4" Hex Hd. Taptite Sems	(1)
13	06-81-1060	8-32 x 2-1/4" Field Bolt	(2)
14	06-82-7270	8-16 x 5/8" Pan Hd. Plastite T-20	(1)
★ 15	23-66-0205	Switch	(1)
16	31-44-1666	Left Handle Half	(1)
17	06-72-1720	Nameplate Rivet	(2)
18	12-99-1750	Service Nameplate	(1)
19	28-50-6220	Motor Housing	(1)
20	02-04-0845	Ball Bearing	(1)
21	06-57-2975	8-32 Flexlock Hex Nut	(2)
22	23-16-0456	Field Insulator	(1)
23	18-31-0600	120 V. Field	(1)
24	43-72-0176	Heat Sink Holder	(1)
25	31-05-0055	Baffle	(1)
26	16-30-0226	120 V. Armature	(1)
27	22-84-0531	Fan Assembly	(1)
28	02-04-0911	Ball Bearing	(1)
★ 29	22-56-0815	Pin Housing Assy.	(1)
30	48-76-4008	Cord Set	(1)
31	48-66-3280	Chuck Key	(1)
32	48-66-4040	Key Holder	(1)
33	28-28-0611	Diaphragm	(1)

FIG.	PART NO.	DESCRIPTION OF PART	NO. REQ.
34	02-50-1640	Needle Bearing	(2)
35	32-40-1251	Intermediate Gear	(1)
36	06-42-0800	Woodruff Key	(2)
37	36-66-2811	Intermediate Shaft	(1)
38	02-04-0640	Ball Bearing	(1)
39	02-50-2440	Needle Bearing	(1)
40	32-75-2066	Spindle Gear	(1)
41	34-60-1200	Retaining Ring	(1)
42	32-75-2051	2nd Intermediate Gear	(1)
43	36-66-4012	2nd Intermediate Shaft	(1)
44	02-04-0820	Ball Bearing	(1)
45	28-14-1922	Gear Case	(1)
46	43-62-1265	Side Handle	(1)
47	02-04-1536	Ball Bearing	(1)
48	34-80-2500	Retaining Ring	(1)
49	06-82-5532	8-32 x 2-1/2" Pan Hd. Taptite T-20	(2)
50	06-82-5432	8-32 x 1-5/8" Pan Hd. Taptite T-20	(1)
51	06-42-2000	Woodruff Key	(1)
52	38-50-5475	Spindle	(1)
53	48-66-1360	1/2" Chuck	(1)
54	06-75-3150	1/4-20 x 1" L.H. Skt. Cap Screw	(1)
55	31-55-0190	Coil Shield	(1)
57	43-62-1170	Side Handle Extension	(1)

FIG. LUBRICATION:

45 3-3/4 Oz. Type "A" Grease, No. 49-08-0800.

FIG. NOTES:

46 Apply Red Loctite To Threads Of Side Handle.



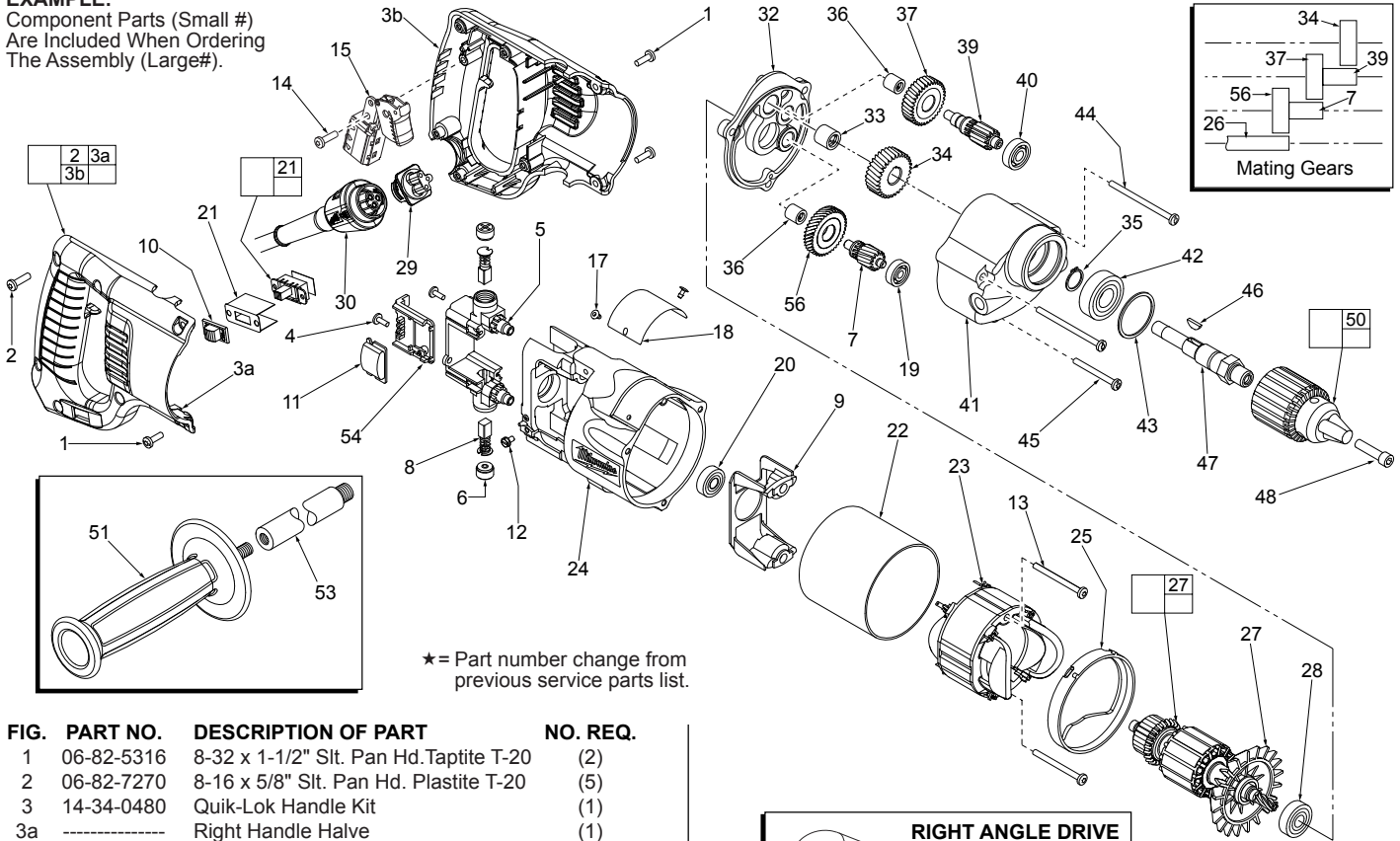
SERVICE PARTS LIST

BULLETIN NO.
54-08-1302

SPECIFY CATALOG NO. AND SERIAL NO. WHEN ORDERING PARTS		REVISED BULLETIN 54-08-1301	DATE Jan. 2013
1/2" REVERSING DRILL with Quik-Lok Cord		WIRING INSTRUCTION 58-01-0296	
CATALOG NO. 1007-1	STARTING SERIAL NO. 628F		

00/0

EXAMPLE:
Component Parts (Small #)
Are Included When Ordering
The Assembly (Large#).



* = Part number change from previous service parts list.

FIG.	PART NO.	DESCRIPTION OF PART	NO. REQ.
1	06-82-5316	8-32 x 1-1/2" Slit. Pan Hd. Taptite T-20	(2)
2	06-82-7270	8-16 x 5/8" Slit. Pan Hd. Plastite T-20	(5)
3	14-34-0480	Quik-Lok Handle Kit	(1)
3a	-----	Right Handle Halve	(1)
3b	-----	Left Handle Halve	(1)
4	06-95-0075	6-32 x 3/8" Truss Hd. Taptite	(2)
★ 5	22-22-1381	Brush Holder Assembly	(1)
6	23-44-0190	Brush Retaining Cap	(2)
★ 7	36-66-2812	Intermediate Shaft	(1)
8	22-18-0910	Carbon Brush Assembly	(2)
9	31-55-0190	Coil Shield	(1)
10	31-12-0196	Switch Cap	(1)
★ 11	14-20-0385	Remote Switch Assembly	(1)
12	06-95-5150	6-32 x 1/4" Hex Hd. Taptite Sems	(1)
★ 13	06-82-7380	7-18 x 1-7/8" Pan Hd. Taptite T-20	(2)
14	06-82-7270	8-16 x 5/8" Slit. Pan Hd. Plastite T-20	(1)
15	23-66-0205	Switch	(1)
17	06-72-1700	Nameplate Rivet	(2)
18	12-99-1750	Service Nameplate	(1)
19	02-04-0640	Ball Bearing	(1)
20	02-04-0845	Ball Bearing	(1)
21	-----	Paper Insulator	(1)
22	23-16-0456	Field Insulator	(1)
23	18-31-0600	120 Volt Field - Auto Assembly	(1)
★ 24	28-50-6222	Motor Housing	(1)
25	31-05-0055	Baffle	(1)
26	16-30-0226	120 Volt Armature	(1)
27	22-84-0531	Fan Assembly	(1)
28	02-04-0911	Ball Bearing	(1)
29	22-56-0815	Pin Housing Assembly	(1)
30	48-76-4008	Quik-Lok Cord Set	(1)
31	48-66-4040	Key Holder (Not Shown))	(1)
32	28-28-0611	Diaphragm	(1)
33	02-50-2440	Needle Bearing	(1)
34	32-75-2066	Spindle Gear	(1)
35	34-60-1200	Retaining Ring	(1)
36	02-50-1640	Needle Bearing	(2)
★ 37	32-75-2052	2nd Intermediate Gear	(1)

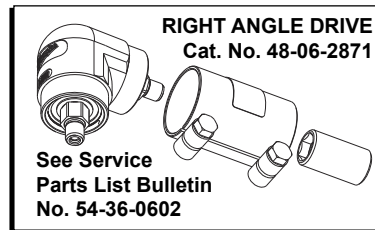


FIG.	PART NO.	DESCRIPTION OF PART	NO. REQ.
★ 39	36-66-4013	2nd Intermediate Shaft	(1)
40	02-04-0820	Ball Bearing	(1)
41	28-14-1922	Gear Case	(1)
42	02-04-1536	Ball Bearing	(1)
43	34-80-2500	Retaining Ring	(1)
44	06-82-5532	8-32 x 2-1/2" Slit. Pan Hd. Taptite T-20	(2)
45	06-82-5432	8-32 x 1-5/8" Slit. Pan Hd. Taptite T-20	(1)
46	06-42-2000	Woodruff Key	(1)
47	38-50-5475	Spindle	(1)
48	06-75-3150	1/4-20 x 1" L.H. Skt. Cap Screw	(1)
★ 49	48-66-1355	1/2" Chuck	(1)
50	48-66-3280	Chuck Key (Not Shown)	(1)
51	43-62-1265	Side Handle	(1)
53	43-62-1170	Side Handle Extension	(1)
54	43-72-0176	Heat Sink Holder	(1)
★ 56	32-40-1252	Intermediate Gear	(1)

FIG. LUBRICATION

41 3-3/4 Oz. Type "A" Grease, 49-08-0800.

FIG. NOTES:

51 Apply Red Loctite To Threads Of Side Handle.