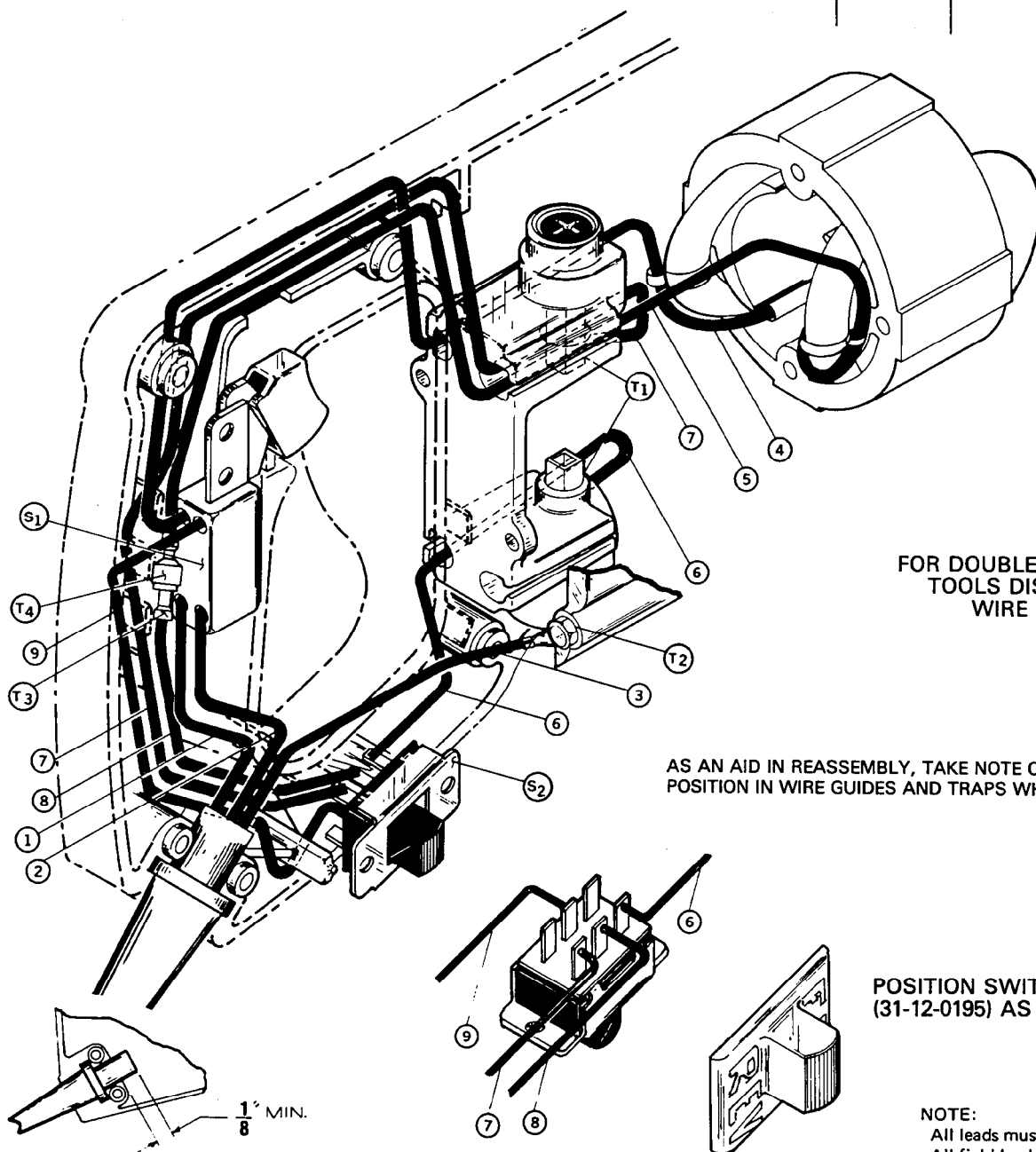


WIRING INSTRUCTIONS

TITLE DOUBLE REDUCTION REVERSING "D" HANDLE TOOLS

**BULLETIN
58-01-0212**



**FOR DOUBLE INSULATED
TOOLS DISREGARD
WIRE NO. 3**

AS AN AID IN REASSEMBLY, TAKE NOTE OF WIRE ROUTING AND POSITION IN WIRE GUIDES AND TRAPS WHILE DISMANTLING TOOL.

**POSITION SWITCH CAP
(31-12-0195) AS SHOWN**

NOTE:
All leads must be held to $\pm 1/8"$.
All field leads to be measured from and perpendicular to laminations.
All lead lengths are before stripping.

WIRING SPECIFICATIONS				
Wire No.	Wire Color	Origin or Gauge	Length	Terminals, Connectors and 1 or 2 End Wire Preparation
1	BLACK	CORD	2-11/16"	STRIP 3/8" AND TIN.
2	WHITE	CORD	2-11/16"	STRIP 3/8" AND TIN.
3	GREEN	CORD	4-1/2"	STRIP 3/16" FOR T2.
4	RED	FIELD	8-1/2"	STRIP 3/8" AND TIN.
5	BROWN	FIELD	8-1/2"	STRIP 3/16" FOR T4.
6	WHITE	—	—	COMPONENT OF SWITCH ASSEMBLY S2.
7	YELLOW	—	—	COMPONENT OF SWITCH ASSEMBLY S2.
8	WHITE	—	—	COMPONENT OF SWITCH ASSEMBLY S2.
9	YELLOW	—	—	COMPONENT OF SWITCH ASSEMBLY S2.

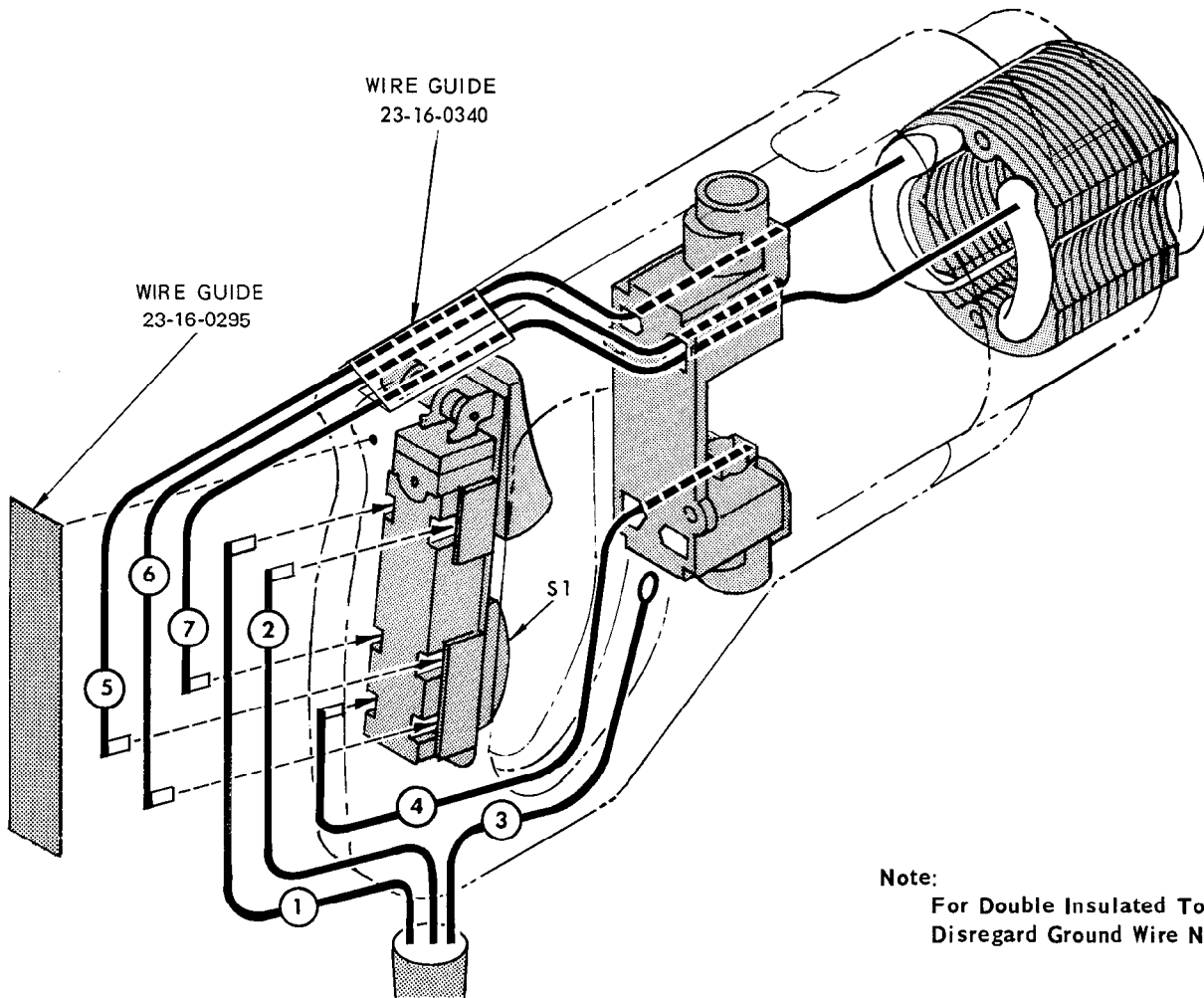
TERMINAL DESCRIPTION		
Code	Part No.	Qty.
T1	22-44-0090	2
T2	23-74-0896	1
T3	23-74-0430	1
T4	23-74-0440	1

CONNECTOR DESCRIPTION		
Code	Part No.	Qty.
S1	23-66-0167	1
S2	23-66-1453	1

WIRING INSTRUCTIONS

TITLE REVERSING "D" HANDLE TOOLS

BULLETIN
58-01-0216



Note:
For Double Insulated Tools
Disregard Ground Wire No.3

NOTE:
ALL LEADS MUST BE HELD TO ± 1/8"
ALL FIELD LEADS TO BE MEASURED FROM
AND PERPENDICULAR TO LAMINATIONS.
ALL LEAD LENGTHS ARE BEFORE STRIPPING.

WHERE TERMINAL AND CONNECTOR COMBINATIONS ARE SPECIFIED, SEE ELECTRICAL PARTS CHART
FOR PART NO. AND QUANTITY AND DRAWING FOR ACTUAL HOOK-UP

WIRING SPECIFICATIONS

Wire Color	Wire No.	Ga.	Lgth. in.	Terminal				Connector		Wire Color	Wire No.	Qty.	Lgth.	Terminal				Connector					
				T1	T2	T3	T4	C1	C2					C3	C4	T1	T2	T3	T4	C1	C2	C3	C4
Black	1	Cord	3-7/8	X																			
White	2	Cord	3-7/8	X																			
Green	3	Cord	4-1/2		X																		
Black	4	18	7-5/8	XX																			
Red	5	Field	9	X																			
White	6	18	9-1/8	XX																			
Brown	7	Field	8-7/8	X																			

Electrical Parts		
TERMINAL DESCRIPTION		
Code	Part No.	Qty.
T1	22-44-0090	8
T2	23-74-0390	1
CONNECTOR DESCRIPTION		
Code	Part No.	Qty.
SWITCH DESCRIPTION		
Code	Part No.	Qty.
S1	23-66-0751	1

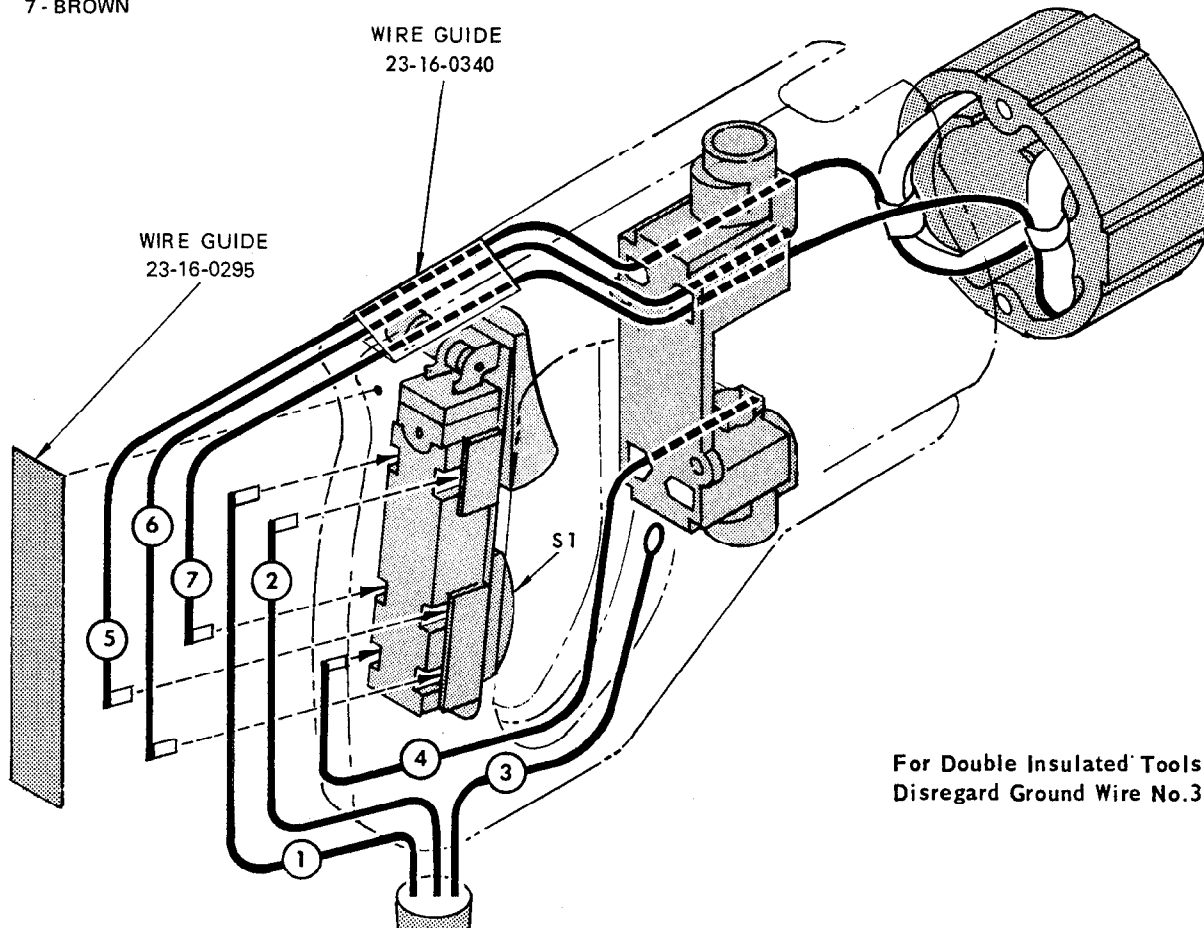
WIRING INSTRUCTIONS

TITLE

REVERSING "D" HANDLE TOOLS

**BULLETIN
58-01-0218**

* ON SOME TOOLS WIRE NOS. 5 THRU 7
ARE AS FOLLOWS:
5 - RED
6 - WHITE
7 - BROWN



For Double Insulated Tools
Disregard Ground Wire No.3

Refer to electrical parts chart for terminal and connector part nos.
and quantity required – see drawing for actual hook-up.

NOTE:

All leads must be held to $\pm 1/8"$.
All field leads to be measured from
and perpendicular to laminations.
All lead lengths are before stripping.

WIRING SPECIFICATIONS

Wire No.	Wire Color	Origin or Gauge	Length	Terminal				Connector				
				T1	T2	T3	T4	C1	C2	C3	C4	
1	BLACK	CORD	3-7/8	X								
2	WHITE	CORD	3-7/8	X								
3	GREEN	CORD	4-1/2		X							
4	BLACK	18	7-5/8	XX								
5	WHITE*	FIELD	9-3/8	X								
6	YELLOW*	18	9-1/8	XX								
7	WHITE*	FIELD	9-3/8	X								

ELECTRICAL PARTS

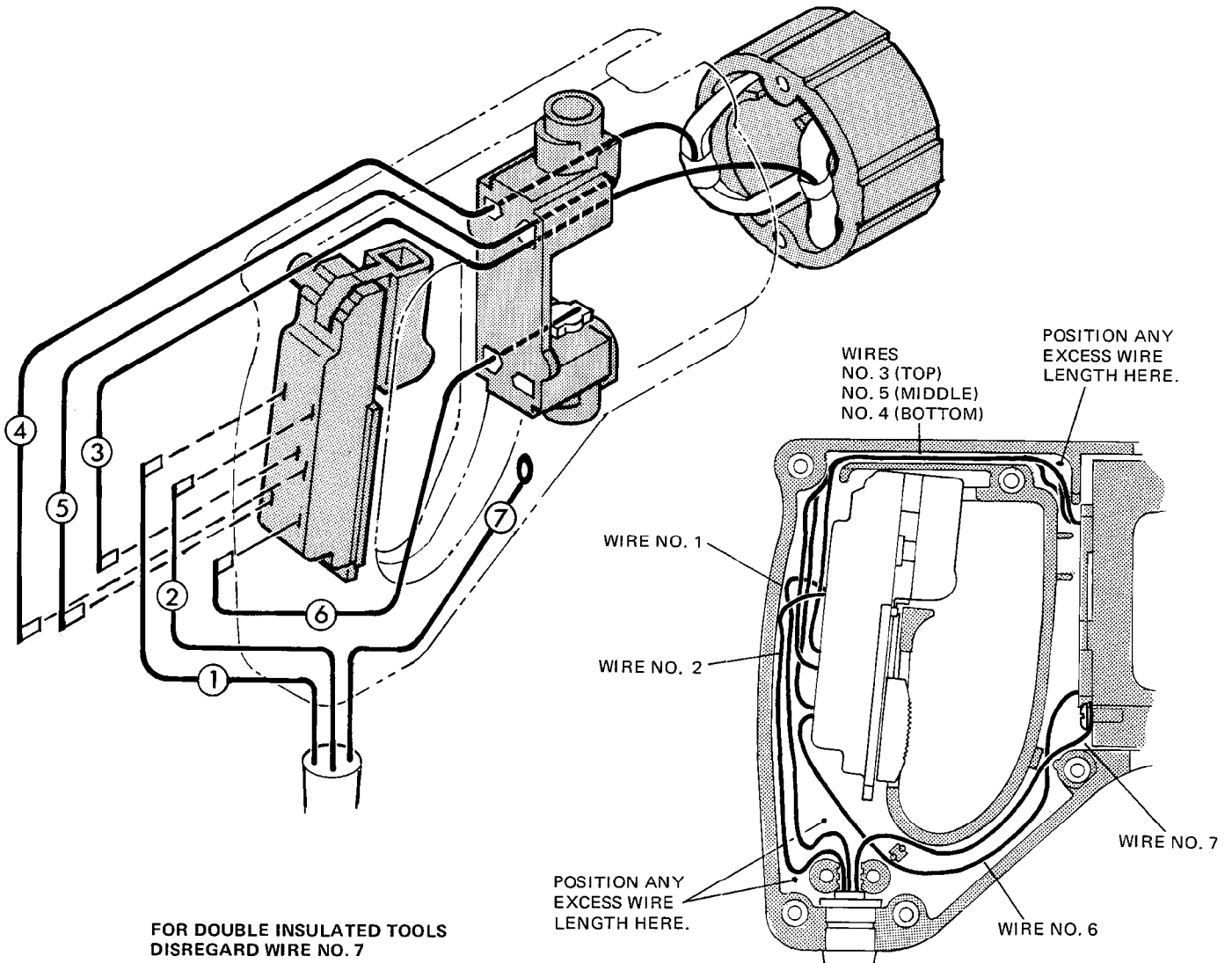
TERMINAL DESCRIPTION		
Code	Part No.	Qty.
T1	22-44-0090	8
T2	23-74-0390	1
CONNECTOR DESCRIPTION		
Code	Part No.	Qty.
SWITCH DESCRIPTION		
Code	Part No.	Qty.
S1	23-66-0751	1

WIRING INSTRUCTIONS

TITLE DOUBLE REDUCTION REVERSING "D" HANDLE TOOLS

BULLETIN
58-01-0244

DATE



**FOR DOUBLE INSULATED TOOLS
DISREGARD WIRE NO. 7**

WIRING SPECIFICATIONS

Wire No.	Wire Color	Origin or Gauge	Length	Terminals, Connectors and 1 or 2 End Wire Preparation.
1	Black	Cord	4-3/4"	Strip 1/4" for T1
2	White	Cord	4-3/4"	Strip 1/4" for T1
3	Brown	Field	9"	Strip 1/4" for T1
4	Red	Field	9"	Strip 1/4" for T1
5	Yellow	18	9"	Strip 1/4" for T1/Strip 1/4" for T1
6	White	18	8-3/4"	Strip 1/4" for T1/Strip 1/4" for T1
7	Green	Cord	4-3/4"	Strip 3/16" for T2

NOTE:
All leads must be held to $\pm 1/8"$.
All field leads to be measured from and perpendicular to laminations.
All lead lengths are before stripping.

TERMINAL DESCRIPTION		
Code	Part No.	Qty.
T1	22-44-0090	8
T2	23-74-0390	1

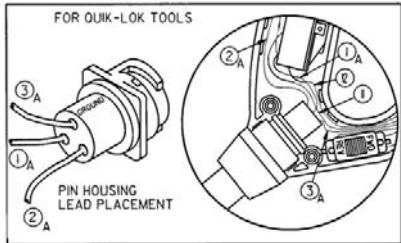
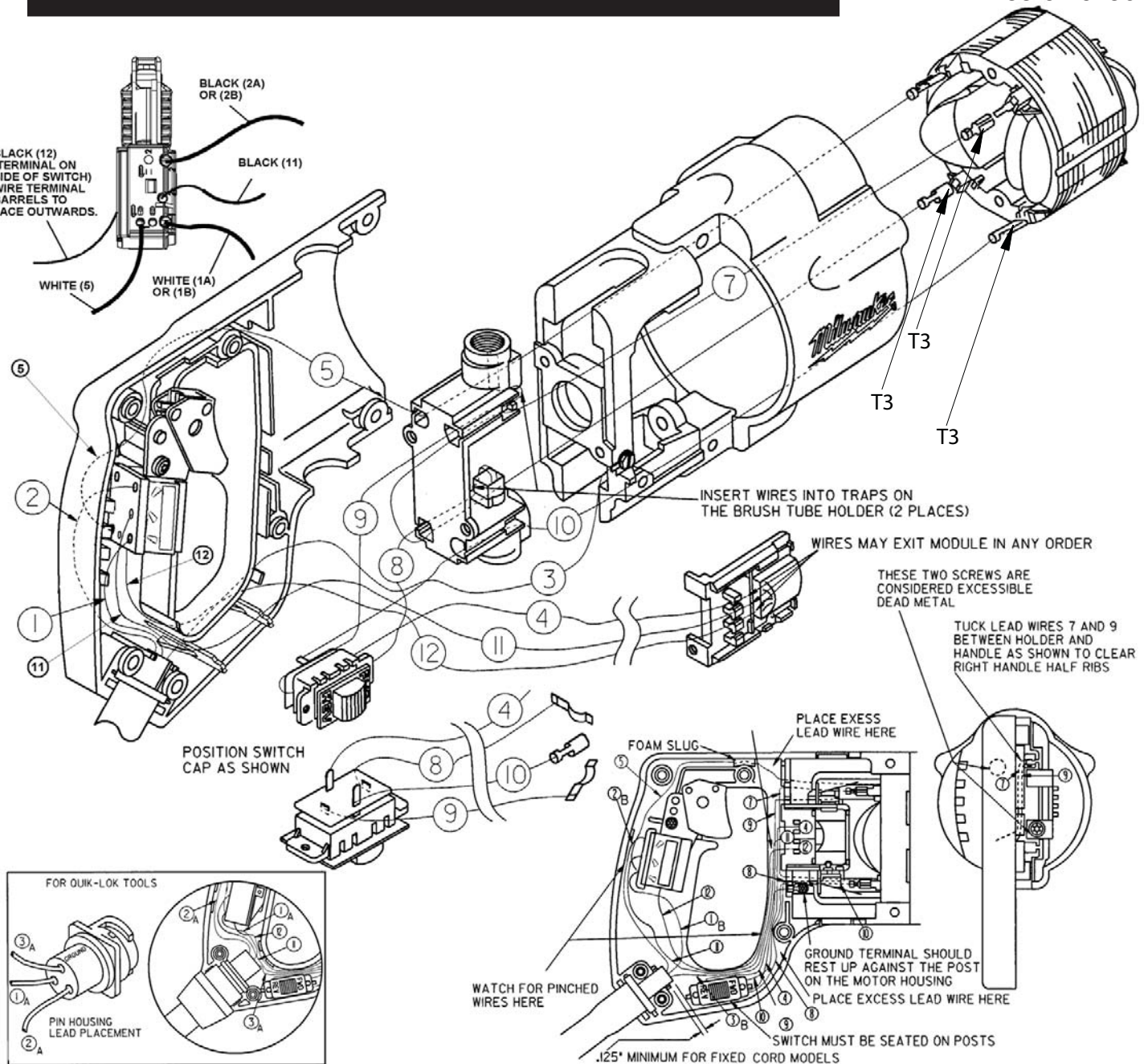
CONNECTOR DESCRIPTION		
Code	Part No.	Qty.

WIRING INSTRUCTIONS

TITLE

D-HANDLE TOOLS

BULLETIN
58-01-0296



WIRING SPECIFICATIONS

Wire No.	Wire Color	Origin or Part No.	Length	Terminals, Connectors and End Wire Preparation
1A	White	Quik-Lok Cord	--	Part of Pin Housing Assembly
2A	Black	Quik-Lok Cord	--	Part of Pin Housing Assembly
3A	Green	Quik-Lok Cord	--	Part of Pin Housing Assembly
1B	White	Cord	3.25	Strip .320 and Tin
2B	Black	Cord	3.75	Strip .320 and Tin
3B	Green	Cord	6.10	Strip .150 and Crimp, Crimp HT .006 ± .003
4	Black	--	--	Part of Remote Switch Assembly
5	White	--	--	Lead Assembly L4
7	Yellow	--	--	Lead Assembly L6
8	Black	--	--	Part of Remote Switch Assembly
9	Black	--	--	Part of Remote Switch Assembly
10	Brown	--	--	Part of Remote Switch Assembly
11	Black	--	--	Part of Remote Switch Assembly
12	Black	--	--	Part of Remote Switch Assembly

NOTE:
All leads must be held to ± 1/8".
All lead lengths are before stripping.

TERMINAL DESCRIPTION		
Code	Part No.	Qty.
T1	23-74-0896	1
T2	23-74-0410	2
T3	23-74-1060	4
T4	23-74-0900	1

WIRING INSTRUCTIONS

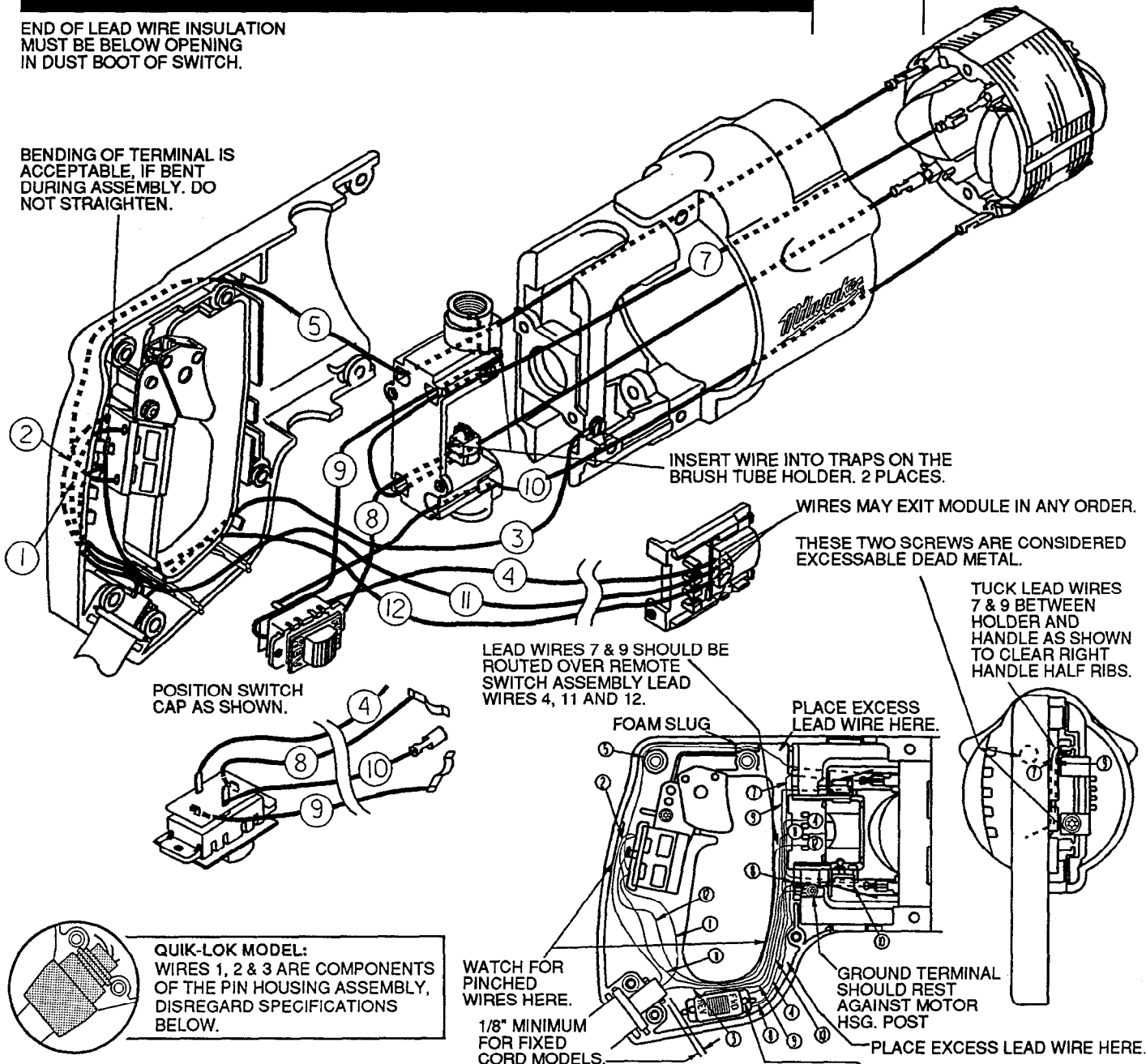
TITLE

D-HANDLE TOOLS

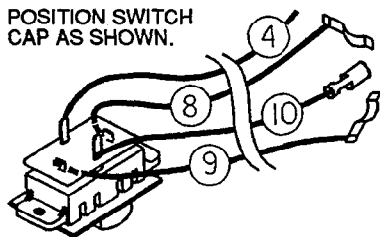
BULLETIN
58-01-0297

END OF LEAD WIRE INSULATION
MUST BE BELOW OPENING
IN DUST BOOT OF SWITCH.

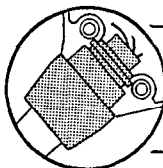
BENDING OF TERMINAL IS
ACCEPTABLE, IF BENT
DURING ASSEMBLY. DO
NOT STRAIGHTEN.



POSITION SWITCH
CAP AS SHOWN.



QUIK-LOK MODEL:
WIRES 1, 2 & 3 ARE COMPONENTS
OF THE PIN HOUSING ASSEMBLY,
DISREGARD SPECIFICATIONS
BELOW.



WIRING SPECIFICATIONS

Wire No.	Wire Color	Origin or Part No.	Gauge	Length	Terminals, Connectors and End Wire Preparation
1	White	Cord	18	3-3/4"	Strip 3/8" and tin.
2	Black	Cord	18	3-3/4"	Strip 3/8" and tin.
3	Green	Cord	18	5-1/2"	Strip 3/16" for T1.
4	Black	Remote Assy.	18	5-7/8"	Strip 3/16" and tin.
5	White	23-94-6115	18	8"	Strip 3/16" for T3 / Strip 3/8" tin.
7	Yellow	23-94-6110	18	5-5/16"	Strip both ends 3/16" for T3.
8	Black	Remote Assy.	18	5-1/4"	Strip 1/4" for T2.
9	Black	Remote Assy.	18	7-1/4"	Strip 1/4" for T2.
10	Brown	Remote Assy.	18	5-1/4"	Strip 3/16" for T3.
11	Black	Remote Assy.	18	9-7/16"	Strip 5/16" and tin.
12	Black	Remote Assy.	18	10-3/32"	Strip 3/16" for T4.

BULK LEAD WIRE - BULLETIN 58-01-0003

NOTE:
All leads must be held to $\pm 1/8"$.
All lead lengths are before stripping.

TERMINAL DESCRIPTION

Code	Part No.	Qty.
T1	23-74-0896	1
T2	23-74-0410	2
T3	23-74-1060	4
T4	23-74-0900	1

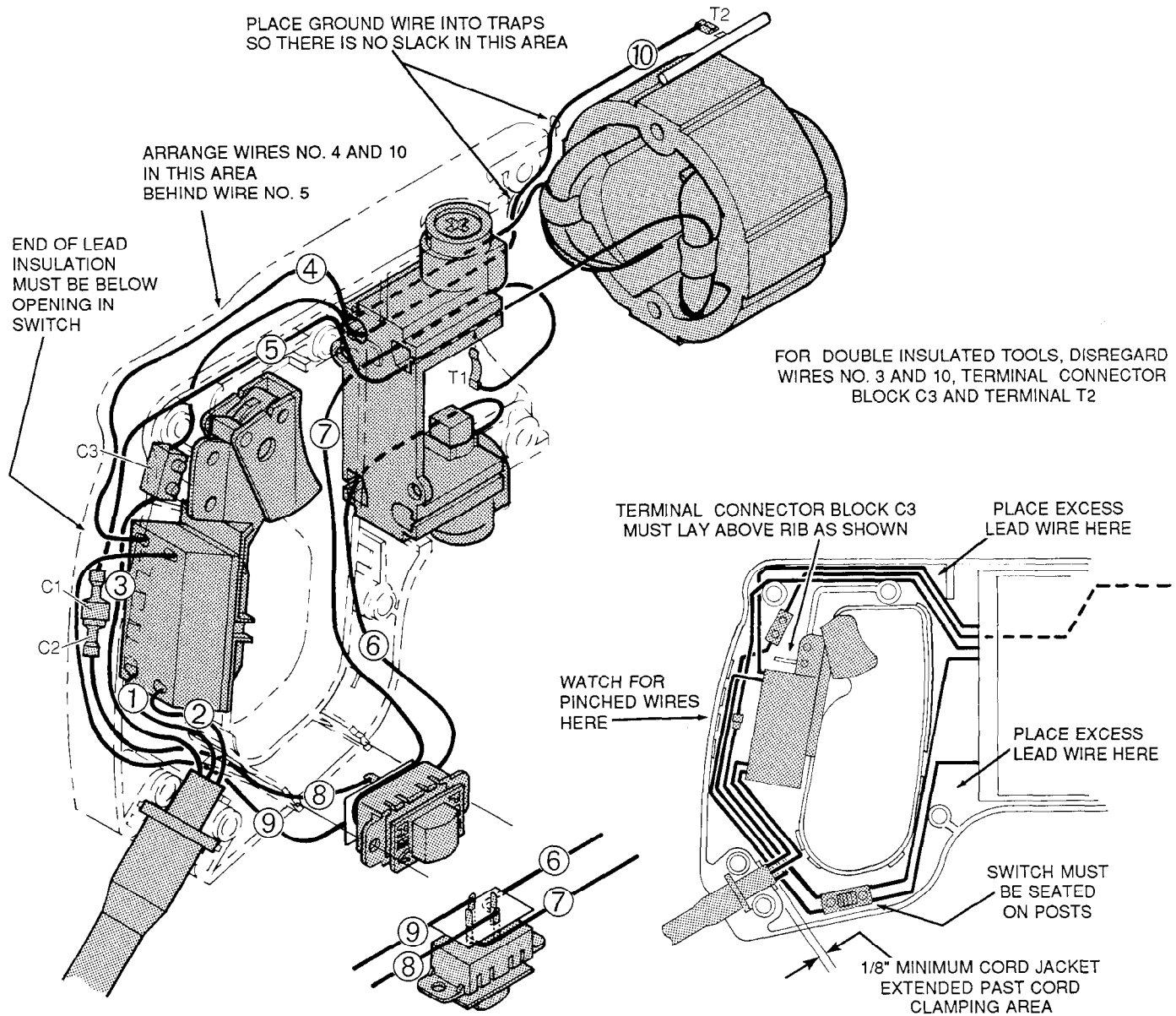
WIRING INSTRUCTIONS

TITLE

DOUBLE REDUCTION D-HANDLE TOOLS

BULLETIN

58-01-0770



WIRING SPECIFICATIONS

Wire No.	Wire Color	Origin or Gauge	Length	Terminals, Connectors and 1 or 2 End Wire Preparation
1	Black	Cord	2-11/16"	Strip 3/8" and Tin
2	White	Cord	2-11/16"	Strip 3/8" and Tin
3	Green	Cord	4-1/2"	Strip 3/16" and Tin for C3
4	Red	Field	8-1/2"	Strip 3/8" and Tin
5	Brown	Field	8-1/2"	Strip 3/16" for C1
6	Black	18 Ga.*	5-1/4"	Strip 1/4" for T1
7	Black	18 Ga.*	7-1/4"	Strip 1/4" for T1
8	Black	18 Ga.*	3-1/8"	Strip 3/16" for C2
9	Black	18 Ga.*	5-1/4"	Strip 3/8" and Tin
10	Green	20 Ga.	8-3/4"	Strip 3/16" for T2 / Strip 3/16" and Tin for C3

* Component of Switch Assembly

NOTE:

All leads must be held to $\pm 1/8"$.
 All field leads to be measured from and perpendicular to laminations.
 All lead lengths are before stripping.

TERMINAL DESCRIPTION		
Code	Part No.	Qty.
T1	22-44-0090	2
T2	23-74-0615	1

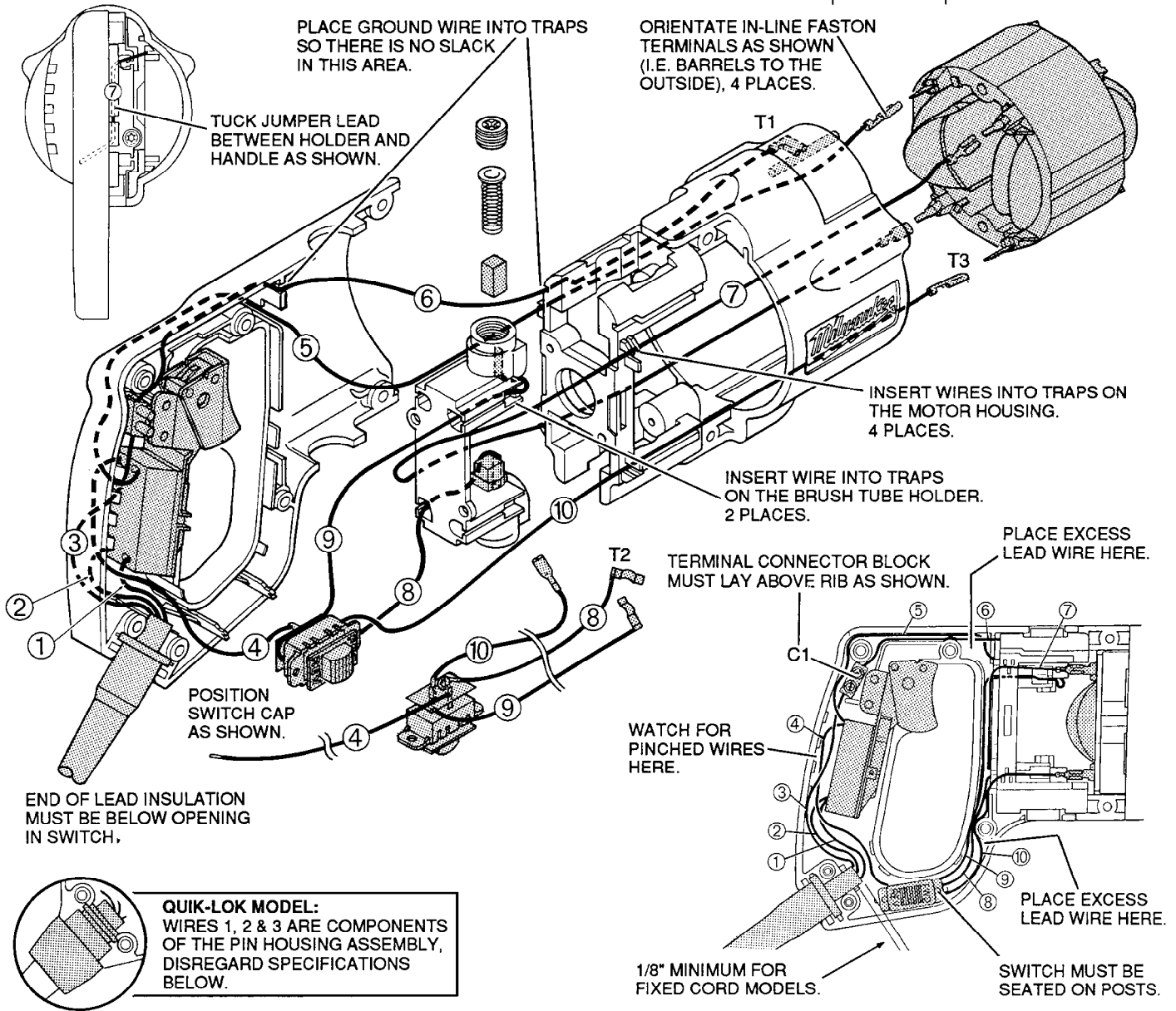
CONNECTOR DESCRIPTION		
Code	Part No.	Qty.
C1	23-74-0440	1
C2	23-74-0430	1
C3	22-56-0456	1

WIRING INSTRUCTIONS

TITLE

D-HANDLE TOOLS

BULLETIN
58-01-0771



WIRING SPECIFICATIONS

Wire No.	Wire Color	Origin or Part No.	Gauge	Length	Terminals, Connectors and End Wire Preparation
1	White	Cord	18	2-11/16"	Strip 3/8" and tin.
2	Black	Cord	18	2-11/16"	Strip 3/8" and tin.
▲3	Green	Cord	18	4-1/2"	Strip 3/16" and tin for C1.
4	Black	Switch Assy.	18	5-1/4"	Strip 3/8" and tin.
5	White	23-94-6175	18	8"	Strip 3/16" for T3 / Strip 3/8" tin.
▲6	Green	23-94-6100	16	8-3/4"	Strip 3/16" for T1 / Strip 3/16 and tin for C1.
7	Yellow	23-94-6110	18	5-5/16"	Strip both ends 3/16" for T3.
8	Black	Switch Assy.	18	5-1/4"	Strip 1/4" for T2.
9	Black	Switch Assy.	18	7-1/4"	Strip 1/4" for T2.
10	Red	Switch Assy.	18	5-1/4"	Strip 3/16" for T3.

BULK LEAD WIRE - BULLETIN 58-01-0003

▲ FOR DOUBLE INSULATED, DISREGARD WIRES AND TERMINALS

NOTE:
All leads must be held to $\pm 1/8"$.
All lead lengths are before stripping.

TERMINAL DESCRIPTION

Code	Part No.	Qty.
▲T1	23-74-0605	1
T2	23-74-0410	2
T3	23-74-1060	4

CONNECTOR DESCRIPTION

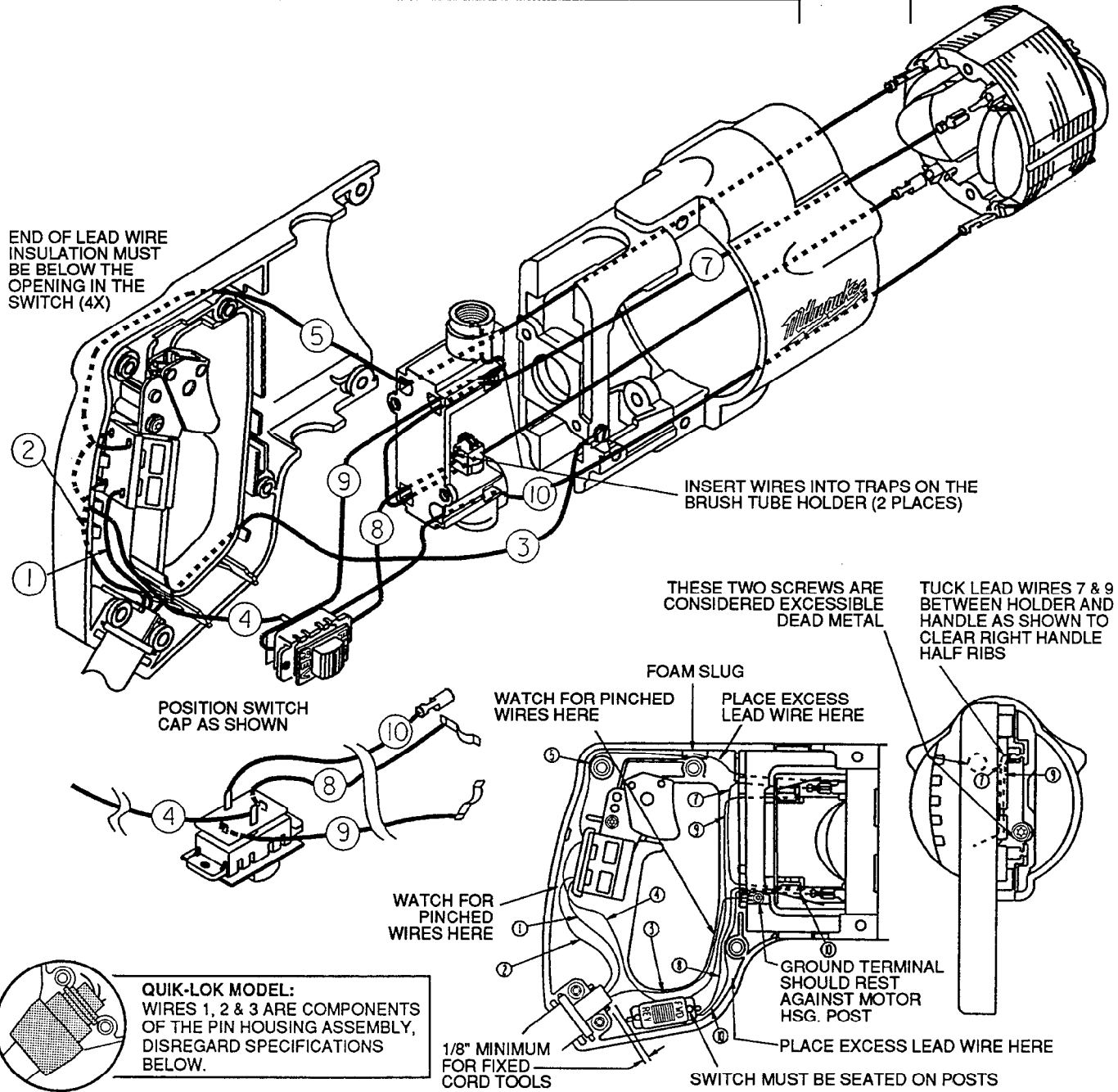
▲C1	22-56-0456	1
-----	------------	---

WIRING INSTRUCTIONS

TITLE

D-HANDLE TOOLS

BULLETIN
58-01-0773



WIRING SPECIFICATIONS					
Wire No.	Wire Color	Origin or Part No.	Gauge	Length	Terminals, Connectors and End Wire Preparation
1	White	Cord	18	3-3/4"	Strip 3/8" and tin.
2	Black	Cord	18	3-3/4"	Strip 3/8" and tin.
3	Green	Cord	18	5-1/2"	Strip 3/16" for T1.
4	Black	Rev. Switch	18	5-1/4"	Strip 3/8" and tin.
5	White	23-94-6115	18	8"	Strip 3/16" for T3 / Strip 3/8" and tin.
7	Yellow	23-94-6110	18	5-5/16"	Strip both ends 3/16" for T3.
8	Black	Rev. Switch	18	5-1/4"	Strip 1/4" for T2.
9	Black	Rev. Switch	18	7-1/4"	Strip 1/4" for T2.
10	Red	Rev. Switch	18	5-1/4"	Strip 3/16" for T3.

BULK LEAD WIRE - BULLETIN 58-01-0003

NOTE:
All leads must be held to $\pm 1/8"$.
All lead lengths are before stripping.

TERMINAL DESCRIPTION		
Code	Part No.	Qty.
T1	23-74-0896	1
T2	23-74-0410	2
T3	23-74-1060	4