



SERVICE PARTS LIST

BULLETIN NO.
54-05-0885

SPECIFY CATALOG NO. AND SERIAL NO. WHEN ORDERING PARTS			
M18™ FUEL™ 3-IN-1 BACKPACK VACUUM			
CATALOG NO.	0885-20	STARTING SERIAL NO.	J75A
			REVISED BULLETIN

EXAMPLE:

00	0
----	---

 Component Parts (Small #)
 Are Included When Ordering
 The Assembly (Large #).

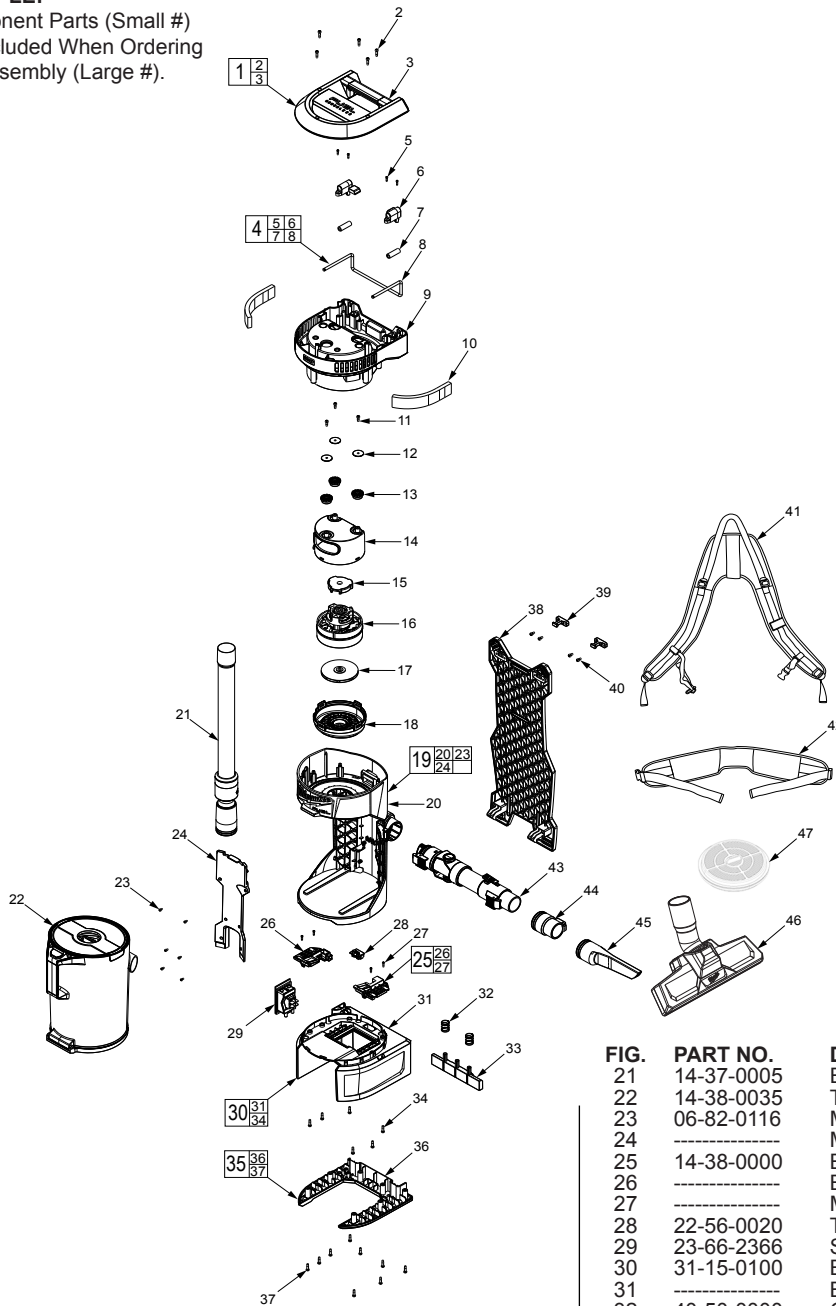


FIG.	PART NO.	DESCRIPTION OF PART	NO. REQ.
1	31-44-0000	Handle Kit	(1)
2	06-82-0102	M4 x 16 T20 Torx Screw	(5)
3	-----	Handle	(1)
4	14-36-0000	Hook Assembly w/ Strap and Pin	(1)
5	06-82-0102	M4 x 16 T20 Torx Screw	(4)
6	-----	Guide Block	(2)
7	-----	Bush	(2)
8	-----	Hook w/ Clips	(1)
9	31-50-0335	Motor Cover	(1)
10	42-40-0000	Motor Cover Filter Kit (Set of 2)	(1)
11	06-82-0104	M4 x 12 T20 Torx Screw	(3)
12	45-88-0000	Washer	(3)
13	43-44-0016	Rubber Gasket	(3)
14	31-50-0320	Top Motor Cover	(1)
15	45-06-0005	Upper Rubber Motor Sealing	(1)
16	23-30-0000	Motor Assembly	(1)
17	45-06-0000	Lower Rubber Motor Sealing	(1)
18	31-50-0300	Bottom Motor Cover	(1)
19	14-38-0005	Main Housing Kit	(1)
20	-----	Main Housing	(1)

FIG.	PART NO.	DESCRIPTION OF PART	NO. REQ.
21	14-37-0005	Extension Tube	(1)
22	14-38-0035	Tank Assembly	(1)
23	06-82-0116	M3 x 8 T10 Torx Screw	(6)
24	-----	Main Housing Plate	(1)
25	14-38-0000	Battery Cover Housing Kit	(1)
26	-----	Battery Cover Housing	(2)
27	-----	M4 x 12 T20 Torx Screw	(4)
28	22-56-0020	Terminal Block w/ Wire	(1)
29	23-66-2366	Switch Assembly w/ Wire	(1)
30	31-15-0100	Bottom Housing Kit	(1)
31	-----	Bottom Housing	(1)
32	40-50-0000	Guide Spring	(2)
33	44-52-0000	Guide Pad	(1)
34	06-82-0102	M4 x 16 T20 Torx Screw	(6)
35	31-15-0000	Bottom Housing Cover Kit	(1)
36	-----	Bottom Housing Cover	(1)
37	06-82-0102	M4 x 16 T20 Torx Screw	(9)
38	44-66-0100	Backplate Assembly	(1)
39	45-04-0012	Metal Guide	(2)
40	06-82-0118	M4 x 8.5 T20 Torx Screw	(4)
41	45-56-0000	Top Backpack Strap	(1)
42	45-56-0005	Lower Backpack Strap	(1)
43	31-01-0305	Hose Assembly	(1)
44	31-01-0320	Dust Extraction Tool	(1)
45	31-01-0310	Crevice Tool	(1)
46	31-01-0315	Floor Tool	(1)
47	49-90-1963	Filter	(1)
48	43-44-0000	Tank Seal Kit (Not Shown) (Includes all five seals in tank)	(1)