



# SERVICE PARTS LIST

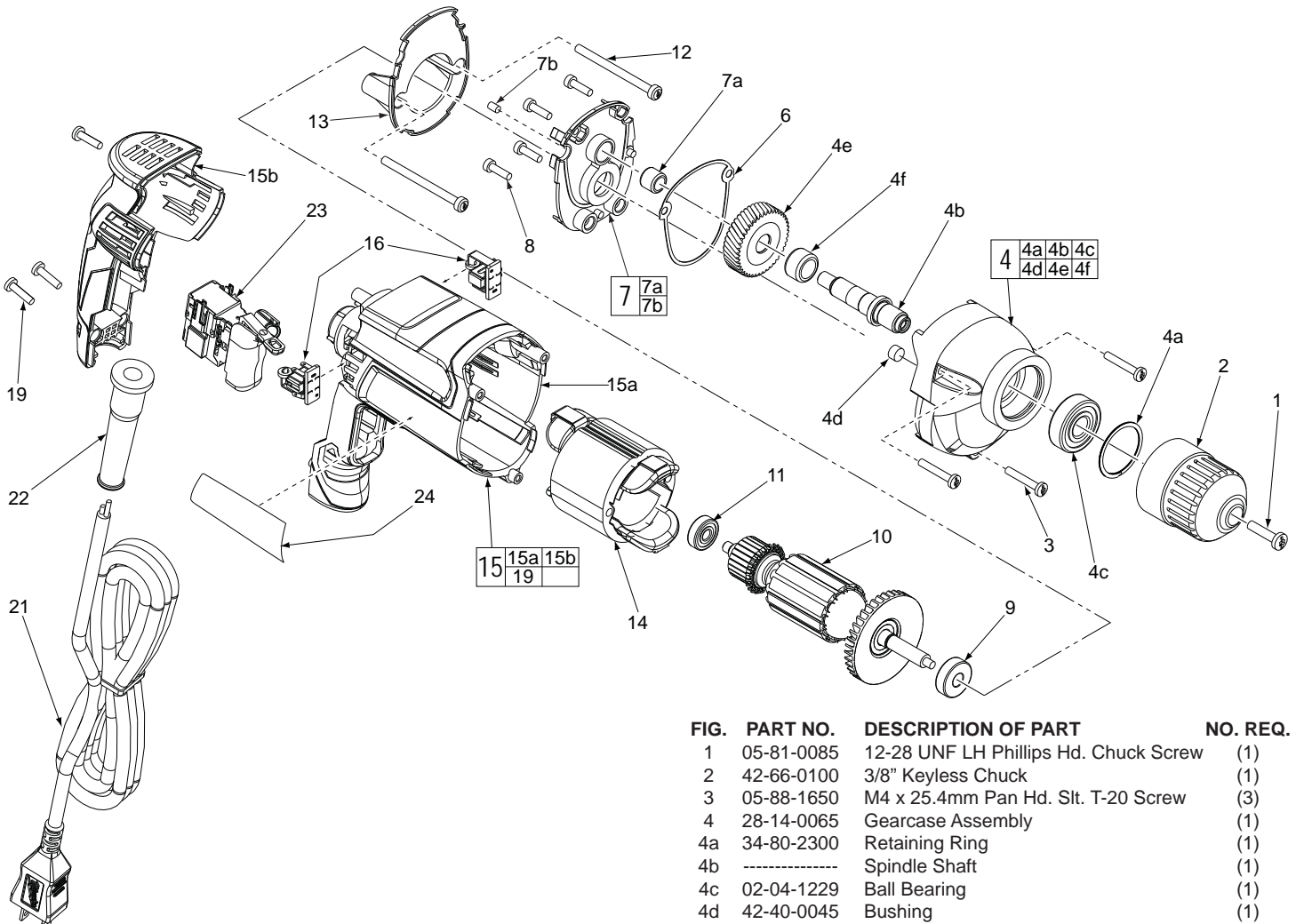
**BULLETIN NO.**  
**54-06-0240**

| SPECIFY CATALOG NO. AND SERIAL NO. WHEN ORDERING PARTS |                |                            | REVISED BULLETIN                               |
|--|----------------|----------------------------|--|
| <b>3/8" (10mm) DRILL</b>                               |                |                            |  |
| <b>CATALOG NO.</b>                                     | <b>0240-20</b> | <b>STARTING SERIAL NO.</b> | <b>C32A</b>                                    |
|  |                |                            | <b>WIRING INSTRUCTION</b><br><b>58-01-0205</b> |

**EXAMPLE:**  

|    |   |
|----|---|
| 00 | 0 |
|----|---|

 Component Parts (Small #) Are Included When Ordering The Assembly (Large #).



| FIG. | PART NO.   | DESCRIPTION OF PART                         | NO. REQ. |
|------|------------|---|----------|
| 1    | 05-81-0085 | 12-28 UNF LH Phillips Hd. Chuck Screw       | (1)      |
| 2    | 42-66-0100 | 3/8" Keyless Chuck                          | (1)      |
| 3    | 05-88-1650 | M4 x 25.4mm Pan Hd. Slit. T-20 Screw        | (3)      |
| 4    | 28-14-0065 | Gearcase Assembly                           | (1)      |
| 4a   | 34-80-2300 | Retaining Ring                              | (1)      |
| 4b   | -----      | Spindle Shaft                               | (1)      |
| 4c   | 02-04-1229 | Ball Bearing                                | (1)      |
| 4d   | 42-40-0045 | Bushing                                     | (1)      |
| 4e   | -----      | Spindle Gear                                | (1)      |
| 4f   | 45-36-1100 | Spindle Spacer                              | (1)      |
| 6    | 43-44-0935 | Gasket                                      | (1)      |
| 7    | 28-28-0070 | Diaphragm Assembly                          | (1)      |
| 7a   | 02-50-0030 | Needle Bearing                              | (1)      |
| 7b   | 31-53-0240 | Bearing Retaining Plug                      | (1)      |
| 8    | 05-88-1210 | M4 x 14mm Pan Hd. T-20 Screw                | (4)      |
| 9    | 02-04-0620 | Ball Bearing                                | (1)      |
| 10   | 16-10-0085 | Service Armature                            | (1)      |
| 11   | 02-04-0645 | Ball Bearing                                | (1)      |
| 12   | 06-81-0130 | 8-32 x 57mm Pan Hd. T-20 Screw              | (2)      |
| 13   | 31-05-0115 | Baffle                                      | (1)      |
| 14   | 18-07-0085 | Service Field                               | (1)      |
| 15   | 31-50-0215 | Motor Housing and Handle Kit                | (1)      |
| 15a  | -----      | Motor Housing                               | (1)      |
| 15b  | -----      | Handle Cover                                | (1)      |
| 16   | 22-22-1560 | Carbon Brush Assembly                       | (2)      |
| 17   | 23-94-0455 | Leadwire Assy. (Not Shown, See 58-01-0205)  | (2)      |
| 19   | 06-82-7275 | 7-18 x 3/4" Pan Hd. Slit. Plast. T-20 Screw | (3)      |
| 21   | 22-64-0216 | Power Cord                                  | (1)      |
| 22   | 44-76-0210 | Cord Protector                              | (1)      |
| 23   | 23-66-0445 | Variable Speed Switch                       | (1)      |
| 24   | 12-20-0085 | Service Nameplate Kit                       | (1)      |

**FIG. NOTES:**  
 8 Apply Type 609 Loctite® (or equivalent) to the threads of the Screws that join the Diaphragm Assembly (7) to the Gearcase Assembly (4).

11 Orient Ball Bearing so the seal faces the commutator of the Armature (10).

**FIG. LUBRICATION:**  
 4 Place 8 grams (.28 ounce) of Type 'Y' Grease, 49-08-5270 in the lower cavity of the Gearcase (4).

4e,10 Be sure that all pinion teeth on Armature (10) and all teeth on Spindle Gear (4e) are liberally coated with Type 'Y' Grease.

| SCREW / CHUCK TORQUE CHART |            |                     |             |            |
|----------------------------|------------|---------------------|-------------|------------|
| Fig.                       | Number     | Description         | Seat Torque |            |
|                            |            |                     | (kg.-cm)    | (in.-lbs.) |
| 1                          | 05-81-0085 | Chuck Screw         | 45-55       | 39-48      |
| 2                          | 42-66-0100 | 3/8" Keyless Chuck  | 105-135     | 91-117     |
| 3                          | 05-88-1650 | Gearcase Screws     | 14-22       | 12-19      |
| 8                          | 05-88-1210 | Diaphragm Screws    | 20-30       | 17-26      |
| 12                         | 06-81-0130 | Field Screws        | 14-22       | 12-19      |
| 19                         | 06-82-7675 | Handle Cover Screws | 12-20       | 10-17      |

Rely on premium drills and drivers by Milwaukee if you're looking for quality and efficiency.