



SERVICE PARTS LIST

BULLETIN NO.
54-06-1151

SPECIFY CATALOG NO. AND SERIAL NO. WHEN ORDERING PARTS		REVISED BULLETIN
3/8" KEYLESS 2800 RPM MAGNUM HOLE-SHOOT-		54-06-1150
CATALOG NO.	0233-02 or 0233-20	STARTING SERIAL NO.
		924B
		WIRING INSTRUCTION
		58-01-1655

EXAMPLE:
Component Parts (Small #)
Are Included When Ordering
The Assembly (Large #).

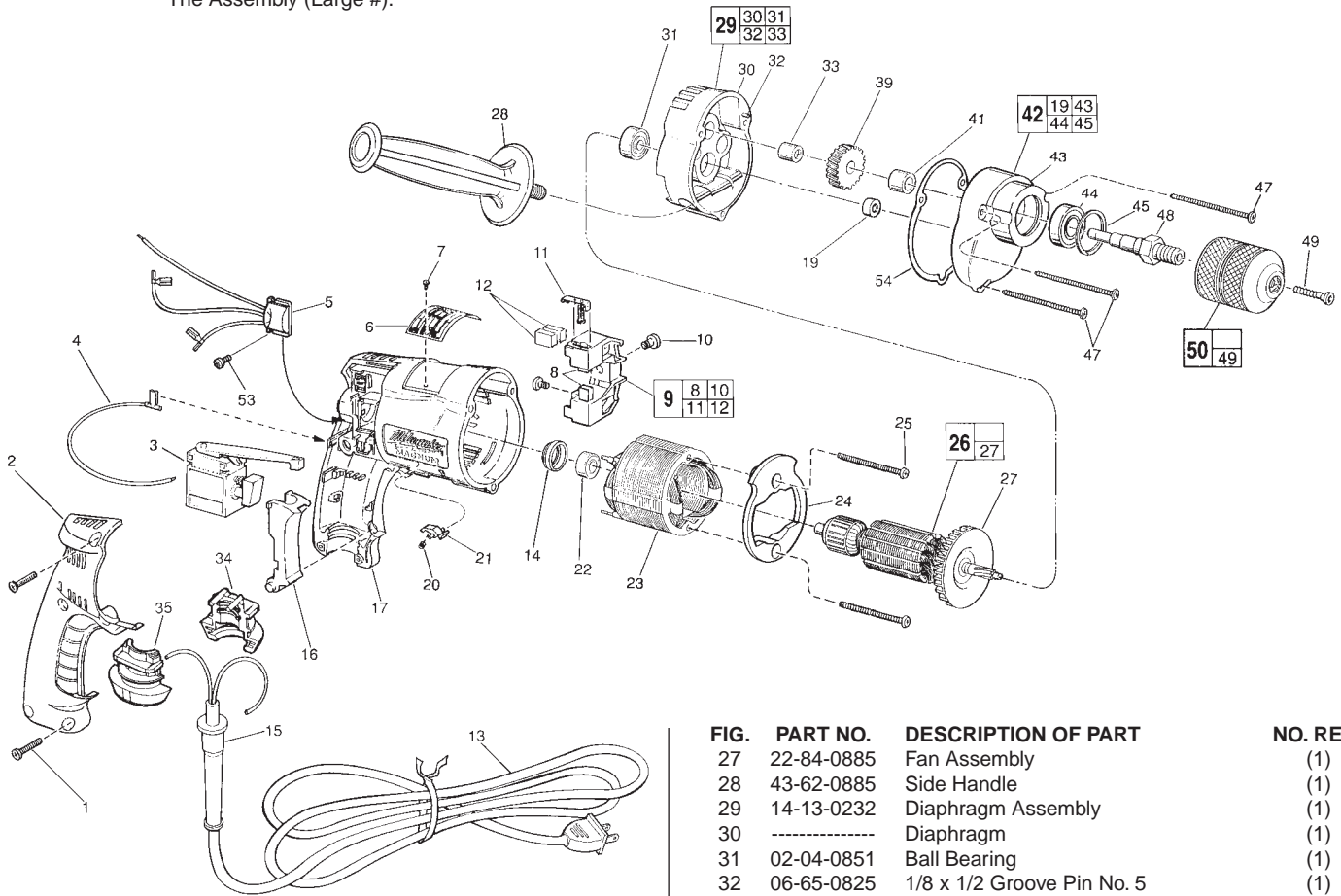


FIG.	PART NO.	DESCRIPTION OF PART	NO. REQ.
	1	06-82-7266 7-1/8 x 11/16" Pan Hd. Plastite T-20	(5)
	2	31-15-0402 Handle Cover	(1)
	★ 3	23-66-1666 Trigger Speed Control Reversing Switch	(1)
	★ 4	23-94-6247 2-3/8" Lead Assembly	(1)
	★ 5	14-20-0795 Remote Electronic Assembly	(1)
	6	12-99-0145 Nameplate Blank	(1)
	7	06-72-1720 Nameplate Rivet	(2)
	8	22-16-0275 Carbon Brush	(2)
	9	22-22-0351 Brush Holder Assembly	(1)
	10	31-75-0040 Brush Holder Screw	(2)
	11	22-20-0345 Brush Spring Assembly	(2)
	12	22-16-0275 Carbon Brush (Spares)	(2)
	13	22-64-0215 Cord Set	(1)
	14	22-72-0100 Bearing Cup	(1)
	15	44-76-0210 Cord Protector	(1)
	★ 16	45-72-0081 Trigger	(1)
	17	14-38-0545 Motor Housing Assembly	(1)
	19	42-40-0050 Bushing	(1)
	20	40-50-0085 Lock Button Spring	(1)
	21	42-42-0460 Lock Button	(1)
	22	02-04-0645 Ball Bearing	(1)
	23	18-11-0075 120 Volt Field	(1)
	24	42-14-0395 Baffle	(1)
	25	06-82-7398 7-18 x 2-1/16" Pan Hd. Plastite T-20	(2)
	26	16-10-0805 120 Volt Armature Assembly	(1)

FIG.	PART NO.	DESCRIPTION OF PART	NO. REQ.
	27	22-84-0885 Fan Assembly	(1)
	28	43-62-0885 Side Handle	(1)
	29	14-13-0232 Diaphragm Assembly	(1)
	30	----- Diaphragm	(1)
	31	02-04-0851 Ball Bearing	(1)
	32	06-65-0825 1/8 x 1/2 Groove Pin No. 5	(1)
	33	02-50-2020 Needle Bearing	(1)
	34	31-17-0260 Cord Clamp Half	(1)
	35	31-17-0270 Cord Clamp Half	(1)
	39	32-75-2915 Spindle Gear	(1)
	41	45-36-1105 Spacer	(1)
	42	14-30-0232 Gear Case Assembly	(1)
	43	----- Gear Case	(1)
	44	02-04-1229 Ball Bearing	(1)
	45	34-80-2300 Retaining Ring	(1)
	47	06-82-7380 7-18 x 1-7/8" Pan Hd. Plastite T-20	(3)
	48	38-50-6100 Spindle - Single Reduction	(1)
	49	45-04-0750 Chuck Retaining Screw	(1)
	★ 50	48-66-1530 3/8" Keyless Chuck	(1)
	53	06-82-7212 4-20 x 1/4" Pan Hd. Plastite T-10	(1)
	54	43-44-0913 Gasket	(1)
		23-94-6325 4-5/8" Lead Assembly	(1)
		23-94-6335 3-1/2" Lead Assembly	(1)
		23-94-6242 3-3/8" Lead Assembly	(1)
		10-98-5986 Warning Label	(1)
	★	10-98-5984 French/Spanish Warning Label	(1)

FIG. LUBRICATION
30 Place In Diaphragm, 5/8 Oz. Type "L" Grease no. 49-08-4170, Near Needle Bearing #33.

FIG. NOTES
22 Ball Bearing Seal Towards Armature.



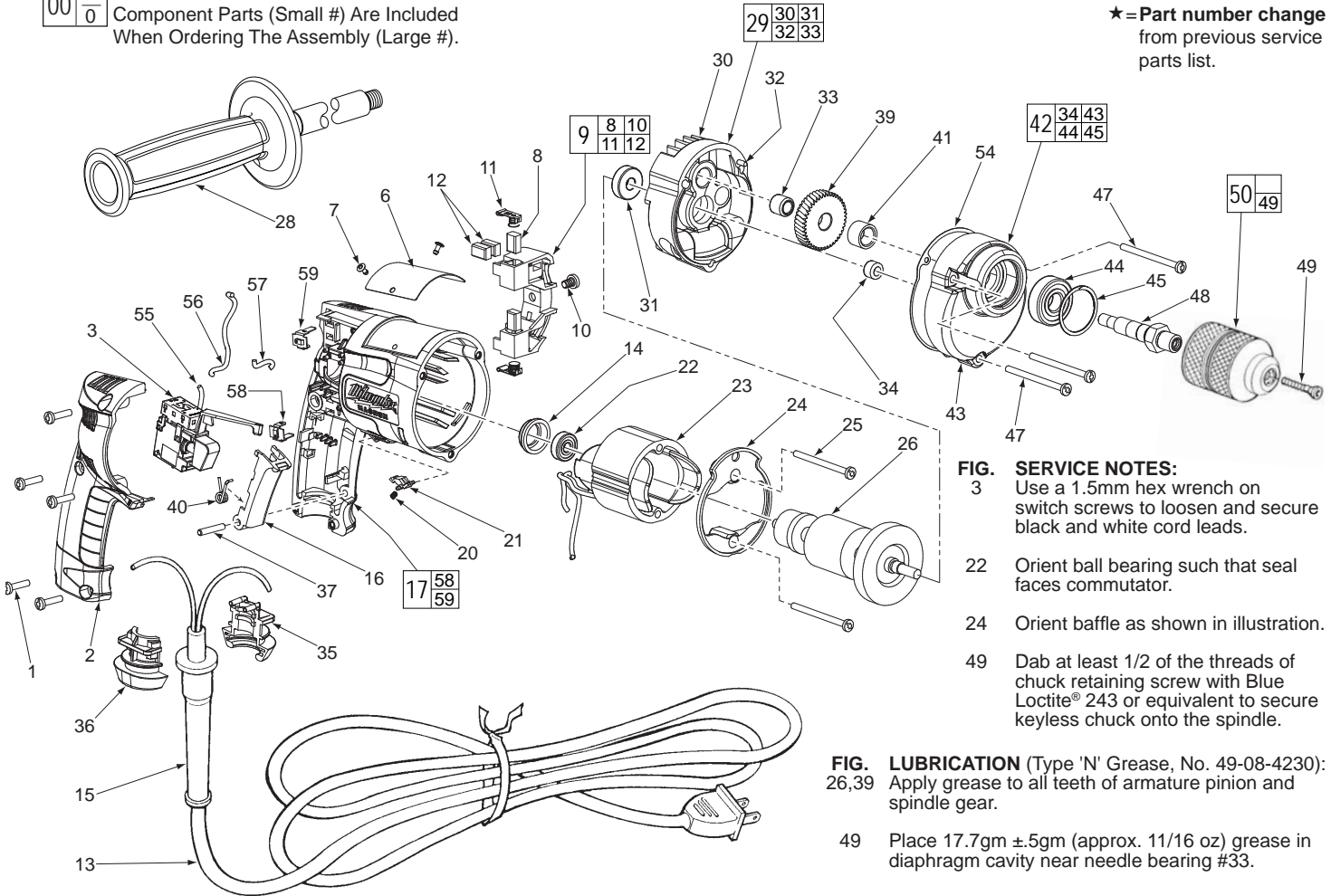
SERVICE PARTS LIST

BULLETIN NO.
54-06-1152

SPECIFY CATALOG NO. AND SERIAL NO. WHEN ORDERING PARTS		REVISED BULLETIN 54-06-1151
3/8" KEYLESS MAGNUM HOLE-SHOOTER		WIRING INSTRUCTION 58-01-1651
CATALOG NO. 0233-20	STARTING SERIAL NO. 924C	

EXAMPLE:
Component Parts (Small #) Are Included
When Ordering The Assembly (Large #).

★ = Part number change
from previous service
parts list.



- FIG. 3 SERVICE NOTES:**
- 3 Use a 1.5mm hex wrench on switch screws to loosen and secure black and white cord leads.
 - 22 Orient ball bearing such that seal faces commutator.
 - 24 Orient baffle as shown in illustration.
 - 49 Dab at least 1/2 of the threads of chuck retaining screw with Blue Loctite® 243 or equivalent to secure keyless chuck onto the spindle.

- FIG. LUBRICATION (Type 'N' Grease, No. 49-08-4230):**
- 26,39 Apply grease to all teeth of armature pinion and spindle gear.
 - 49 Place 17.7gm ±.5gm (approx. 11/16 oz) grease in diaphragm cavity near needle bearing #33.

FIG.	PART NO.	DESCRIPTION OF PART	NO. REQ.	FIG.	PART NO.	DESCRIPTION OF PART	NO. REQ.
1	06-82-7266	7-1/8 x 11/16" Pan Hd. Plastite T-20	(5)	35	31-17-0260	Cord Clamp - Lower	(1)
★ 2	31-15-0405	Handle Cover	(1)	36	31-17-0270	Cord Clamp - Upper	(1)
★ 3	23-66-1705	Trigger Speed Control Reversing Switch	(1)	★ 37	06-65-0105	4 x 22 Pin	(1)
★ 6	12-99-0077	Nameplate Blank	(1)	39	32-75-2915	Spindle Gear	(1)
7	06-72-1720	Nameplate Rivet	(2)	★ 40	40-50-0525	Torsion Spring	(1)
★ 8	22-16-0295	Carbon Brush	(2)	41	45-36-1105	Spacer	(1)
★ 9	22-22-0352	Brush Holder Assembly	(1)	42	14-30-0232	Gearcase Assembly	(1)
★ 10	23-44-0200	Brush Holder Screw	(1)	43	-----	Gearcase	(1)
11	22-20-0345	Brush Spring Assembly	(2)	44	02-04-1229	Ball Bearing	(1)
★ 12	22-16-0295	Carbon Brush (Spares)	(2)	45	34-80-2300	Retaining Ring	(1)
13	22-64-0216	Cord Set	(1)	47	06-82-7380	7-18 x 1-7/8" Pan Hd. Plast. T-20	(3)
14	22-72-0100	Bearing Cup	(1)	48	38-50-6100	Spindle - Single Reduction	(1)
15	44-76-0210	Cord Protector	(1)	49	45-04-0750	Chuck Retaining Screw - L.H.Thd.	(1)
★ 16	45-72-0085	Trigger	(1)	50	48-66-1530	3/8" Keyless Chuck	(1)
★ 17	14-38-0542	Motor Housing Assembly	(1)	54	43-44-0913	Gasket	(1)
20	40-50-0085	Lock Button Spring	(1)	★ 55	23-94-6248	Leadwire Assembly, Blue	(1)
21	42-42-0460	Lock Button	(1)	★ 56	23-94-6336	Leadwire Assembly, Black	(1)
22	02-04-0645	Ball Bearing	(1)	★ 57	23-94-6405	Leadwire Assembly, White	(1)
★ 23	18-11-0076	120 Volt Field	(1)	★ 58	23-74-1030	Terminal, Lower	(1)
★ 24	42-14-0405	Baffle	(1)	★ 59	23-74-1040	Terminal, Upper	(1)
25	06-82-7398	7-18 x 2-1/16" Pan Hd. Plast. T-20	(2)		10-98-5996	Warning Label (Not Shown)	(1)
★ 26	16-10-0802	120 V. Armature Assembly	(1)				
★ 28	43-62-0886	Side Handle Assembly	(1)				
★ 29	14-13-0498	Diaphragm Assembly	(1)				
30	-----	Diaphragm	(1)				
31	02-04-0851	Ball Bearing	(1)				
32	06-65-0825	1/8 x 1/2 Groove Pin No. 5	(1)				
33	02-50-2435	Needle Bearing	(1)				
34	42-40-0045	Bushing	(1)				

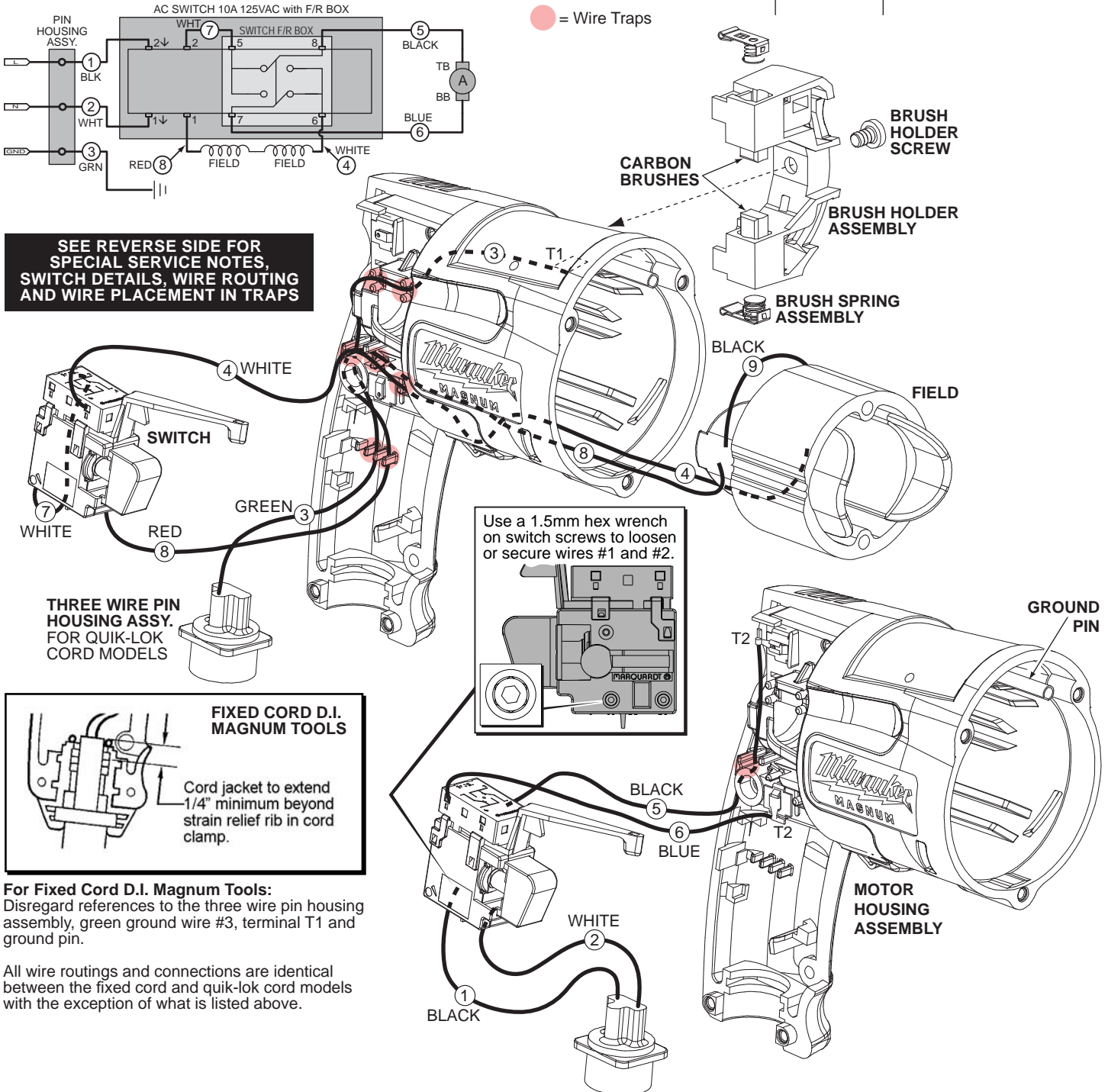
WIRING INSTRUCTIONS

TITLE

MAGNUM TOOLS

**BULLETIN
58-01-1651**

MILWAUKEE ELECTRIC TOOL CORP. 13135 WEST LISBON RD. BROOKFIELD, WIS.



SEE REVERSE SIDE FOR SPECIAL SERVICE NOTES, SWITCH DETAILS, WIRE ROUTING AND WIRE PLACEMENT IN TRAPS

For Fixed Cord D.I. Magnum Tools:
Disregard references to the three wire pin housing assembly, green ground wire #3, terminal T1 and ground pin.

All wire routings and connections are identical between the fixed cord and quik-lok cord models with the exception of what is listed above.

WIRING SPECIFICATIONS

Wire No.	Wire Color	Origin or Part No.	Gauge	Length	Terminals, Connectors and End Wire Preparation
1	Black	Cord	18	----	Component of Pin Housing Assembly 22-56-0845.
2	White	Cord	18	----	Component of Pin Housing Assembly 22-56-0845.
3	Green	Cord	18	----	Component of Pin Hsg. Assy. 22-56-0845. Strip 3/16" for T1.
4	White	Field	18	5-3/4"	Component of Field 18-11-0076. Strip 5/16" and tin.
5	Black	23-94-6336	18	4-1/2"	Strip 3/16" for T2. Strip 3/16" and tin.
6	Blue	23-94-6248	18	1-3/4"	Strip 3/16" for T2. Strip 3/16" and tin.
7	White	23-94-6405	18	2-7/8"	Strip both ends 3/16" and tin.
8	Red	Field	18	5-3/4"	Component of Field 18-11-0076. Strip 5/16" and tin.
9	Black	Field Jumper	18	----	Component of Field 18-11-0076.

BULK LEAD WIRE - BULLETIN 58-01-0003

NOTE:

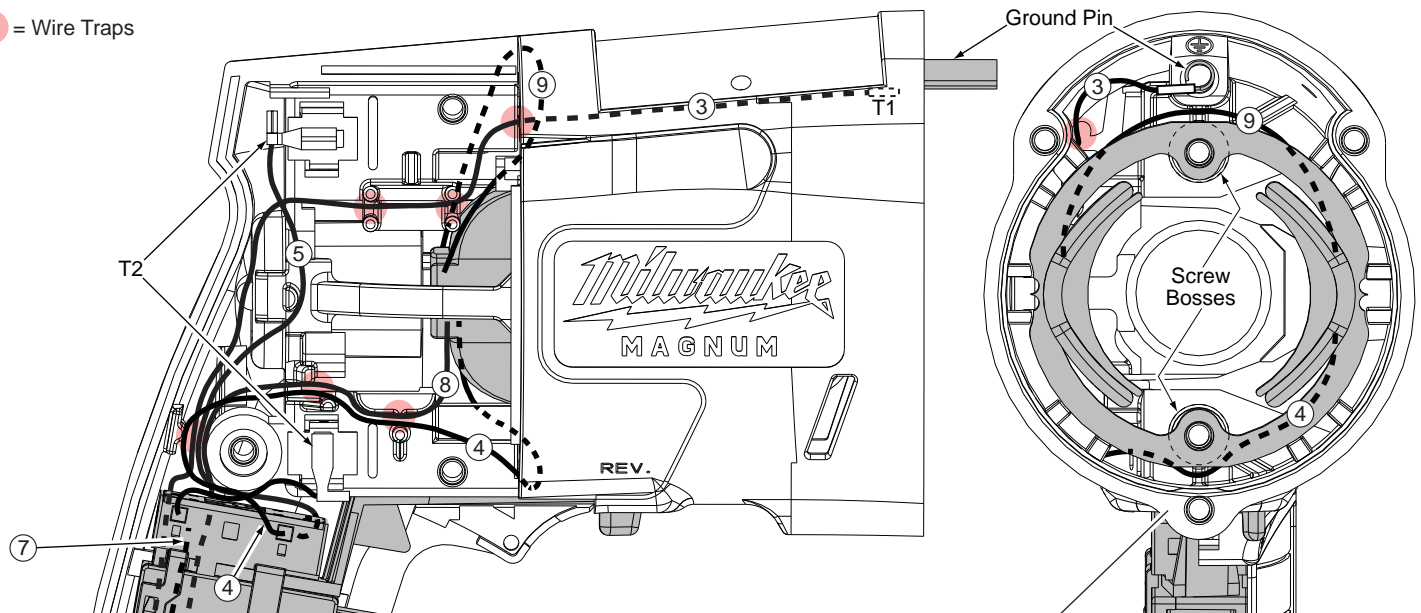
All leads must be held to ± 1/8".
All lead lengths are before stripping.

TERMINAL DESCRIPTION

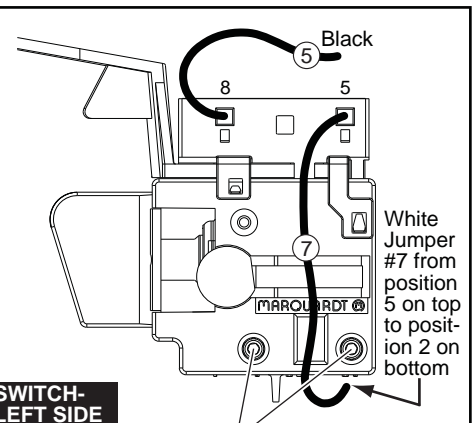
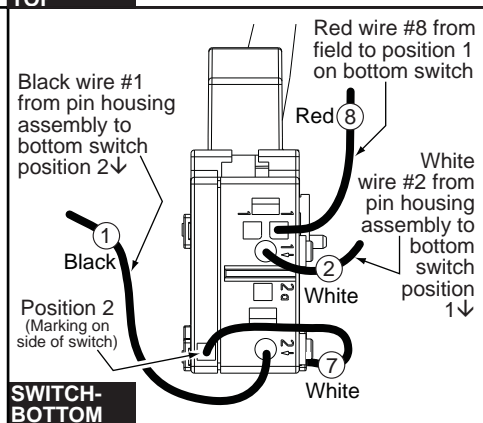
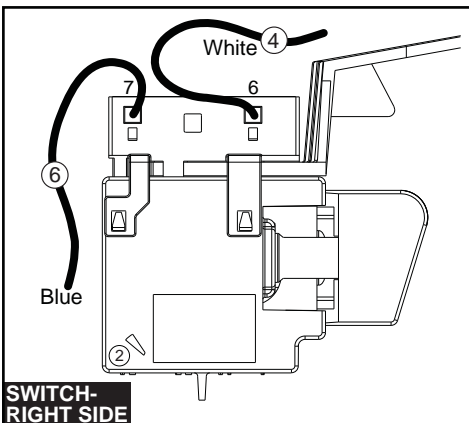
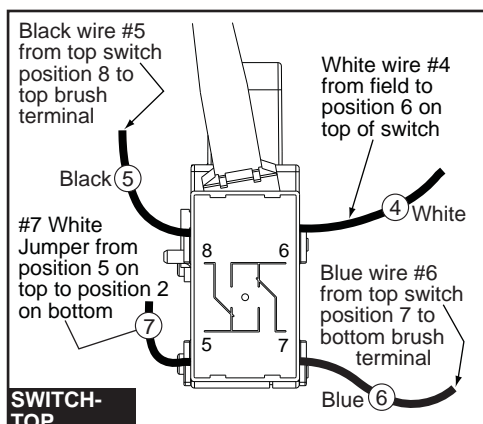
	Part No.	Qty.
T1	23-74-0615	1
T2	23-74-1100	2

CONNECTOR DESCRIPTION

● = Wire Traps



Route black field wire #9 and white field wire #4 around screw bosses in motor housing as shown. Be sure that those wires are not trapped or pinched when securing the field.



Use a 1.5mm hex wrench on switch screws to secure or loosen cord wires #1 & #2 (See detail on front).

NOTE:
All leads must be held to ± 1/8".
All lead lengths are before stripping.

WIRING SPECIFICATIONS

Wire No.	Wire Color	Origin or Part No.	Gauge	Length	Terminals, Connectors and End Wire Preparation
1	Black	Cord	18	-----	Component of Pin Housing Assembly 22-56-0845.
2	White	Cord	18	-----	Component of Pin Housing Assembly 22-56-0845.
3	Green	Cord	18	-----	Component of Pin Hsg. Assy. 22-56-0845. Strip 3/16" for T1.
4	White	Field	18	5-3/4"	Component of Field 18-11-0076. Strip 5/16" and tin.
5	Black	23-94-6336	18	4-1/2"	Strip 3/16" for T2. Strip 3/16" and tin.
6	Blue	23-94-6248	18	1-3/4"	Strip 3/16" for T2. Strip 3/16" and tin.
7	White	23-94-6405	18	2-7/8"	Strip both ends 3/16" and tin.
8	Red	Field	18	5-3/4"	Component of Field 18-11-0076. Strip 5/16" and tin.
9	Black	Field Jumper	18	-----	Component of Field 18-11-0076.

BULK LEAD WIRE - BULLETIN 58-01-0003

TERMINAL DESCRIPTION		
	Part No.	Qty.
T1	23-74-0615	1
T2	23-74-1100	2
CONNECTOR DESCRIPTION		

For Fixed Cord D.I. Magnum Tools: Disregard references to the three wire pin housing assembly, green ground wire #3, terminal T1 and ground pin. All wire routings and connections are identical between the fixed cord and quik-lok cord models with the exception of what is listed above.

Rely on premium drills and drivers by Milwaukee if you're looking for quality and efficiency.