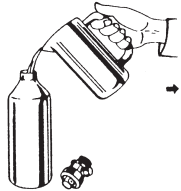

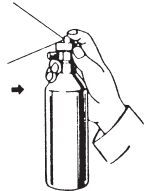


SURE SHOT ATOMIZER SPRAYERS

INSTRUCTIONS

**Refillable, Reusable. Extra Versatile.
Pressurized by Free Air.**

	TOP LOAD WITH LIGHT LIQUIDS	PRESSURIZE WITH AIR CHUCK	SPRAY ANYWHERE
MODEL B 16 oz. 8 oz. 7 oz.			



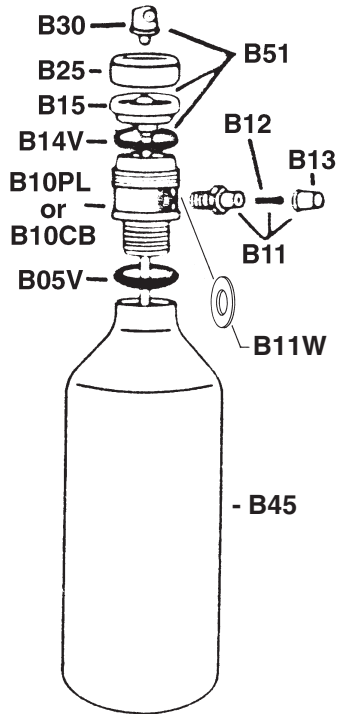
DIRECTIONS FOR OPERATING MODEL "B" SPRAYERS

- 1) **ALWAYS DEPRESSURIZE SPRAYER BEFORE REMOVING ANY PARTS.** The pressure may be let out of the sprayer one of the two following ways:
 - a) Tip the sprayer upside down and depress nozzle until no pressure is left. If some liquid is left in the sprayer when attempting this procedure make sure you aim the nozzle at a place where a little bit of liquid can be expelled.
 - b) Remove B13 black cap from filler assembly and use small probe to depress the valve core until all the pressure escapes. NOTE: Make sure the sprayer is upright and the filler assembly is pointed away from you when depressing the valve core.
 - 2) Remove the complete top assembly from the canister once all the air has been let out of the sprayer. Do this by grasping the body in one hand and the canister in the other and unscrewing counterclockwise completely.
 - 3) Fill canister 2/3 full (7,8 or 16 ounce maximum capacity) with light, clean liquid. Make sure the liquid you are putting into the sprayer is CLEAN and FREE OF FOREIGN PARTICLES. See ACCESSORIES on page 3 for the liquid filling/measuring device.
 - 4) Place complete top assembly on the canister and firmly hand tighten.
 - 5) Choose the nozzle you wish to use from the poly bag in the carton. Once you have chosen the nozzle, assemble it to the stem of the B15/B16 valve on top of your sprayer. NOTE: Nozzle must be firmly pushed into place.
 - 6) Pressurize sprayer with compressed air by holding a standard air chuck onto the filler assembly stem and depress the valve core. Hold the air chuck in place until you hear the line pressure equalize with the pressure in the sprayer. Hold the sprayer upright while pressurizing. Working pressure is 80 - 145 psi. At least 80 psi is necessary to spray the full 7, 8 or 16 ounces without repressurizing. **THE MAXIMUM PRESSURE SHOULD NOT EXCEED 200 PSI.**
 - 7) The Model "B" sprayer is now ready to use.
 - 8) For best results, the liquid to be sprayed should be lighter than a No. 10 motor oil. **(If liquid is too heavy a pin stream will result).** Dilute with a suitable diluent until desired spray is obtained.
- CAUTION:** Never point the nozzle of sprayer towards yourself or any other person. Always point the nozzle of the sprayer away from yourself and toward the intended target before depressing the nozzle.
- NOTE: ALWAYS CHECK WITH THE CHEMICAL SUPPLIER FOR CHEMICAL COMPATIBILITY WITH O'RINGS, VALVES AND CANISTERS.**

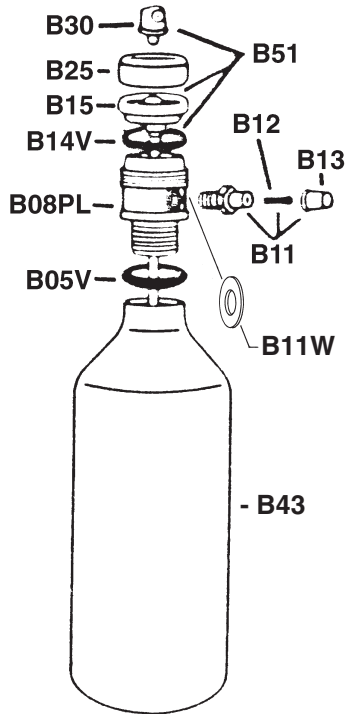
SPRAYER NOT RECOMMENDED FOR USE WITH PAINTS

DO NOT PRESSURIZE SPRAYER WITHOUT B25 VALVE HEAD IN PLACE AND FIRMLY HAND TIGHTENED

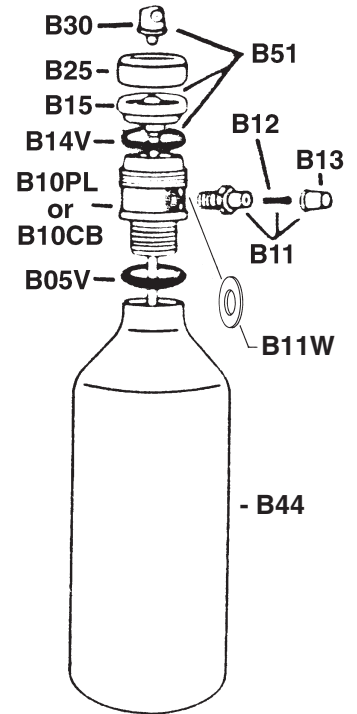
**B8000PL / B8000CB
ALUMINUM**



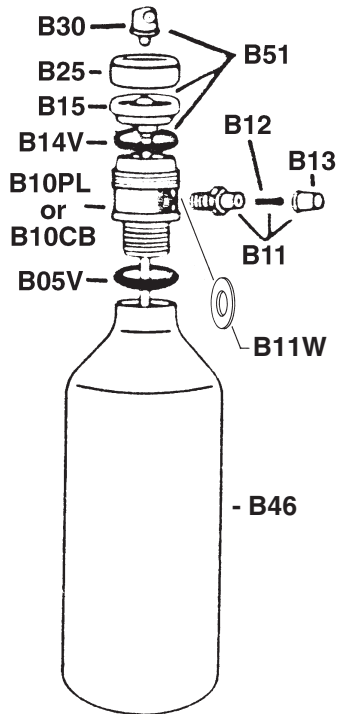
**B8200PL
ALUMINUM**



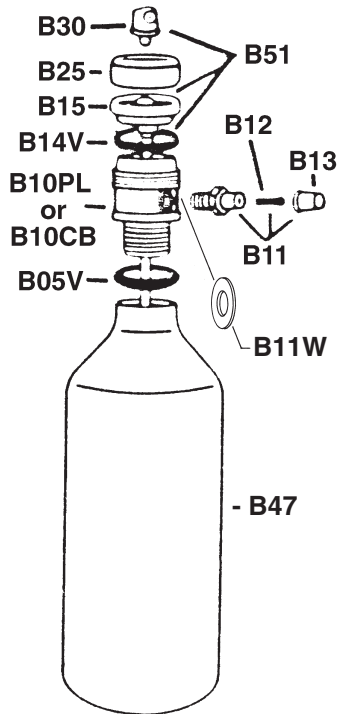
**B8300PL / B8300CB
ALUMINUM**



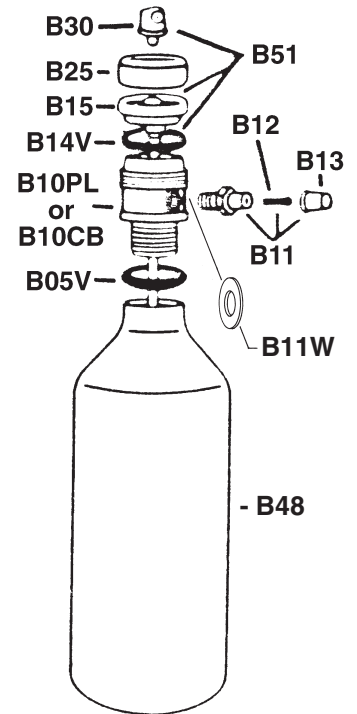
**B8100PL / B8100CB
PLATED ALUMINUM**



**B8400PL/B8400CB
PLATED, BRUSHED
ALUMINUM**



**B8700PL / B8700CB
PLATED, BRUSHED
ALUMINUM**



PL — DESIGNATES PLASTIC BODY

CB — DESIGNATES CHROME BRASS BODY

<u>PART#</u>	<u>DESCRIPTION</u>
B05BUNA	Buna O'Ring
B05N	Neoprene O'Ring
B05EP	Ethylene Propylene O'Ring
B05V	Viton® O'Ring
B08PL	Plastic Body (8200 only)
B10CB	Chrome Brass Body
B10PL	Plastic Body
B11	Air Filler Assembly (includes B11W, B12 & B13)
B11W	Teflon® Washer
B12	Valve Core - Viton®
B13	Black Cap
B14BUNA	Buna O'Ring
B14N	Neoprene O'Ring
B14EP	Ethylene Propylene O'Ring
B14V	Viton® O'Ring
B15	Viton® Valve
B15N	Neoprene Valve
B16	Buna Valve
B17	Butyl Rubber Valve
B25	Aluminum Valve Head
B30-001	Pin Stream Nozzle
B30-035	Medium Spray Nozzle
B30-040	Fine Spray Nozzle

<u>PART#</u>	<u>DESCRIPTION</u>
B30-043	Regular Spray Nozzle
B30-080	Coarse Spray Nozzle
B32	Plastic Adjustable Nozzle for all Model "B"s
B43	7 ounce Aluminum Canister (8200)
B44	8 ounce Aluminum Canister (8300)
B45	16 ounce Aluminum Canister (8000)
B46	16 ounce Plated Aluminum Canister (8100)
B47	16 ounce Plated, Brushed Aluminum Canister (8400)
B48	8 ounce Plated, Brushed Aluminum Canister (8700)

REPAIR KITS

B51	6 Complete Valve Assemblies - contains 6 each - B14V & B15 and 3 each - B30-001 w/6" tube & B30-043
BK50	Complete Repair Kit contains B05V, B11, B12, B13, B25, 6 each - B14V & B15 and 3 each - B30-001 w/6" tube & B30-043

ACCESSORIES



P07362

Filling/Measuring Device 32 ounce capacity - Heavy Duty Polyethylene container with brass mesh screen and easy fill spout.

REPAIR PROCEDURES

The following is the correct order and way to remove and reassemble all the parts on the Model "B" Sprayer.

- a) **ALWAYS DEPRESSURIZE SPRAYER BEFORE REMOVING ANY PARTS.** See page 1. #1.
- b) Remove the complete top assembly from the canister once all the air has been let out of the sprayer. Do this by grasping the body in one hand and the canister in the other and unscrewing counterclockwise completely.
- c) Unscrew the valve head from the body.
- d) Remove the valve and B14 o'ring from the body.
- e) Remove the 7/16" hex air filler (B11) assembly from the side of the body.

NOTE: The B11W teflon washer will be left in the recessed threaded area on the body where the air filler assembly was just removed. The B11W must be removed and replaced.

- f) Remove the o'ring from the body.
- g) The Model "B" sprayer is completely unassembled.
- h) To reassemble, start by reassembling the o'ring to the body.
- i) Take a new B11W Teflon® washer and insert into the recessed threaded area on the side of the body.
- j) Take the 7/16" hex air filler (B11) assembly and screw on by hand. Tighten with wrench. NOTE: Be careful to only tighten until snug. DO NOT OVERTIGHTEN.
- k) Assemble B14 o'ring to valve and reposition on top of body.
- l) Take B25 valve head and secure valve and o'ring in place. Firmly hand tighten only.
- m) Take the completed top assembly and screw it clockwise into top of the canister. Firmly hand tighten only.
- n) Pressurize and check for leaks. If leaks are found retighten the loose part or parts until leaks stop. Depressurize and follow steps #1 - #7 on page 1.

**DO NOT PRESSURIZE SPRAYER WITHOUT
B25 VALVE HEAD IN PLACE AND TIGHTENED**

MAXIMUM PRESSURE — 200 PSI

TROUBLE SHOOTING

Normal maintenance includes replacing the B15/B16 valve

THE B15/B16 VALVE WILL NEED TO BE PERIODICALLY REPLACED. THE LONGEVITY OF EACH VALVE DEPENDS ON THE PRODUCT BEING SPRAYED AND THE AMOUNT OF SEDIMENT OR DIRT THAT GETS INSIDE THE SPRAYER WHILE FILLING.

Four fillings is the average before the valve needs to be replaced. But it is not uncommon to get more than four fillings out of each valve.

THE STANDARD MODEL B UNITS COME WITH VITON® O'RINGS, A B15 VITON® VALVE, AND B12 VITON® VALVE CORE. NOT ALL PRODUCTS ARE COMPATIBLE WITH VITON®.

There are a variety of o'rings available (Viton®, Neoprene, Buna & Ethylene Propylene). There are three different valves (B15 Viton®, B15N Neoprene & B16-Buna). There are two different valve cores (B12 - Viton® & B12N - nitrile).

If the standard Viton® o'rings and seals are not compatible with the product being sprayed please check with the chemical supplier for compatibility with the other o'rings and seals that are available.

Viton® o'rings and seals are standard on Model "B" sprayers because they are compatible with the widest range of sprayable products.

Problem: Leaks from around B25 valve head.

Reason/Solution

- 1) B25 valve too loose. Firmly tighten by hand only.
- 2) B14 o'ring is crimped or has some loose particles on it. Depressurize sprayer and remove B25 valve head. Remove valve and check o'ring. Clean away any loose particles and wet o'ring. Reassemble and repressurize.

TROUBLE SHOOTING

Problem: Pin Stream only.

Reason/Solution

- 1) Liquid is too thick. Thin with proper diluent until sprayable. Consult your chemical supplier for correct thinning procedures.
- 2) Too little air pressure. You must have at least 80 psi to spray full contents of sprayer.
- 3) Pin Stream nozzle in operating position. Remove. Replace with a spray nozzle. (regular, fine, medium & coarse)

Problem: Air filler assembly won't accept air or leaks

Reason/Solution

- 1) Air filler assembly has been damaged. Replace.
- 2) Valve core is swollen. Replace.
- 3) Chemical is attacking valve core. Replace B11 with an alternative valve core.

Problem: Will not spray at all.

Reason/Solution

- 1) Nozzle is completely clogged. Replace
- 2) Valve is completely clogged. Replace.
- 3) No Air pressure. Pressurize with at least 80 psi
- 4) Sprayer is full to top with liquid not allowing room for compressed air.

Problem: Leaks from valve stem/nozzle.

Reason/Solution

- 1) Valve worn or swollen. Replace. Standard valve has a Viton® seal. Valves also available in neoprene and buna for chemicals not compatible with Viton®.

Problem: Leaks from between body and canister.

Reason/Solution

- 1) O'ring is dirty. Clean and wet.
- 2) O'ring is swollen. Replace. Standard o'ring is Viton®. Neoprene, ethylene propylene, and buna, are available for chemicals that are not compatible with Viton®.

WARNING * WARNING * WARNING

Sprayer Units returned to the factory containing **ANY LIQUIDS** will be returned to sender at their expense.

WARRANTY

SURE SHOT SPRAYERS, Parts and Accessories are guaranteed against defective materials and workmanship under normal conditions of use and service for a period of ninety days from date of sale to the consumer or nine months from date of shipment from the factory, whichever transpires first. The obligation of the Company (Milwaukee Sprayer Mfg. Co., Inc.) shall be limited to repairing or replacing any sprayer, part or accessory which is found by the Company to be defective, provided that a written claim covering such defect is submitted within the warranty period. The Company shall in no event be liable for consequential damages arising out of a defect or failure in any sprayer, part or accessory, or for any loss arising from the use or resale of any such materials, the Company's liability being limited to repair or replacement of defective components as aforesaid. This warranty shall not apply to defects resulting from accident, alterations, abuse or misuse, including solutions not recommended for use with the materials used in the manufacturing of this unit. Although it shall be the policy of the Company to be liberal in making adjustments, the settlement of claims regarding product defects will be governed by the provisions of this warranty. No other warranty, expressed or implied, is made by Milwaukee Sprayer Mfg. Co., Inc. with respect to any sales or products referred to herein.