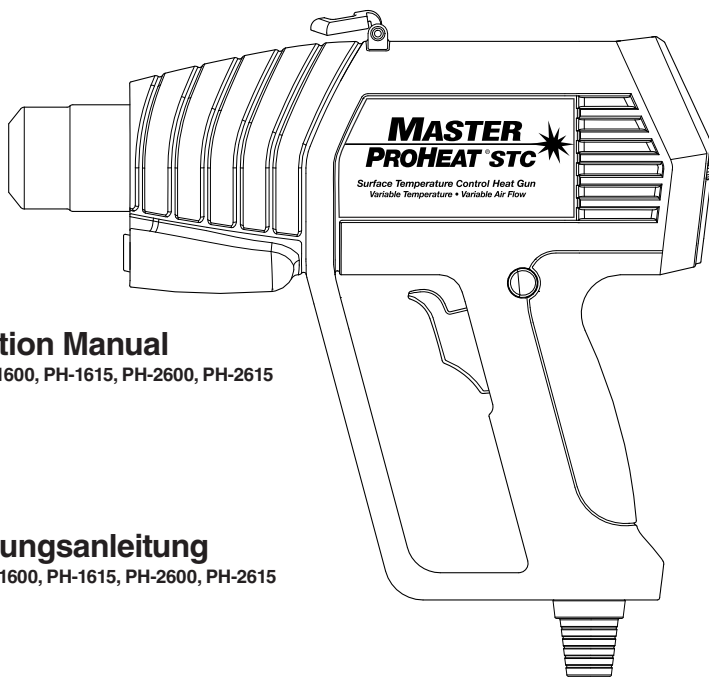


PROHEAT STC
Surface Temperature Control Heat Gun



Instruction Manual

Models PH-1600, PH-1615, PH-2600, PH-2615

Bedienungsanleitung

Modelle PH-1600, PH-1615, PH-2600, PH-2615



Original Instructions

Please read, understand and keep this manual for future reference.

Important Safety Instructions

Heat guns are a source of extremely high-temperature flameless heat (up to 1000°F / 540°C). Extreme caution should be observed when using these products. **READ** and **FOLLOW** these instructions.



Caution! Laser radiation. Do not stare into beam. Class 1 laser product.



120V/15A 230V/8A

Use only on properly-rated electrical circuits.
Connect to properly grounded outlets only.
Disconnect from power source during service and when replacing parts.



120V/15A 230V/8A

When using an extension cord, use only a 3-wired grounded cord rated equal to or greater than the appliance. Connect to properly grounded outlets only.



To reduce risk of fire or electric shock, do not expose heat gun to rain or moisture.
Store indoors.



If the supply cord is damaged, it must be replaced by the manufacturer, its service agent or similarly qualified persons in order to avoid a hazard.



Do not use near flammable materials or where fumes, gases or dust are present.
Do not use in presence of explosive atmosphere.



Keep away from children and persons with reduced physical, sensory or mental capabilities or lack of experience or knowledge.



Keep nozzle at least 1"/2.5 cm from work surface.
Do not apply to the same place for a long time.
Be aware that heat may be conducted to combustible materials that are out of sight.



Do not direct air stream at people or pets.



Use in well-ventilated area.
Use caution in confined areas.



Wear safety glasses at all times.



Do not leave heat gun unattended when it is switched on.



Do not touch nozzle until cool.



Place heat gun on its stand after use and allow it to cool down before storage.



Recycle properly.

Introduction, Product Warranty, Features & Specifications

Introduction

Master's ProHeat STC is the first heat gun of its kind that has the ability to sense and control the temperature of the work surface. This is done by setting the desired target temperature on the LCD and watching the actual work surface temperature increase until it reaches your target temperature. The ProHeat STC is perfect for use on temperature sensitive surfaces of all types where heat control is needed. For use with accessories traditional nozzle temperature control is required and the ProHeat STC allows the user to toggle between the surface temperature control and nozzle temperature control modes.

Be sure to take time and familiarize yourself with the safety and operating instructions inside this manual.

Features

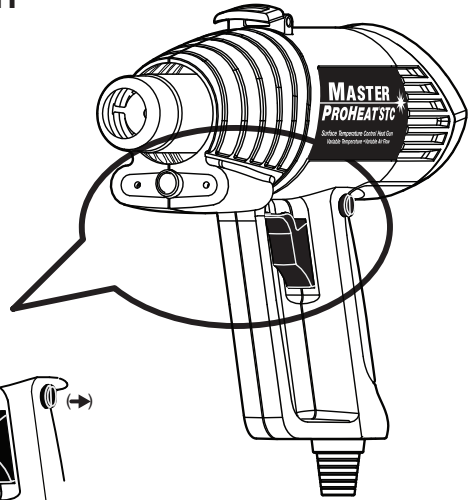
Model Name Model No.	Variable Airflow	Variable Temp.	Digital Display	Lock Controls	Temperature Control		Use Attachments
					Surface	Nozzle	
ProHeat STC PH-1600, PH-1615 PH-2600, PH-2615	●	●	●	●	●	●	

Specifications

Model No.	V ac	Hz	Max Watt	Max Amp	Temperature Setting		Airflow	Net Wt.	Noise Emission
					Mode				
PH-1600 PH-1615	120	60	1426	11	90 - 500°F 40 - 270°C	170 - 1000°F 80 - 540°C	4-16 CFM .11-.45 CMM	30 ± 850 g	<70 dB(A)
PH-2600 PH-2615	230	50/60	1320	6.8					

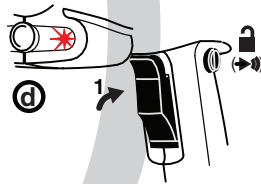
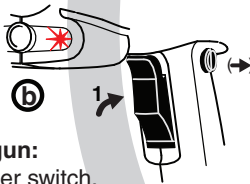
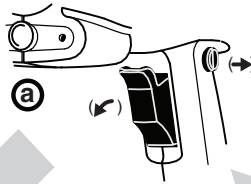
Operating Instructions

HOW TO USE TRIGGER SWITCH AND TRIGGER LOCK



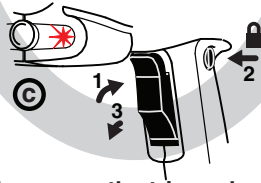
Gun is Off:

Momentary contact trigger switch is in Out position (not engaged); trigger lock is in Out position (not engaged).



To operate the gun:

1) Press the trigger switch. Heating element and fan start up; temperature sensor and laser targeting system become active; temperature and airflow are adjustable (see following pages).



To release trigger lock:

1) Press the trigger switch; lock button releases. If trigger switch is not held in manually, the gun will turn Off.

To engage the trigger lock:

1) Press the trigger switch fully and hold;
2) Press the button at top of the handle;
3) Release the trigger switch, the gun will stay On.

HOW TO USE PROLOC SUPERVISOR KEY

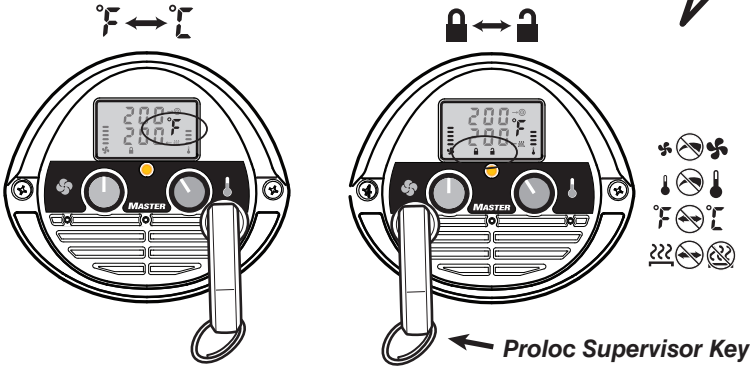
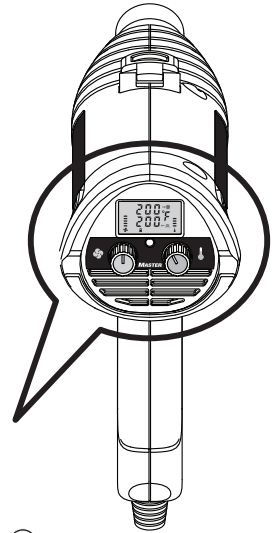
Make sure to turn the unit ON before applying key.

To change between Fahrenheit and Celsius:

Place the Proloc Key on the right side dot below the thermometer icon.

To lock/unlock all controls:

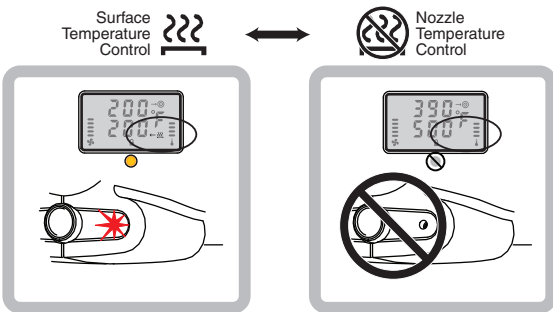
After dialing in the temperature and airflow that is best for your application, place the Proloc Key on the left side dot beneath the fan icon. Repeat to unlock controls.



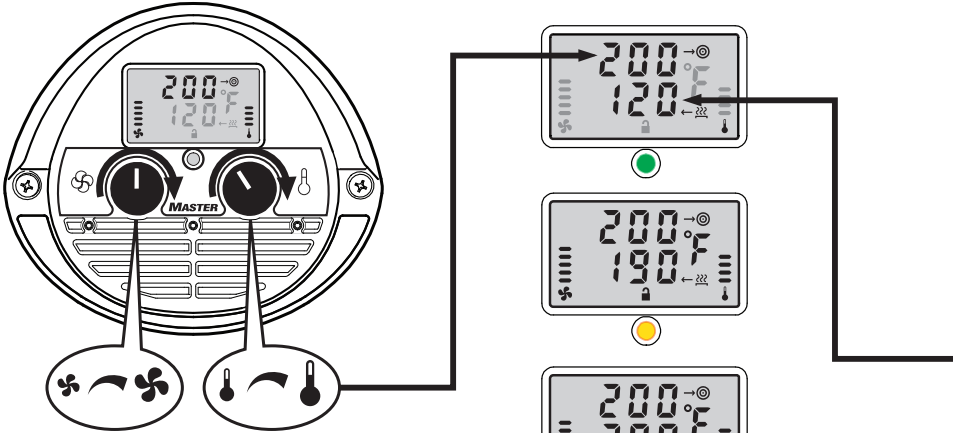
To change between Surface Temperature Control and Nozzle Temperature Control:

Place the Proloc Key on the center dot below MASTER.

Note: This mode cannot be changed when controls are locked (see above).

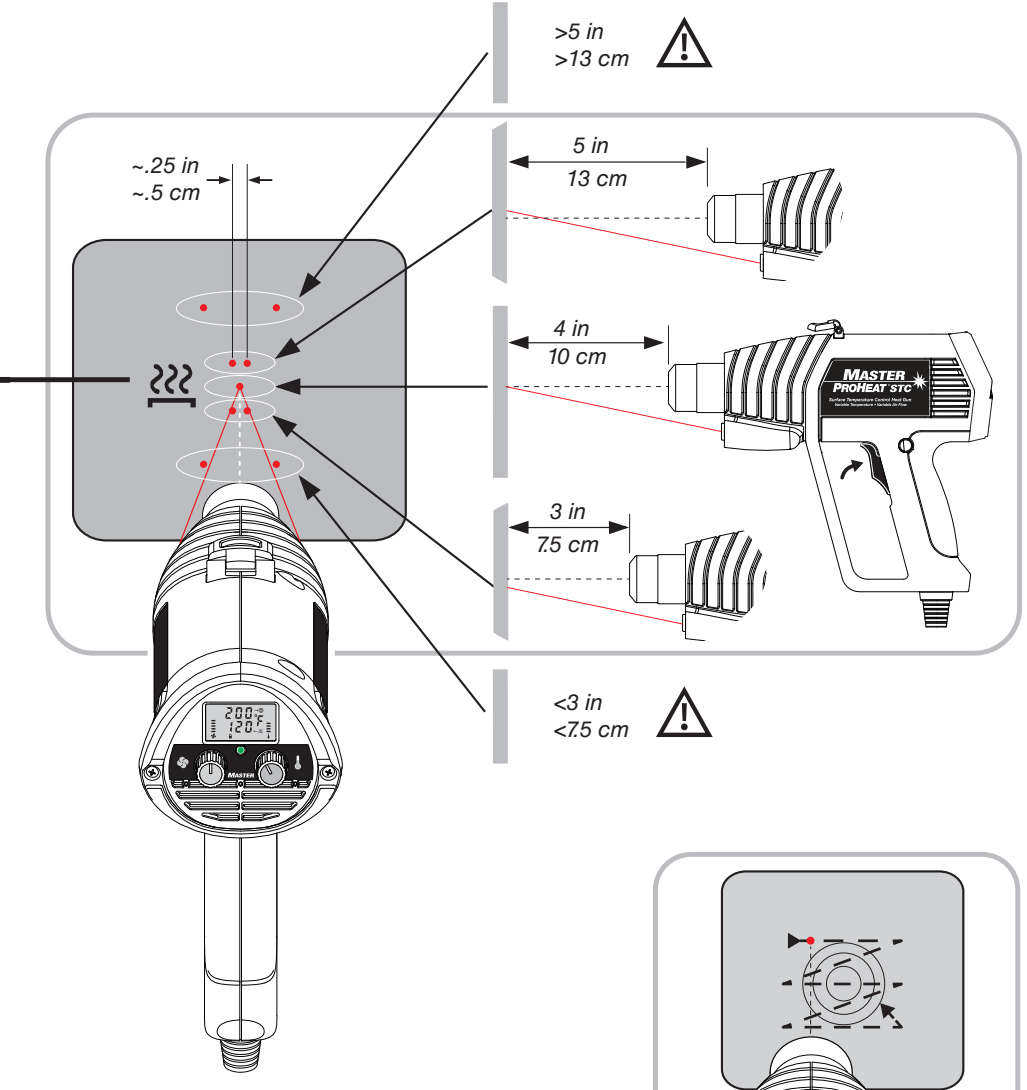


Operating Instructions



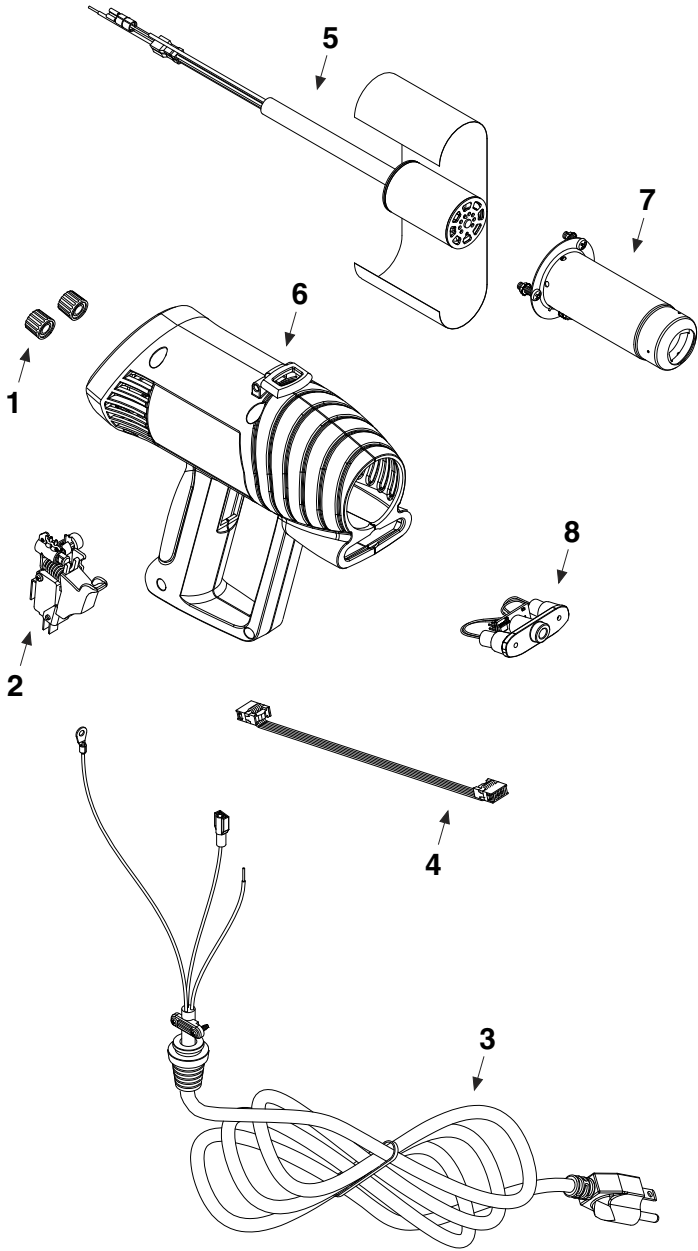
HOW TO USE SURFACE TEMPERATURE CONTROL (STC)

- Plug heat gun into appropriate electrical outlet and press switch.
- Set desired (target) surface temperature and airflow. Target temperature will display on the upper row of the LCD display.
- Point the nozzle at the work surface. The lasers will indicate the proper field of view for accurate temperature measurement. For targeting purpose, the lasers converge approximately 4 inches from the end of the nozzle. Laser points separated by 1/4 inch or less (either closer or farther away from the work surface) are acceptable for accurate measurement.
- The current surface temperature will display on the lower row of the LCD.
- For greatest temperature accuracy, move the heat gun nozzle evenly back and forth over the target surface area.
- As the work surface heats up to the target temperature the rising surface temperature displays on the lower row of the LCD. Green, yellow and red LED lights also indicate heating progress. Green means continue heating. Yellow means you are approaching your target temperature. Intermittent flashes of red LED indicate that the surface has reached the target temperature and your ProHeat STC is automatically regulating the heater to maintain the target temperature. Both the desired target temperature and the actual surface temperature display will match.
- The ProHeat STC compensates for changes in distance from the work surface by automatically adjusting temperature output.
- When heating process is completed, release trigger switch. Set heat gun on back end cap with nozzle pointing up and allow it to cool, then unplug and properly store unit for future use.



NOTE: Target surface temperature on the ProHeat STC can be dialed up to 500°F (260°C) in 10 degree increments. Thermal conductivity, emissivity and climate conditions may affect maximum heat range. Different material surfaces have varying capacities of absorbing heat. Users should independently evaluate the suitability of the product for their application.

Replacement Parts



Item	Part Number	Description
1	35442	Knobs (2)
2	35443	Switch and Lock Assembly
3	35444	Cordset Assembly (120V, NEMA 5-15 Plug)
	35452	Cordset Assembly (230V, Euro Plug)
	35453	Cordset Assembly (240V, UK Plug)
4	35445	Ribbon Cable
5	35446	Heating Element Assembly (120V)
	35451	Heating Element Assembly (230V)
6	35447	Housing Kit
7	35448	Nozzle and Hardware
8	35449	Sensor Cartridge Assembly



WARNING: This product, when used for soldering and similar applications, can expose you to LEAD, which is known to the State of California to cause cancer and birth defects and other reproductive harm.