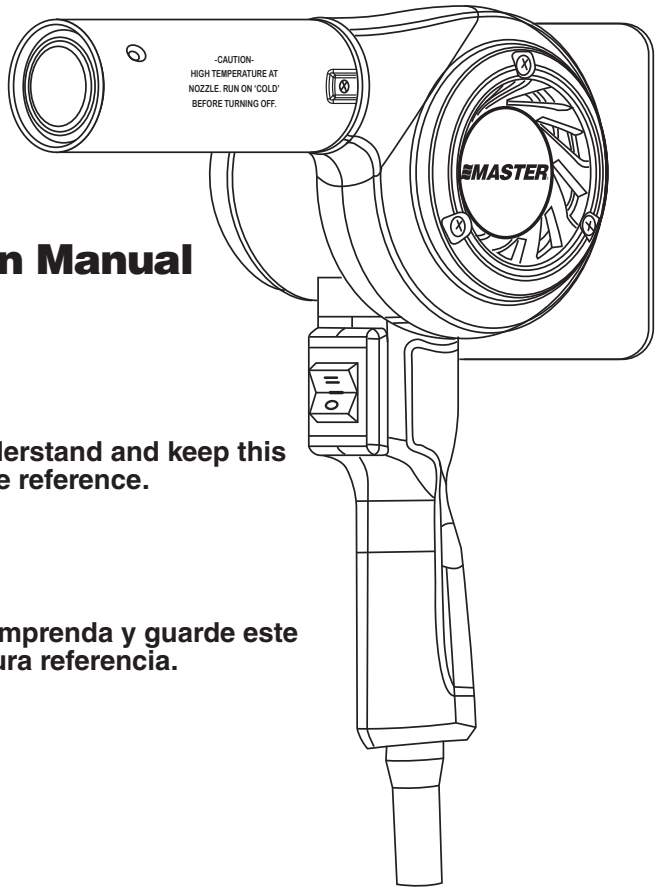


MASTER HEAT GUN®

MASTER VARITEMP®

HEAT GUN



Instruction Manual

Please read, understand and keep this manual for future reference.

Por favor lea, comprenda y guarde este manual para futura referencia.

Assembled in U.S.A. using foreign and domestic components

Important Safety Instructions

Our Master Heat Gun® and Master Varitemp® Heat Gun feature a heavy duty, industrial quality design, with industry leading heat and airflow, that gets any job done faster.

To reduce the risk of fire or explosion, electric shock and the injury to persons, read and understand all instruction included in this manual. Be familiar with the controls and proper usage of equipment.



Indicates a hazardous situation, if not avoided could result in death or serious injury. Important Safety Information • Read all safety information before operating equipment. Save these instructions.

IMPORTANT SAFETY INSTRUCTION

⚠ WARNING This heat gun produces extreme high temperatures (as high as 1400°F). It must be used with caution to prevent combustible materials from igniting.

- **With a heat gun, as with all other heat tools, keep a fire extinguisher handy** and observe all sensible fire precautions.
- **Keep gun in constant motion.** Do not stop or dwell in one spot.
- **Use extreme caution if the other side of the material being scraped is not accessible,** such as house siding. The hidden side could catch fire if it becomes too hot. Some buildings contain highly flammable materials behind siding, floors, fascia, soffit boards and other panels. Check these areas before applying heat and do not use a heat tool if flammable materials are present or if you are unsure of the hidden material.
- **Do not use near surfaces with cracks or near metal pipes or flashing.** Heat may be conducted behind the work surface and ignite hidden material. The ignition of hidden materials may not be readily apparent and can result in property damage and injury.
- **Do not use electric tool in the presences of flammable liquids or gases.**
- **Do not use near combustible materials** such as dry grass, leaves and paper which can scorch and catch fire.

- **The nozzle becomes very hot.** Do not lay the heat gun on flammable surfaces when operating the gun or immediately after shutting the gun off. Always set the heat gun on a flat surface so that the nozzle tip is directed upward and away from the supporting surface.
- **Do not touch the nozzle** until the tool has cooled.
- **Do not use the gun as a hair dryer.**
- **Tools and paint scrapings become very hot.** To avoid burns, use work gloves when scraping.
- **Always treat the hot air units with the same respect as an open flame.**
- **Do not work in wet areas or expose the heat gun to rain.**
- **Guard against electric shock by preventing body contact with grounded surfaces** such as pipes, radiators, ranges, aluminum ladders or other grounded devices.
- **Do not abuse the electric cord.** Never carry the heat gun by the cord or yank on the cord to disconnect it from the power supply. Keep the electric cord away from heat, oil and sharp edges.
- **Use extension cords rated for outdoor use.** If an extension cord is damaged or otherwise unsuitable for use, replace it with a new cord.
- **Disconnect heat gun from power supply when not in use.** Store indoors in a dry place and out of reach of children.

- **Keep work area well lighted and clean.**
- **Do not overreach, especially when working on ladders.** Keep proper footing and balance at all times. Be certain ladders being used are sturdy, stable and on a firm surface and erected at a safe working angles.
- **Avoid power lines**
- **Keep movable items secure and steady while scraping.**
- **Always use protective eyewear when working.**

PERSONS REMOVING PAINT SHOULD FOLLOW THESE GUIDELINES:

⚠ WARNING Extreme care should be taken when stripping paint. The peelings, residue and vapors of paint may contain lead, which is poisonous. Any paint applied before 1950 is likely to contain lead. Any paint manufactured before 1977 may contain lead. Once the paint is deposited on the surface, hand-to-mouth contact can result in the ingestion of lead. Exposure to even low levels of lead can cause irreversible brain and nervous system damage. Young unborn children are particularly vulnerable to lead poisoning.

Before beginning any paint removal process, you should determine whether the paint you are removing contains lead. This can be done by your local health department or by a professional who uses a paint analyzer to check the lead content of the paint to be removed. **LEAD-BASED PAINT SHOULD ONLY BE REMOVED BY A PROFESSIONAL AND SHOULD NOT BE REMOVED USING A HEAT GUN.**

⚠ WARNING This product when used for soldering and similar application, can expose you to LEAD, which is known to the State of California to cause cancer and birth defects and other reproductive harm.

- **Stay alert and use common sense when operating any tools.**
- **Use caution when operating the hot air gun.** Keep the hot air gun moving as excessive heat will generate fumes which can be inhaled by the operator.
- **Keep food and drink out of the work area.** Wash hands, arms and face and rinse mouth before eating or drinking. Do not smoke or chew gum or tobacco in the work area.
- **Move the work piece outdoors.** If this is not possible, keep the work area well ventilated. Open the windows and put an exhaust fan in one of them. Be sure the fan is moving the air from inside to outside.
- **Remove or cover any carpets, rugs, furniture, clothing, cooking utensils and air ducts.**
- **Place drop cloths in the work area to catch any paint chips or peelings.** Wear protective clothing such as extra work shirts, overalls and hats.
- **Work in one room at a time.** Furnishings should be removed or placed in the center of the room and covered. Work areas should be sealed off from the rest of the dwelling by sealing doorways with drop cloths.
- **Children, pregnant or potentially pregnant women and nursing mothers should not be present in the work area until the work is done and all cleanup is complete.**
- **Wear a dust respirator or a dual filter (dust and fume) respirator mask** which has been approved by the Occupational Safety and Health Administration (OSHA), the National Institute of Safety and Health (NIOSH), or the United States Bureau of Mines. These masks and replaceable filters are readily available at major hardware stores. Be sure the mask fits. Beards and facial hair may keep masks from sealing properly. Change filters often. **DISPOSABLE PAPER MASKS ARE NOT ADEQUATE.**



Important Safety Information • Read all safety information before operating equipment. Save these instructions

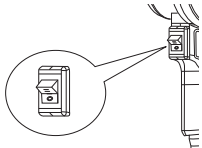
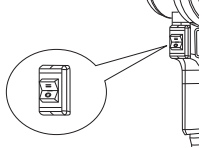
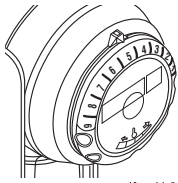
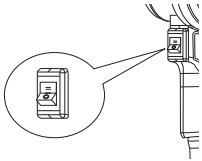
Important Safety Instructions

- Clean up all removed paint and dust by wet mopping the floors. Use a wet cloth to clean all walls, sills and any other surface where paint or dust is clinging. **DO NOT SWEEP, DRY DUST OR VACUUM.** Use a high phosphate detergent or trisodium phosphate (TSP) to wash and mop areas.
- At the end of each work session put the paint chips and debris in a double

- plastic bag, close it with tape or twist ties, and dispose of properly.
- Remove protective clothing and work shoes in the work area to avoid carrying dust into the rest of the dwelling. Wash work clothes separately. Wipe shoes off with a wet rag that is then washed with the work clothes. Wash hair and body thoroughly with soap and water.

TO OPERATE HEAT GUN

1. Plug heat gun into properly rated outlet.
2. Move rocker switch to "II" position. (VT Models, turn heat control to desired heat setting). Heat gun will come up to full operating temperature in approximately two minutes.
3. Adjustable stand is provided to allow nozzle to be rotated from almost horizontal to vertical position.
4. To turn heat gun off after use, move switch to "I" position. Run on cold for approximately three minutes. This will allow the heat gun to cool down and the nozzle to become cool to the touch.
5. Move switch to "O" position.



NOTICE: When heat gun is used in an enclosed container, such as a shrink tunnel or special enclosure, ambient air must be allowed to pass into the heat gun and there must be an outlet of equal size for the heated air to pass out of the enclosure also. Total enclosure will cause damage or possible failure to the heat gun due to the extreme heat generated.

WARNING - To Reduce The Risk Of Fire Or Electric Shock, Connect To Grounded Outlet. Do Not Expose To Rain Or Moisture. Store Indoors; Read Instruction Manual Before Using.

CAUTION - HIGH TEMPERATURE AT NOZZLE. RUN ON COLD BEFORE TURNING OFF.

CLEANING

Unplug heat gun before cleaning. To clean outside of tool, use only a mild soap and damp cloth. Do not use other cleaning agents, turpentine, gasoline, lacquer or paint thinner, or other solvents that may contain

chemicals which are harmful to plastics and other insulating materials. Never immerse tool in a liquid or allow a liquid to enter inside the tool. Make sure all vents and openings are free and clear of debris.

Repair and Maintenance Instructions

SPECIFICATIONS

Size 10" L x 5-1/4" W x 9-1/2" H
 Nozzle opening 1-3/16" dia.
 Nozzle shield length 4-7/8" L
 Average air velocity 3400 FPM at ambient

Average air volume . . . 27 CFM at ambient
 Net weight (with stand) 3.7 lbs. (D-models)
 2.8 lbs. (T-models)
 Cord Length6 Ft. L

Master Heat Gun®

Model	Temperature		Voltage	Amps	Watts	Replacement Element
	°F	°C				
HG-201D/T	400	204	120	5	600	30087
HG-301D/T	800	426	120	12	1440	30085
HG-501D/T	1200	649	120	14.5	1740	30083
HG-801D*	1400	760	120	18.5	2220	30082
HG-202D/T	400	204	220	3	660	30088
HG-302D/T	800	426	220	6	1320	30086
HG-502D/T	1200	649	220	9	1980	30084

* Required 20A outlet, equipped with NEMA 5-20P Plug



Master Varitemp® Heat Gun

Model	Temperature		Voltage	Amps	Watts	Replacement Element
	°F	°C				
VT-751D	100-1200	38-649	120	14.5	1740	30083
VT-752D	100-1200	38-649	220	9	1980	30084

REPAIR AND MAINTENANCE INSTRUCTIONS

All repairs and maintenance must be performed by a qualified repair technician who is experienced with the repair of electric tools, a qualified service organization, or Master Appliance Corp.'s Repair Department.

Please contact Master's Customer Service Department for genuine Master Appliance replacement parts or for repair service.

MASTER HEAT GUN® REPLACEMENT PARTS (HG/VT MODELS)

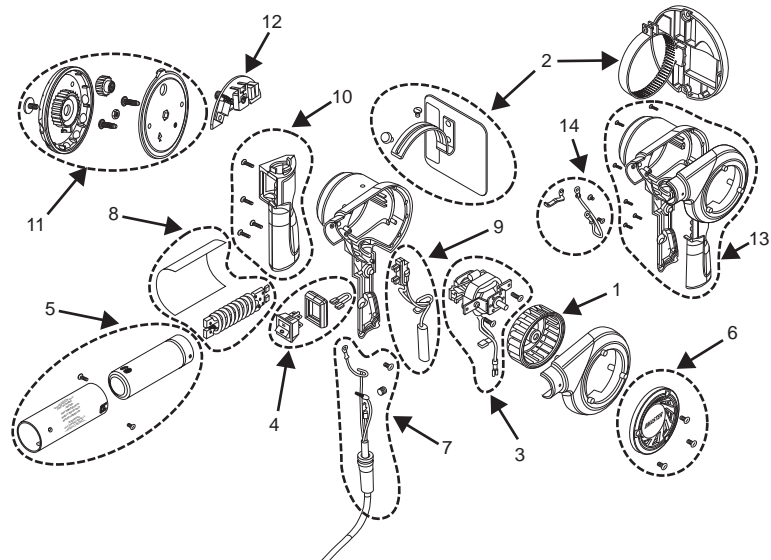
Master Heat Gun® replacement parts and accessories are engineered and manufactured to precise MASTER APPLIANCE specification. Replacement parts and accessories from other manufacturers are not produced to these precise specifications and therefore may

cause difficulties with or actually cause damage to your Master Heat Gun®. Master Appliance cannot assume responsibility or liability for difficulties or damage resulting from the use of any other brand of replacement parts or accessories with your Master Heat Gun®.

Important Safety Information • Read all safety information before operating equipment. Save these instructions

MASTER HEAT GUN® Replacement Parts (HG/VT Models)

Item No.	Part No.	Description
1	35153	Blower wheel
2	30071	Stand kit (D Models)
2	30072	Stand kit (T Models)
3	30073	Motor 120V
3	30074	Motor 220-240V
4	30075	Switch Bezel Kit (3 pos)
4	30076	Switch Bezel Kit (MC)
5	30077	Nozzle Shield Kit
6	30078	Grille Kit
7	30079	Cordset Kit 120V 15amp (-00)
7	30080	Cordset Kit 120V 20amp (-01)
7	30081	Cordset Kit 220V UL/CUL (-02)
8	30082	Element Kit, HG-801D (120V)
8	30083	Element Kit, HG-501D & T/VT-751D (120V)
8	30084	Element Kit, HG-502D / VT-752D (220V)
8	30085	Element Kit, HG-301D & T (120V)
8	30086	Element Kit, HG-302D (220V)
8	30087	Element Kit, HG-201D & T (120V)
8	30088	Element Kit, HG-202D & T (220V)
9	30089	Element Connector
9	30090	Element Connector 20 amp
10	30091	Handle Kit (D Models)
11	30092	VT- Knob Kit
12	30093	Circuit Board Kit VT-751D (120V)
12	30094	Circuit Board Kit VT-752D (220V)
13	30095	Housing Plastic (T Models)
14	30096	Grounding Kit (T Models)



Attachments

Model	51309 Pinpoint	30202 Solder Preform	51542 Glass Protector	A-160-HG A-170-HG Shrink Tube	51543 Spreader	51544 7/8 Reducer
HG-801D			•	•	•	•
HG-201D/T						
HG-301D/T						
HG-501D/T	•	•	•	•	•	•
HG-202D/T						
HG-302D/T						
HG-502D/T						
VT-751D	•	•	•	•	•	•
VT-752D						