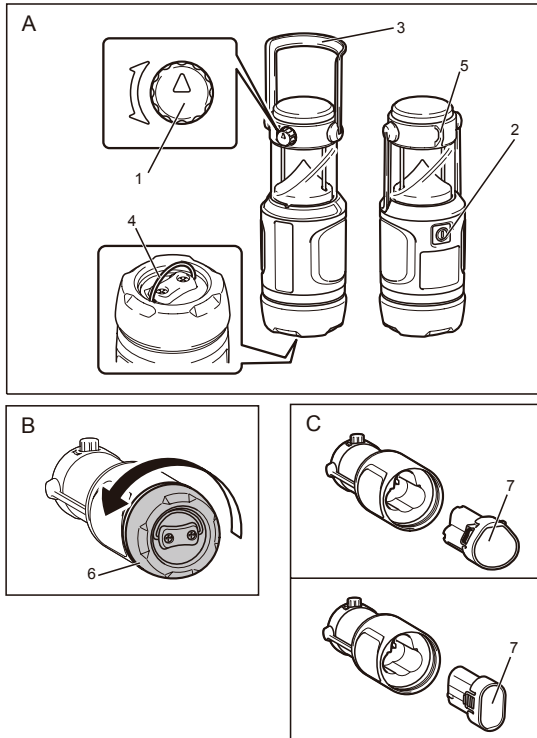




Rechargeable LED Lantern Instruction Manual

ML102



Specifications

Model	ML102	
Voltage	7.2V / 10.8V – 12V max	
LED	1.25 W	
Operating time	with battery BL7010	Approx. 4.5 hours
	with battery BL1014	Approx. 8 hours
Dimensions	φ2-9/16" (65 mm) x 7-1/8" (180 mm)	
Net weight	with battery BL7010	0.7 lbs (0.32 kg)
	with battery BL1014	0.9 lbs (0.38 kg)
Degree of protection against dust and water	IP54	

Symbols

The following show the symbols used for the equipment. Be sure that you understand their meaning before use.



• Read instruction manual.



• Indoor use only



• Only for EU countries
Do not dispose of electric equipment together with household waste material!
In observance of the European Directive, on Waste Electric and Electronic Equipment and its implementation in accordance with national law, electric equipment that have reached the end of their life must be collected separately and returned to an environmentally compatible recycling facility.



• Optical Radiation (UV and IR).
Minimize exposure to eyes or skin.



• Do not stare at operating lamp.



• Use appropriate shielding or eyes protection.



• Take particular care and attention!

IMPORTANT SAFETY INSTRUCTIONS

⚠ WARNING: When using electric tools, basic safety precautions should always be followed to reduce the risk of fire, electric shock, and personal injury, including the following:

READ ALL INSTRUCTIONS.

⚠ CAUTION:

- When the tool is not in use, always switch off and remove the battery cartridge from the tool.
- Do not cover or clog the lit tool with cloth or carton, etc. Covering or clogging it may cause a flame.
- This battery holder part is not waterproof. Do not use it in damp or wet locations. Do not expose it to rain or snow. Do not wash it in water.
- Do not use the tool in explosive atmospheres, such as in the presence of flammable liquids, gases or dust.
- Do not look in the LED light or see the source of light directly. The lamp was classified at risk Group 1.
 - The lamp or lamp system is in excess of the Exempt Group and that the viewer-related risk is dependent upon how the users install and use the product;
 - The most restrictive optical radiation hazard and other optical radiation hazards in excess of Exempt Group.
 - Proper assembly, installation, maintenance and safe use, including clear warnings concerning precautions to avoid possible exposure to hazardous optical radiation.
 - Advice on safe operation procedures and warnings concerning reasonably foreseeable malpractices, malfunctions and hazardous failure modes.
 - NOTICE: UV and IR emitted from this product.
 - WARNING: IR emitted from this product.
 - CAUTION: Possibly hazardous optical radiation emitted from this product.
 - Minimize exposure to eyes or skin. Use appropriate shielding.
 - Use appropriate shielding or eye protection.
 - Do not stare at operating lamp. May be harmful to the eyes.
 - Eye or skin irritation may result from exposure. Avoid eye exposure.

IMPORTANT SAFETY INSTRUCTIONS FOR BATTERY CARTRIDGE

- Before using battery cartridge, read all instructions and cautionary markings on (i) battery charger, (ii) battery, and (iii) product using battery.
- Do not disassemble battery cartridge.
- If operating time has become excessively shorter, stop operating immediately. It may result in a risk of overheating, possible burns and even an explosion.
- If electrolyte gets into your eyes, rinse them out with clear water and seek medical attention right away. It may result in loss of your eyesight.
- Do not short the battery cartridge:
 - Do not touch the terminals with any conductive material.
 - Avoid storing battery cartridge in a container with other metal objects such as nails, coins, etc.

- Do not expose battery cartridge to water or rain.
- A battery short can cause a large current flow, overheating, possible burns and even a breakdown.
- Do not store the tool and battery cartridge in locations where the temperature may reach or exceed 50°C (122°F).
- Do not incinerate the battery cartridge even if it is severely damaged or is completely worn out. The battery cartridge can explode in a fire.
- Be careful not to drop or strike battery.
- Do not use a damaged battery.
- Recharge only with the charger specified by the manufacturer. A charger that is suitable for one type of battery pack may create a risk of fire when used with another battery pack.

SAVE THESE INSTRUCTIONS.

Tips for maintaining maximum battery life

- Charge the battery cartridge before completely discharged. Always stop tool operation and charge the battery cartridge when you notice less tool power.
- Never recharge a fully charged battery cartridge. Overcharging shortens the battery service life.
- Charge the battery cartridge with room temperature at 10°C – 40°C (50°F – 104°F). Let a hot battery cartridge cool down before charging it.

INSTALLING OR REMOVING BATTERY

CARTRIDGE (Fig B, C)

To install the battery cartridge(7), turn and remove the battery cap(6). Insert the battery cartridge alongside the groove of the tool. Then return the battery cap securely.

BATTERY PROTECTION SYSTEM

The light automatically goes off during operation when the remaining battery capacity gets low. In this case, charge the battery.

LIGHTING UP THE LED LIGHT

To turn on, press the switch(2) once. To turn off, press the switch once again.

LANTERN OR FLASHLIGHT

To use the tool as a lantern, turn the knob(1) counterclockwise. Turn the knob clockwise when using the tool as a flashlight.

HANGING LANTERN

The tool equips upper hook(3), lower hook(4) and strap hole(5). Make use of them in accordance with the situation.

MAINTENANCE

⚠ CAUTION: Always be sure that the tool is switched off and the battery cartridge is removed before attempting to perform inspection or maintenance.

CLEANING

From time to time wipe off the outside (tool body) of the tool using a cloth dampened in soapy water.

⚠ CAUTION: Never use gasoline, benzene, thinner, alcohol or the like. Discoloration, deformation or cracks may result.

To maintain product SAFETY and RELIABILITY, repairs, any other maintenance or adjustment should be performed by Makita Authorized Service Centers, always using Makita replacement parts.