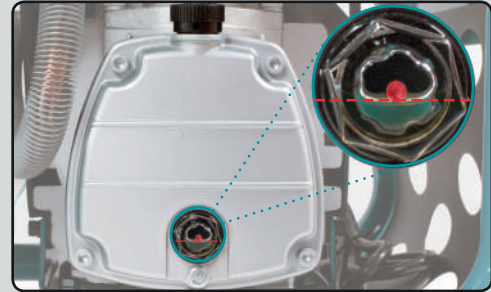




# QUICK START GUIDE

For protection, this compressor is shipped with a cap in place of the air filter, so discard this cap and install the air filter (MAC700 & MAC2400 models only).

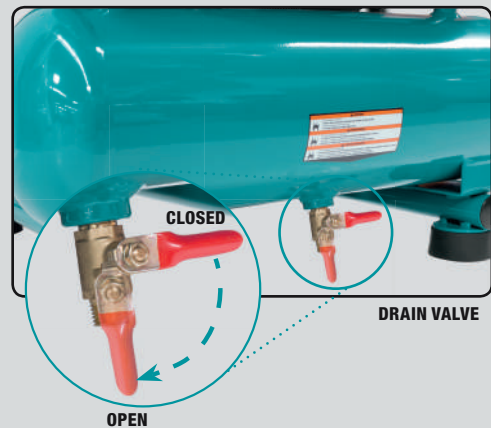
This unit is also shipped with a temporary cap in place of the oil cap. Please discard this as well, and fill your pump with oil up to the **RED** dot on the oil sight glass. Then proceed to install the oil cap included in the accessory bag.



OIL SIGHT GLASS

## FIRST USE BREAK-IN PROCEDURE

1. Open the air tank drain valve
2. Plug power supply cord into correct power source (the minimum requirement is 15 AMPS and a circuit breaker is recommended)
3. Turn the compressor **ON** by shifting the lever on the pressure switch to the **ON** position and run the compressor for twenty (20) minutes
4. Close the air tank drain valve

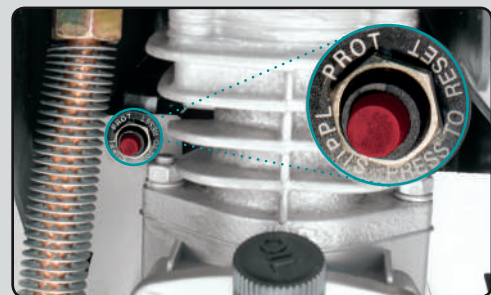


## YOUR COMPRESSOR IS NOW READY FOR OPERATIONAL USE

## OVERLOAD PROTECTION SWITCH

This compressor is protected by an **OVERLOAD PROTECTION SWITCH**. If the motor stops while the unit is set to **ON**:

1. Turn the compressor **OFF**
2. Wait for the motor to cool (60 or more seconds)
3. Press the **OVERLOAD PROTECTION SWITCH** (**RED** button located to left of pump under the shroud)
4. Turn the compressor **ON**



OVERLOAD PROTECTION SWITCH

## AVOID THE USE OF EXTENSION CORDS

Choose longer air hoses to reach fastening site

## ⚠ WARNING

Fill with air compressor oil before starting

SAE 10W for cold weather (3° - 32°F)

SAE 20W for warm weather (33° - 80°F) - sample included

**DO NOT USE MULTI-VISCOSITY MOTOR OILS LIKE 10W-30**

**READ OWNERS MANUAL FOR COMPLETE INSTRUCTIONS**

