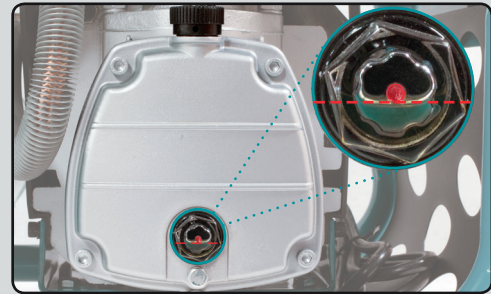




QUICK START GUIDE

For protection, this compressor is shipped with a cap in place of the air filter, so discard this cap and install the air filter (MAC700 & MAC2400 models only).

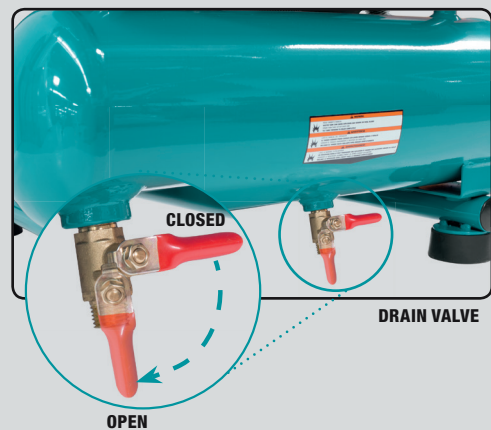
This unit is also shipped with a temporary cap in place of the oil cap. Please discard this as well, and fill your pump with oil up to the **RED** dot on the oil sight glass. Then proceed to install the oil cap included in the accessory bag.



OIL SIGHT GLASS

FIRST USE BREAK-IN PROCEDURE

1. Open the air tank drain valve
2. Plug power supply cord into correct power source (the minimum requirement is 15 AMPS and a circuit breaker is recommended)
3. Turn the compressor **ON** by shifting the lever on the pressure switch to the **ON** position and run the compressor for twenty (20) minutes
4. Close the air tank drain valve



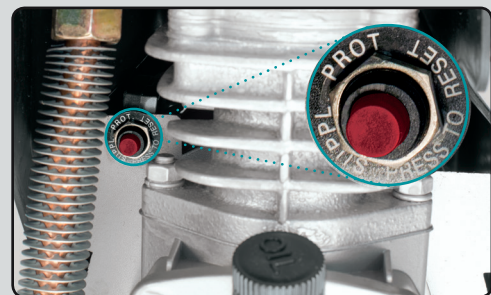
DRAIN VALVE

YOUR COMPRESSOR IS NOW READY FOR OPERATIONAL USE

OVERLOAD PROTECTION SWITCH

This compressor is protected by an **OVERLOAD PROTECTION SWITCH**. If the motor stops while the unit is set to **ON**:

1. Turn the compressor **OFF**
2. Wait for the motor to cool (60 or more seconds)
3. Press the **OVERLOAD PROTECTION SWITCH** (**RED** button located to left of pump under the shroud)
4. Turn the compressor **ON**



OVERLOAD PROTECTION SWITCH

AVOID THE USE OF EXTENSION CORDS

Choose longer air hoses to reach fastening site

⚠ WARNING

Fill with air compressor oil before starting

SAE 10W for cold weather (3° - 32°F)

SAE 20W for warm weather (33° - 80°F) - sample included

DO NOT USE MULTI-VISCOSITY MOTOR OILS LIKE 10W-30

READ OWNERS MANUAL FOR COMPLETE INSTRUCTIONS

