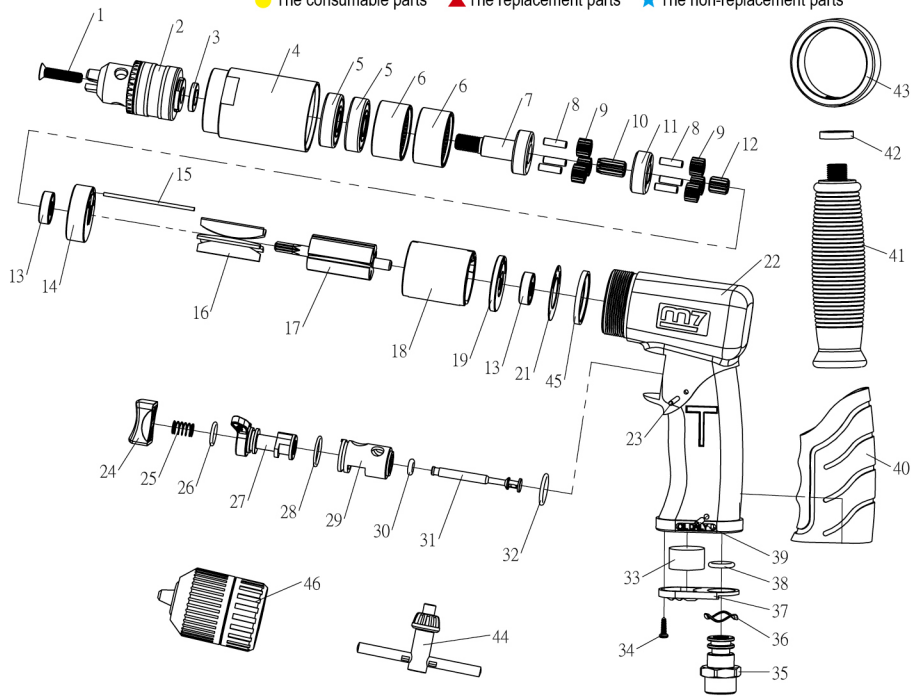




1/2" AIR REVERSIBLE DRILL

Item No : QE-841 / 843

● The consumable parts ▲ The replacement parts ★ The non-replacement parts



Part List Item No : QE-841/843



NO.	INDEX NO.	DESCRIPTION.	Q'TY	NO.	INDEX NO.	DESCRIPTION.	Q'TY
★	1	QE-843P01 Chuck Screw	1	★	24	QE-843P24 Trigger	1
●	2	QE-843P02 Drill Chuck (1/2")	1	★	25	QE-843P25 Spring	1
★	3	QE-843P03 Chuck Spacer	1	▲	26	QE-843P26 O-Ring (ψ10.82×1.78)	1
★	4	QE-843P04 Clamp Nut	1	★	27	QE-843P27 Reverse Valve	1
▲	5	QE-843T05 Ball Bearing (6201ZZ) (2 pcs)	1 set	▲	28	QE-843P28 O-Ring (ψ15.5×1.5)	1
★	6	QE-843T06 Internal Gear (2 pcs)	1 set	★	29	QE-843P29 Reverse Valve Bush	1
●	7	QE-843P07 Work Spindle	1	▲	30	QE-843P30 O-Ring (ψ4.42×2.62)	1
●	8	QE-843T08 Needle Roller (ψ4×13.8) (6 pcs)	1 set	★	31	QE-843P31 Throttle Valve	1
●	9	QE-843T09 Idler Gear (6 pcs)	1 set	▲	32	QE-843P32 O-Ring (ψ15×2)	1
●	10	QE-843P10 Reduction Gear	1	●	33	QE-843P33 Muffler	1
●	11	QE-843P11 Reduction Spindle	1	★	34	QE-843P34 Taping Screw (ψ3×10)	1
●	12	QE-843P12 Pinion Gear	1	★	35	QE-843P35 Air Inlet	1
▲	13	QE-843T13 Bearing (2 pcs)	1 set	★	36	QE-843P36 Wave Washer	1
▲	14	QE-843P14 Front Plate	1	★	37	QE-843P37 Exhaust Diffuser	1
★	15	QE-843P15 Pin (ψ2×55)	1	▲	38	QE-843P38 O-Ring (ψ10.8×2.4)	1
●	16	QE-843T16 Rotor Blade (5 pcs)	1 set	★	39	QE-843P39 Pin (ψ3×22.8)	1
★	17	QE-843P17 Rotor	1	★	40	QE-843P40 Cover	1
★	18	QE-843P18 Cylinder	1	★	41	QE-843P41 Hand Handle	1
▲	19	QE-843P19 End Plate	1	★	42	QE-843P42 Rubber Gasket	1
★	21	QE-843P21 Cylinder Washer	1	★	43	QE-843P43 Clamp Ring	1
★	22	QE-843P22 Housing	1	★	44	QE-843P44 Key (1/2")	1
★	23	QE-843P23 Pin (ψ2.5×26.8)	1	★	45	QE-843P45 Ring	1
●	46	QE-841P46 Keyless chuck (1/2")	1				