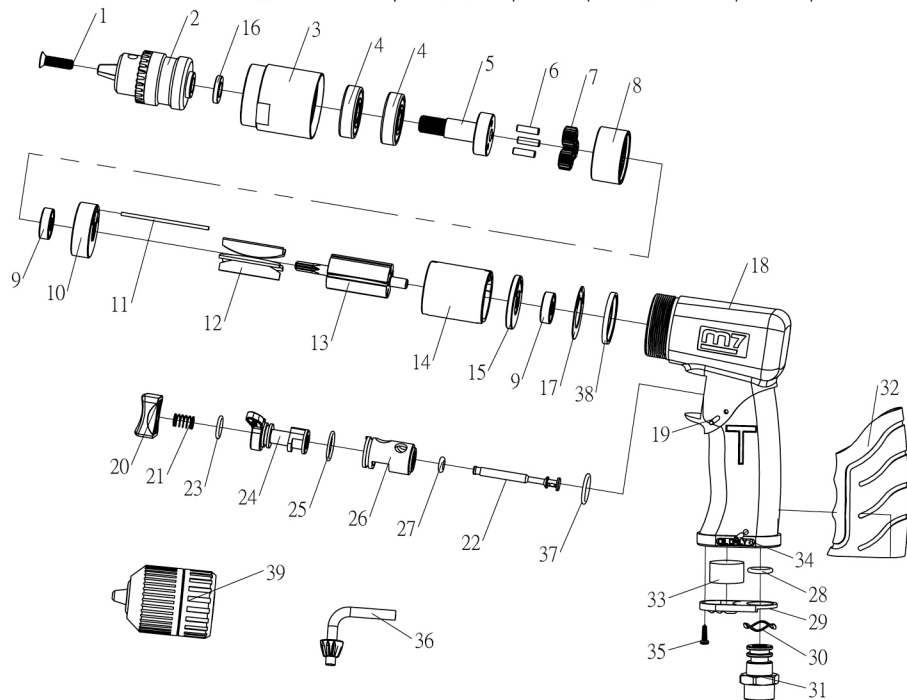




3/8" AIR REVERSIBLE DRILL

Item No : QE-831 / 833

● The consumable parts ▲ The replacement parts ★ The non-replacement parts



Part List

Item No : QE-831 / 833



	NO.	INDEX NO.	DESCRIPTION	Q'TY
★	1	QE-831P01	Screw(M5x20)	1
●	2	QE-833P02	Key Chuck (3/8")	1
★	3	QE-831P03	Gear Housing	1
▲	4	QE-831T04	Bearing (2PCS)	1 set
●	5	QE-831P05	Work Spindle	1
●	6	QE-831T06	Pin(Φ4x13.8) (3PCS)	1 set
●	7	QE-831T07	Planet Gear (3PCS)	1 set
★	8	QE-831P08	Internal Gear	1
▲	9	QE-831T09	Bearing (2PCS)	1 set
▲	10	QE-831P10	Front Plate	1
★	11	QE-831P11	Pin(Φ2x55)	1
●	12	QE-831T12	Rotor Blade (5PCS)	1 set
★	13	QE-831P13	Rotor	1
★	14	QE-831P14	Cylinder	1
▲	15	QE-831P15	End Plate	1
★	16	QE-831P16	Chuck Spacer	1
★	17	QE-831P17	Cylinder Washer	1
★	18	QE-831P18	Housing	1
★	19	QE-831P19	Pin(Φ2.5x26.8)	1
★	20	QE-831P20	Trigger	1

	NO.	INDEX NO.	DESCRIPTION	Q'TY
★	21	QE-831P21	Spring	1
★	22	QE-831P22	Throttle Valve	1
▲	23	QE-831P23	O-Ring(Φ10.82x1.78)	1
★	24	QE-831P24	Reverse Valve	1
★	25	QE-831P25	O-Ring(Φ15.5x1.5)	1
★	26	QE-831P26	Reverse Valve Bush	1
▲	27	QE-831P27	O-Ring(Φ4.42x2.62)	1
▲	28	QE-831P28	O-Ring(Φ10.8x2.4)	1
★	29	QE-831P29	Exhaust Diffuser	1
★	30	QE-831P30	Wave Washer	1
★	31	QE-831P31	Air Inlet	1
★	32	QE-831P32	Cover	1
●	33	QE-831P33	Muffler	1
★	34	QE-831P34	Pin(Φ3x22.8)	1
★	35	QE-831P35	Taping Screw(Φ3x10)	1
★	36	QE-833P36	key	1
▲	37	QE-831P37	O-Ring(Φ15x2)	1
★	38	QE-831P38	Ring	1
●	39	QE-831P39	3/8" Keyless Chuck	1