

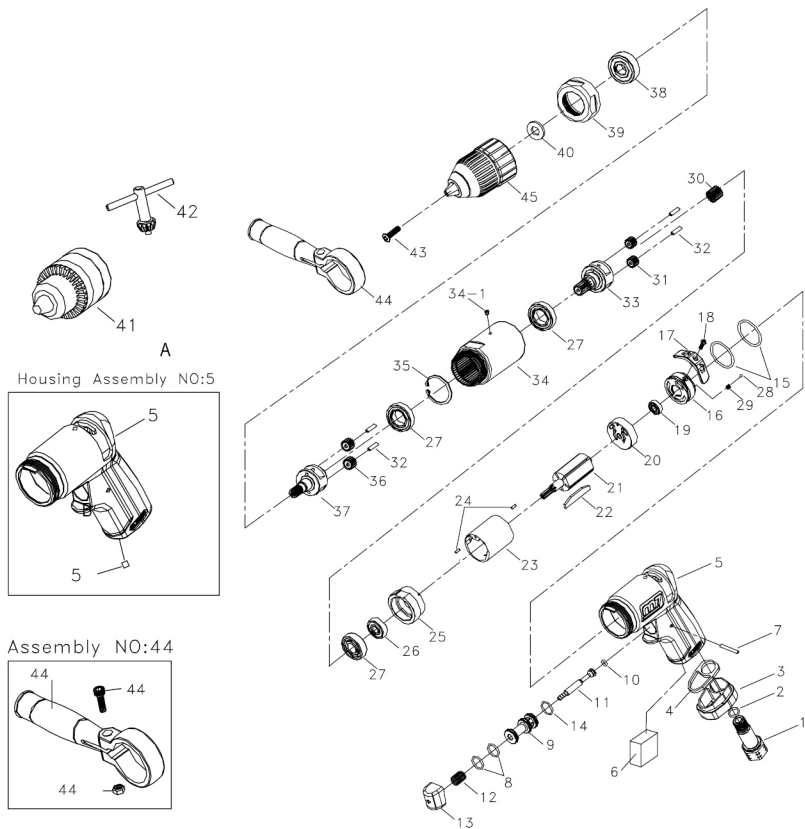


Air Reversible Drill

Item No : QE-441 QE-443



● The consumable parts ▲ The replacement parts ★ The non-replacement parts



Part List QE-441 QE-443

	NO.	INDEX NO.	DESCRIPTION	Q'TY
★	01	QE-441P01	Air Inlet	1
★	02	QE-441P02	O-Ring	1
★	03	QE-441P03	Exhaust Deflector	1
★	04	QE-441P04	Washer	1
★	05	QE-441T05	Housing Assembly (05A,05B)	1SET
★	05A	-	Motor Housing	1
★	05B	-	Steel Ball	1
●	06	QE-441P06	Muffler Element	1
★	07	QE-441P07	Pin	1
●	08	QE-441T08	O-Ring (2pcs)	1SET
★	09	QE-441P09	Throttle Valve Seat	1
★	10	QE-441P10	O-Ring	1
★	11	QE-441P11	Throttle Valve Plunger	1
★	12	QE-441P12	Spring	1
★	13	QE-441P13	Trigger	1
★	14	QE-441P14	O-Ring	1
★	15	QE-441T15	O-Ring (2pcs)	1SET
★	16	QE-441P16	Reverse Valve	1
★	17	QE-441P17	Reverse Valve Knob	1
★	18	QE-441P18	Screw	1
▲	19	QE-441P19	Ball Bearing	1
▲	20	QE-441P20	Rear End Plate	1
▲	21	QE-441P21	Rotor	1
●	22	QE-441T22	Rotor Blade (5pcs)	1SET
▲	23	QE-441P23	Cylinder	1
▲	24	QE-441T24	Spring Pin (2pcs)	1SET

	NO.	INDEX NO.	DESCRIPTION	Q'TY
▲	25	QE-441P25	Front End Plate	1
▲	26	QE-441P26	Ball Bearing	1
★	27	QE-441T27	Ball Bearing (3pcs)	1SET
★	28	QE-441P28	Steel Ball	1
★	29	QE-441P29	Spring	1
●	30	QE-441P30	Main Gear	1
●	31	QE-441T31	Planet Gear (2pcs)	1SET
●	32	QE-441T32	Pin (4pcs)	1SET
▲	33	QE-441P33	Work Spindle	1
★	34	QE-441T34	Gear Housing Assembly (34,34A)	1SET
★	34A	-	Grease Fitting	1
★	35	QE-441P35	Retainer	1
★	36	QE-441T36	Planet Gear (2pcs)	1SET
●	37	QE-441P37	Work Spindle	1
▲	38	QE-441P38	Ball Bearing	1
★	39	QE-441P39	End Cap	1
★	40	QE-441P40	Washer	1
★	41	QE-443P41	Key Chuck (for QE443)	1
★	42	QE-443P42	Chuck Key	1
●	43	QE-441P43	Screw	1
★	44	QE-441T44	Handle Assembly (44A,44B,44C)	1SET
★	44A	-	Handle	1
★	44B	-	Screw	1
★	44C	-	Lock Nut	1
●	45	QE-441P45	Keyless Chuck (for QE441)	1