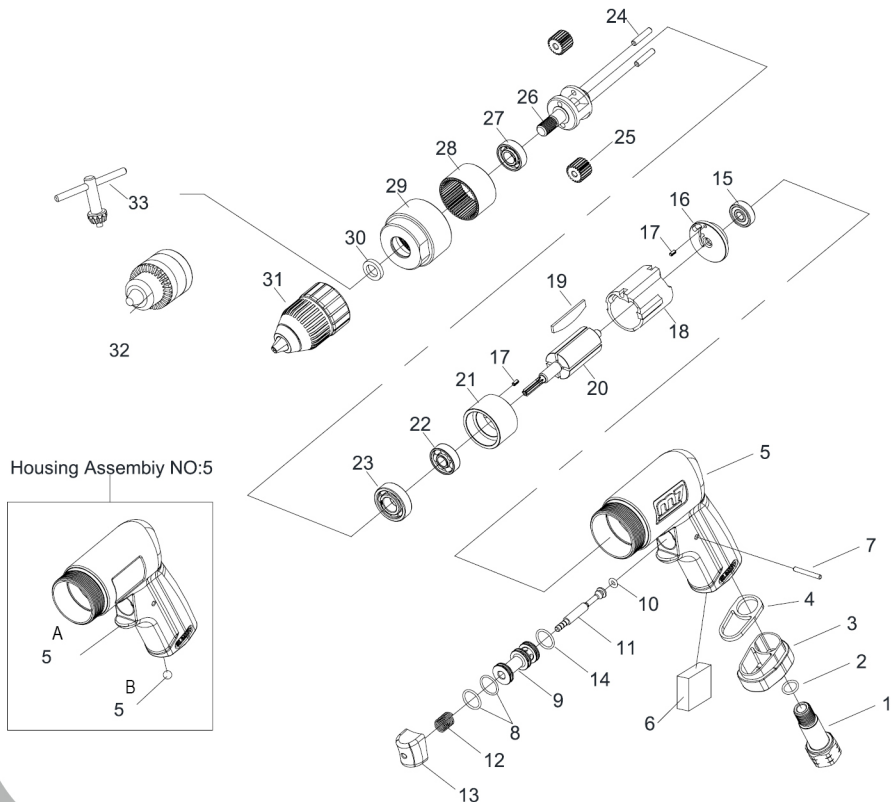




3/8" AIR DRILL

Item No : QE-432/434

● The consumable parts ▲ The replacement parts ★ The non-replacement parts



Part List

Item No : QE-432/434



	NO.	INDEX NO.	DESCRIPTION	Q'TY
★	01	QE-432P01	Air Inlet	1
★	02	QE-432P02	O-Ring	1
★	03	QE-432P03	Exhaust Deflector	1
●	04	QE-432P04	Washer	1
★	05	QE-432T05	Housing Assembly (05A.05B)	1SET
★	05A	-	Motor Housing	1
★	05B	-	Steel Ball	1
●	06	QE-432P06	Muffler Element	1
★	07	QE-432P07	Pin	1
★	08	QE-432T08	O-Ring (2pcs)	1SET
★	09	QE-432P09	Throttle Valve Seat	1
★	10	QE-432P10	O-Ring	1
★	11	QE-432P11	Throttle Valve Plunger	1
★	12	QE-432P12	Spring	1
★	13	QE-432P13	Trigger	1
★	14	QE-432P14	O-Ring	1
●	15	QE-432P15	Ball Bearing	1
▲	16	QE-432P16	Rear End Plate	1

	NO.	INDEX NO.	DESCRIPTION	Q'TY
★	17	QE-432T17	Spring Pin (2pcs)	1SET
★	18	QE-432P18	Cylinder	1
●	19	QE-432T19	Rotor Blade (4pcs)	1SET
★	20	QE-432P20	Rotor	1
▲	21	QE-432P21	Front End Plate	1
●	22	QE-432P22	Ball Bearing	1
▲	23	QE-432P23	Ball Bearing	1
▲	24	QE-432T24	Pin (2pcs)	1SET
▲	25	QE-432T25	Planet Gear (2pcs)	1SET
▲	26	QE-432P26	Work Spinder	1
▲	27	QE-432P27	Ball Bearing	1
▲	28	QE-432P28	Ring Gear	1
★	29	QE-432P29	Coupling Nut	1
★	30	QE-432P30	Washer	1
●	31	QE-432P31	Keyless Chuck (for QE432)	1
★	32	QE-434P32	Key Chuck (for QE434)	1
★	33	QE-434P33	Chuck Key	1