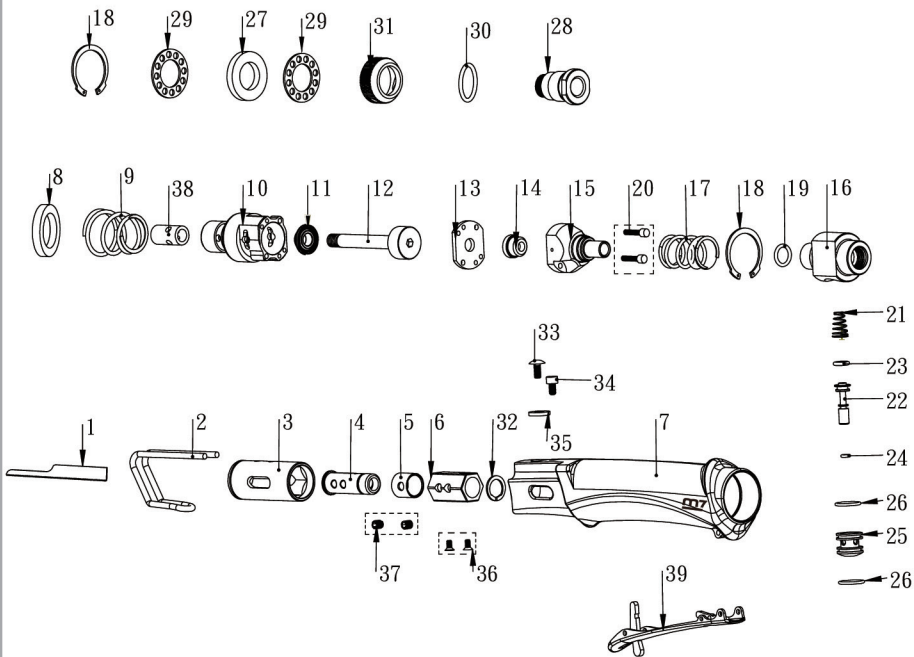




Air Saw

Item No : QD-321

● The consumable parts ▲ The replacement parts ★ The non-replacement parts



Part List

Item No : QD-321



	NO.	INDEX NO.	DESCRIPTION	Q'TY
●	1	QD-321P01	Saw (32T)	1
★	2	QD-321P02	Depth Regulator	1
★	3	---	Hexagon Socket	1
●	4	QD-321T04	Blade Chuck(4.5.6.32.36.37)	1 SET
●	5	---	Casing	1
●	6	---	Hexagon Rail	1
★	7	QD-321T07	Housing(3.7.33.34.35)	1 SET
●	8	QD-321P08	Oil Seal	1
▲	9	QD-321P09	Valve Spring	1
●	10	QD-321T10	Cylinder(10.11.12.38)	1 SET
●	11	---	Rear Bumped	1
●	12	---	Piston Stem	1
●	13	QD-321P13	Cylinder Gasket	1
▲	14	---	Sliding Plug	1
▲	15	QD-321T15	Rear Intake(14.15.20)	1 SET
●	16	QD-321T16	Block ntake (16.19.21.22.23.24.25.26)	1 SET
▲	17	QD-321P17	Spring	1
★	18	QD-321T18	Retainer Ring (2 pcs)	1 SET
●	19	---	O-Ring	1
▲	20	---	Screw (2 pcs)	1 SET

	NO.	INDEX NO.	DESCRIPTION	Q'TY
●	21	---	Spring	1
●	22	---	Valve Stem	1
●	23	---	O-Ring	1
●	24	---	O-Ring	1
●	25	---	Copper Sleeve	1
●	26	---	O-Ring (2 pcs)	1 SET
★	27	QD-321P27	Muffler	1
▲	28	QD-321T28	Tailstock(28.30)	1 SET
★	29	QD-321T29	Muffie (2 pcs)	1 SET
▲	30	---	O-Ring	1
▲	31	QD-321P31	Exhaust Hood	1
●	32	---	Regulator Ring	1
★	33	---	Regulator Screw	1
★	34	---	Screw	1
★	35	---	Washer	1
●	36	---	Screw (2 pcs)	1 SET
★	37	---	Screw (2 pcs)	1 SET
●	38	---	Copper Sleeve	1
▲	39	QD-321P39	Throttle Lever	1

[View other air cutting tools made by M7 on our website.](#)