

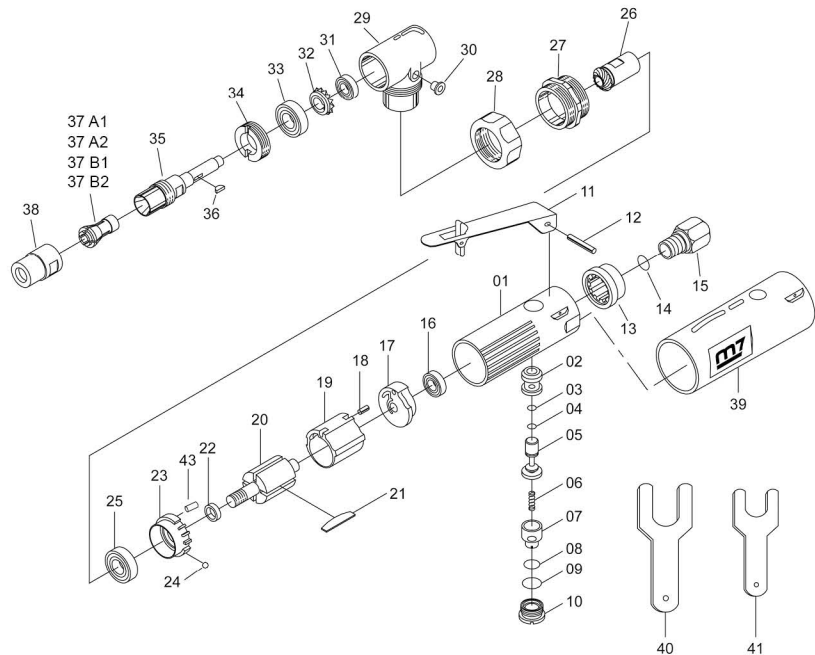


# 1/4" Angle Head Die Grinder

Item No : QA-611



● The consumable parts ▲ The replacement parts ★ The non-replacement parts



## Part List QA-611

	NO.	PART NO.	DESCRIPTION	Q'TY
★	1	QA-611P01	Motor Housing	1
★	2	QA-611P02	Throttle Bushing	1
▲	3	QA-611P03	O-Ring	1
▲	4	QA-611P04	O-Ring	1
★	5	QA-611P05	Valve Stem	1
★	6	QA-611P06	Spring	1
★	7	QA-611P07	Regulator	1
▲	8	QA-611P08	O-Ring	1
▲	9	QA-611P09	O-Ring	1
★	10	QA-611P10	Throttle Valve Plug	1
★	11	QA-611P11	Throttle Lever	1
★	12	QA-611P12	Spring Pin	1
★	13	QA-611P13	Exhaust Plate	1
▲	14	QA-611P14	O-Ring	1
★	15	QA-611P15	Air Inlet Bushing	1
▲	16	QA-611P16	Ball Bearing	1
▲	17	---	Rear End Plate	1
▲	18	---	Spring Pin	1
★	19	QA-611P19	Cylinder	1
★	20	QA-611P20	Rotor	1
●	21	QA-611T21	Rotor Blade (4pcs)	1Set
★	22	QA-611P22	Rotor Collar	1
▲	23	---	Front End Plate	1
▲	24	---	Steel Ball	1
▲	25	QA-611P25	Ball Bearing	1
●	26	QA-611P26	Driving Gear Spindle	1
★	27	QA-611P27	Motor Clamp	1

	NO.	PART NO.	DESCRIPTION	Q'TY
★	28	QA-611P28	Clamp Nut	1
★	29	---	Transmission Housing	1
★	30	---	Grease Inlet	1
●	31	---	Ball Bearing	1
●	32	---	Bevel Gear	1
●	33	---	Ball Bearing	1
★	34	QA-611P34	Clamp Nut	1
●	35	---	Working Spindle	1
●	36	---	Woodruff Key	1
●	37A1	QA-611P37A1	Collet 3 mm	1
●	37A2	QA-611P37A2	Collet 6 mm	1
●	37B1	QA-611P37B1	Collet 1/8"	1
●	37B2	QA-611P37B2	Collet 1/4"	1
★	38	QA-611P38	Collet Nut	1
★	39	QA-611P39	Grip	1
★	40	QA-611P40	17 mm Spanner Wrench	1
★	41	QA-611P41	11 mm Spanner Wrench	1
▲	43	---	Pin	1
▲		QA-611T01	Rear End Plate Ass'y (17.18)	1Set
▲		QA-611T02	Front End Plate Ass'y (23.24.43)	1Set
★		QA-611T03	Angle Head Housing Ass'y (29.30)	1Set
●		QA-611T04	Spindle Ass'y (31.32.33.35.36)	1Set

Discover other pneumatic grinders on our website.