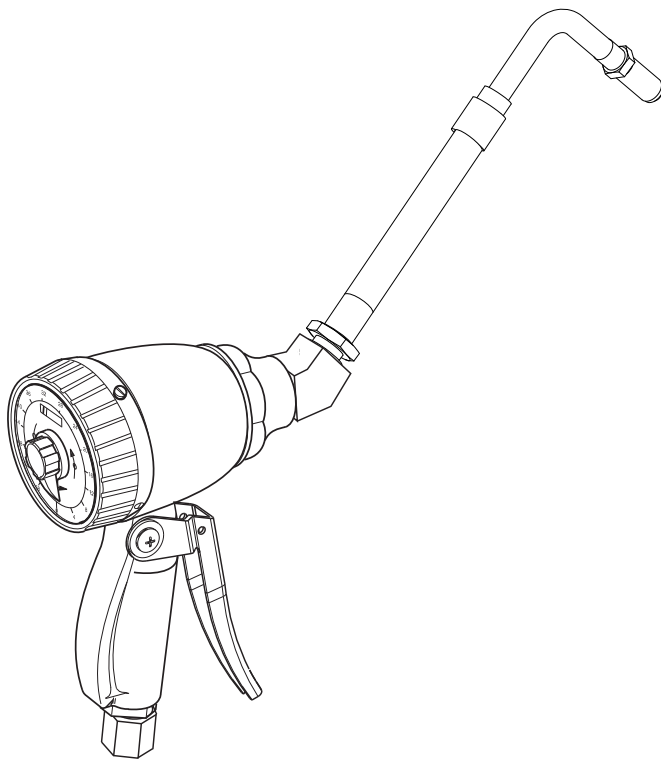


# Metering control valve

Model 881, series "B"



Date of issue	December 2014
Form number	404132B
Section	F22
Page	25B

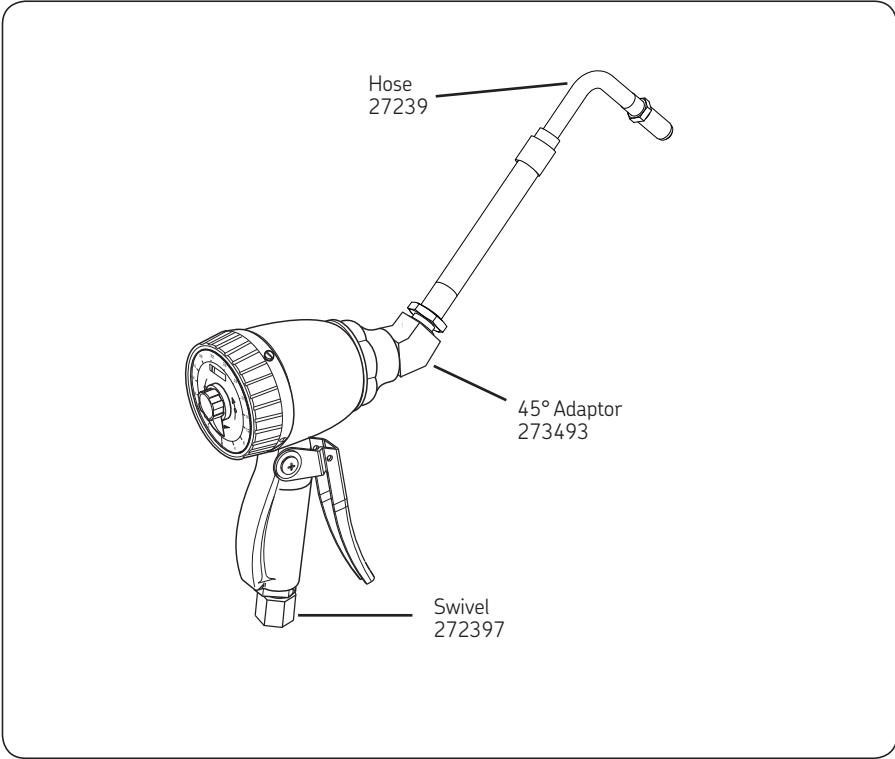
**⚠ DANGER**

Read manual prior to installation or use of this product. Keep manual nearby for future reference. Failure to follow instructions and safety precautions may result in death or serious injury.

# Operation

The meter can handle petroleum products such as automatic transmission fluid, S.A.E. 5 to 50 weight motor oil, S.A.E. 80 to 240 weight gear oil and antifreeze fluid (ethylene glycol).

The meter can be locked in the on position by engaging the trigger lock, to release the lock the trigger must be depressed thus releasing the lock. Before each use reset the meter by rotating the indicator knob counterclockwise to zero.



**! Notice** Systems which will be dispensing fluids under pressure may need to be protected by using a thermal relief kit which will safely limit pressures caused by thermal expansion.  
 Contact your local Lincoln distributor and refer to section K5, page 31 for more details.  
 Failure to include thermal relief protection may cause damage not covered under Lincoln's warranty policy.

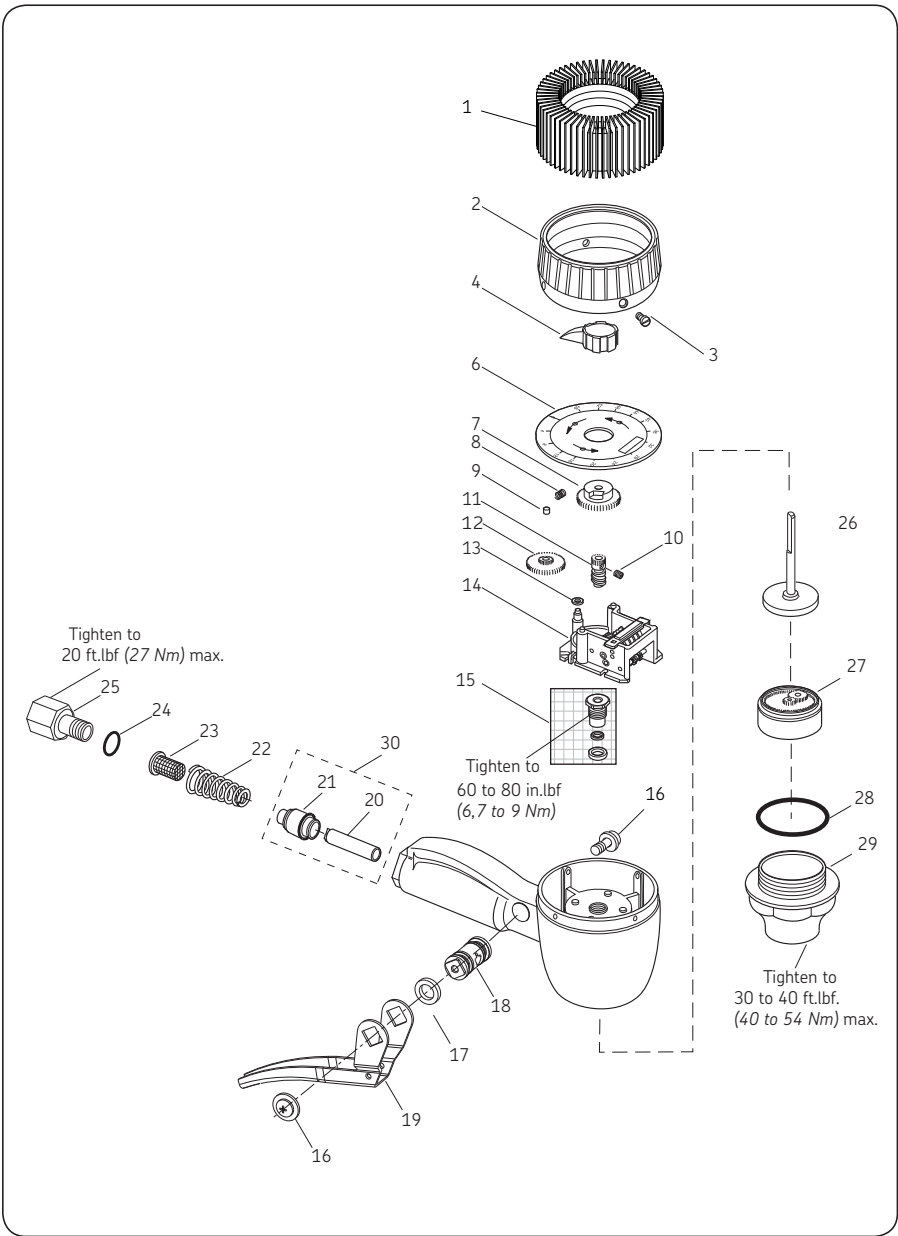
**! Notice** Before meter can be placed in service "after repair", meter must be tested and approved in accordance with U.S. Government's Weights and Measures Standards.

**! Notice** New metering systems must be purged prior to installation of metering control valve to free system of contaminants.

**Specifications**

Dial capacity	0.26 to 4 gal. (1-10 l)
Totalizer	Gallons/Liters
Flow maximum	4 gal./min. (15 l/min.)
Flow minimum	0.4 gal./min. (1.5 l/min.)
Operating pressure maximum	1,000 PSI (70 bar)
Operating temperature maximum.	110° F (45° C)
Accuracy	+/- 0.65%
Weight	3.3 Lbs. (1.5 Kg.)
Meter inlet threads	1/2 NPT

**Notice**  
**Do not turn pointer in a clockwise direction as this will damage meter.**  
 The pointer can only be returned to the zero stop in a counterclockwise direction after delivery.



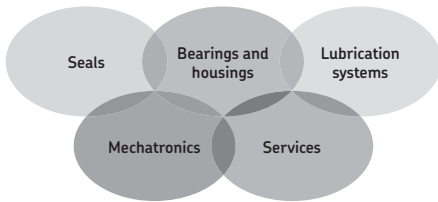
**Service parts 881**

Item	Description	Part no.	Item	Description	Part no.	Item	Description	Part no.
1	Shroud protector	242911 <sup>1)</sup>	11	Upper driving pawl worm gear	273372	21	Valve seat assembly <sup>2)</sup>	
2	Shroud	68410-12	12	Inner circle pointer gear	273373	22	Spring	69304-3
3	Shroud screw (qty. 4)	66871 -5	13	Spacer	69304-23	23	Screen	68410-27
4	Knob assembly	242912	14	Register assembly	69795-3	24	O-ring	243176
5	Inner circle pointer	66871-53	15	Packing kit	237388	25	Adapter	273357
6	Dial assembly	273371	16	Screw (qty. 2)	68410-2	26	Upper driving pawl gear assembly	66871-111
7	Inner circle pointer cam	66871-50	17	Cam	68410-5	27	Chamber and piston assembly	68410-15
8	Clutch spring	66871-3	18	O-ring (qty. 2)	68410-4	28	Housing cap gasket	66871-12
9	Clutch roller	66871-4	19	Valve trigger assembly	68410-1	29	Housing cap	68410-14
10	Set screw	50541	20	Valve sleeve assembly <sup>2)</sup>		30	Valve Assembly (Buna-N)	271700

<sup>1)</sup> May be purchased separately  
<sup>2)</sup> See valve assembly item 30

## Troubleshooting

Problem	Solution
No material flow	Check pump Check air supply Check for obstruction in supply hose Check screens.
Leaking at handle trigger assembly	Check the o-rings on the cam. Check flow rate and meter pressure
Partial material flow	Check screens
Leaks after shut-off	Check valve seat assembly in handle for foreign particles obstructing seating of valve. Faulty nozzle
Material flowing, odometer not registering and meter indicator turning	Check for broken odometer gears
Oil leakage in odometer	Check gland packing
Material flowing odometer not registering and metering indicator not turning	Check piston and chamber for foreign particles. Check reset knob is tight on shaft of driver pawl gear
Material flowing, odometer registering and meter indicator not turning	Check set screw on indicator Check stem on upper driver gear to ensure note loose from gear body
Pre-set only, no auto shut-off	Check lock pawl not bent and by-passing indicator



### **The Power of Knowledge Engineering**

Combining products, people, and application-specific knowledge, SKF delivers innovative solutions to equipment manufacturers and production facilities in every major industry worldwide. Having expertise in multiple competence areas supports SKF Life Cycle Management, a proven approach to improving equipment reliability, optimizing operational and energy efficiency and reducing total cost of ownership.

These competence areas include bearings and units, seals, lubrication systems, mechatronics, and a wide range of services, from 3-D computer modelling to cloud-based condition monitoring and asset management services.

SKF's global footprint provides SKF customers with uniform quality standards and worldwide product availability. Our local presence provides direct access to the experience, knowledge and ingenuity of SKF people.

