

SPECIFICATIONS	84432	84433
Hose I.D. & Length	-	1" x 50"
Working Pressure	500 P.S.I.	250 P.S.I.
Max. Temperature	210°F	150°F

⚠ WARNING

Systems which will be dispensing fluids under pressure may need to be protected by using a thermal relief kit, which will safely limit the pressures caused by thermal expansion. Please contact your local Lincoln distributor and refer to Service Page Section K5, Page 31 for more details. Failure to include thermal relief protection may cause damage not covered under Lincoln's warranty policy.

FOUR 7/16" DIAMETER MOUNTING HOLES

INSTRUCTIONS

Installation

The swivel union is packed separately in the reel carton, use teflon tape to assure a satisfactory seal. A flexible hose connection must be used between the hose reel inlet and the source of supply to prevent possible misalignment and binding. Non flexible connections **will void the warranty**. Pressure rating of inlet hose must be equal to or more than the pressure rating of the reel. ©Reels should not be hung higher than 16' from the floor. ©Mount reel to rigid mounting surface, not flexible wall or surface.

Lubrication

Hose reel spring and bearings are packed with grease and require no further lubrication.

Replacing Hose for Maximum Spring Tension

1. Wind spool flange clockwise (facing swivel) until spring is tight
2. **Back off three turns and latch.**
3. Insert hose through roller guide.
4. Connect hose fitting to female outlet ell.

Adjustments

Suggested adjustments for 50' or 75' of 1/2" hose are at least 21 turns of spool flange. Suggested adjustments for 100' of 1/2" hose are at least 23 turns of spool flange.

Repairs

Extensive repairs should be performed only by an authorized serviceman or factory to avoid damage which may void your warranty. Remove all spring tension before beginning disassembly process.

Modifications

Hose latching mechanism can be removed for constant tension applications.

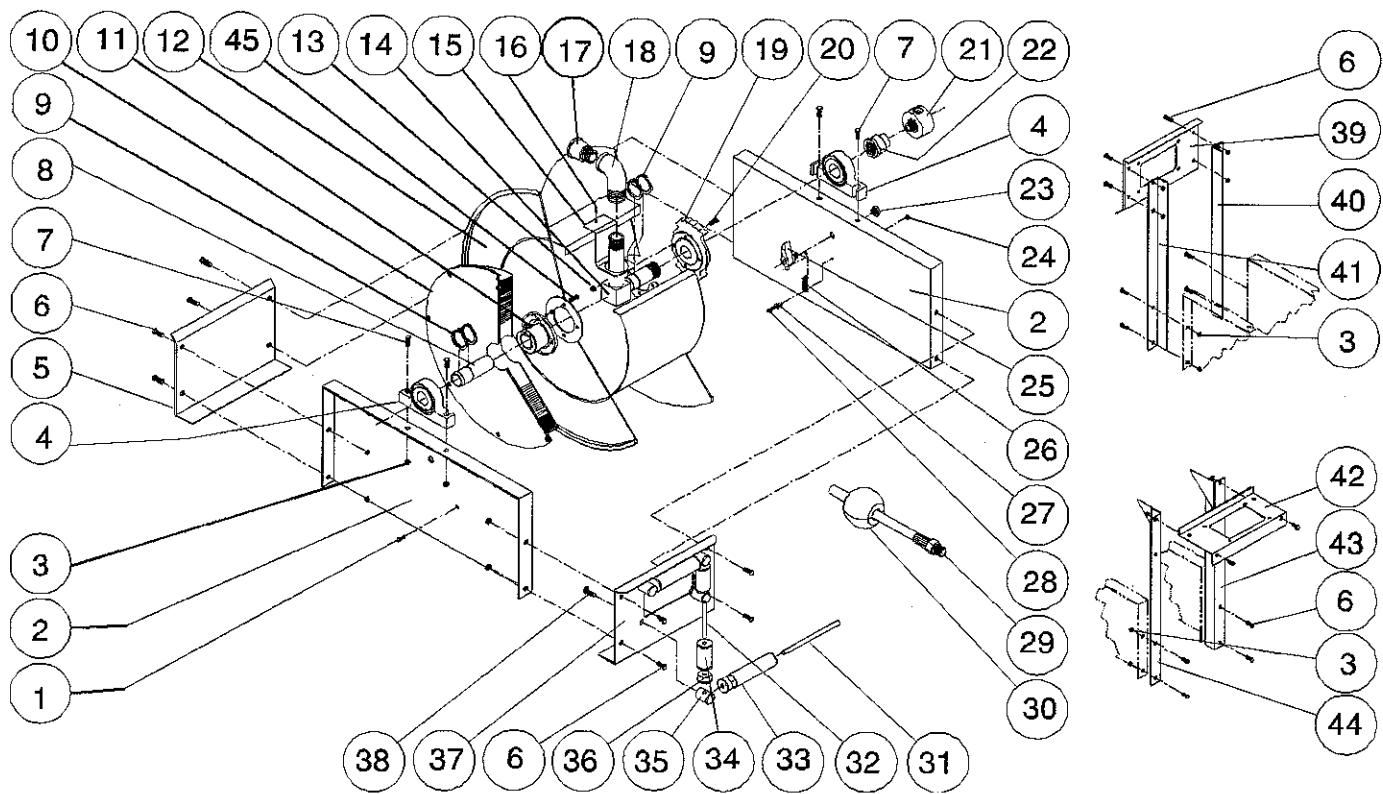
SAFETY

Do not use reel at higher pressures or temperatures than listed on the back of this bulletin.

Remove all spring tension before beginning disassembly process.

Reel spring motor case is permanently sealed. Any attempt to remove the spring motor may cause serious injury.

© Indicates change.



ITEM	PART NO.	QUANT.	DESCRIPTION	ITEM	PART NO.	QUANT.	DESCRIPTION
1	271832	4	1/4-20 x 1/2" screw	24	271852	1	10-32 x 3/8" hex Nyloc nut
2	271833	2	Side frame	25	271853	1	Latch pawl assembly
3	271834	12	3/8-16 hex flange nut	26	247928	1	Latch spring
4	271835	2	Pillow block	27	271841	2	Latch bushing
5	271836	1	End frame support	28	271863	1	10-32 x 7/8" screw
6	271837	8	3/8-16 x 5/8" mach. screw	29●	NONE	NONE	Hose assembly
7	271838	4	3/8-16 x 1 3/4" screw	29▲	247926	1	Hose assembly
8	271839	1	Support shaft	30●	NONE	NONE	Hose bumper assembly
9	271840	6	Snap ring	30▲	84257	1	Hose bumper assembly
10	247927	1	Spring & case ass'y	31	271748	2	Guide roller pin - long
11	271842	1	Spring arbor	32	271749	2	Guide roller pin - short
12	271843	1	Sheave assembly	33	271751	2	Guide roller tube - long
13	271844	8	1/4-20 hex flange nut	34	271752	2	Guide roller tube - short
14	271845	1	1" inlet tube	35	271759	4	Guide roller post
15	271846	1	Hose outlet support	36	271760	8	Guide roller bushing
16	271847	1	#10 x 1/2" self tapping screw	37	271761	1	Hose guide roller plate
17	N/A	N/A	Bushing	38	271764	4	5/16-18 x 1/2" hex screw
18	271848	1	90° female F.T.P. ell	39	271771	1	Guide roller plate sw
19	271849	1	Latch ratchet hub	40	271802	1	Sw support bracket
20	271850	4	1/4-20 x 5/8" hex screw	41	271803	1	Sw support bracket
21	247929	1	Swivel assembly	42	271772	1	Guide roller plate tw
22	N/A	N/A	Coupling reducer	43	271874	1	Tw support bracket
23	271851	1	1/2-20 hex flange nut	44	271875	1	Tw support bracket
				45	271768	4	5/16-18 x 1/2" screw

● 84432 Only
▲ 84433 Only