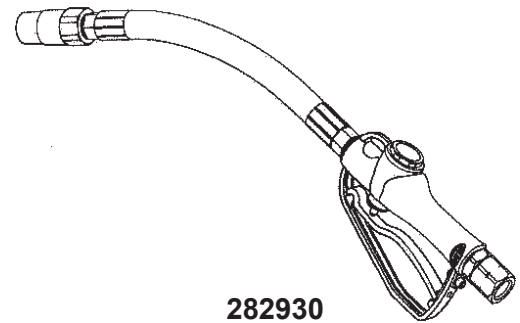


### INTRODUCTION

The Lincoln oil dispensing gun (282951) and gun with flexible extension and non-drip nozzle (282930) has been designed for use with engine oil, gear oil, automatic transmission fluid, anti-freeze/ anti-boil and compatible fluids.

This manual assists you in operating and maintaining your new oil control gun. The information contained will help you ensure many years of dependable performance and trouble free operation.

Please take a few moments to read through this manual before installing and operating your new oil control gun. If you experience problems with this product, refer to the trouble shooting sections of this manual.



282930

### IMPORTANT INFORMATION

#### ⚠ WARNING

Systems which will be dispensing fluids under pressure may need to be protected by using a thermal relief kit, which will safely limit the pressures caused by thermal expansion. Please contact your local Lincoln distributor and refer to Service Page Section K5, Page 31 for more details. Failure to include thermal relief protection may cause damage not covered under Lincoln's warranty policy.

#### ⚠ CAUTION

##### READ THIS INFORMATION CAREFULLY BEFORE USE.

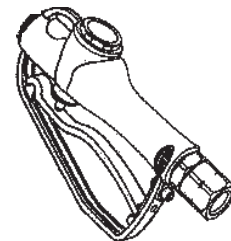
Your safety is important to us. Please read and follow all safety instructions listed inside.

Some of these instructions alert you to the potential for personal injury. "Cautions" listed throughout this manual advise of potential practices or procedures which may cause damage to your equipment.

Ensure all operators have access to adequate instructions about safe operating and maintenance procedures. Do not exceed the maximum working pressure of 10500 kpa / 1500 psi / 105 bar.

#### ⚠ CAUTION

- Do not hit the oil control gun if it fails to operate. Refer to "trouble shooting guide" or return the unit to your nearest authorized service center.
- Never point the nozzle at yourself or anyone else.
- Never exceed the pressure rating of any component installed in the System.
- Before every use check all hoses for signs of wear, leaks or loose fittings. Tighten all fluid connections regularly and replace weak or damaged hoses.
- Before attempting any repairs or maintenance of this product first disconnect the air supply from the oil pump, then release the oil line pressure by squeezing the lever on your oil control gun.



282951

### ASSEMBLY

Use suitable thread sealant when connecting the oil control gun to an oil hose.

### MANUAL NOZZLE OPERATION.

With the nozzle pointing away from you turn the nozzle tip clock-wise to open.

With the nozzle pointing away from you turn the nozzle tip anti-clockwise to close.

### HANDLE OPERATION

Ensure the manual nozzle is open before operating the handle.

To latch the handle, squeeze the lever, push the latch button on the rear of the gun and then release lever.

To release the latch in simply squeeze and release lever.

### SPECIFICATIONS:

Flow Range:	Up to 56 ltr/min (15 US GPM)
Maximum Pressure:	105 BAR, 10500kPa, 1500 PSI
Max Operating Temp	70 deg C (158 deg F)
Weight:	1.8KG, 4 lbs.
Swivel Inlet:	3/4" NPT
Outlet:	3/4" NPT
Wetted Parts:	Aluminium, Mild Steel, Nitrile Rubber
Fluid Compatibility:	Transmission Fluid, Anti-freeze/ Anti-Boil Engine Oil, Diesel Oil and Lubricating oils to SAE 140.

© Indicates change

# 282930, 282951 HIGH FLOW CONTROL VALVE



## CAUTION

Before carrying out any maintenance, disconnect the air supply to the pump and release the fluid pressure in the system by pressing the lever on the control gun.

Inspect your oil control gun daily for any signs of damage. Replace any damaged parts or components as required.

### CONTROL HANDLE DISASSEMBLY.

Use a clean bench to carry out maintenance.

- A) Remove the oil delivery hose from the control gun inlet swivel (14).
- B) Unscrew and remove swivel (14) from the control gun inlet.
- C) Carefully unscrew the valve cap (20), remove the valve spring (19) and valve stem assembly (15, 16, 17) from the gun body (8).
- D) Remove the Gun Handle (9).

### CONTROL HANDLE REASSEMBLY.

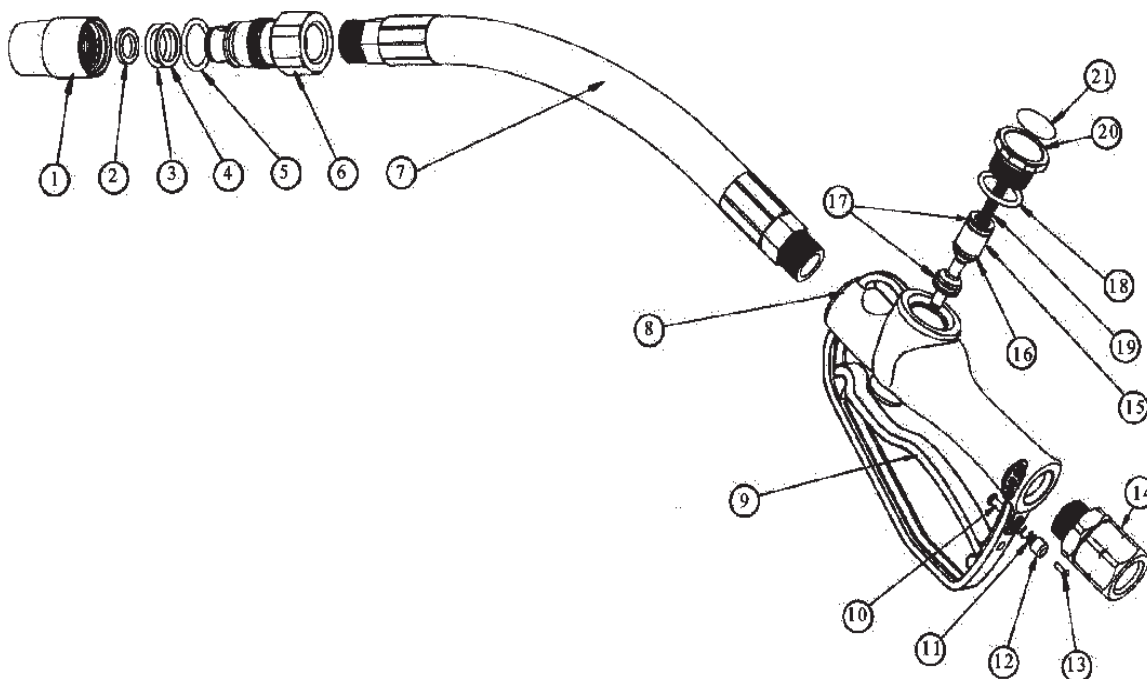
- A) Clean and inspect all parts for wear or damage. Replace any suspect, worn or damaged components.

Note: Lightly lubricate all o-rings and seals before assembly.

- B) If required, carefully place new o-rings (16, 17, 18) onto valve stem (15).

Note: o-ring (16) has a green dot and is different to the 2

### PARTS DIAGRAM



O-rings (17)

C) Re-fit the gun handle (9)

D) Carefully insert the valve stem assembly (15,16,17) into the gun body (8)

E) Replace the valve spring (19), then replace the valve cap. Note: Ensure the valve spring locates around the nipple on the underside of the valve cap.

F) Replace the swivel assembly (14)

Note: After assembly ensure the control gun handle is operating correctly.

### MANUAL NOZZLE MAINTENANCE

- 1) Using a spanner and strap wrench, unscrew the nozzle cap (1) from the nozzle body (6).

Note: All the nozzle seals must be replaced if the nozzle is disassembled.

- 2) Remove all the old seals from the nozzle body (6).
- 3) Inspect the nozzle cap (1) and nozzle body (6) for damage. Replace if found to be damaged.
- 4) Replace all the nozzle seals (2,3,4,5)
- 5) Lightly lubricate the seals, then reassemble nozzle.

**SPARE PARTS LIST**

ITEM	PART NUMBER	DESCRIPTION
*1	PART OF KIT 282941	NOZZLE CAP
*2	PART OF KIT 282941	QUAD RING
*3	PART OF KIT 282941	O-RING
*4	PART OF KIT 282941	BACK UP WASHER
*5	PART OF KIT 282941	O-RING
*6	PART OF KIT 282941	NOZZLE BODY
*7	282942	OUTLET HOSE
8		GUN BODY
9	282943	GUN HANDLE
10	PART OF KIT 282944	LATCH PIN
11	PART OF KIT 282944	LATCH SPRING
12	PART OF KIT 282944	LATCH CAP
13	PART OF KIT 282944	LATCH SCREW
14	282931	SWIVEL
15	PART OF KIT 282946	VALVE STEM
16	PART OF KIT 282946	O-RING (green dot)
17	PART OF KIT 282946	(2) O-RINGS
18	PART OF KIT 282946	O-RING
19	PART OF KIT 282946	VALVE SPRING
20	PART OF ITEM 18	VALVE CAP
21		LABEL

\* - 282930 Only

**TROUBLE SHOOTING GUIDE**

TROUBLE	CAUSE	REMEDY
Constant oil leak from the nozzle	Damaged o-ring (16,17)	Replace damaged o-ring
Intermittent drip from the nozzle	Nozzle open or damaged	1) Remove the nozzle and blow out any dirt particles. 2) Close nozzle fully or replace the nozzle seals.
Oil leak from valve stem area	Damaged o-rings (16,17 or 18)	Replace damaged o-rings
Oil leaking from the swivel inlet	Damaged swivel	Replace swivel