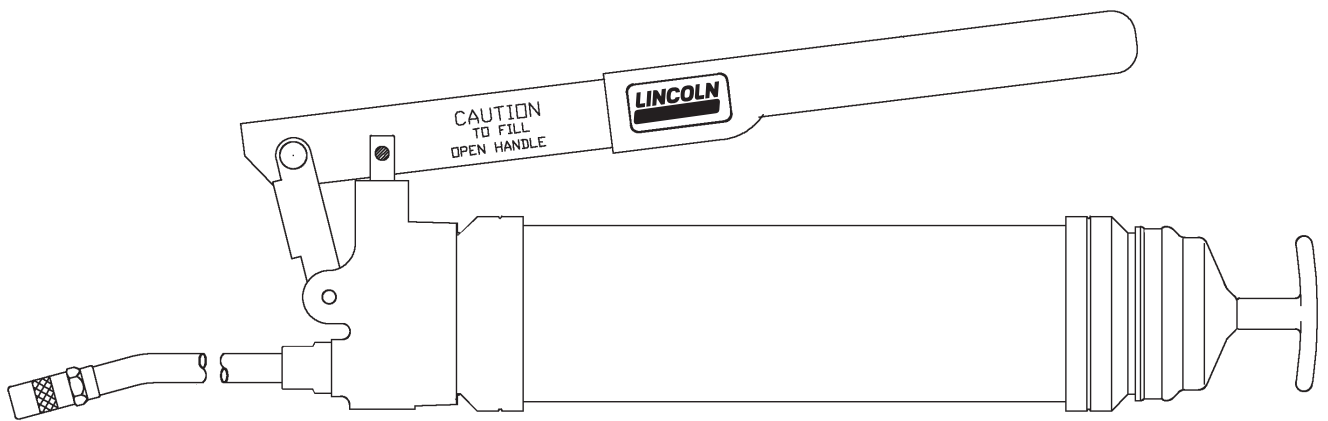


Grease gun

Model 1148, series "B"



Date of issue	April 2015
Form number	404637E

Read manual prior to installation or use of this product. Keep manual nearby for future reference.

Table of contents

- Safety 2
- Capacities 3
- Service parts 3
- Operating instructions 3
- How to install a grease cartridge 4
- How to fill the grease gun from a bulk lubricant container 4
- How to fill lever gun with a filler pump 4
- How to expel air pockets 5

Safety

Read and carefully observe these installation instructions before installing, operating or troubleshooting the assembly. The assembly must be installed, maintained and repaired exclusively by persons familiar with the instructions.

Install the assembly only after safety instructions and this guide have been read and are completely understood.

Adequate personal protection must be used to prevent splashing of material on the skin or in the eyes.

Always disconnect power source (electricity, air or hydraulic) from the pump when it is not being used.

This equipment generates very high grease pressure. Extreme caution should be used when operating this equipment as material leaks from loose or ruptured components can inject fluid through the skin and into the body. If any fluid appears to penetrate the skin, seek attention from a doctor immediately.

Do not treat injury as a simple cut. Tell attending doctor exactly what type of fluid was injected.

Any other use not in accordance with instructions will result in loss of claim for warranty or liability.

- Do not misuse, over-pressurize, modify parts, use incompatible chemicals, fluids, or use worn and/or damaged parts.
- Do not exceed the stated maximum working pressure of the pump or of the lowest rated component in your system.
- Always read and follow the fluid manufacturer’s recommendations regarding fluid compatibility, and the use of protective clothing and equipment.
- Failure to comply may result in death or serious injury.

Explanation of signal words for safety



This is the safety alert symbol. It is used to alert you to potential physical injury hazards. Obey all safety messages that follow this symbol to avoid possible injury or death.

SAFETY INSTRUCTION

Safety instruction signs indicate specific safety-related instructions or procedures.

DANGER

Indicates a hazardous situation which, if not avoided, will result in death or serious injury.

WARNING

Indicates a hazardous situation which, if not avoided will result in death or serious injury.

CAUTION

Indicates a hazardous situation which, if not avoided, could result in minor or moderate injury.

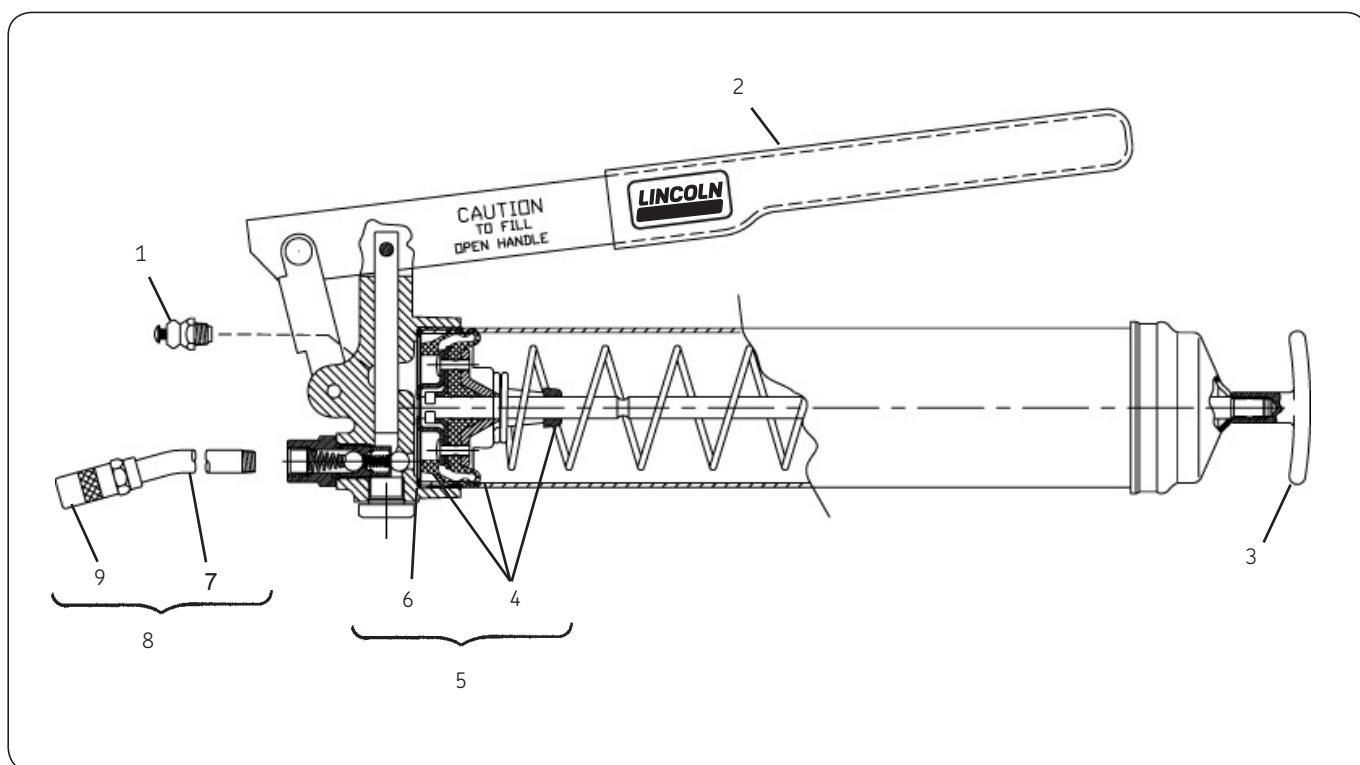
Specifications

Bulk capacity 16 oz. (473 cm³)
 Cartridge capacity 14 1/2 oz. (429 cm³)

Service parts

Item no.	Description	Part no.
1	Vent valve	243307*
2	Hand grip	412933
3	Follower handle	272078*
4	Follower assembly	93499*
5	Follower kit	286158*
6	Container packing	34793*
7	Nozzle extension	62028
8	Hydraulic coupler with extension	5853
9	Hydraulic coupler	5852

* Indicates change



⚠ WARNING

Extreme pressure may cause nozzle extension or whip hose to burst. Use only Lincoln approved hoses and follow whip hose instructions and warnings.

⚠ WARNING

Keep hands clear of the extension during operation of the grease gun. Use safety glasses and gloves for protection during operation. Grease gun can develop high pressure up to 7,000 psi (483 bar).

Failure to comply may result in serious injury or death.

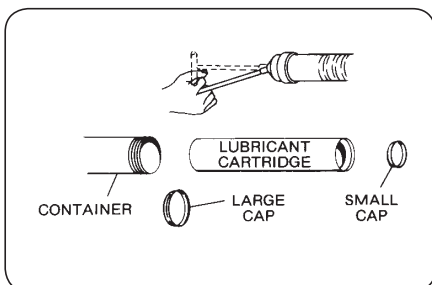
Operating instructions

Fill the lubricant container. Refer to reverse page for instructions.

Wipe fittings clean before lubricating. Push coupler onto fitting at slight angle and then center coupler on the fitting. Operate lever gun handle to lubricate taking care not to damage seals by excessive pressure or lubricant volume. After lubricating turn coupler at a slight angle to release grip of the coupler jaws.

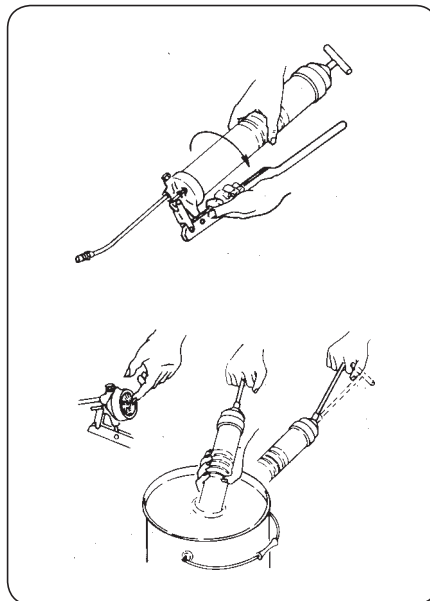
To install a lubricant cartridge

- 1 Loosen the pump head 2-3 rotations.
- 2 Pull back on the follower handle until the follower rod is fully extended, approximately 8 inches; pull it sideways to latch the rod groove into the keyhole slot in the container cap.
- 3 Remove the pump head from container tube.
- 4 If there is an empty lubricant cartridge, carefully release the follower handle to eject it from the container tube.
- 5 If an empty lubricant cartridge was expelled, pull back on the follower handle again and re-lock the rod groove into the keyhole slot in the container cap.
- 6 Remove the plastic cap from the end of the new lubricant cartridge and insert the open end of the cartridge into the container tube.
- 7 Remove the metal pull-tab from the lubricant cartridge.
- 8 Thread the container tube assembly onto the head assembly at least two full turns.
- 9 Pull the follower handle to release the follower rod from the container cap.
- 10 Rotate the follower handle to engage the rod onto the follower assembly. Slightly push the follower handle forward to expel air between the thread interface of head and tube.
- 11 Finish threading the tube assembly into the pump head until tight.
- 12 Disengage the follower rod from the follower by rotating the follower handle and push the follower rod into the container.



To fill lever gun from bulk lubricant container

- 1 Remove head and plunger assembly from container tube.
- 2 Pack lubricant into cavity of the head and plunger assembly.
- 3 Insert the open end of the container tube into lubricant. Slowly pull the follower handle back while pushing the container tube deeper into the lubricant to prevent air pockets from being pulled into the container tube.
- 4 When the follower rod is fully extended pull it sideways to latch the rod groove into the keyhole slot in the container cap.
- 5 Loosely assemble the head and plunger assembly to the filled container tube. Release the follower rod from the container cap and disengage the follower rod from the follower by rotating the follower handle. Push the follower rod into the container. Slowly unscrew the container tube from the head and plunger assembly until lubricant oozes from the interface. Tighten container tube into the head and plunger assembly.



Air purging instructions

- 1 Engage the follower rod and piston by rotating the follower "T" handle.
- 2 Press the follower "T" handle against your chest with the gun pointing upward. At the same time, press the bleeder valve until all air is expelled and grease oozes from the valve.
- 3 Pump gun handle until grease flow is uniform and consistent.
- 4 Repeat procedure if gun stops pumping at any time.



Notice*

If inspection and cleaning are not performed correctly, grease gun will lose prime and will continue to lose prime until cleaned properly.

* Indicates change