

"I purchased a Lansky Deluxe sharpening system around 1990. I've used many other sharpeners since, but nothing comes close to getting a scalpel-like edge like my Lansky does. After over 25 years, I finally had to replace my sharpener. Of course, I went out and bought a Lansky Deluxe again! Just wanted to let you know: First, nothing comes close to the precision of Lansky (I've tried other similar designs from your competitors). Second, the quality is top notch. Anything that lasts me 25+ years...is stellar. Thank You!"

– Michael Hunt  
*Longtime customer*

"I bought my kit at a gun show back in the early '90's... Every single knife I have, including my kitchen knives have a 'perfect' edge. There have been absolutely ZERO problems with the Lansky Sharpening System. I have dropped some of the stones and they separated from the holder. I returned them to Lansky, and within days, I had new replacement stones. I have nothing but praise for the Lansky organization. I will be a Lansky customer forever!"

– Jim Mault  
*Alvaton, Kentucky*

"I've been using Lansky products for the last five years in my knife sharpening business, and I wouldn't use anything else. The products are durable and deliver as promised. All my customers are very satisfied. I wouldn't be without my favorite Diamond Sharpening System when I'm on the road. 100% dependable."

– Jim Zerschling,  
*Professional Knife Sharpener  
for over 30 years*

Specifications subject to change without notice. Products shown in this catalog are either manufactured by or made for LANSKY SHARPENERS.

**LANSKY**  
▲ SHARPENERS



**LANSKY**<sup>®</sup>  
SHARPENERS



Catalog



A woman wearing a grey beanie with a logo, a camouflage jacket, and camouflage boots is sitting on a green plastic container in a forest. She is sharpening a knife. A rifle with a scope and a magazine of bullets is lying on the ground next to her. The background shows trees and a forest floor covered in pine needles.

# LANSKY®

SHARPENERS

“Traveling around the world to hunt is my passion. I always have the best equipment by my side and I never leave home without my Lansky QuadSharp®.”

— Jen O’Hara,  
Girls with Guns Clothing





#### ORIGINAL DESIGN

### STANDARD KNIFE CLAMP

STOCK: LP006

Included with every kit. This extruded aluminum knife handling clamp can hold almost any blade. The notched jaws allow for additional handling of most narrow blades  $\frac{1}{2}$ " wide or less.



#### SOFT-GRIP

### DUAL THUMBSCREW KNIFE CLAMP

STOCK: RCLAMP

The dual thumbscrew Soft-Grip Clamp was designed specifically for those looking for an easy to use clamp, that would also prevent scratching on coated or highly polished blades. Not for use on blades  $\frac{1}{2}$ " wide or less.



# CONTROLLED-ANGLE sharpening systems



**Angle consistency** is the most critical, most elusive element of hand sharpening – and the Lansky **Controlled-Angle** System ensures that your knife edge sharpens to the **exact bevel you specify**.

The knife clamp holds the knife steady and holds the angle guide static and firm. This allows the user to achieve the desired angle with every stroke of the sharpener.

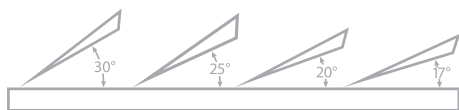


## ORIGINAL DESIGN STANDARD KNIFE CLAMP

Standard notched clamp comes in every kit.



Select the sharpening angle that is best suited for the knife's intended use.



**30°** Best for heavy duty use

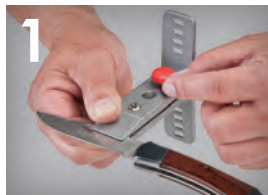
**25°** Ideal for hunting and outdoors

**20°** An excellent edge for kitchen and slicing

**17°** Best for fillet knives, razor blades or similar

## Controlled-Angle makes knife sharpening easy!

**ATTACH BLADE  
TO CLAMP**



**ASSEMBLE HONE  
ON GUIDE ROD**



**SHARPEN ONE SIDE,  
THEN FLIP**







**DELUXE**  
STOCK: LKCLX

Extra Coarse  
Coarse  
Medium  
Fine  
Ultra Fine

**EVERY KIT INCLUDES:**

Multi-lingual instructions  
One guide rod per hone  
Standard knife clamp  
Honing oil

"I have had the sharpest knives in the kitchen for 25 years, and people always ask me to sharpen theirs for them. One particular chef said it was like driving a new car when I sharpened his favorite knife for him. I'll never use anything else but the Lansky Professional Sharpening System on my knives!"

—Thomas Siirila, Professional Cook  
North Carolina



**STANDARD**  
STOCK: LKC03

Coarse  
Medium  
Fine



**NATURAL ARKANSAS**  
STOCK: LKNAT

Soft Arkansas  
Hard Arkansas  
Hard Black Arkansas



**DELUXE DIAMOND**  
STOCK: LKDMO

Extra Coarse Diamond  
Coarse Diamond  
Medium Diamond  
Fine Diamond



**STANDARD DIAMOND**  
STOCK: LK3DM

Coarse Diamond  
Medium Diamond  
Fine Diamond



**PROFESSIONAL**  
STOCK: LKCPR

Medium Serrated  
Coarse  
Medium  
Fine  
Ultra Fine



**UNIVERSAL**  
STOCK: LKUNV

Medium Serrated  
Coarse  
Medium  
Fine



# CONTROLLED-ANGLE SYSTEMS

## mounts & hones



### PEDESTAL MOUNT

STOCK: LM007

- Designed for increased stability
- Lightweight single-piece unit
- Screw holes for optional mounting



### UNIVERSAL MOUNT

STOCK: LM009

- Lightweight aluminum construction
- Easily stores in your Lansky case
- Screw holes for optional mounting



### SUPER "C" CLAMP

STOCK: LM010

A unique two-piece design that allows you to attach your Lansky Sharpening System on vertical, horizontal or curved surfaces.

## ALUMINA HONES

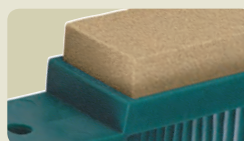
Fabricated to maintain grit consistency throughout



#### EXTRA COARSE

STOCK: S0070

70 grit – very abrasive



#### MEDIUM

STOCK: S0280

280 grit – medium abrasive



#### COARSE

STOCK: S0120

120 grit – abrasive



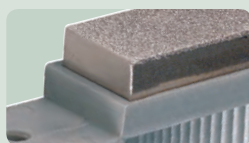
#### FINE

STOCK: S0600

600 grit – fine finishing

## DIAMOND HONES

Monocrystalline diamond hones deliver fast, tenacious sharpening



#### EXTRA COARSE

STOCK: LDHXC

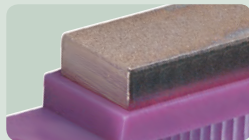
70 grit – most aggressive



#### MEDIUM

STOCK: LDHMD

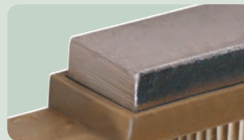
280 grit – medium aggressive



#### COARSE

STOCK: LDHCR

120 grit – aggressive



#### FINE

STOCK: LDHFN

600 grit – fine, fast finishing

## CURVED BLADE HONES

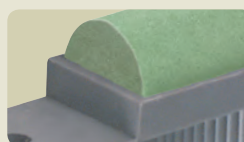
Designed for inwardly curved blades such as karambits, hawkbills, etc.



#### COARSE

STOCK: HR120

120 grit – abrasive (alumina oxide)



#### FINE

STOCK: HR600

600 grit – fine finish (silicon carbide)



#### MEDIUM

STOCK: HR280

280 grit – medium abrasive (alumina oxide)

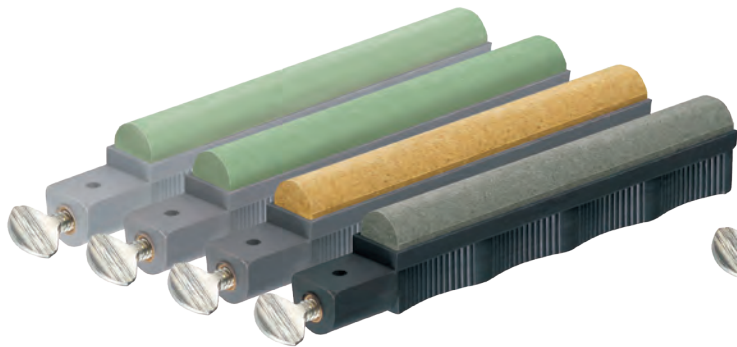


#### ULTRA-FINE

STOCK: HR1000

1000 grit – ultra-fine finish (silicon carbide)

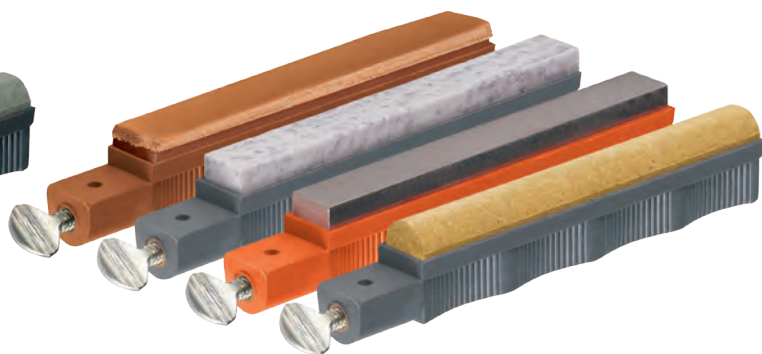




## CURVED BLADE SHARPENING HONE 4-PACK

STOCK: HRSET

Specifically designed to sharpen inwardly curved blades such as kukris, karambits and hawkbills. Quickly bring any inwardly curved blade from completely dull to razor sharp.



## VARIETY HONE SHARPENING 4-PACK

STOCK: VAR4

Replace the most widely used hones, while getting a taste for different varieties of abrasives at an amazing value! Includes: Medium Diamond, Medium Curved, Soft Arkansas and Leather Strop.



All Hones  
Made in USA

## SERRATED HONES Tapered ceramic radius can sharpen among the smallest serrations



### MEDIUM

STOCK: LSMRT

800 grit – sharpen serrations, plus fish hook groove



### FINE

STOCK: LSERT

1000 grit – finish serrations, plus fish hook groove

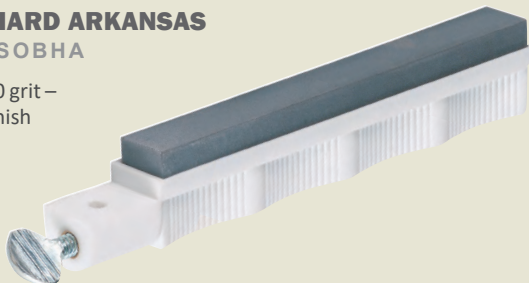


## NATURAL ARKANSAS HONES Novaculite stones polish as they sharpen

### BLACK HARD ARKANSAS

STOCK: SOBHA

1200 - 1400 grit – very fine finish



### SOFT ARKANSAS

STOCK: S0300

200 - 350 grit – medium abrasive



### HARD ARKANSAS

STOCK: S0650

450 - 650 grit – fine finish

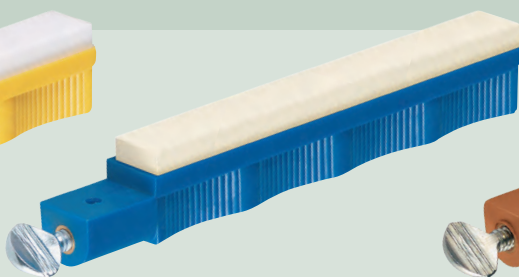
## POLISHING HONES



### ULTRA-FINE

STOCK: S1000

1000 grit – ultra-fine hone & finish (ceramic)



### SUPER SAPPHIRE

STOCK: S2000

2000 grit – ultra-fine hone & finish (ceramic)



### LEATHER STROPPING HONE

STOCK: HSTROP

A Lansky exclusive! Polishes your finished edge to a mirror-like finish.



## PORTABLE sharpeners







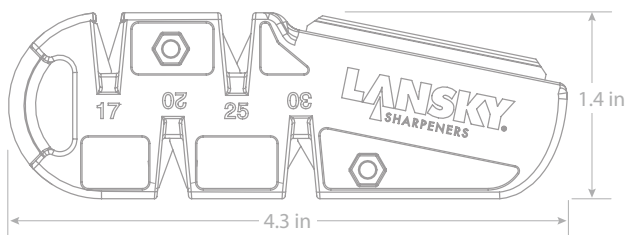
"Traveling around the world to hunt is my passion. I always have the best equipment by my side and I never leave home without my Lansky QuadSharp®."

— Jen O'Hara,  
Girls with Guns Clothing

## QUADSHARP™

STOCK: QSHARP

Maintain your knives in the field to the exact same angle every time. Featuring the same four angles as the legendary Lansky Controlled-Angle System, for the perfect portable sharpening accessory.



### FEATURES:

- Four sharpening angles: 17°, 20°, 25°, and 30°
- Sharpens in 3 to 4 strokes
- Ceramic benchstone (800 grit) for polishing
- 100% compatible with all Lansky kits
- Stores conveniently in your Lansky kit box



### Carbides:

17°, 20°, 25° and 30°  
Sharpens in 3 to 4 strokes



**Ceramic Benchstone**  
Sharpens and polishes



**Sharpening Serrations**  
Tapered for serrations

## THE ULTIMATE IN PORTABLE SHARPENING



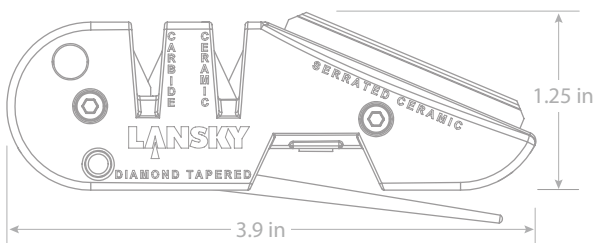
### TACTICAL BLADEMEDIC®

STOCK: PS-MED01

First aid for your blade: the first responder for field repairs on all types of knife blades. It's like having an entire sharpening kit right in your pocket. Refresh regular or serrated blades, gut hooks, hunting, fishing, and more. Four sharpening elements.



Norissa Harman of Girls with Guns Clothing uses the Blademedic's 800 grit Serrated Ceramic element as a benchstone for fine finishing.



**Tungsten Carbide**  
Just three or four strokes will restore your blade



**Ceramic Finishing**  
1000 grit ceramic polishes in 3 to 4 strokes



**Diamond Tapered Rod**  
Monocrystalline (600 grit) for fast reconditioning



PORTABLE  
sharpeners



LANSKY



## ROADIE™ 8-IN-1 KEYCHAIN SHARPENER

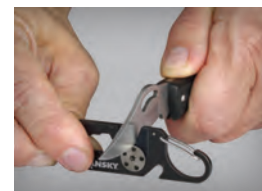
STOCK: ROAD1

The **Roadie™** contains the most useful features per square inch of any other sharpener of its size. The ultimate in portability and versatility; just clip the carabiner on your keychain or pack and you're ready to hit the open road or the dusty trail.



### FEATURES:

- Carbide Sharpener
- Lightweight metal construction
- Carabiner for attaching to keychain or backpack



**Tungsten Carbide**  
Sharpens in 3 to 4 strokes



**Bottle Opener**  
Open anywhere



**Pry Tool**  
Leverage when you need it

## SHARP'N CUT™ WITH MAGNET

STOCK: SCUT

The Sharp'n Cut™ is a **2-in-1** portable tool that offers a knife sharpener and small ceramic blade, all in one convenient package. Featuring an internal magnet that allows you to click it onto any convenient metal surface such as a refrigerator, tool cabinet, shelf, etc. The magnet keeps the Sharp'n Cut on hand to sharpen or cut in a pinch.

The self-deploying blade-guard retracts when the sharpener is pressed against the object you'd like to slice, such as: paper, envelopes, boxes, tape, etc.



### FEATURES:

- Self-deploying blade-guard
- Internal magnet – convenient storage
- Ceramic cutter stays sharp even after repeated use



**Tungsten Carbide**  
Sharpens in 3 to 4 strokes



**Ceramic Blade**  
Cuts easily, resists dulling



**Internal Magnet**  
For convenient storage



# PORTABLE sharpeners



## ARKANSAS POCKET STONE

STOCK: LSAPS

### FEATURES:

- 1" x 3" 200-350 grit, washita stone
- V-grooves for sharpening fishhooks
- Genuine leather carrying pouch



## DIAMOND POCKET STONE

STOCK: LDPST

### FEATURES:

- 1" x 3" 600 grit, double-sided monocrystalline diamond
- V-groove for sharpening fishhooks
- Genuine leather carrying pouch



## SPYDER SHARPENER

STOCK: LTRSP



800 grit ceramic. Finger guard acts as an angle guide.

### SHARPENS:

- Straight blades
- Spyderco® serrations
- Most other serrations
- Fishhooks (using V-groove)



## MULTI SHARPENER

STOCK: LTRIM



800 grit ceramic. Finger guard acts as an angle guide.

### SHARPENS:

- Straight blades
- Most serrations
- Fishhooks (using V-groove)



## COLD STEEL® SHARPENER

STOCK: LTRCS



800 grit ceramic. Finger guard acts as an angle guide.

### SHARPENS:

- Straight blades
- Cold Steel® serrations



## MINI DOG BONE SHARPENER

STOCK: LCDOG



800 grit ceramic. Finger guard acts as an angle guide.

### SHARPENS:

- Straight blades



## CARBIDE/CERAMIC QUICK FIX®

The tungsten carbide sharpening side puts a new edge on your knife. Finish the edge with just a few strokes on the white ceramic polishing rods.



"I bought one of these for my backpack and was impressed... I have used it on 440 stainless, 1095 carbon, 1085 carbon, 1075 carbon, 1055 carbon, 420 hc... I bought a dull cheap steel kukri... couldn't get it to take an edge with a stone, and the carbide side actually fixed it."

— B. Taylor  
Satisfied Lansky Customer



**RED**  
STOCK: LCSTC



**PINK**  
STOCK: PPIX



**CAMO**  
STOCK: LCSTC-CG

## QUICK FIX® DISPLAY BOWL

STOCK: BLCSTC24

24 piece high-visibility display



### FEATURES:

- Carbide sharpens in 3 to 4 strokes
- Ceramic polishes (1000 grit)
- Lightweight

## GOES WITH YOU ANYWHERE



## MINI KNIFE SHARPENER

STOCK: LCKEY

A compact, lightweight and versatile knife and fish hook sharpener. It features two removable 1000 grit ceramic sharpening rods that easily reposition for fish hook sharpening, or easy cleaning. Includes key chain.



"I have used one of these for over fifteen years. It is a very good way to put a final edge on kitchen and pocket knives. I'm very glad that they are still in production. As a recommendation... I will be buying more for myself and for friends. Good tools should be shared."

— PH Wilson  
Longtime customer

## MINI DISPLAY BOWL

STOCK: BKEY30

30 piece high-visibility display



Made in USA



# TUNGSTEN CARBIDE sharpeners



**PINK**  
STOCK: PDQE



**CAMO**  
STOCK: LSTCN-CG



**RED**  
STOCK: LSTCN

## DELUXE QUICK EDGE

- Carbide sharpens in 3 to 4 strokes
- Replaceable carbides
- Slip resistant grip
- Thumb rest



Made in USA

## BROADHEAD ARROW & KNIFE SHARPENER

STOCK: LTCBH

- Sharpens knives
- Sharpens broadheads
- Universal broadhead wrench
- Compact & lightweight



## QUICK EDGE

STOCK: LSTCS

- Carbide sharpens in 3 to 4 strokes
- Replaceable carbides
- Thumb rest



## QUICK EDGE DISPLAY BOWL

STOCK: BLSTCS12

12 piece high-visibility display



# NEW ITEM

INTRODUCING...

## **P.R.E.P.**



**PREPAREDNESS  
RESOURCE  
EQUIPMENT  
PACK**



### **P.R.E.P. SURVIVAL KIT**

STOCK: PREP

- Emergency blanket
- First aid mini-bag
- Mini multi-tool
- Fishing line
- Fishing hook
- Fishing sinker
- Fishing swivels
- Fishing floaters
- Tactical flashlight
- Paracord bracelet
- Lansky survival guide
- Firestarter with compass
- Collapsible water bottle
- LifeStraw water filter
- Blademedic knife sharpener
- Responder knife





## MULTI-PURPOSE sharpeners



"I use the Lansky Puck to keep my axe razor sharp. I am a big believer that the finer the cutting edge, and the less effort it takes to use, the safer the tool becomes. I demand hard use from my tools, and the Lansky Puck keeps my axe ready and keen at all times."

— Dave Canterbury  
Pathfinder School



**SILICONE CARBIDE**  
**THE PUCK®**  
**DUAL-GRIT SHARPENER**

STOCK: LPUCK

The Puck's easy to grip contoured shape, provides for safe and simple tool sharpening. The coarse (120 grit) side is for quick cutting and shaping, and the medium (280 grit) side is for final sharpening and finishing.



**SHARPENS:**

- Lawn mower blades
- Machetes
- Hatchets
- Shovels
- Axes







MAKE OLD TOOLS LIKE NEW AGAIN



**ALUMINA-OXIDE  
HEAVY DUTY  
SHARPENING TOOL**

STOCK: LHONE

Extra coarse (70 grit) is designed for heavy-duty sharpening of damaged and abused power and hand tools around the shop, farm, and home.



**SHARPENS:**

- Lawn mower blades
- Machetes
- Hatchets
- Shovels
- Axes



**ALUMINA-OXIDE  
LAWN & GARDEN  
SHARPENING TOOL**

STOCK: LGRDN

This Medium (280 grit) alumina-oxide tool's unique oblong shape allows for safe and easy sharpening of garden and hand tools, especially those with long blades.



**SHARPENS:**

- Lawn mower blades
- Machetes
- Hatchets
- Shovels
- Axes





# BENCHSTONE sharpeners

## DIAMOND ALUMINA-OXIDE CERAMIC TRI-STONE BENCHSTONE

STOCK: BS-TR100



Built to be a stand alone sharpening center. Three sharpening surfaces: monocrystalline Diamond, Alumina-Oxide, and Ceramic. The sturdy plastic base boasts a wide low-profile footprint and non-slip rubber feet for greater stability, plus screw receivers for optional bench mounting.

### DIAMOND

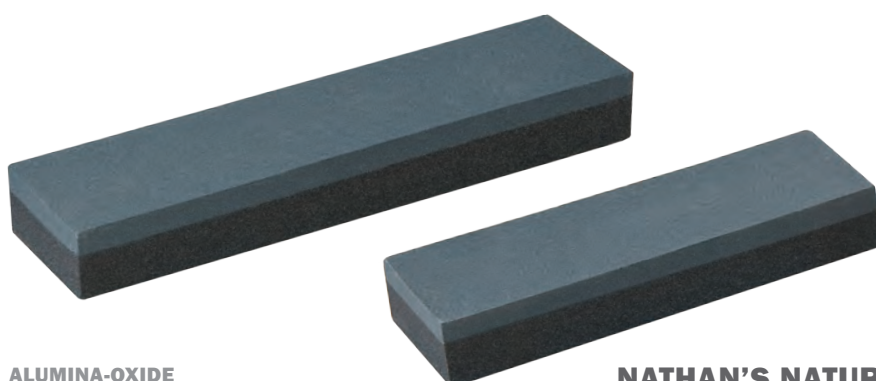
(280 Grit) Quickly set an edge

### ALUMINA-OXIDE

(280 Grit) Refine an edge

### CERAMIC

(1000 Grit) Finish and polish your edge



## ALUMINA-OXIDE COMBO STONES

An economical dual-grit design:  
Coarse (120grit) and Fine (600 grit).  
Sharpening and finishing in one unit.

2" X 8"

STOCK: LCB8FC

2" X 6"

STOCK: LCB6FC



Made in USA

## NATHAN'S NATURAL HONING OIL 4 OZ.

STOCK: LOL01

Formulated for Lansky non-diamond stones and Arkansas stones. Just a few drops will protect the stone and preserve your blade.



Made in USA





**SOFT 6" X 2"**  
STOCK: LBS6S



**HARD 6" X 2"**  
STOCK: LBS6H



**SOFT 8" X 2"**  
STOCK: LBS8S

## NATURAL ARKANSAS BENCHSTONES

### SOFT

The 200-350 grit natural Washita Soft Arkansas stones are the most versatile for general purpose sharpening.

### HARD

The 450-650 grit natural Hard Arkansas is the ultimate stone for achieving an exceptionally fine polished edge.



### ALL LANSKY BENCHSTONES SHARPEN:

- Pocket, hunting and fishing knives
- Utility knife blades
- Woodworking tools
- Gardening tools
- Chisels



## TRADITION GETS AN UPGRADE



(6" X 2" / 15 X 5 CM)

## DIAMOND BENCHSTONES

Monocrystalline diamond BenchStones feature a self-storing case/lid that protects the diamond surface, and a non-slip rubber base with screw receivers for optional bench mounting.



**MEDIUM 6" X 2"** (280 grit)  
STOCK: LDB6M

**ULTRA FINE 6" X 2"** (1000 grit)  
STOCK: LDB6E

**FINE 6" X 2"** (600 grit)  
STOCK: LDB6F



(6" X 2" / 15 X 5 CM)

## DOUBLE-SIDED DIAMOND BENCHSTONES

Monocrystalline dual-grit diamond design for maximum value and versatility. Fast sharpening and finishing. Non-slip rubber base with screw receivers for optional bench mounting.



**6" X 2" COARSE/FINE** (120/600 grit)  
STOCK: DB-1260

**6" X 2" MEDIUM/FINE** (280/600 grit)  
STOCK: DB-2860



# FISHING sharpeners



## FISH HOOK SHARPENER

STOCK: LFISH

### FEATURES:

- Sharpens almost any hook size
- Attaches to your vest or key ring
- No-fade marine white



Coarse (120 grit)  
Alumina Oxide



Made in USA

## FOLDING DIAMOND KNIFE & HOOK SHARPENER

STOCK: LDFHS

### FEATURES:

- Monocrystalline diamond
- Fine (600 grit) diamond sharpens quickly
- 3 grooves for hook sizes up to 14/0
- Folds into your pocket or tackle box
- No-fade marine white



Made in USA



## TUNGSTEN CARBIDE FILLET & BAIT SHARPENER

STOCK: LSTCF

### FEATURES:

- Carbide sharpens in 3 to 4 strokes
- Replaceable carbides
- No-fade marine white
- Thumb rest



OUTDOOR

KITCHEN

SHOP



# COMPACT self storage

## DIAMOND/CARBIDE TACTICAL SHARPENING ROD STOCK: LCD02

### FEATURES:

- Fine (600 grit) diamond finishes quickly
- Carbide sharpens in 3 to 4 strokes
- Rugged knurled metal housing



Monocrystalline diamond

Diamond Rod retracts into self-storing housing

Tungsten carbide V-groove

## PORTABLE DIAMOND SOLUTIONS

### DIAMOND FOLDING DOUBLE-SIDED PADDLES



#### MEDIUM/FINE STOCK: FP-2860

Monocrystalline diamond. Medium (280 grit) side for sharpening and Fine (600 grit) side for finishing.

#### SHARPENS:

- Knives
- Chisels
- Axes
- Shop tools



sharpening surfaces  
(3.625" x .8125" / 9.2 x 2.1 cm)

#### COARSE/FINE STOCK: FP-1260

Monocrystalline diamond. Coarse (120 grit) side for fast sharpening and fine (600 grit) side for finishing.

#### SHARPENS:

- Knives
- Chisels
- Axes
- Shop tools



### FOLDING DIAMOND TAPERED ROD STOCK: TR-600

3.5 inch fine (600 grit) monocrystalline diamond tapered rod folds into the ergonomic self-storing handle.



#### SHARPENS:

- Serrated blades
- Straight blades
- Karambit
- Gut hooks
- Seat belt cutters

"I find the Lansky Double folding Diamond paddles to be a great tool for sharpening on the trail. They provide multiple grits in a compact system, that's easy and safe to use. There is a place for one in my kit every time."

– Abe Elias  
Writer, knife maker  
and designer



# KITCHEN sharpeners



## MASTER'S EDGE® SHARPENER

STOCK: MEDGE1



OUTDOOR



KITCHEN



SHOP



Hand guard in  
closed position

Pre-set, 17°, 20° and 25°, rod  
angles for a precision edge:

17° Extra fine angle:

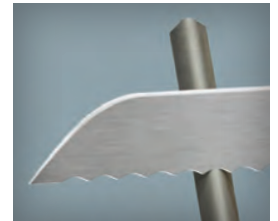
For fillet and fine slicing

20° Fine angle:

For slicing, butcher, paring and  
skinning knives.

25° Medium angle:

For hunting, camping,  
utility and chef's  
knives.



### Serrated

3 radius rod for all size  
serrations



### Straight

Sharpen all your straight  
edged knives

Rods store in the  
durable base

The Master's Edge Sharpening System includes a pair of both medium (grey, 800 grit) and fine (white, 1000 grit) 9 inch ceramic rods for sharpening and professional grade polishing. Triangular rod sharpens all types of serrations, plus awls and fish hooks.

### FEATURES:

- Most common angles: 17°, 20° and 25°
- Rubber non-slip base
- Easy snap-in rod storage
- Integrated hand guard



"Hunting is what I do. It's what I live for. I'm in the field all the time and there's nothing worse than having a dull knife. That's why we use Lansky sharpeners. With Lansky, you'll never have a dull moment again. "

— Buck Buchanan  
Just Kill'n Time TV



## SELF-STORING TURNBOX SHARPENING SYSTEMS

A guided, lightweight and compact sharpening system that quickly breaks down for storage and mobility.



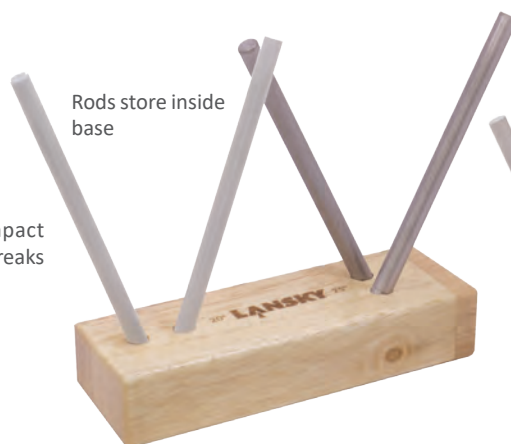
Pre-set, 20° and 25°, rod angles for a precision edge:

20° Fine angle:

For slicing, fillet, butcher, paring and skinning knives.

25° Medium angle:

For hunting, camping, utility and chef's knives.



Rods store inside base

### DIAMOND/CERAMIC FOUR ROD TURNBOX

STOCK: TB-2D2C

Includes two 5 inch diamond (600 grit) fine rods for extremely fast sharpening and two fine (1000 grit) white ceramic rods for polishing.

#### FEATURES:

- Monocrystalline diamond
- Two angles: 20° and 25°
- Lightweight and portable



Assembled  
in the USA

### CERAMIC FOUR ROD TURNBOX

STOCK: LCD5D

Includes four 5 inch ceramic rods: two medium (800 grit) grey rods for sharpening and two fine (1000 grit) white rods for polishing.

#### FEATURES:

- Two angles: 20° and 25°
- Lightweight and portable



Rods store inside base

## PRE-SET ANGLES FOR EASY EDGE MASTERY



### DIAMOND SHARP STICK®

STOCK: LSS9D

9 inch fine (600 grit) monocrystalline diamond coating sharpens while honing the blade.

#### FEATURES:

- Hand guard with comfort grip
- Ring for hang storing



### STEEL SHARP STICK®

STOCK: LSS9S

9 inch steel hones the blade.

#### FEATURES:

- Hand guard with comfort grip
- Ring for hang storing



### CERAMIC SHARP STICK®

STOCK: LSS8CM

8 inch medium (800 grit) ceramic rod for light touch-ups and honing.

#### FEATURES:

- Solid wood handle
- Hand guard



Made in USA



### ERASERBLOCK

STOCK: LERAS

Used to clean metal filings from all Lansky ceramic products.





## URBAN TACTICAL knives



"One of the best things about my World Legal is, in all my travels as a helicopter pilot I could take this knife anywhere...New York, all through the Caribbean, down to South America and I didn't worry about having this knife on me. It's a great tool at a great price."

—Ty Swanson  
Helicopter Pilot

"I purchased the World Legal as a multi purpose knife that's legal to carry between jobs. Having used it for a few months, I've found it to be quality made, fits perfect in the hand – weight is just right... The knife keeps its edge and doesn't fold down on your hand with the built-in safety feature. ...I don't know what I would do without it."

—Christopher Hollingsworth  
United Kingdom





"The X9 is a big folder best suited for big hands. The folks at Lansky put a lot of thought into this well made knife – built like a tank! ...hair popping sharp out of the box, locks up solid."

– Charles Reeve,  
Knife enthusiast

## RESPONDER X9

STOCK: LKN222 (CLAM)

STOCK: BXKN222 (BOXED)

The impressively sized Responder X9 boasts a Sandvik® 12C27 blade for excellent corrosion resistance and edge retention with extended thumb hole for one-handed opening. The manually operated Responder X9 has no spring assist, therefore is in compliance with laws that restrict assisted opening knives.

- 2-position deep-pocket clip (tip up or tip down carry)

### ENHANCED FEATURES

- 4" Sandvik® 12C27 blade
- 9" overall length, 8.4 oz.
- G10 handle

## RESPONDER

STOCK: LKN111 (CLAM)

STOCK: BXKN111 (BOXED)

The Responder is an EDC (Every Day Carry) sized version of the larger Responder X9. The manually operated Responder has no spring assist, therefore is in compliance with laws that restrict assisted opening knives.

- 3.5" 9Cr18MoV Stainless blade
- 7" overall length, 5.5 oz.
- 2-position deep-pocket clip (tip up or tip down carry)
- Nylon handle

## WORLD LEGAL™ BLADEMEDIC® COMBO

STOCK: WRDPAC

Combined together by popular demand! This pack combines our worldwide best selling sharpener and knife. (pg. 7)

## RESPONDER BLADEMEDIC® COMBO

STOCK: UTR7

Combined together by popular demand! This pack combines our best selling sharpener in the USA, with our number one selling knife in the USA. (pg. 7)

## WORLD LEGAL™ SLIP-JOINT KNIFE

STOCK: LKN333 (CLAM)

STOCK: BXKN333 (BOXED)

Lansky's most popular knife, the World Legal™ was born from one idea: make a great knife that can be carried just about anywhere in the world.\*

\*Contact local governments for the most recent regulations

- 2.75" 9Cr18MoV Stainless blade
- 7" overall length, 5.4 oz.
- Ambidextrous carry
- 4-position pocket clip
- Nylon handle

## MADROCK® WORLD LEGAL SLIP-JOINT KNIFE

STOCK: LKN444 (CLAM)

STOCK: BXKN444 (BOXED)

The success of the World Legal knife has given birth to this fantastic addition to our World Legal\* category. The Madrock® design upgrades include: same blade length yet with a shorter overall length, reduced weight, and a slip-resistant grip.

- 2.75" 9Cr18MoV Stainless blade
- 6.75" overall length, 4 oz. (113 grams)
- 2 - position deep-pocket clip
- Ambidextrous carry
- Non-slip rubber handle

\*Contact local governments for the most recent regulations





# PORTABLE knives & tools

## 20 FUNCTION MULTI-TOOL

STOCK: LMT100B

- Stainless steel construction
- 4 1/8" closed
- Reinforced belt sheath with bit pouch
- Pliers/grippers
- Wire cutter
- Plain blade
- Serrated blade
- Small screwdriver
- Medium screwdriver
- File/ruler
- Awl
- Magnetic bit holder
- Can opener/bottle opener
- Reinforced nylon sheath
- 10 assorted bits



## EASYGRIP

STOCK: LKN030

- 3 5/8" 420 SS bead blasted blade
- 4 3/4" slip-resistant handle
- 1/3 serrated blade
- Ambidextrous opening
- Lockback
- Nylon belt sheath



## THE "KNIFE"

STOCK: LKNFE

This composite plastic knife is excellent for opening letters, boxes and various other light-duty applications.



## MINI MULTI-TOOL DISPLAY BOARD

STOCK: MT-050

- Needle nosed pliers/grippers
- Wire cutter
- Plain blade
- Serrated blade
- Small Phillips screwdriver
- Small flathead screwdriver
- Medium flathead screwdriver
- Large flathead screwdriver
- File
- Awl
- Bottle opener
- Can opener



## SMALL LOCKBACK

STOCK: LKN045

- 2 1/4" 420 Stainless Steel satin blade
- 3 1/4" handle with rubber grip
- Pocket clip





# MERCHANDISING & packaging



## CLIP STRIPS

The Clip Strips come pre-loaded with select Lansky products. Simply remove the pre-loaded Clip Strips, hang and sell. Great for cross marketing.



## POP DISPLAYS

Designed for quick assembly. Simply unfold the base, attach the assembled shelf unit, and stock the hooks with product.

## DELUXE MERCHANDISER

The high-visibility Deluxe Merchandiser can be easily assembled and then hung on your existing peg boards and slat walls, without altering your current floor plan. Establish your store as a local sharpening resource.



Learn more about knives, axes and tools we have.