

DON'T COMPROMISE, GET THE BEST.



 ***Koblentz***<sup>®</sup>



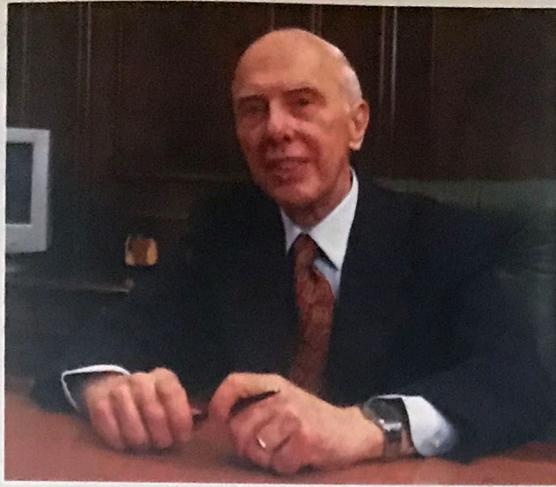


# K O B L

Koblenz designs, manufactures and markets domestic and industrial floor cleaning products and components, washing machines, electric motors, voltage regulators and UPS (Battery Backups) for computers. The Company was founded in 1959 and has over 2,000 employees including a complete research and development engineering staff, state of the art laboratories and prototype facilities operating in two major manufacturing plants.







Walter Kohler. Chairman of the Board.



Richard Kohler: V.P. and Managing Director.

# E N Z

## m a n a g e m e n t



Jesús Grandizo: V.P. Research and Development.



Raúl Medrano: Director of Operations.  
Ambrogianni Bonetti: Director of Manufacturing Engineering.  
Ramón Fernández: Director of Manufacturing.  
Alonso Alonso: Quality Assurance Manager.  
José Pichardo: V.P. Finance.



# **T**HORNE ELECTRIC CO.



**Michele Folks**  
Branch Manager



**Lauren Siegel**  
National Sales Manager-Retail



**Tony Ritter**  
National Sales Manager- Industrial



**Mike LaBounty**  
Regional Sales Manager

The US and Canadian markets are supplied by Thorne Electric Company located in San Antonio, Texas. Order processing, product and parts inventory, shipping, customer and technical services are provided through this facility.

Thorne Electric Company is Koblenz's exclusive distributor  
for the United States.



# I N T E R N A T I O N A L M A R K E T S

It is always important for a Company to find ways of diversifying its customer base. Exporting not only allows increased sales but also provides key information about global trends and industry direction. Koblenz currently sells to over 27 countries around the world. The main export markets are Mexico, South America, Europe and The Middle East including Saudi Arabia.

The exclusive distributor for Koblenz Industrial Products in Mexico is Lienz, S.A. de C.V. Lienz markets industrial equipment, chemicals and accessories nationwide and is the largest importer and distributor of Janitorial Supplies in the country of Mexico.



Saudi Arabia.



Lienz Mexico City Offices, Service Facilities and Warehouse.



Lienz office and sales management.



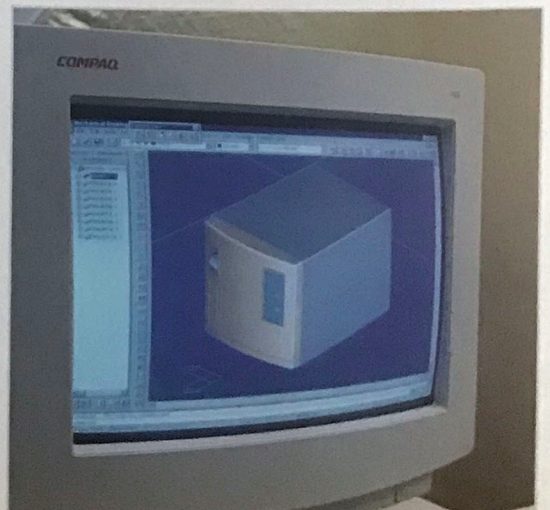
# R E S E A R C H

# K O B L

Research and Development, including Manufacturing Engineering, is carried out by a group of over 100 engineers and technicians located at the main plant.

Since 1959 when the first voltage regulator was manufactured, Koblenz has introduced numerous engineering and design innovations, and has many patents to its credit.

Product Engineering has played an important part in developing new directions regarding design, safety, durability and dependability in Koblenz products.





# & DEVELOPMENT

# E N Z



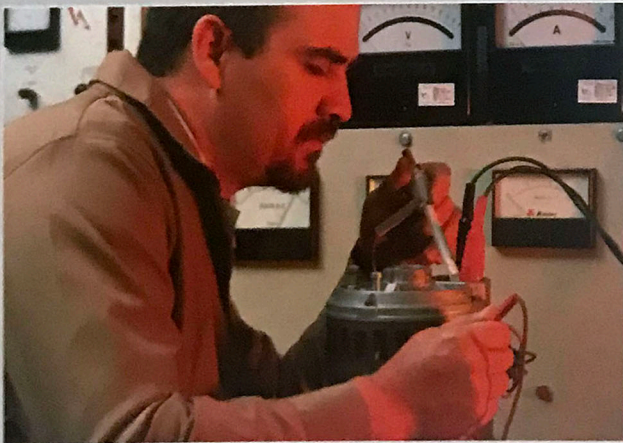
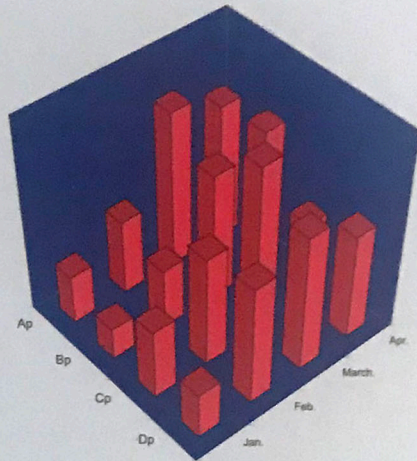
Engineers, researchers, designers and other specialists, including a staff of Industrial Design consultants in Chicago, seek not only to improve manufacturing techniques, methods and products used today, but look ahead to the future with the goal of ensuring new and better products. "Research and Development in new areas of investigation is our investment for the future" says J. Grandizo, V.P. of Research and Development. "Our laboratories, testing facilities and work shops are provided with the best electronic test and measuring equipment available".





# Q U A L I T Y A S S U R A N C E

## K O B L



Quality Assurance is not just separating good pieces from bad pieces with a large force of inspectors. Quality has to be designed into the product from its conception. The proper raw materials and design parameters are fundamental. Basic engineering development has to be done working hand in hand with manufacturing engineering.

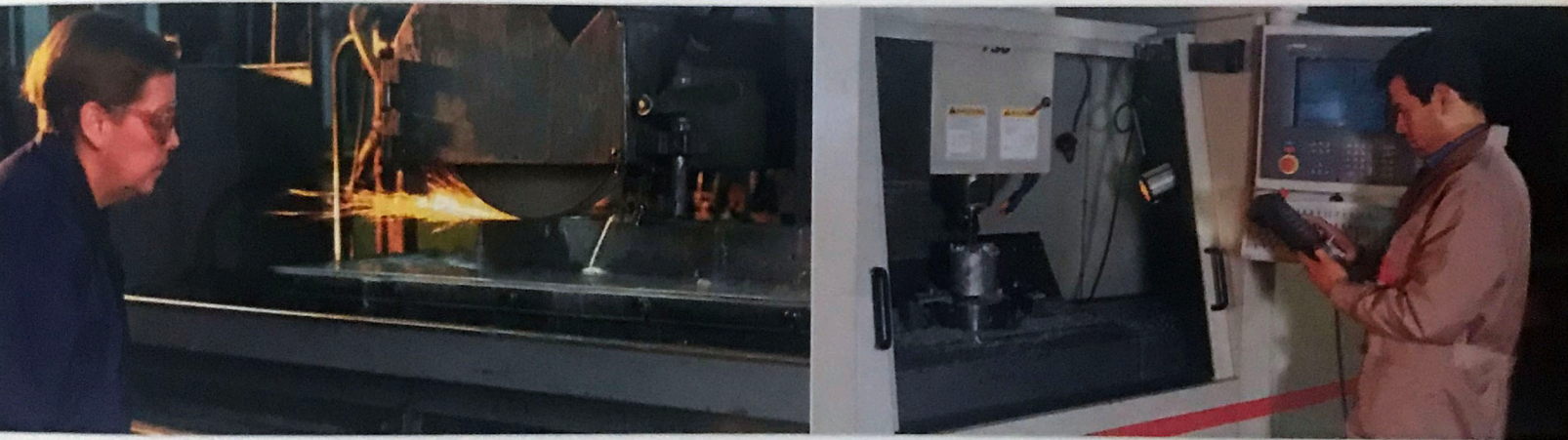
Koblenz spends over \$ 3,000,000 dollars per year to improve tooling and machinery. Quality comes from high speed automatic machines where tolerances are controlled in many cases by computers.

Human error is reduced to a minimum by building the specifications into the automatic processes. Uncompromising commitment to quality and customer satisfaction is the goal to be achieved.



# M A N U F A C T U R I N G E N G I N E E R I N G

## E N Z



Contrary to common belief, as the cost of production goes down, the quality goes up. Koblenz invests millions each year to reduce costs. Industrial and Process Engineers, Tool Engineers and Designers spend thousands of man hours to simplify and automate production processes. Millions are spent each year on new automatic machinery to improve quality and reduce costs.



# M A N U F A C T U R I N G

## K O B L E N Z



Vertical integration of all manufacturing processes from metal stamping, machining, injection molding and automatic epoxy powder coating to motor manufacturing, allow Koblenz to guarantee its high quality level and be a low cost producer.





P R O C E S S E S

E N Z



Year by year manufacturing processes are being converted to automated equipment in the race to reduce costs.



**W** H I T E      **G** O O D S

K O B L

Koblenz manufactures a complete line of compact,  
automatic and semi-automatic washing machines.

It also manufactures gas ranges and wringer washers for Mexico,  
Venezuela and the Caribbean.



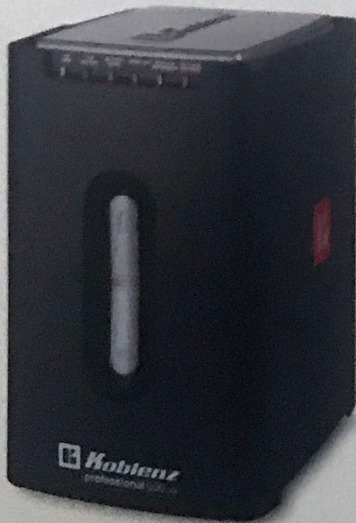


# ELECTRONIC PRODUCTS

voltage regulators  
& uninterruptible power supply

E N Z systems

The Industrial Electronics Division manufactures Battery Backups (UPS) and Voltage Regulators for computers, electronic products and refrigeration equipment. Koblenz has more than 40 years of experience in regulating wide voltage variations.





# INDUSTRIAL CLEANING EQUIPMENT

Heavy Duty Floor Machines, High Speed Burnishers, Wet / Dry Vacuum Cleaners and Upright Vacuum Cleaners are manufactured by the Industrial Products Division. Many new industrial cleaning products are under development.



# K O B L E N Z



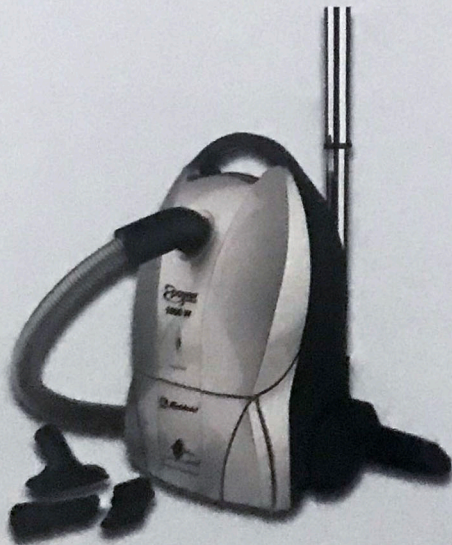


# D O M E S T I C V A C U U M    C L E A N E R S

s h a m p o o / p o l i s h e r s

The domestic floor care division manufactures a wide range of vacuum cleaners and floor machines developed to solve *real* consumer needs. Product success is driven by market research and extensive advertising campaigns.

# E N Z







# **Koblenz**<sup>®</sup>

## **JANITORIAL PRODUCTS**



**Don't compromise, *get the best!***



# HEPA Vacuum Cleaners

# Hand Vac



## Backpack

- ▶ Low maintenance line cord can be replaced in seconds.
- ▶ Full padded shoulder straps assure worker comfort.
- ▶ Easy to replace disposable filter bag.
- ▶ Superior cleaning efficiency up to 7000 sq. ft. per hour.

**BP-1400**

MODEL	AMPS	CFM	DUST CAPACITY	NET WEIGHT	SHIPPING WEIGHT	CORD LENGTH	PIG TAIL
BP-1400	8.5	120	6 Qts	11 lbs	25 lbs	50 ft	Yes

- One year limited warranty on parts and labor.



**HV-120 KG3**

- ▶ Powerful 400 watt motor.
- ▶ 17 ft. line cord.
- ▶ Easy to clean.
- ▶ Washable hermetic filter.

# THE CLEANING MACHINE®

# Portable Washer



**P-4000**



- ▶ Twin counter rotation brushes.
- ▶ Deep cleans carpet spots and stains.
- ▶ Scrubs hardfloors in small tight areas.
- ▶ Ideal for small and hard to reach places.

### Optional Accesories Available (sold in pairs)

Scrub Brushes	Part N° 45-0233-2
Polishing Brushes	Part N° 45-0232-4
Carpet Brushes	Part N° 45-0231-6
Green Scrubbing Pads	Part N° 45-0104-5
Tan Polishing Pads	Part N° 45-0105-2
Felt Buffing Pads	Part N° 45-0103-7
Lambswool Buffing Pads	Part N° 45-0102-9

MODEL	AMPS	LINE CORD	TANK CAPACITY	ACCESORIES INCLUDED	CLEANING PATH	NET WEIGHT	SHIPPING WEIGHT	PRODUCT DIMENSIONS
P-4000 00-274-3	4.2	35' Grounded	120 Oz	Carpet brushes	12"	16 lbs	21 lbs	L 13 in W 7 in H 44 in

- One year limited warranty on parts and labor.



**LCK60**

- ▶ No need to send microfibers out for laundering.
- ▶ Wash on site 6 lbs of microfibers, bonnets, rags or mops in 5 minutes\*.
- ▶ Compact size, it can be stored on-site!.

MODEL	CAPACITY	CONTROLS	TYPE OF AGITATION	DRAIN	NET WEIGHT	SHIPPING WEIGHT	PRODUCT DIMENSIONS
LCK60 00-3080-9	13.2 lbs	Automatic Shut off timer (up to 15 mins)	Reversible impeller on bottom	Gravity	22 lbs	28.6 lbs	L 16.15 in W 17.72 in H 31.89 in

- One year limited warranty on parts and labor.



# Wet / Dry Vacuum Cleaners



**WD-2.5K US**



**WD-354 K2G US**



**WD-6K2 US**



**WD-9K2 US**



**WD-12K US**



**WD-16K US**

▶ Contractor tested    ▶ Rugged construction    ▶ Handy air blower

MODEL	WD-2.5K US	WD-354 K2G US	WD-6K2 US	WD-9K2 US	WD-12K US	WD-16K US
Capacity	2.5 gallon	3 gallon	6 gallon	9 gallon	12 gallon	16 gallon
Peak H.P.	1.75	1.75	3.0	4.0	5.5	6.5
Line cord	6 ft	6 ft	10 ft	10 ft	15 ft	18 ft
Wheels	No	No	Yes	Yes	Yes	Yes
Hose Diam	1 1/4"	1 1/4"	1 7/8"	1 7/8"	2 1/2"	2 1/2"
Accessories	3	7	6	6	6	6

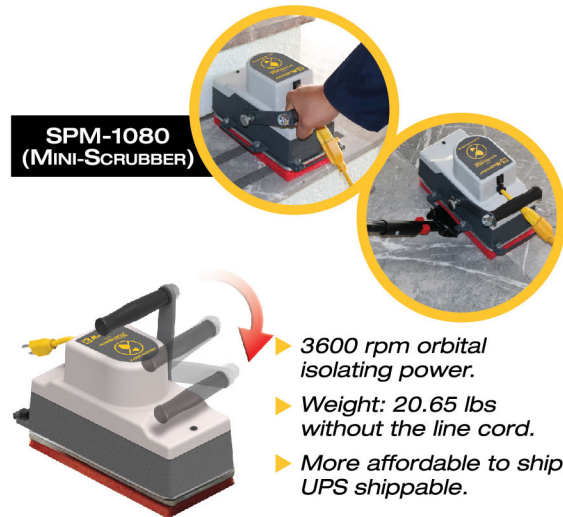


Thorne Electric Company, P.O. Box 18363  
 San Antonio, Tx 78218-0363  
 Tel: 1(800) 548•5741, (210) 590•1226  
 Fax: (210) 590-1258

[www.koblenz-electric.com](http://www.koblenz-electric.com)



# Commercial Floor Machines



## Durable all metal construction

- Triple planetary all steel gears
- ▶ High performance motor.
- ▶ Cast iron heavy weight chassis for best performance.
- ▶ Safety switch and locking mechanism.

MODEL	BRUSH SPEED	PAD SIZE	MOTOR	SHIPPING WEIGHT	NET WEIGHT	CONSTRUCTION
TP-1715 N	175 RPM	17 in	1.5 HP ♦	123 lbs	96 lbs	Cast iron & steel
TP-2015 N	175 RPM	20 in	1.5 HP ♦	125 lbs	106 lbs	
TP2S-2015 N	320/175 RPM	20 in	1.5 HP D.C.	120 lbs	101 lbs	Cast iron
SP-15 N	3500 RPM	20"x14"	1.5 HP ♦	84 lbs	61 lbs	
SP-2815 N	3500 RPM	28"x14"	1.5 HP ♦	106 lbs	81 lbs	
SPM-1080	3600 RPM	4.5/4.6"x10"		28 lbs	21 lbs	
RM-1715 N	175 RPM	17 in	1.5 HP	110 lbs	86 lbs	High impact polyethylene
RM-2015 N	175 RPM	20 in	1.5 HP	136 lbs	111 lbs	
DP-1334 N	175 RPM	13 in	3/4 HP	160 lbs	135 lbs	Cast aluminum
TP-1715-AU N	175 RPM	17 in	1.5 HP ♦	122 lbs	104 lbs	Cast iron & steel
TP-2015-AU N	175 RPM	20 in	1.5 HP ♦	124 lbs	106 lbs	

• 5 year limited warranty. \* Excludes wear items. ♦ Dual capacitor.





# Commercial Wet/Dry Vacuum Cleaners

## Optional Accessories:



- 28" front mount squeegee



- Kit B/P (00-3973-5)



- Kit E/P (00-3974-3)



- HEPA & FILTER disposable bags



AI-1260 P N



- Hospital Quiet
- Rugged Construction

MODEL	TOTAL CAPACITY	RECOVERABLE CAPACITY	AMPS	CORD LENGTH	CFM	TANK	DRAIN HOSE	NET WEIGHT	SHIPPING WEIGHT	dB
AI-1260 P N	12 Gal	8 Gal	9.0	35 ft	96	Rotomolded	No	46 lbs	61 lbs	68
AI-1660 P N	16 Gal	12 Gal	9.0	35 ft	96	Rotomolded	Yes	51 lbs	63 lbs	68
AI-1960 P N	19 Gal	16 Gal	9.0	35 ft	96	Rotomolded	Yes	53 lbs	66 lbs	68

- One year limited warranty for commercial use • Five year warranty on rotomolded tank

- ▶ Reinforced caster wheels.
- ▶ 10" wheels.
- ▶ Steel motor housing - epoxy powder painted.
- ▶ Drain hose makes emptying the vacuum very easy.
- ▶ Rugged rotomolded poly tank, resistant to corrosion.
- ▶ Powerful 9 Amp. 2 stage twin ball bearing motor.

## Clean Air Uprights



U-800



U-900

MODEL	WATTS	THERMAL RESET	NET WEIGHT	SHIPPING WEIGHT	CORD LENGTH	PIG TAIL	EXTRA FEATURES
U-800	1000	Yes	19.3 lbs	24.5 lbs	50 ft	Yes	Quick draw hose
U-900	1000	Yes	19.3 lbs	24.5 lbs	50 ft	Yes	HEPA filtration

- One year limited warranty

## On board tools

- ▶ Quick change pig tail / line cord.
- ▶ Rugged construction.
- ▶ Superior filtration.
- ▶ Clean air motor system that filters the air before it reaches the motor.
- ▶ Ideal for cleaning hotels, restaurants, offices and much more.
- ▶ Easy to operate.



# Commercial High Speed Burnishers



**B-1500-FP N**

- ▶ Long life carbonless induction motor.
- ▶ Safety switch and locking mechanism.
- ▶ Circuit breaker protects electrical installation.

Ball bearing wheels

	B-1500-P N	B-1500-FP N	B-1500-C N Dust control	B-1500-FC N Dust control
HANDLE	Fixed handle	Floating handle	Fixed handle	Floating handle
DUST CONTROL SYSTEM				
PAD SIZE	20 inches	20 inches	20 inches	20 inches
MOTOR	Precision balanced powerful 1.5 HP A.C. twin capacitor			
CIRCUIT BREAKER	YES	YES	YES	YES
POWER CORD	50 Ft. 3 wire grounded 14 gauge			
TRANSPORT WHEELS	Four 5 inch. non-marking			
SHIPPING WEIGHT	106 lbs	127 lbs	108 lbs	129 lbs
NET WEIGHT w/o CABLE	98 lbs	120 lbs	102 lbs	122 lbs
CONSTRUCTION	Cast aluminum and steel			

• 5 year limited warranty. \* Excludes wear items.

**Fast Burnishing with less effort!**

# Upright Vacuum Cleaners **ENDURANCE**<sup>®</sup>



**U-40 N  
U-80 N**

**U-90 N**

\* Applies to all Zipper models with HEPA bags.

Available in any of the following options:

<b>SERIES</b>	Dump bag	Zipper bag F&G	Zipper bag HEPA F&G	Zipper bag Type A	Zipper bag HEPA Type A	Dust cup
---------------	----------	----------------	---------------------	-------------------	------------------------	----------

MODEL	AMPS	CFM	NET WEIGHT	SHIPPING WEIGHT	BAG CAPACITY	EXTRA FEATURES	CORD LENGTH	PIG TAIL
U-40 N	5.0	120	11.4 lbs	17.6 lbs	18 Qts	Ultra low operation (63.3 dB)	35 ft	No
U-80 N	7.0	125	11.6 lbs	17.95 lbs	18 Qts	Low noise operation (67.4 dB)	50 ft	Yes
U-90 N	7.0	125	13.2 lbs	19.6 lbs	18 Qts	Low noise operation (67.4 dB)	50 ft	Yes

• \*One year limited warranty for commercial use.

- ▶ Low maintenance design-easy access to belt and brush roll for quick servicing.
- ▶ Quick change pig tail / line cord on U-80 & U-90.
- ▶ Powerful twin ball bearing motor.

If you're looking for quality wet & dry vacuums, visit our website.