



## The 150 mm Pliers Wrench.



The small professional tool with the quality and functional features of the large pliers wrenches.



# The Original in Pocket Size.

## The 150 mm Pliers Wrench.



Article-No.	EAN 4003773-	Working capacities		 mm	Adjustment positions	 mm	 g
86 03 150	069676	head nickel plated, plastic coated handles	1"	27	14	150	175
86 05 150	069928	head nickel plated, with two colour dual component handles	1"	27	14	150	195



- ▶ heavy-duty, small professional tool for precision tightening work
- ▶ same quality and functional features as the large pliers wrenches
- ▶ gripping of all widths across flats up to 27 mm
- ▶ 14 adjustment positions for comfortable handling



**KNIPEX** Quality – Made in Germany

# The 150 mm Pliers Wrench – for tightening, bending, pressing, holding.



The solution for fine mechanical work: the mini pliers wrench adjust to suit the smallest workpieces – simply by pushing a button!

By secure locking the smooth jaws of the 150 mm pliers wrench prevent damage to sensitive surfaces – like the large pliers wrenches do. The optimised handle position and a 10 : 1 ratio of hand force provide excellent results.

### Applications

- **in industry and various trades**  
e. g. tightening, bending, pressing, holding
- **in sport and leisure**  
e. g. emergency tool kit/boats, diving, bicycles and motorcycles
- **in hobbies and DIY work**  
e. g. model construction, bonded joints, closing chain links
- **in the home and garden**  
e. g. fittings, furniture assembly, garden tools, moving home

## Original KNIPEX Pliers Wrench in pocket size.



86 05 150  
Illustration 1:1

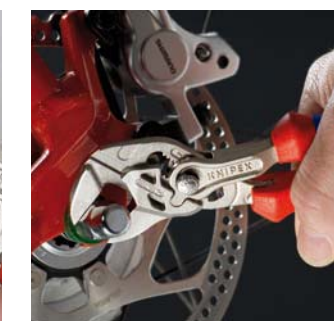
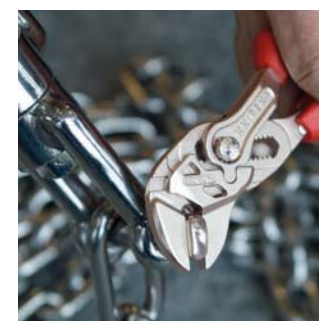
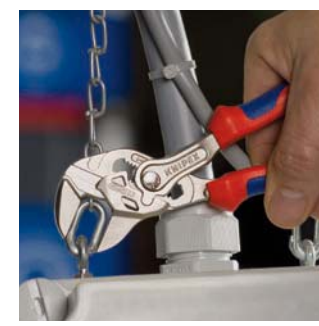
Light, reliable and efficient work: 14 adjustment positions for ergonomic handle position and different workpiece sizes.



- excellent for gripping, holding, pressing and bending workpieces
- zero-backlash surface pressure of parallel jaws prevents damage to sensitive components
- fast adjustment directly on the workpiece by pushing a button
- no unintentional shift of the gripping jaw position, no slipping of the joint
- ratchet-action gripping jaws allow fast tightening and releasing
- cam action provides a 10 : 1 ratio for strong gripping power



Universal Mini Pliers Wrench for tightening, bending, pressing and holding.



# KNIPEX-Plier Wrench

## The complete Range



Art.-No.	Length	Handles	Working Capacities		Δ
			mm	Inch	
86 03	180/7"	plastic coated	up to 35	1 3/8"	260
86 03	250/10"		up to 46	1 3/4"	540
86 03	300/12"		up to 60	2 3/8"	725
86 05	180/7"	two-colour, dual component	up to 35	1 3/8"	280
86 05	250/10"		up to 46	1 3/4"	570

- ▶ Gripping Plier and Wrench in a single tool
- ▶ highly suitable for gripping, holding, squeezing and bending workpieces; also for the careful installation of finished -surface fittings
- ▶ grips all sizes up to 35/46/60 mm / 1 3/8" / 1 3/4" / 2 3/8"
- ▶ parallel, smooth jaws
- ▶ fast adjustment at the touch of a button with the tool on the workpiece
- ▶ the action of the jaw allows screw unions to be tightened and released quickly using the ratchet principle
- ▶ lever ratio greater than 10 – 1 for strong gripping power
- ▶ box joint construction



KNIPEX Quality – Made in Germany

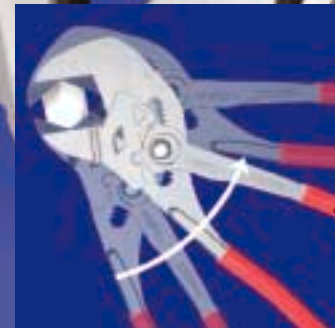


# KNIPEX-Plier Wrench

## Gripping Plier and Wrench in a single tool



Instant adjustment – jaws always parallel



Works using the ratchet principle

**NEW: length 300 mm/12"**  
capacity up to 60 mm / 2 3/8"



# KNIPEX-Plier Wrench

## Fastening, gripping, holding and bending with a single tool

The Plier Wrench combines the jobs of a gripping plier and a wrench in a single tool. Screws, nuts and fittings of capacities up to a maximum of 60 mm / 2 3/8" can be tightened and released easily and smoothly.

The Plier Wrench can be easily adjusted at the touch of a button on the workpiece. The infinitely adjustable gripping jaws are always parallel. They grip without play under pressure. Thus a damage to the edges is avoided – this is particularly important when working on plated and soft fittings.

Working with the Plier Wrench offers the advantage of using the ratchet principle: No need to reset the tool on the workpiece. Thanks to the favourable ratio the jaws can grip extremely strong. This is why the Plier Wrench is suitable for gripping, holding, squeezing and bending.

Being a universal tool the Plier Wrench can be employed in nearly every sector of assembly, maintenance and repair. It also serves well as on-board tool for motor vehicles, motorbikes, bikes and boats.



Handy on-board tool with a vast possibility of applications and a big operation capacity of 35 mm / 1 3/8" (Model 86 03 180)

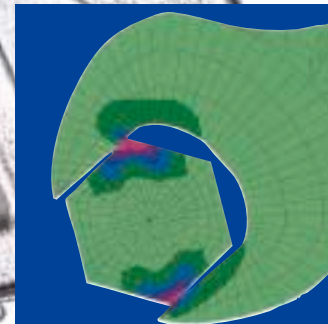
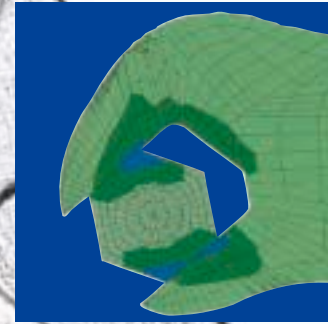


Instant adjustment of the jaws and a high lever ratio guarantee a strong, secure grip and avoids damages of the nut edges



The ideal supplementary tool, when fixing a locknut

Tension curves when force is applied on a plier wrench 86 03 250 (picture 1) and on a conventional wrench (picture 2).



Parallel, smooth gripping jaws – infinitely adjustable  
= workpieces can be gripped carefully; no play under pressure

Fast adjustment at the push of a button  
= easy handling, no unintentional adjustment

Box-joint construction  
= stable guide

Handle cover  
= non-slip



Enormous gripping power and a capacity up to 60 mm / 2 3/8" allows work on larger size bolts and nuts (Model 86 03 300)



Parallel, smooth gripping jaws are particularly suitable for the careful assembly of plated and soft fittings