

INSTRUCTIONS FOR MULTI-LOAD AIR OPERATED GREASE GUN

FOLLOW THESE STEPS CAREFULLY BEFORE USING THIS GUN

The pistol-style, single-shot Air Grease Gun is a specially designed, high-quality and professional air tool, made of the best materials and ideal for lubricating maintenance for transportation implements, agricultural machinery and industrial equipment etc.

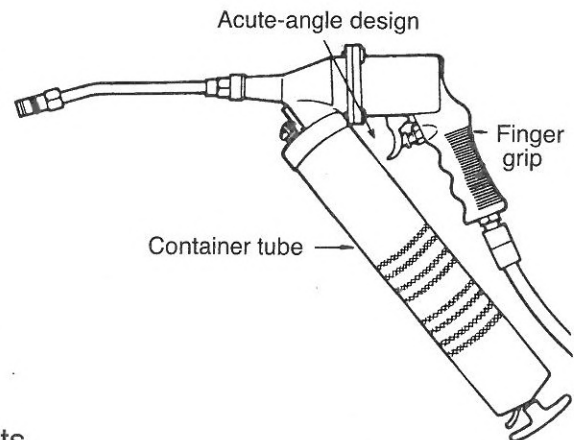


Fig. 1: AIR OPERATED
GREASE GUN

FEATURES & FUNCTIONS

- Specially ergonomics designed elegant style high quality and professional pneumatic tool. Ideal for machine, automobiles, farm and garden equipments, recreation vehicles etc.
- Heavy duty construction acute-angle featured for reduces the load distance and concentrates the center of gravity between finger grip and container tube, it is portable in operation and arm not subject to be tired. It is allow wide-angle operation in confined space and optimal clearance for air supply.
- Round plug equipped for grease loading which from grease dispenser or bucket pump.
- Rugged grip for convenient of holding and operation.
- Fine-treated surface include chrome-plated and oven-painting.
- Special designed follower to eliminate grease by-pass.
- High pressure performance with 30 to 150 psi pressure air which generated from the air compressor supplied into the air inlet, it can deliver 1200 to 6000 psi as output when trigger pressed. (40:1 pressure ratio)
- Recommended working pressure air source: 90 psi (6.2 bar)
- Trigger should be pressed thoroughly during operation.
- Add oil daily through air fitting before use.
- If you gun fails to work, it is due to air packets in the gun. To remove the air, unscrew the gun head 1 to 2 turns and acted as follow:
 - * Draw back plunger rod fully and release quickly. Repeat several times. This will help exert force to move the rubber ring to enter the cartridge and expel the air pockets which is essential for a grease gun to work. Push plunger rod all the way in. Tighten the head to the barrel.
 - * Now your grease gun is ready to use.

INSTRUCTIONS FOR THE 3 - WAY LOADING CARTRIDGE LOADING (See Fig. 2)

- (a) Remove the gun head from the container tube.
- (b) Draw back the plunger handle entirely.
- (c) Insert open end of cartridge into container tube and push all the way in. Remove the seal or pull tab end from the cartridge.
- (d) Reassemble the gun head to the container tube. Press the catch plate and release the plunger rod. Pull down the plunger handle.

LOADING WITH FILLER PUMP (See Fig. 3)

- (a) Draw back the plunger handle entirely.
- (b) Unscrew the round plug. Insert filler spout from the filler pump.
- (c) Operate the filler pump to fill the container tube.
- (d) Disconnect the grease gun from the filler pump.
- (e) Press the catch plate and release the plunger rod. Pull down the plunger handle.

BULK FILLING (See Fig. 4)

- (a) Remove the gun head from the container tube.
- (b) Draw back the plunger handle entirely. Fill bulk grease into empty container tube.
- (c) Reassemble the gun head to the container tube. Press the catch plate and release the plunger rod. Pull down the plunger handle.

- *Trigger should be pressed thoroughly during operation.
- *Oil before use and daily thru air Fitting.

IMPORTANT :

1. If the way of Cartridge loading to be used, it could be cause Rubber Plunger transfigure and contract by squeezed long time which in inside of grease cartridge, and by soak of grease a certain period.
2. At this moment, if change the loading way to Dispenser loading or Bulk loading, and then, there is a normal phenomenon that have a little amount grease is possible seep out from the bottom of Container Tube.
3. In order to avoid the above phenomenon happened, please decide use long period and a proper loading way initially (depends on the variety of grease that your local supplier applied) and use if incessantly.
(Do no use MULTI-LOADING alternately!!)
4. And now, puzzle of grease leakage been settled.



Fig. 2: Cartridge loading

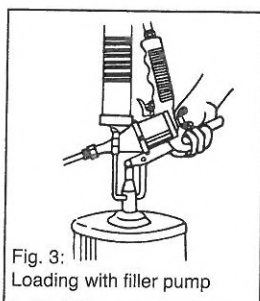


Fig. 3:
Loading with filler pump

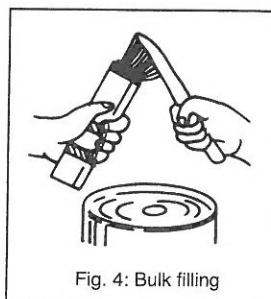
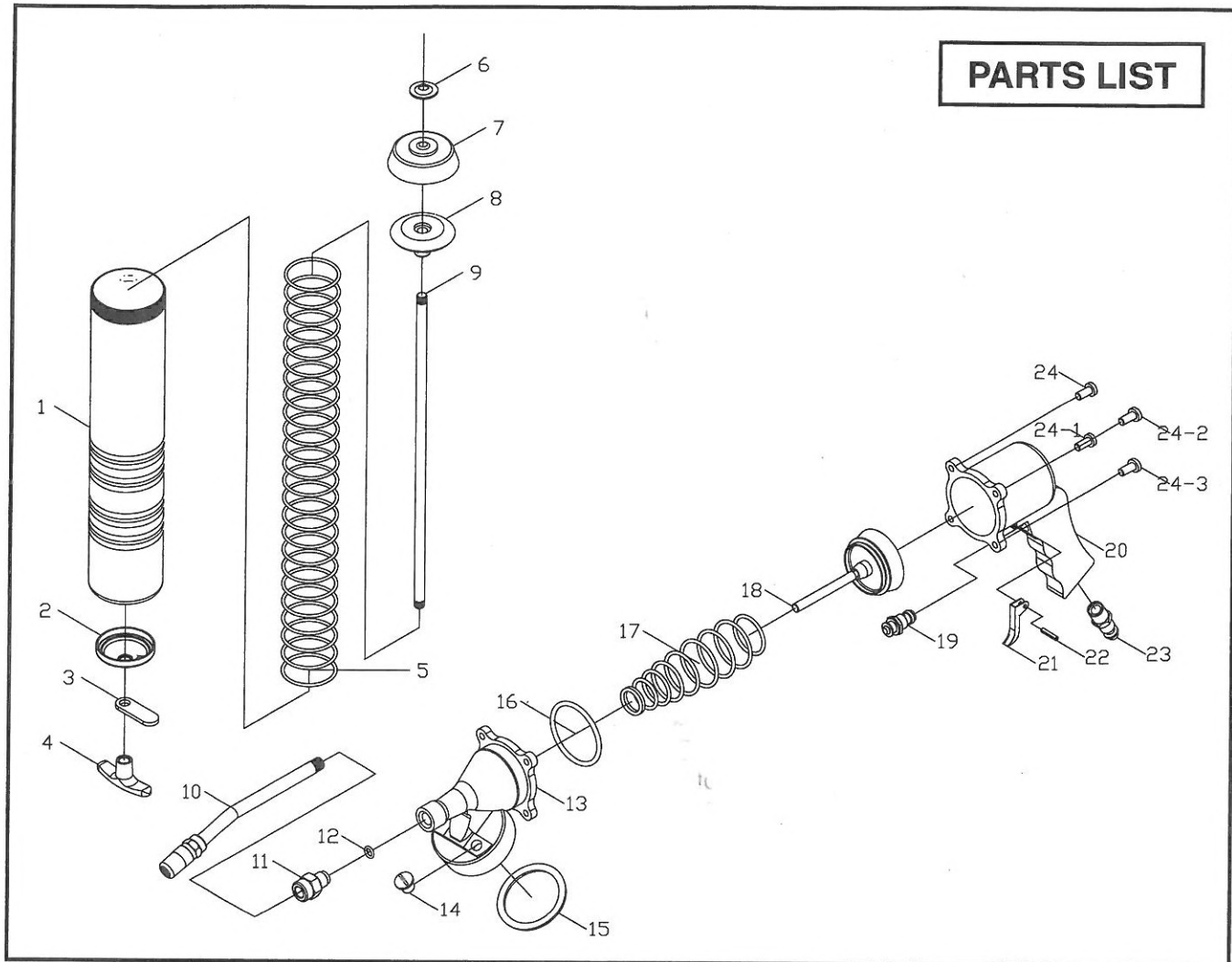


Fig. 4: Bulk filling

A-500S / A-500LS 0909-3

PARTS LIST



AIR GREASE GUN

PART NO.	DESCRIPTION	Q'TY	PART NO.	DESCRIPTION	Q'TY
1	CONTAINER TUBE	1	15	CONTAINER GASKET	1
2	BOTTOM CAP	1	16	HOUSING RING	1
3	CATCH PLATE	1	17	SHORT SPRING KIT	1
4	PLUNGER HANDLE	1	18	AIR PLUNGER	1
5	LONG SPRING KIT	1	19	SWITCH	1
6	PLUNGER WASHER	1	20	FINGER GRIP	1
7	PLUNGER	1	21	TRIGGER	1
8	PLUNGER HOLDER	1	22	PIN	1
9	PLUNGER ROD	1	23	AIR FITTING	1
10	BEND SPOUT	1	24	BODY SCREW	1
11	ADAPTER	1	24-1	BODY SCREW	1
12	ADAPTER RING	1	24-2	BODY SCREW	1
13	HOUSING CAP	1	24-3	BODY SCREW	1
14	PAINT PLUG	1			

TROUBLE SHOOTING

AIR GREASE GUN SERIES

PROBLEM	1. Tool runs obstructive and loses its prime.
POSSIBLE CAUSES	<ul style="list-style-type: none"> • Lack of oil in Air Motor.
REMEDIES	<ul style="list-style-type: none"> • Fill a few drops oil through Air inlet and run for a few minutes.
PROBLEM	2. Tool runs at normal speed but output empty.
POSSIBLE CAUSES	<ul style="list-style-type: none"> • Air pocket inside container tube.
REMEDIES	<ul style="list-style-type: none"> • Take off spout from Gun Head. • Unscrew container tube 1-2 turns from Gun Head. • Withdraw plunger rod, push plunger rod into container tube to help expel the air pockets. • Draw back plunger rod fully and release quickly. • Press trigger to check flowage of grease output fluently and without suspended. • Repeat above steps if necessary. • Re-tighten container tube to gun head firmly. • Re-screw spout securely. • Now puzzle of air pocket been settled. • Your grease gun are ready to act.
PROBLEM	3. Tool runs slowly or not running well.
POSSIBLE CAUSES	<ul style="list-style-type: none"> • Air Motor jammed with dirt particles. • Power regulator in closed position. • Air flow blocked by dirt.
REMEDIES	<ul style="list-style-type: none"> • Check air inlet filter for blockage. • Pour air tool lubricating oil into air inlet as per instructions. • Operate tool in short bursts quickly reversing rotating back and forth where applicable. • Repeat above as needed.
PROBLEM	4. Plunger do not enter the grease cartridge.
POSSIBLE CAUSES	<ul style="list-style-type: none"> • Size of cartridge not standard. • The end edge of cartridge is rough or irregular.
REMEDIES	<ul style="list-style-type: none"> • Check the size of cartridge correspond to specifications. • Grease the surround of plunger or cartridge end to help it easy to enter cartridge. • Always use standard size of cartridge. • Check the end edge of cartridge should not be damaged or folded and remains in exact round sharp. Otherwise the plunger rubber will be prevented from enter the grease cartridge and cause grease cannot be forced out from cartridge. • If this case happen correct above errors. • Do not re-use the empty grease cartridge. • Remove used cartridge from container tube when bulk loading.
PROBLEM	5. Leakage from outlet of gun head.
POSSIBLE CAUSES	<ul style="list-style-type: none"> • Spout do not screw securely.
REMEDIES	<ul style="list-style-type: none"> • The thread size feature in taper design, advantage of leakproof, screw it by tool properly and not just by hand to have well leak proof performance.