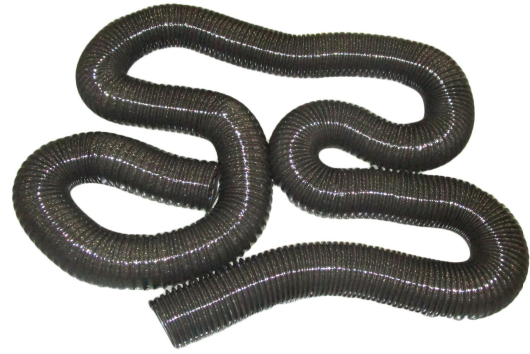




4" X 20' DUST COLLECTION HOSE

JW1032

4" x 20' Hose for JET Dust Collectors



FEATURES

- Black plastic construction
- This tough, polyethylene flexible hose, designed specially for dust collection, can be used as either a main or a branch line. It is ideal for machine hook-up.
- Universal fit accompanies all dust collectors



Learn more about clamps on our website.