

# IRWIN®

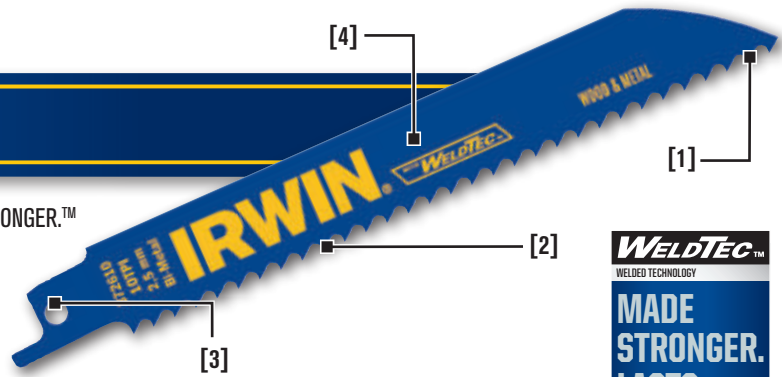
## Linear Edge



# Linear Edge

## BI-METAL RECIPROCATATING SAW BLADE FEATURES

1. Patented WeldTec™ tooth design — MADE STRONGER. LASTS LONGER.™
2. High-speed steel cutting edge with 8% cobalt stays sharper, lasts longer
3. Increased tang angle for optimal speed and cutting performance
4. Heavy-duty Bi-Metal construction extends life, increases durability, and prevents breakage



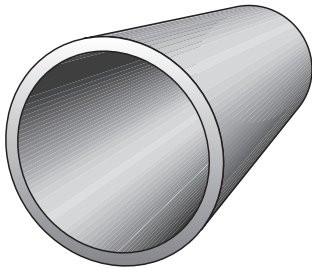
## Teeth Per Inch Selection Guide

3 TPI	6 TPI	8 TPI	10 TPI	10/14 TPI	14 TPI	18 TPI	24 TPI	GRIT
ROUGH			CUT QUALITY				SMOOTH	
FAST			CUT SPEED				SLOW	
Wood								
		Thick Metal 1-8" - 1/2"						
					Medium Metal 3/32" - 5/16"			
						Thin Metal 1/8" and Less		
								Abrasives

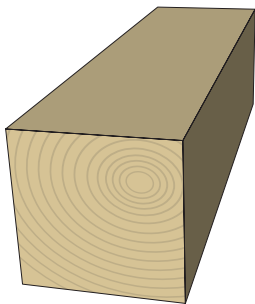
LINEAR EDGE

## Blade Length Selection Guide

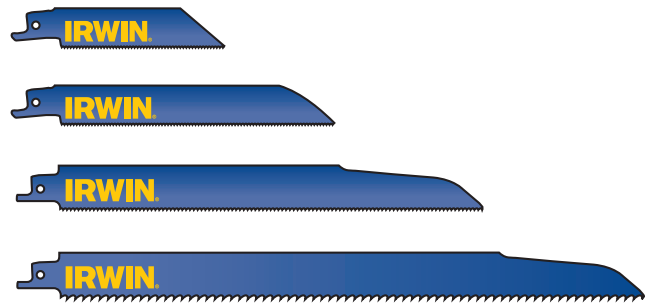
For best results, use a TPI that yields 2-3 teeth in the material at all times.



Width



Width



Width of Material + 3" = Blade Length

## Wood & Nail-Embedded Wood Cutting

WITH WELDTEC™



372656

- Great for roughing-in work and nail-embedded wood
- Fast-cutting for wood, composition materials and plastic
- Use with materials 3/16" (5 mm) and thicker

Length	TPI	Blade Thickness	Item #	Item # (5-pk)	Item # (25-pk)	Bulk # (25pk)	Bulk # (50-pk)
6"	6	.035	372606	372606P5	372606B	—	—
6"	6	.050"	372656	372656P5	372656B	372656B25	372656BB
9"	6	.050"	372956	372956P5	372956B	372956B25	372956BB
12"	6	.050"	372156	372156P5	372156B	372156B25	372156BB

## Wood & Metal Cutting

WITH WELDTEC™



372610

- Cuts nail-embedded wood, composition materials, plastic, pipe, carbon steel and stainless steel
- Use with materials 1/8" (3.2 mm) and thicker

Length	TPI	Blade Thickness	Item #	Item # (5-pk)	Item # (25-pk)	Bulk # (25-pk)	Bulk # (50-pk)
6"	10	.035"	372610	372610P5	372610B	372610B25	372610BB
8"	10	.050"	372810	372810P5	372810B	372810B25	372810BB
12"	10/14	.050"	372110	372110P5	372110B	372110B25	372110BB

## Metal Cutting

WITH WELDTEC™



372614

- Cuts all metals including non-ferrous pipe conduit, stainless and sheet metals
- Use with materials 1/8"-1/2" (3.2 -13 mm) thick

Length	TPI	Blade Thickness	Item #	Item # (5-pk)	Item # (25-pk)	Bulk # (25-pk)	Bulk # (50-pk)
4"	14	.035"	4935312	372414P5	—	—	—
4"	18	.035"	4935313	372418P5	—	—	—
4"	24	.035"	4935314	372424P5	—	—	—
6"	14	.035"	372614	372614P5	372614B	372614B25	372614BB
6"	18	.035"	372618	372618P5	372618B	372618B25	372618BB
6"	24	.035"	372624	372624P5	372624B	372624B25	372624BB
8"	18	.035"	372818	372818P5	372818B	372818B25	372818BB
12"	18	.035"	—	372118P5	—	—	—

## Demolition

WITH WELDTEC™



372966

- For heavy duty and demolition applications in wood and metal
- Use with materials 3/16" (5 mm) and thicker

Length	TPI	Blade Thickness	Item #	Item # (5-pk)	Bulk # (50-pk)
6"	6	.062"	372666	372666P5	372666BB
9"	6	.062"	372966	372966P5	372966BB
9"	10	.062"	372960	372960P5	372960BB
12"	6	.062"	4935012	4935013	4935015

## Specialty



372606C

- Designed for specialty applications, pruning and fiber cement board

Application	Length	TPI	Blade Thickness	Item #
Fiber Cement Board	6"	6 Carbide	.050"	372606C
Fiber Cement Board	8"	3 Carbide	.050"	372803C
General Purpose, Wood & Metal Cutting	6"	6 Fleam	.050"	372645F
Pruning, Fast Wood Cutting	9"	4/5 Fleam	.050"	372945F

## Reciprocating Saw Blades Set



4935496

- Contains 11 blades for the most popular cutting applications

Description	Application	Contents	Item #
11-Piece Recip Blade Set	Wood / Nail-Embedded Wood / Metal	(1) 372956, (5) 372656, (1) 372818, (4) 372614	4935496

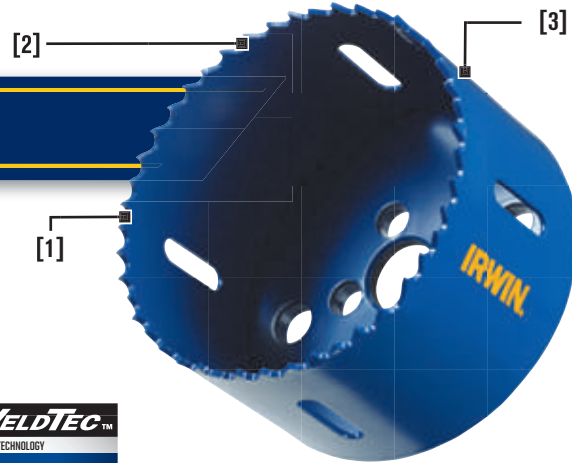
# Linear Edge

## Bi-Metal Hole Saws / Hole Saw Arbors

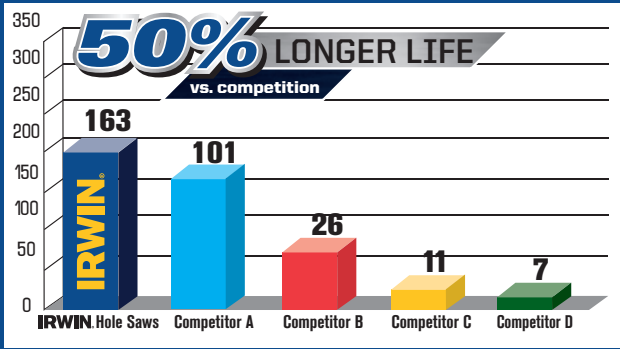
BI-METAL HOLE SAW

### FEATURES

1. Patented WeldTec™ 4.5/5.5 variable tooth design provides longer life and improves cutting performance
2. Variable depth gullets reduce friction and improve chip clearance efficiency
3. Heavy-duty Bi-Metal construction extends life and increases durability



### Hole Saw Performance (average number of cuts)



1008 Steel - .062" Thick / 200 RPM, 60 lbs. Force  
(Mode of Failure - 2 cuts at 60 seconds or 1 at 90 seconds)

**WELDTec™**  
WELDED TECHNOLOGY

**MADE STRONGER. LASTS LONGER.™**

LINEAR EDGE

Diameter	Mild Steel	Tool & Stainless	Cast Iron	Brass	Alum.
1-5/8" (41 mm)	210	105	140	280	315
1-11/16" (43 mm)	205	100	135	270	305
1-3/4" (44 mm)	195	95	130	250	295
1-13/16" (46 mm)	190	95	125	250	285
1-7/8" (48 mm)	180	90	120	240	270
2" (51 mm)	170	85	115	230	255
2-1/16" (52 mm)	165	80	110	220	245
2-1/8" (54 mm)	160	80	105	210	240
2-1/4" (57 mm)	150	75	100	200	225
2-5/16" (59 mm)	140	70	95	190	220
2-3/8" (60 mm)	140	70	95	190	220
2-1/2" (64 mm)	135	65	90	180	205
2-9/16" (65 mm)	130	65	85	175	200
2-5/8" (67 mm)	130	65	85	170	195
2-3/4" (70 mm)	125	60	80	160	185
2-7/8" (73 mm)	120	60	80	160	180
3" (76 mm)	115	55	75	150	170
3-1/8" (79 mm)	110	55	70	140	165
3-1/4" (83 mm)	105	50	70	140	155
3-3/8" (86 mm)	100	50	65	130	150
3-1/2" (89 mm)	95	45	65	130	145
3-5/8" (92 mm)	95	45	60	120	140
3-3/4" (95 mm)	90	45	60	120	135
3-7/8" (98 mm)	85	40	55	110	130
4" (102 mm)	85	40	55	110	130
4-1/8" (105 mm)	80	40	55	110	120
4-1/4" (108 mm)	80	40	55	110	120
4-3/8" (111 mm)	75	35	50	100	105
4-1/2" (114 mm)	75	35	50	100	105
4-3/4" (121 mm)	70	35	45	90	95

### Hole Saw RPM Reference Guide

Diameter	Mild Steel	Tool & Stainless	Cast Iron	Brass	Alum.
9/16" (14 mm)	580	300	400	790	900
5/8" (16 mm)	550	275	365	730	825
11/16" (17 mm)	500	250	330	665	750
3/4" (19 mm)	460	230	300	600	690
25/32" (20 mm)	425	210	280	560	630
13/16" (21 mm)	425	210	280	560	630
7/8" (22 mm)	390	195	260	520	585
15/16" (24 mm)	370	185	245	495	555
1" (25 mm)	350	175	235	470	525
1-1/16" (27 mm)	325	160	215	435	480
1-1/8" (29 mm)	300	150	200	400	450
1-3/16" (30 mm)	285	145	190	380	425
1-1/4" (32 mm)	275	140	180	360	410
1-5/16" (33 mm)	260	135	175	345	390
1-3/8" (35 mm)	285	145	190	380	425
1-7/16" (37 mm)	240	120	160	315	360
1-1/2" (38 mm)	230	115	150	300	345
1-9/16" (40 mm)	220	110	145	290	330

## Bi-Metal Hole Saws

Diameter	Pipe Entrance	Pipe Tap	Recommended RPM (In Steel)	Boxed Item #
9/16"	—	—	580	373090BX
5/8"	—	—	550	373058BX
11/16"	—	—	500	373011BX
3/4"	3/8"	1/2"	460	373034BX
13/16"	—	—	425	373013BX
7/8"	1/2"	3/4"	390	373078BX
15/16"	—	—	370	373015BX
1"	—	—	350	373100BX
1-1/16"	—	—	325	373110BX
1-1/8"	3/4"	1"	300	373118BX
1-3/16"	—	—	285	373130BX
1-1/4"	—	—	275	373114BX
1-5/16"	—	—	260	373150BX
1-3/8"	1"	—	285	373138BX
1-7/16"	—	—	240	373170BX
1-1/2"	—	1-1/4"	230	373112BX
1-9/16"	—	—	220	373190BX
1-5/8"	—	—	210	373158BX
1-11/16"	—	—	205	373111BX
1-3/4"	1-1/4"	1-1/2"	195	373134BX
1-13/16"	—	—	190	373113BX
1-7/8"	—	—	180	373178BX
2"	1-1/2"	—	170	373200BX
2-1/16"	—	—	165	373210BX
2-1/8"	—	—	160	373218BX
2-1/4"	—	2"	150	373214BX
2-5/16"	—	—	140	373250BX
2-3/8"	—	—	140	373238BX
2-1/2"	2"	—	135	373212BX
2-9/16"	—	—	130	373290BX
2-5/8"	—	2-1/2"	130	373258BX
2-3/4"	—	—	125	373234BX



Diameter	Pipe Entrance	Pipe Tap	Recommended RPM (In Steel)	Boxed Item #
2-7/8"	—	—	120	373278BX
3"	2-1/2"	—	115	373300BX
3-1/8"	—	—	110	373318BX
3-1/4"	—	3"	105	373314BX
3-3/8"	—	—	100	373338BX
3-1/2"	—	—	95	373312BX
3-5/8"	3"	—	95	373358BX
3-3/4"	—	3-1/2"	90	373334BX
3-7/8"	—	—	85	373378BX
4"	—	—	80	373400BX
4-1/8"	3-1/2"	—	80	373418BX
4-1/4"	—	—	75	373414BX
4-3/8"	—	—	75	373438BX
4-1/2"	—	4-1/2"	70	373412BX
4-3/4"	—	—	65	373434BX
5"	—	—	180	373500BX
5-1/2"	—	—	60	373512BX
6"	—	—	55	373600BX

LINEAR EDGE

## Bi-Metal Hole Saw Kits



3073004

- Kits include bi-metal hole saws, arbors, and pilot drill bit

Description	Contents	Item #
9-Piece Plumber's Kit	3/4", 7/8", 1-1/8", 1-1/2", 1-3/4", 2-1/4, 1/2" Hex, 3/8" Hex, Pilot Drill	3073002
9-Piece Electrician's Kit	7/8", 1-1/8", 1-3/8", 1-3/4", 2", 2-1/2", 1/2" Hex, 3/8" Hex, Pilot Drill	3073003
17-Piece General Purpose Kit	5/8", 3/4", 7/8", 1", 1-1/8", 1-1/4", 1-3/8", 1-1/2", 1-3/4", 2", 2-1/2", 3", 1/2" Hex, 1/2" Hex, Pilot Drill (3)	3073004

## Hole Saw Arbors



373002

- Tough, durable construction
- For 3/8" and 1/2" drill chucks
- Removable pilot drill for easy replacement

Shank Size	Shank Type	Fits Hole Saw Sizes	Pin Driven	Item #
3/8"	Standard Hex	9/16" - 1-3/16"	No	373001
1/2"	Standard Hex	9/16" - 1-3/16"	Yes	373002
3/8"	Standard Hex	1-1/4" - 6"	No	373003
1/2"	Standard Hex	1-1/4" - 6"	Yes	373004
1/4"	Quick-Change Hex	9/16" - 1-3/16"	No	373005
N/A	—	1/4" Replacement Pilot Drill	—	373000

# Linear Edge

## Door Lock Kits / Jigsaw Blades / Portable Band Saw Blades

### Door Lock Installation Kits



3111002 (3111002C\*)

- Self-centering jig fits all common door widths
- Adjustable for both 2-3/8" and 2-3/4" backsets
- Complete installation in 3 easy steps

### Jig Saw Blades



3071412



3072410D

- Wood cutting: precision-ground teeth for fast smooth cutting in hard and soft wood, plastics, laminate particle board and plywood
- Metal cutting: fully hardened teeth for cutting ferrous and non-ferrous metals, aluminum and sheet steel

LINEAR EDGE

Door Width	Backset	Door Type	Hole Saw Type	U.S. Item #	Canadian Item #
1-1/4" or 1-3/4"	2-3/8" or 2-3/4"	Wood	Carbon Steel	3111001	3111001C
1-1/4" or 1-3/4"	2-3/8" or 2-3/4"	Wood or Metal	Bi-Metal	3111002	3111002C

Blade Length	TPI	Blade Material	Tooth Design	Carded Item # (2-pk)
<b>U-Shank</b>				
3"	—	5/32 Carbide Grit	—	3071300
3-1/4"	10	Bi-Metal	Milled	3071314
3-1/4"	20	Bi-Metal	Milled	3071320
3-1/4"	36	Bi-Metal	Milled	3071336
4"	6	Carbon	Fleam Ground	3071406
4"	10	Carbon	Milled	3071410
4"	10	Carbon	Fleam Ground	3071412
4"	10	Carbon	Fleam Ground	3071410D
6-Piece Assorted	Includes: (1) 3071320, (1) 3071314, (1) 3071406, (1) 3071412, (2) 3071410,			3071001
<b>T-Shank</b>				
3"	—	5/32 Carbide Grit	—	3072300
3"	10	Bi-Metal	Milled	3072314
3"	20	Bi-Metal	Milled	3072320
3"	36	Bi-Metal	Milled	3072336
4"	6	Carbon	Fleam Ground	3072406
4"	10	Carbon	Milled	3072410
4"	10	Carbon	Fleam Ground	3072412
4"	10	Carbon	Fleam Ground	3072410D
6-Piece Assorted	Includes: (1) 3072320, (1) 3072314, (1) 3072406, (1) 3072412, (2) 3072410,			3072001

### Portable Band Saw Blades



3074000P3

- Shatter resistant, bi-metal construction for extended life
- 8% Cobalt content for added durability
- Electron beam weld construction provides flexibility

Blade Length	TPI	Height	Blade Thickness	Item # (3-pk)	Bulk # (25-pk)
44-7/8"	10/14	1/2"	.020"	3074000P3	3074000P25
44-7/8"	14	1/2"	.020"	3074001P3	3074001P25
44-7/8"	18	1/2"	.020"	3074002P3	3074002P25
44-7/8"	24	1/2"	.020"	3074003P3	3074003P25
44-7/8"	14/18	1/2"	.020"	3074004P3	3074004P25

### Portable Band Saw Matrix

Blade Length	TPI	Recommended Thickness
44-7/8"	14	1/4" to 1/2"
44-7/8"	18	1/8" to 1/4"
44-7/8"	24	3/32" to 1/8"
44-7/8"	14/18	1/8" to 1/2"

Application	IRWIN <sup>®</sup> #	Length	TPI	LENOX	Bosch	Dewalt	Milwaukee	Morse
Metal Cutting	372414P 372414P5	4"	14	20550-414R 20488-B414R 20551-S414R	S518B S522AF S522BF	DW4807 DW4807B	48-01-5181, 48-00-5181, 48-01-6181, 48-00-1172, 48-01-1181, 48-00-1181, 48-02-1181	RB41014P, RB41014B, RB414B, RB414P, RB414C, RH414B, RH414P
	372418P 372418P5	4"	18	20552-418R 20489-B418R	S518E S522EF	DW4810	48-01-5183, 48-00-5183, 48-01-6183, 48-01-1183, 48-02-1183, 48-00-1183, 48-00-1174	RB418P, RB418B, RB418C, RH418B, RH418P
	372424P2 372424P5	4"	24	2055-424R 20490-B424R 20555-S424R	S518EF S518G	DW4812	48-10-5185, 48-00-5185, 48-01-6185, 48-01-1185, 48-00-1185, 48-00-1176, 48-00-1185	RB424B, RB424HP, RB424C, RH424B, RH424P
	372614 372614P5 372614B	6"	14	20564-614R 20494-B614R 20565-S614R	S918BF S918B S922BF	DW4808 DW4808B	48-01-5182, 48-02-5182, 48-00-5182, 48-01-6182, 8-01-5282, 48-00-5282, 48-01-6282, 48-01-1182, 48-02-1182, 48-00-1182, 48-00-1179	RB614B, RB614P, RB614C, RH614B, RH614P
	372618 372618P5 372618B	6"	18	20566-618R 20529-B618R 20567-S618R	S918EF S918E S922EF	DW4811 DW4811B DW4878	48-01-5184, 48-02-5184, 48-00-5184, 48-01-6184, 48-01-6184, 48-01-5284, 48-00-5284, 48-01-6284, 48-01-1184, 48-02-1184, 48-00-1184, 48-00-2170	RB618B, RB618C, RB618P, RH618B, RH618P
	372624 372624P5 372624B	6"	24	20568-624R 20496-B624R 20569-S624R	S918A S922AF	DW4813	48-01-5186, 48-02-5186, 48-00-5186, 48-01-6186, 48-01-5286, 48-00-5286, 48-01-1186, 48-02-1186, 48-00-2171	RB624B, RB624P, RB624C, RH624B, RH624P
	372810 372810P5 372810B	8"	10	20580-810R 20590-B810R 20581-S810R	S1018H S1122HF	DW4865 DW4865B	48-01-5093, 48-02-5093, 48-00-5093, 48-01-6093, 48-01-5193, 48-00-5193, 48-01-6193, 48-01-3093, 48-02-3093, 48-00-2175, 48-00-5713, 48-00-8713	RB8501014B, RB8501014P, RB8501014C, RB810B, RB810P, RB81014B, RB81014P, RB81014C
	372818 372818P5 372818B	8"	18	20578-818R 20487-B818R 20563-S618R	S1122EF	DW4921	48-01-5188, 48-02-5188, 48-00-5188, 48-01-6188, 48-00-5788, 48-00-8788	RB818B, RB818P, RB814B, RB814P, RB814C
	372118P5	12"	18	21510-118R 21511B118R			48-015189	RB1218P
	Wood Cutting	372606 372606P5 372606B	6"	6	2056-606R 20492-B606R 20559-S606R	S811DF S811D S828D	DW4850	48-00-5012, 48-01-5012, 48-01-6012
Metal and Wood Cutting	372610 372610P5 372610B	6"	10	20562-610R 20493-B610R 20561-S61	S811HF S811H S922VF	DW4845 DW4806 DW4806B DW4877	48-01-5092, 48-02-5092, 48-00-5092, 48-01-6092, 48-01-3092, 48-02-3092, 48-00-1064	RB610B, RB610P, RB610C, RB61014B, RB61014P, RC610B, RC610C
	372110 372110P5 372110B	12"	10	20583-110R 20491-B110R 20584-S110R	S1211H S1222VF	DW4838	48-01-5094, 48-02-5094, 48-00-5094, 48-01-6094, 48-01-5194, 48-00-5194, 48-01-6194, 48-01-3094, 48-02-3094	RB12501014B, RB12501014P, RB12501014C, RB121014P, RB121014B, RB1214P
	372606C	6"	6	20596-6565RCT				RTCT606ST25, RTCT606SC
Nail Embedded Wood Cutting	372656 372656P5 372656B	6"	6	20572-656R 20530-B656R 20573-S656R	S611DF S644D S611VF S644DF	DW4847 DW4848B DW4802 DW4802B DW4876	48-01-5031, 48-02-5031, 48-00-5031, 48-01-6031, 48-01-5035, 48-02-5035, 48-00-5035, 48-01-6035, 48-00-5015, 48-01-3031, 48-02-3031, 48-00-3031, 48-01-3035, 48-02-3035, 48-00-3035, 48-01-1012, 48-02-1012, 48-00-1031	RB63506B, RB53606P, RC606STB, RC606B, RB65006B, RB65006P, RB65006C, RC606STP
	372956 372956P5 372956B	9"	6	20582-956R 20558-B956R 20587-S956R	S1544DF S1511DF	DW4848 DW4803 DW4803B	48-01-5036, 48-02-5036, 48-00-5036, 48-01-6036, 48-00-5016, 48-00-3036, 48-01-3036, 48-00-1033, 48-02-3036	RB95006B, RB93500B, RC905B, RB95006P, RB035006P, RC905P, RB95006C, RB906B, RC900P
	372156 372156P5 372156B	12"	6	20585-156R 205495-B156R 20586-S156R	S1344D S1411DF S1344DF	DW4849 DW4804 DW4804B	48-01-5037, 48-02-5037, 48-00-5037, 48-01-6037, 48-00-5017, 48-01-3037, 48-02-3037, 48-00-3037, 48-00-1032, 48-00-1302	RB125006, RC1206C, RB125006P, RC1206P, RB125006C, RB123506B, RB123506P
Demolition	372666 372666P5	6"	6	20512-6066R 20614-B6066R	-	DW4862	48-00-5021, 48-00-8021	RB66206T20, RB66206T3
	372966	9"	6					
	372960 372960P5	9"	10	20597-960R 20524-B960R	-	DW4865 DW4865B	-	RB96210T20, RB96210T3
		12"	6					

LINEAR EDGE