



#9072/9072A  
**DIESEL EXHAUST FLUID  
(DEF) TRANSFER SYSTEM**

---

## Operator's Manual

---



Available with 12', or  
20' Output Hoses and  
Manual or Automatic  
Shut-Off Nozzles



**9 gpm 12V DC Pump for Transferring Diesel  
Exhaust Fluid (DEF)**

**WARNING: Not for Use with Gasoline or Other Highly Volatile Fluids**



## LETTER FROM THE PRESIDENT OF IPA®

My name is Peter Vinci and I would like to thank you for your interest in our products. In today's world, we have all experienced the lack of service and consideration demonstrated by many companies after you buy their products. They say whatever they can to make the sale, and then it's like pulling teeth to get any service response out of them. I know this myself firsthand and because of this, I want to be sure that your experience with IPA® meets your expectations and that IPA® never disappoints you with our service or customer response.

Your satisfaction is more important to me than the sale itself. We will not be in business for long if we don't make you completely happy with our products and service. I want IPA® to be different and be known for its quality and service.

With that said, please take a look at our product line. You will see innovative firsttime products that were created to help you do your job faster and better than before. I would also like to invite you to critique our products. If you can think of a better way to make them or changes that will make them work better, please contact me directly and I will be sure to look into it. If you have an innovation and would like some feedback, give me a call.

From all of us at IPA®, we thank you for taking the time to review our product line and wish you and your family the very best of everything.

## PROBLEMS AND SOLUTIONS

Problem	Possible Cause	Solutions
Motor is not turning	Lack of electric power	Check the electrical connection
The motor turns slowly when starting	Check power supply	Contact manufacturer

## Related Products

### #9071 DEF Recovery Wand Kit



5' flexible wand with quick disconnect fittings designed to reach the bottom of DEF tanks. (Optional accessory for #9070/9070A units)

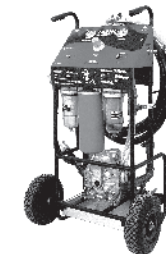
## Fuel Transfer & Filtration

### #9046M Fleet Tank Sweeper® (120V AC)



A compact, portable fuel transfer and filtration system with input and output hoses along with special attachments for accessing saddle tanks and 55-gallon drums.

### #9046F Pneumatic Tank Sweeper®



A complete turnkey solution for servicing contaminated fuel oil systems - quickly filters, polishes and transfers.

### #DTP20C 12V Industrial Fuel Cleaner and Transfer System



A DC-powered mobile fuel transfer system that provides efficient and accurate diesel fuel transfer and filtration in a highly mobile package.

**ATTENTION! THE MOTORS ARE NOT OF AN ANTI-EXPLOSIVE TYPE. Do not install them where flammable vapors may be present.**

### CONNECTING

To ensure leak free connection, please follow these directions:

- Step 1:** Disassemble barb fitting, removing barb fitting from lock nut.
- Step 2:** Lubricate O-ring on barb fitting with dielectric grease to ease installation.
- Step 3:** Re-install barb fitting into female fitting.
- Step 4:** Secure with locking nut, turning clockwise until hand tight.
- Step 5:** Install output hose to barb fitting using hose clamp (ensure even cut end on hose).

### DISPENSING

After installation of the pump system is complete, connect the power supply and start dispensing.

**ATTENTION! It is the installer's responsibility to use tubing with adequate characteristics. Loosening of the connections (threaded connections, flanging, gasket seals) can cause serious ecological and safety problems. Check all the connections after the initial installation and continue to check them on a daily basis. Tighten the connections if necessary.**

### DAILY USE

- If using flexible tubing, attach the ends of the tubing to the tanks. In the absence of an appropriate slot, solidly grasp the delivery tube before beginning to dispense.
- Before starting the pump, make sure that the nozzle is closed (dispensing nozzle or line valve).
- Turn the ON/OFF switch to ON. The bypass valve allows functioning with the nozzle closed only for brief periods.
- Close the nozzle to stop dispensing.
- When dispensing is finished, turn off the pump.

**ATTENTION! Function with the delivery valve closed is only allowed for brief periods (2-3 minutes maximum). After using, make sure the pump is turned off.**

### MAINTENANCE

All models are designed and constructed to require minimum maintenance. Always bear in mind the following basic recommendations to ensure proper performance:

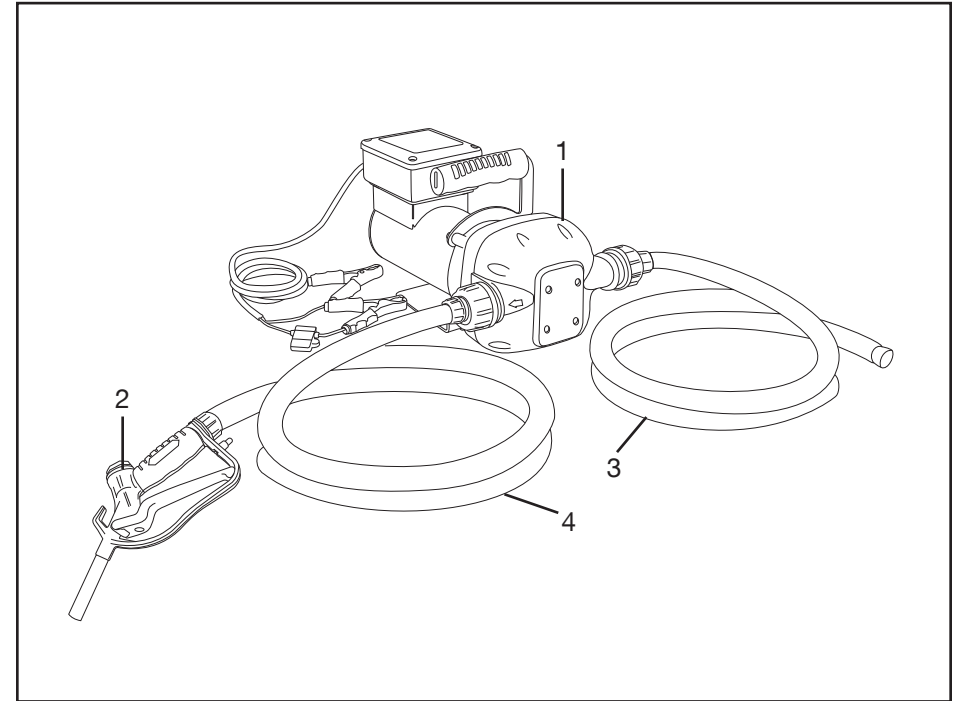
- On a weekly basis, check that the tubing joints have not loosened to avoid any leakage.
- On a weekly basis, check and keep clean the line suction filter.
- On a monthly basis, check the pump body and keep it clean of any impurities.
- On a monthly basis, check that the electric power supply cables are in good condition.

### DISPOSING OF CONTAMINATED MATERIALS

In the event of maintenance or demolition of the machine, do not disperse contaminated parts into the environment. Refer to local regulations for their proper disposal.

## #9072/9072A DIESEL EXHAUST FLUID (DEF) TRANSFER SYSTEM SERIES PARTS

Fig. 1 - Parts Diagram



	Part Number	Description	Unit
1	#PMP00010-1AS	120V DC Pump	All
2	#009070-DEFNOZ	Manual Transfer Nozzle	9072 Units
	#009070-DEFNOZA	Automatic Shut-Off Nozzle	9072A Units
3	#HS-IN9072-AS	6' Black Input Hose	All
4	#HS-12OUT9072	12' Black Output Hose	9072
	#HS-20OUT9072	20' Black Output Hose	9072-20
	#HS-12OUT9072A	12' Black Output Hose	9072A
	#HS-20OUT9072A	20' Black Output Hose	9070A-20

## IMPORTANT SAFETY INSTRUCTIONS

IT IS IMPORTANT TO READ, UNDERSTAND AND FOLLOW ALL SAFETY MESSAGES AND INSTRUCTIONS PRINTED IN THIS MANUAL AND ON THE EQUIPMENT BEFORE OPERATING. IF SAFETY INFORMATION IS NOT HEEDDED, DEATH OR SERIOUS INJURY TO THE OPERATOR OR BYSTANDERS MAY OCCUR.

### DANGER

Indicates a hazardous situation that if not avoided, will result in death or serious injury. The possible hazards are shown in the adjoining symbols or explained in the text.

### WARNING

Indicates a hazardous situation that if not avoided, could result in death or serious injury. The possible hazards are shown in the adjoining symbols or explained in the text.

### CAUTION

Indicates a hazardous situation that if not avoided, may result in minor or major injury. The possible hazards are shown in the adjoining symbols or explained in the text.



POTENTIAL EYE HAZARD: Wear OSHA approved safety glasses.



POTENTIAL SKIN IRRITATION/BURN HAZARD: Wear protective gloves.



POTENTIAL ELECTRIC HAZARD: Electrical energy can cause heat and burn hazards.

## OPERATING CONDITIONS

### ENVIRONMENTAL CONDITIONS

Temperature: Min. -10°C (14°F) / Max. +60°C (140°F)

Relative Humidity: Max. 90%

**ATTENTION!** The temperature limits shown apply to the pump components and must be respected to avoid possible damage or malfunction.

### POWER SUPPLY - 12V DC BATTERY

## WORKING CYCLE

The pump is designed for continuous use under maximum back pressure.

**ATTENTION!** Functioning under bypass conditions is only allowed for brief periods of time (2-3 minutes maximum).

## FLUIDS PERMITTED

- Chemical products: diesel exhaust fluid, urea, weak acid and weak alkaline fluid, etc.
- Water

**WARNING!** For use with permitted fluids only. Do not use to transfer any hard contaminants such as rocks, leaves, etc. This can damage the pump and void the warranty.

**WARNING!** Do not operate with caps installed or bodily injury can result.

## SPECIFICATIONS

**Pump Type:** Rotary Diaphragm

**Pump Req:** 12V DC (18 Amp)

**Flow Rate:** 9 gpm

**Input:** 3/4" Dia., 6' Long

**Output:** 3/4" Dia., 12' Long - 9072-12/9072A-12  
20' Long - 9072-20/9072A-20

**Nozzle Type:** Manual (9070 units)  
Automatic Shut-Off (9070A units)

## INSTALLATION

### PRELIMINARY INSPECTION

- Check for any damage on the machine that may have occurred during transport.
- Clean the input and output openings, removing any dust or residual packing material.
- Make sure that the motor shaft turns freely.
- Check that the electrical specifications correspond to those shown on the identification plate.