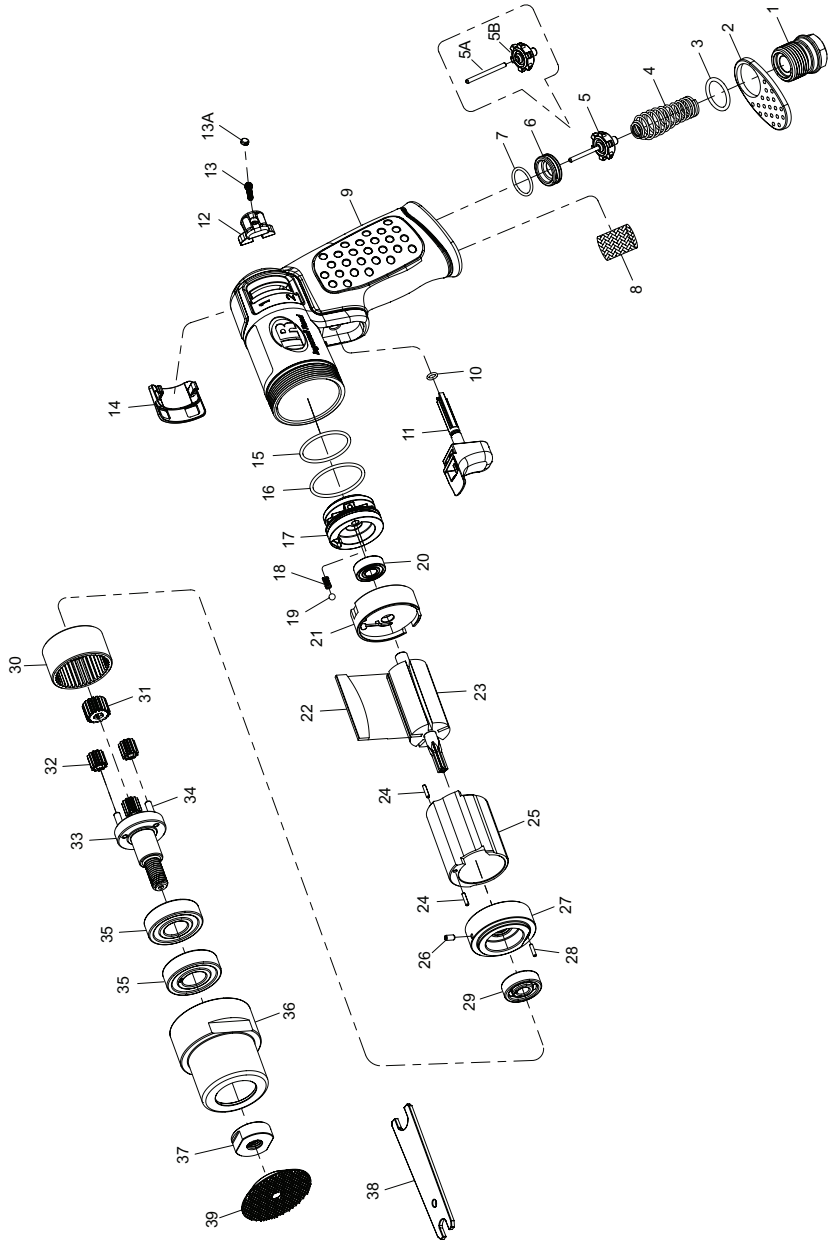


# 3129XPA Mini Polisher - Exploded View



(Dwg. 47520792001)



## 3129XPA Mini Polisher - Parts List

Item	Part Description	Part Number	(CCN)	Item	Part Description	Part Number	(CCN)
1	Air Inlet with Screen	2101XPA-A465	(47520794001)	17	Power Valve	3129XPA-329	(47520909001)
2	Exhaust Deflector	2101XPA-23	(47520795001)	18	Spring	2101XPA-250	(47520812001)
3	O-Ring	2101XPA-65	(47520796001)	19	Steel Ball	2101XPA-722	(47520813001)
4	Spring	2101XPA-51	(47520797001)	20	Ball Bearing	7804XPA-105	(47520853001)
5	Throttle Valve Assembly	2101XPA-A302	(47520798001)	21	Rear End Plate	3129XPA-12	(47520910001)
5A	Throttle Valve Pin	--	--	22	Rotor Blade (5)	2101XPA-42-5	(47520816001)
5B	Throttle Valve	--	--	23	Rotor	3129XPA-53	(47520911001)
6	Throttle Valve Seat	2101XPA-303	(47520799001)	24	Spring Pin (2)	2101XPA-120-2	(47520818001)
7	O-Ring	2101XPA-65A	(47520800001)	25	Cylinder	3129XPA-3	(47520912001)
8	Muffler Element	2101XPA-674	(47520801001)	26	Spring Pin	2101XPA-15	(47520820001)
9	Motor Housing Assembly for 3129XPA	3129XPA-A40	(47520782001)	27	Front End Plate	7804XPA-11	(47520855001)
	Motor Housing	3129XPA-40	(47520908001)	28	Spring Pin	7804XPA-15	(47520856001)
	Model Label	3129XPA-301	(47512913001)	29	Ball Bearing	7804XPA-97	(47520857001)
	Warning Label	3103XPA-99	(47512916001)	30	Internal Gear	3129XPA-9	(47520913001)
10	O-Ring	2101XPA-65B	(47520803001)	31	Pinion Gear	3129XPA-9A	(47520914001)
11	Trigger	2101XPA-93	(47520804001)	32	Idle Gear (3)	3129XPA-9B-3	(47520915001)
12	Reverse Knob	2101XPA-329A	(47520805001)	33	Working Spindle	3129XPA-8	(47520916001)
13	Screw	2101XPA-638	(47520806001)	34	Pin (3)	3129XPA-120-3	(47520917001)
13A	Plug	2101XPA-34	(47520807001)	35	Ball Bearing (2)	3129XPA-97-2	(47520918001)
14	Reverse Plate	2101XPA-851	(47520808001)	36	Gear Housing	3129XPA-338	(47520919001)
15	O-Ring	2101XPA-65C	(47520809001)	37	Spindle Nut	3129XPA-27	(47520920001)
16	O-Ring	2101XPA-65D	(47520810001)	38	Spanner Wrench	3129XPA-253	(47520921001)
				39	3" Pad	03H-PAD-HL	(80199136)

## Parts and Maintenance

When tool life has expired, it is recommended that the tool be disassembled, degreased and parts separated by material for proper recycling.

Tool repair and maintenance should only be carried out by an authorized Service Center.

Refer all communications to the nearest **Ingersoll Rand** office or distributor.

## Related Documentation

Manuals can be downloaded from [ingersollrandproducts.com](http://ingersollrandproducts.com)

For additional information, refer to:

Product Safety Information Manual 04580387.

Product Information Manual 47520890001.