

USA Product Recall

Hydro-Gear is recalling certain hydrostatic transaxles used in Troy-Bilt riding mowers due to injury risk to the operator. Consumers should stop using the product immediately.

Hydro-Gear has identified a limited number of transaxles manufactured late in 2010 whose drive gear may fail causing the drive system to lose the ability to brake effectively, posing an injury risk to the consumer.

Consumers that have mowers with these suspect transaxles should stop using the product immediately and arrange to replace the transaxle.

Identify if your riding mower and transaxle are in the recall range.

STEP 1

Tractor Identification

(see tables for affected models)

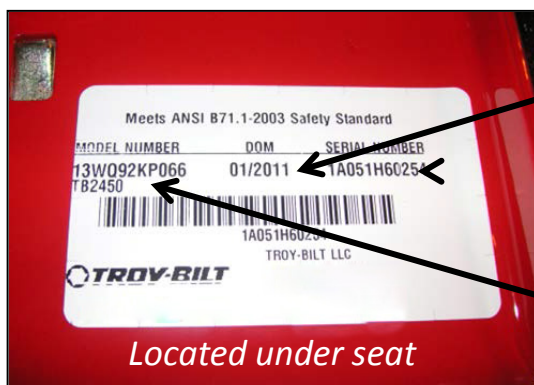


Mower Brand

1a

Mower Type

1b



Date of
manufacture
(DOM)

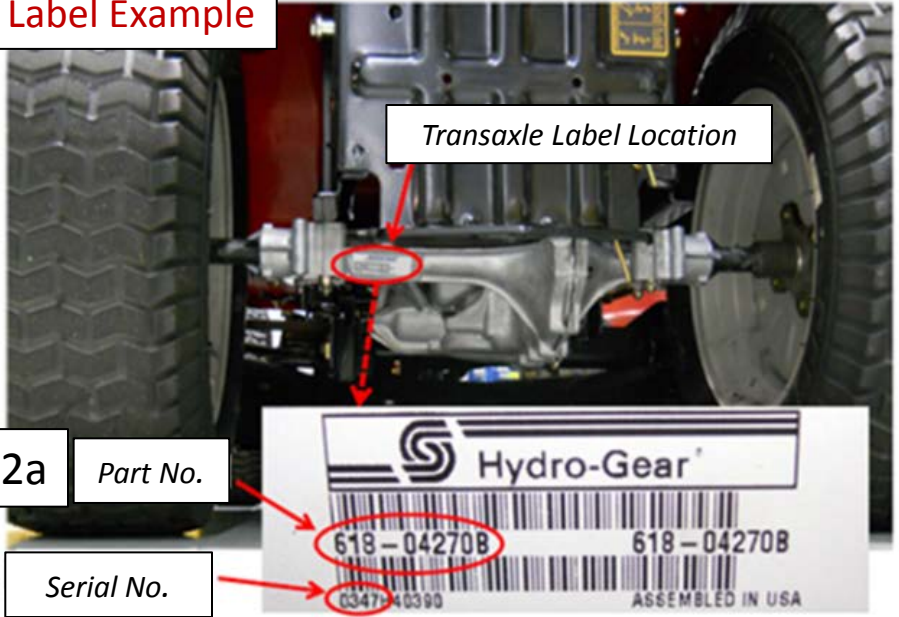
1c

Model Number:

1d

Located under seat

Label Example



STEP 2

Transaxle Identification
(see tables for affected models)

2a Part No.

2b Serial No.

Step 1.
Identify the mower

Step 2.
Identify the transaxle

1a	1b	1c	1d	-	2a	2b
Mower Brand	Mower Type	DOM	Mower Model No.	Retailer	Transaxle Part No.	Transaxle Serial No. (1 st four digits)
Troy-Bilt	Big Red TB2450	01/2011	13WQ92KP066	Troy-Bilt Dealers	618-04270B	0333 thru 0348

STEP 3-Contact an authorized service provider to arrange a service appointment for a free transaxle replacement

USA Product Recall

Hydro-Gear is recalling certain hydrostatic transaxles used in Cub Cadet riding mowers due to injury risk to the operator. Consumers should stop using the product immediately.

Hydro-Gear has identified a limited number of transaxles manufactured late in 2010 whose drive gear may fail causing the drive system to lose the ability to brake effectively, posing an injury risk to the consumer.

Consumers that have mowers with these suspect transaxles should stop using the product immediately and arrange to replace the transaxle.

Identify if your riding mower and transaxle are in the recall range.

STEP 1

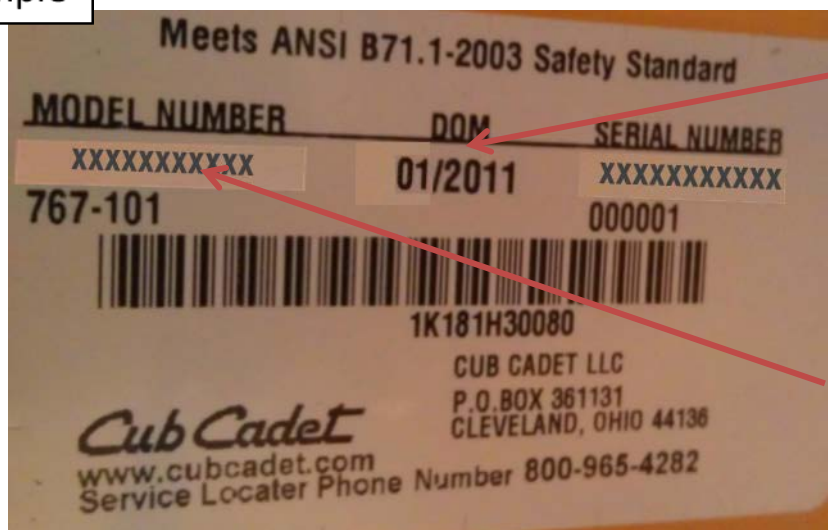
Tractor Identification
(see tables for affected models)



1a
Mower Brand

1b
Mower Type

Label Example



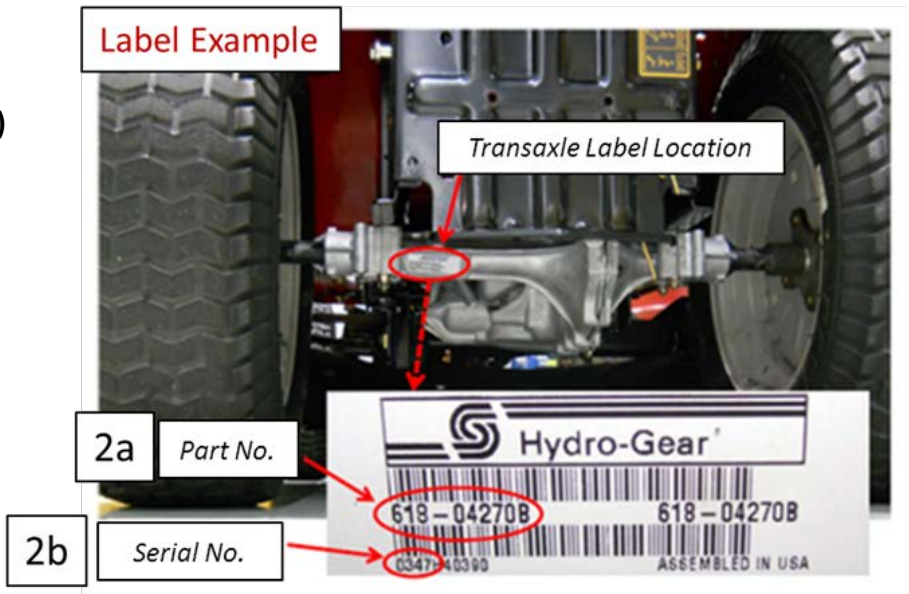
1c
DOM (date of manufacture).

1d
Model Number:

(Located under seat)

STEP 2

Transaxle Identification
(see tables for affected models)



Step 1.
Identify the mower

Step 2.
Identify the transaxle

1a	-	1b	1c	1d	2a	2b
Mower Brand	Retailer	Mower Type	DOM	Mower Model No.	Transaxle Part. No	Transaxle Serial No. (1 st four digits)
Cub Cadet	Home Depot	LTX1045	01/2011 thru 03/2011	13WX91AT056	618-0319	0333 thru 0348
		LTX1050KW		13WF91AP056	618-0319	
		SLTX 1054		13WK92AK056	618-04270B	
Cub Cadet	Tractor Supply Company	LTX1046M	01/2011 thru 03/2011	13WP91AT009	618-0319	0333 thru 0348
		LTX1050KH		13WQ91AP009	618-0319	
		SLTX1054		13WK92AK009	618-04270B	
Cub Cadet	Cub Cadet Dealer	LTX 1045	01/2011 thru 03/2011	13WX91AT010	618-0319	0333 thru 0348
		LTX1046 KW		13WG91AT010	618-0319	
		LTX1050 KW		13WF91AP010	618-0319	
		SLTX 1050		13WQ92AP010	618-04270B	
		SLTX 1054		13WK92AK010	618-04270B	

STEP 3-Contact an authorized service provider to arrange a service appointment for a free transaxle replacement.

USA Product Recall

Hydro-Gear is recalling certain hydrostatic transaxles used in MTD Gold riding mowers due to injury risk to the operator. Consumers should stop using the product immediately.

Hydro-Gear has identified a limited number of transaxles manufactured late in 2010 whose drive gear may fail causing the drive system to lose the ability to brake effectively, posing an injury risk to the consumer.

Consumers that have mowers with these suspect transaxles should stop using the product immediately and arrange to replace the transaxle.

Identify if your riding mower and transaxle are in the recall range.

STEP 1

Tractor Identification (see tables for affected models)



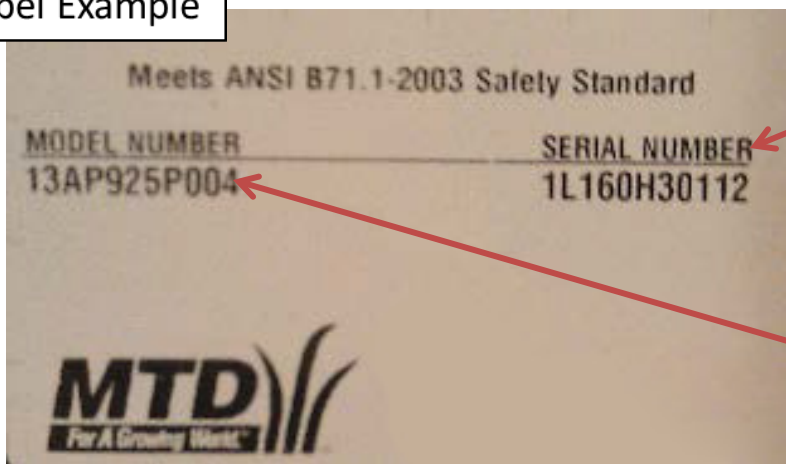
Mower Brand

1a

Mower Type

1b

Label Example



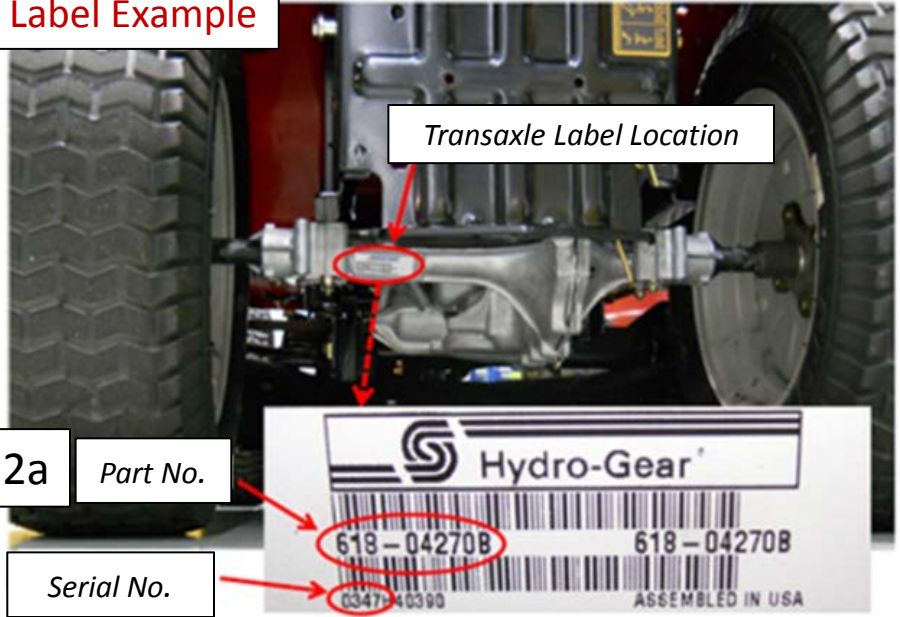
Serial No.

1c

Model Number:

1d

Label Example



STEP 2

Transaxle Identification
(see tables for affected models)

2a Part No.

2b Serial No.

Step 1.
Identify the mower

Step 2.
Identify the transaxle

1a	1b	1c	1d	-	2a	2b
Mower Brand	Mower Type	Serial No.	Mower Model No.	Retailer	Transaxle Part No.	Transaxle Serial No. (1 st four digits)
MTD Gold	Hydro	Begins with 1L15 or 1L16	13AP925P004	*See list below	618-04270B	0333 thru 0348

***Retailers:** Rural King, Midland, Do-It-Best, Atwood's, Farmer Union Oil, True Value , Koch's Hardware Hank, Home Hardware, Farm King, Power Equipment, Big R, Fleet & Farm, Billy Price, Southern Hardware, Direct Buy, Phelps Merchandise.

STEP 3-Contact an authorized service provider to arrange a service appointment for a free transaxle replacement.