

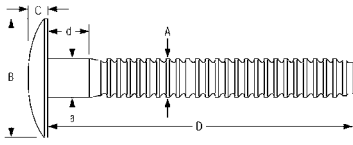


BYLERRIVET

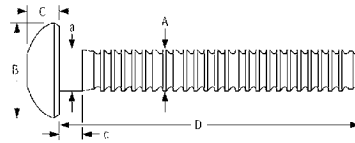


HUCK

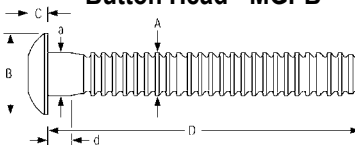
HUCK



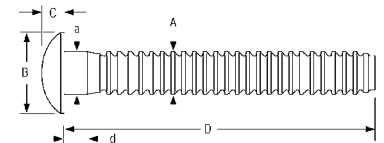
Broad Truss Head - MGP30



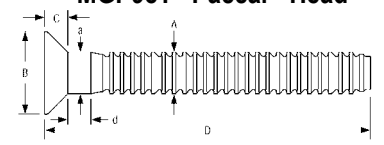
Button Head - MGPB



Truss Head - MGPT



MGP98T "Paccar" Head



90° Flush Head - MGP90

TYPE OF RIVET	DIA.	MFG. PART NO.	BYLER PART NO.	GRIP RANGE	RIVET DIMENSIONS				MIN. VALUES IN LBS.			
					A	B	C	D	a-ref	d-ref	SHEAR	TENSILE
BUTTON HEAD Aluminum	3/16	MGPB-E6-10	430114090610	.062-.625	.183-.187	.356-.394	.113-.125	1.788	.191-.195	.114	750	900
	1/4	MGPB-E8-10	430114090810	.062-.625	.245-.249	.475-.525	.136-.152	1.965	.250-.259	.125	1200	1620
	5/16	MGPB-E10-12	430114091012	.125-.750	.307-.311	.594-.656	.181-.201	2.34	.274-.283	.250	2200	2500
	3/8	MGPB-E12-14	430114091214	.125-.875	.369-.375	.713-.787	.223-.248	2.875	.380-.385	.188	3000	4000
MGP98T HEAD Aluminum	3/16	MGP98T-E6-10	430114040610	.062-.625	.183-.187	.450-.488	.091-.105	1.788 2.37	.191-.195	.114	750	900
		MGP98T-E6-20	430114040620	.312-1.25						.312		
TRUSS HEAD Aluminum	1/4	MGPT-E8-10	430114020810	.062-.625	.245-.249	.531-.594	.103-.115	1.965 2.56	.250-.259	.125	1200	1620
		MGPT-E8-20	430114020820	.312-1.25						.312		
90° CSK Aluminum	3/16	MGP90-E6-10	430114070610	.062-.625	.183-.187	.323-.359	.092-.102	1.788	.191-.195	*	750	900
	1/4	MGP90-E8-10	430114070810	.062-.625	.245-.249	.433-.478	.119-.128	1.965	.217-.226	*	1200	1620
BROAD TRUSS Aluminum	3/8	MGP30-E12-24	430114031224	.625-1.50	.245-.249	.698-.802	.119-.149	3.375	.380-.385	.680	3000	4000
BUTTON HEAD Steel	3/16	MGPB-R6-10G	4301200906101	.062-.625	.183-.187	.356-.394	.113-.125	1.788 2.73	.191-.195	.114	1725	1400
		MGPB-R6-20G	4301200906201	.312-1.25						.312		
	1/4	MGPB-R8-10G	4301200908101	.062-.625	.245-.249	.475-.525	.136-.152	1.965 2.56	.250-.259	.125	2200	2550
		MGPB-R8-20G	4301200908201	.312-1.25						.312		
5/16	MGPB-R10-12G	4301200910121	.125-.750	.307-.311	.594-.656	.181-.201	2.34 2.84	.274-.283	.250	3000	3910	
	MGPB-R10-22G	4301200910221	.625-1.375						.550			
3/8	MGPB-R12-14G	4301200912141	.125-.875	.369-.375	.713-.787	.223-.248	2.875 3.5	.380-.385	.188	4200	5625	
	MGPB-R12-26G	4301200912261	.812-1.625						.810			
MGP98T HEAD Steel	3/16	MGP98T-R6-10G	4301200406101	.062-.625	.183-.187	.450-.488	.091-.105	1.801 2.383	.191-.195	.087	1725	1400
		MGP98T-R6-20G	4301200406201	.312-1.25					.183-.187	.312		
TRUSS HEAD Steel	1/4	MGPT-R8-10G	4301200208101	.062-.625	.245-.249	.542-.582	.103-.115	1.965 2.56	.250-.259	.114	2200	2550
		MGPT-R8-20G	4301200208201	.312-1.25						.312		
	5/16	MGPT-R10-12G	4301200210121	.125-.750	.307-.311	.703-.797	.127-.141	2.34	.274-.283	.265	3000	3910
3/8	MGPT-R12-14G	4301200212141	.125-.875	.369-.375	.828-.922	.152-.168	2.875	.380-.385	.188	4200	5625	
90° CSK Steel	3/16	MGP90-R6-10G	4301200706101	.062-.625	.183-.187	.323-.359	.092-.102	1.788	.191-.195	*	1725	1400
	1/4	MGP90-R8-10G	4301200708101	.062-.625	.245-.249	.433-.478	.119-.128 .102-.115	1.965 2.56	.217-.226	.204	2200	2550
MGP90-R8-20G	4301200708201	.312-1.255	.275-.280									
BROAD TRUSS Steel	1/4	MGP30-R8-10G	4301200308101	.156-.625	.245-.249	.937	.138-.162	1.965 2.81	.250-.259	.125	2200	2550
		MGP30-R8-24G	4301200308241	.625-1.500						.562		
3/8	MGP30-R12-24G	4301200312241	.625-1.500	.369-.375	1.188-1.25	.188-.212	3.375 3.875	.380-.385	.680	4200	5625	
	MGP30-R12-32G	4301200312321	1.125-2.00						1.18			

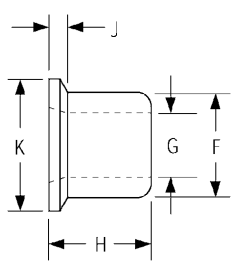
* "d" dimension is not applicable to short grip CSK parts.

HOLE SIZE					
DIA.	MAX HOLE SIZE	DRILL SIZE	DIA.	MAX HOLE SIZE	DRILL SIZE
3/16	.203	13/64	5/16	.328	21/64
1/4	.265	17/64	3/8	.390	25/64

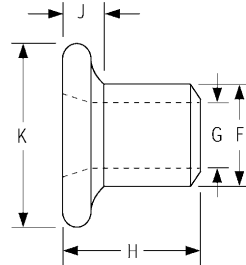


**We Repair
HUCK® Tooling
in House!**

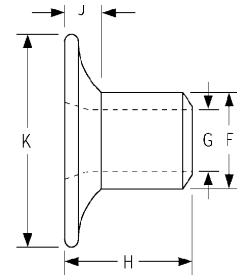
HUCK



Standard Flange MGC



Medium Flange MGCS



Wide Flange MGCW

TYPE OF COLLAR	DIA.	MFG PART #	BYLER PART #	COLLAR DIMENSIONS				
				F	G	H	J	K
MGC STANDARD Aluminum	3/16	MGC-F6	4301912106	.305-.315	.194-.204	.267-.283	.050	.360-.390
	1/4	MGC-F8	4301912108	.395-.405	.250-.260	.367-.383	.062	.485-.515
	5/16	MGC-F10	4301912110	.500-.510	.312-.320	.428-.448	.075	.605-.645
	3/8	MGC-F12	4301912112	.602-.612	.375-.385	.495-.515	.093	.730-.770
MGCW WIDE FLANGE Aluminum	3/16	MGCW-F6	4301912406	.305-.315	.194-.204	.290-.320	.100	.635-.760
MGC STANDARD Steel	3/16	MGC-R6U	43019202061	.305-.315	.187-.197	.267-.283	.050	.360-.390
	1/4	MGC-R8U	43019202081	.395-.405	.250-.260	.367-.383	.062	.485-.515
	5/16	MGC-R10U	43019202101	.500-.510	.312-.320	.428-.448	.075	.605-.645
	3/8	MGC-R12U	43019202121	.602-.612	.375-.385	.495-.515	.093	.730-.770
MGCS MEDIUM FLANGE Steel	3/16	MGCS-R6U	43019203061	.305-.315	.187-.197	.297-.303	.100	.490-.540
MGCW WIDE FLANGE Steel	3/16	MGCW-R6U	43019204061	.305-.315	.187-.197	.290-.320	.100	.635-.760
	1/4	MGCW-R8U	43019204081	.395-.405	.250-.260	.427-.467	.130	.850-1.010
MGC STANDARD Cadmium Plated	3/16	MGC-R6C	4301920262	.305-.315	*	.267-.283	.050	.360-.390
	1/4	MGC-R8C	43019202082	.395-.405	.250-.260	.367-.383	.062	.485-.515
	5/16	MGC-R10C	43019202102	.500-.510	.312-.320	.428-.448	.075	.605-.645
	3/8	MGC-R12C	43019202122	.602-.612	.375-.385	.495-.515	.093	.730-.770

U = Zinc Chromate Gold; F = 6061 Aluminum; C = Cadmium Plated

Installation Tools for MAGNA-GRIP®

3/16" and 1/4" DIA.		
MODEL #2025	MODEL #2480	
PNEUDRAULIC	HYDRAULIC	
DIA.	Nose Assembly	
	2025	2480
3/16"	592991456	592993201
1/4"	592991458	592993204

*Nose Assembly Sold Separately.

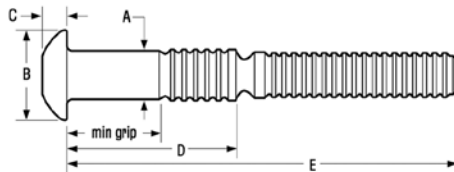
1/4", 5/16" and 3/8" DIA.		
MODEL #256	MODEL #2580	
PNEUDRAULIC	HYDRAULIC	
DIA.	Nose Assembly	
	256	2580
1/4"	592993207	
5/16"	592991439	
3/8"	592991440	

See also the Huck Tool pages 60-62

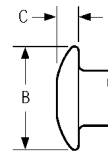
C6L®/C120® "HUCK" BOLTS



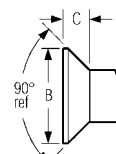
HUCK



Brazier Head - C6LB



Truss Head - C6LT



Flush Head - C6L90

TYPE OF RIVET	DIA.	MFG PART #	BYLER PART #	GRIP RANGE	RIVET DIMENSIONS					MIN. VALUES IN LBS.							
					A	B	C	D	E	SHEAR	TENSILE						
BRAZIER HEAD Aluminum	3/8	C6LB-C12-6	420111011206	.250-.500	.380-.385	.713-.787	.223-.248	0.934	2.250	4200	4200						
		C6LB-C12-8	420111011208	.375-.625				1.059	2.375								
		C6LB-C12-10	420111011210	.500-.750				1.184	2.500								
		C6LB-C12-12	420111011212	.625-.875				1.309	2.625								
BRAZIER HEAD Steel	1/4	C6LB-R8-4G	4201200108041	.188-.313	.254-.259	.475-.525	.136-.152	0.610	1.645	3050	3000						
		C6LB-R8-5G	4201200108051	.250-.375				0.673	1.708								
		C6LB-R8-6G	4201200108061	.313-.438				0.735	1.770								
		C6LB-R8-8G	4201200108081	.438-.563				0.860	1.895								
		C6LB-R8-10G	4201200108101	.563-.688				0.985	2.020								
		C6LB-R8-12G	4201200108121	.688-.813				1.110	2.145								
	5/16	C6LB-R10-6G	4201200110061	.250-.500	.317-.322	.595-.656	.181-.201	0.874	2.035	4725	4600						
		C6LB-R10-8G	4201200110081	.375-.625				1.000	2.156								
	3/8	C6LB-R12-4G	4201200112041	.125-.375	.380-.385	.713-.787	.223-.248	0.809	2.121	6825	6500						
		C6LB-R12-6G	4201200112061	.250-.500				0.934	2.246								
		C6LB-R12-8G	4201200112081	.375-.625				1.059	2.371								
		C6LB-R12-10G	4201200112101	.500-.750				1.184	2.496								
C6LB-R12-12G		4201200112121	.625-.875	1.309				2.621									
BRAZIER HEAD Stainless Steel	3/16	C6LB-U6-4	4201300106040	.188-.313	.191-.195	.356-.394	.078-.088	0.519	1.529	2000	1455						
		C6LB-U6-5	4201300106050	.250-.375				0.582	1.591								
		C6LB-U6-6	4201300106060	.313-.438				0.644	1.654								
	1/4	C6LB-U8-4	4201300108040	.188-.313	.254-.259	.475-.525	.136-.152	0.610	1.645	3550	2750						
		C6LB-U8-6	4201300108060	.313-.438				0.735	1.770								
		C6LB-U8-8	4201300108080	.438-.563				0.860	1.895								
	3/8	C6LB-U12-6	4201300112060	.250-.500	.380-.385	.713-.787	.223-.248	0.934	2.246	7950	6100						
		C6LB-U12-8	4201300112080	.375-.625				1.059	2.371								
		C6LB-U12-10	4201300112100	.500-.750				1.184	2.496								
TRUSS HEAD Stainless Steel	3/8	C6LT-U12-4	4201300212041	.125-.375	.380-.385	.828-.922	.186-.202	0.809	2.121	7950	6100						
		C6LT-U12-6	4201300212061	.250-.500				0.934	2.246								
		C6LT-U12-8	4201300212081	.375-.625				1.059	2.371								
		C6LT-U12-10	4201300212101	.500-.750				1.184	2.496								
		C6LT-U12-12	4201300212121	.625-.875				1.184	2.496								
C98LT HEAD Stainless Steel Bright Polished	3/16	C98LT-U6-3BR	420130180603	.125-.250	.191-.195	.406-.469	.078-.088	0.457	1.466	2000	1455						
		C98LT-U6-5BR	420130180605	.250-.375				0.582	1.529								
		C98LT-U6-7BR	420130180607	.375-.500				0.707	1.716								
		C98LT-U6-9BR	420130180609	.500-.625				0.832	1.841								
		C98LT-U6-11BR	420130180611	.625-.750				0.957	1.966								
		C98LT-U6-12BR	420130180612	.688-.813				1.019	2.029								
TRUSS HEAD Stainless Steel Cap Steel Body	1/4	C6LTC-R8-6	4201200308063	.313-.438	.254-.259	.610 max	.165 max	0.735	1.770	3050	3000						
		C6LTC-R8-8	4201200308083	.438-.563				0.860	1.895								
		C6LTC-R8-10	4201200308103	.563-.688				0.985	2.020								
		C6LTC-R8-12	4201200308123	.688-.813				1.110	2.145								
	3/8	C6LTC-R12-6	4201200312063	.250-.500	.380-.385	.828-.922	.152-.168	0.934	2.246	6825	6500						
		C6LTC-R12-8	4201200312083	.375-.625				1.059	2.371								
		C6LTC-R12-10	4201200312103	.500-.750				1.184	2.496								
		C6LTC-R12-12	4201200312123	.625-.875				1.309	2.621								
		C6LTC-R12-14	4201200312143	.750-1.00				1.434	2.746								

Contact Byler Rivet for C6L & C6L90 fasteners not published.

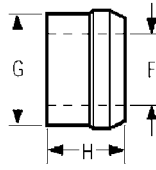
C120 - Grade 5
Pins & Collars available

Minimums may apply.

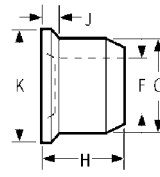
DIA.	MAX HOLE	DRILL SIZE
3/16	.219	13/64 = 16687010
1/4	.281	17/64 = 16687050
5/16	.359	11/32 = 16687100
3/8	.422	25/64 = 16687130



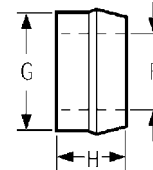
WE REPAIR
"HUCK"
TOOLS!



LC/2LC



3LC



8LC

TYPE OF COLLAR	DIA.	MFG PART #	BYLER PART #	COLLAR DIMENSIONS		
				F	G	H
2LC STANDARD Aluminum	3/16	2LC-F6	42019133206	.187-.196	.311-.304	.218-.248
	1/4	2LC-F8	42019133208	.256-.265	.409-.402	.290-.320
	5/16	2LC-F10	42019133210	.304-.310	.485-.494	.350-.380
	3/8	2LC-F12	42019133212	.375-.385	.590-.600	.430-.460
2LC STANDARD Steel	3/16	2LC-R6G	42019202061	.187-.196	.311-.304	.218-.248
	1/4	2LC-R8G	42019202081	.256-.265	.409-.402	.290-.320
	5/16	2LC-R10G	42019202101	.304-.310	.485-.494	.350-.380
	3/8	2LC-R12G	42019202121	.375-.385	.590-.600	.430-.460
2LC STANDARD Stainless Steel	3/16	2LC-2CU6	42019302062	.187-.196	.311-.304	.218-.248
	1/4	2LC-2CU8	42019302082	.256-.265	.409-.402	.290-.320
	5/16	2LC-2CU10	42019302102	.304-.310	.485-.494	.350-.380
	3/8	2LC-2CU12	42019302122	.375-.385	.590-.600	.430-.460

TYPE OF COLLAR	DIA.	MFG PART #	BYLER PART #	COLLAR DIMENSIONS				
				F	G	H	J	K
3LC FLANGE Aluminum	1/4	3LC-F8	42019133308	.256-.267	.409-.402	.349-.379	.047-.078	.484-.516
	5/16	3LC-F10	42019133310	.304-.312	.498-.507	.394-.426	.062-.094	.609-.641
	3/8	3LC-F12	42019133312	.378-.390	.599-.610	.502-.532	.062-.125	.719-.781
3LC FLANGE Steel	3/16	3LC-2R6G	42019203061	.187-.196	.304-.311	.250-.280	.031-.062	.359-.391
	1/4	3LC-2R8G	42019203081	.256-.267	.409-.402	.349-.379	.047-.078	.484-.516
	5/16	3LC-2R10G	42019203101	.304-.312	.498-.507	.394-.426	.062-.094	.609-.641
	3/8	3LC-2R12G	42019203121	.378-.390	.599-.610	.502-.532	.062-.125	.719-.781
3LC FLANGE Stainless Steel	3/16	3LC-2CU6	42019303062	.187-.196	.304-.311	.250-.280	.031-.062	.359-.391
	1/4	3LC-2CU8	42019303082	.256-.267	.409-.402	.349-.379	.047-.078	.484-.516
	5/16	3LC-2CU10	42019303102	.304-.312	.498-.507	.394-.426	.062-.094	.609-.641
	3/8	3LC-2CU12	42019303122	.378-.390	.599-.610	.502-.532	.062-.125	.719-.781



• When using 3LC collars, add "J" dimensions to thickness of material being fastened to determine grip number.

***Wide Flange 3/16" and 1/4" collars available in steel and stainless steel. Minimums may apply**

Installation Tools for C6L®/C120®

3/16" and 1/4" DIA.	
MODEL #2025	MODEL #2480
DIA.	Nose Assembly
3/16"	592993003
1/4"	592993006

5/16" and 3/8" DIA.	
MODEL #256	MODEL #2580
DIA.	Nose Assembly
5/16"	5929999245
3/8"	59299100245



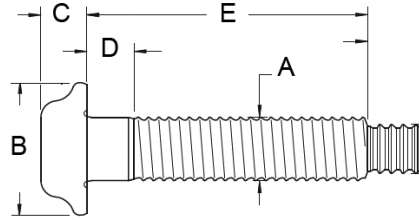
Model 940 Hydraulic POWERIG®

- Portable production and repair
 - .3 gpm
 - Electrically powered; 115 or
 - 220 volts, single phase
 - Weighs 75 lbs
 - 12.5"L x 10.5"W x 18"H
- Part # **591940**

* 256 Tool will pull 3/16" and 1/4" C6L/C120's, but requires reducing adapter #593102463.

* Nose Assembly sold separately.

HUCK



The **BOBTAIL® Huckbolt** combined with its rugged installation tools offers a complete system that delivers superior value and performance.

Proven Performance

- **High, consistent clamp load**
- **Vibration proof**
- **High fatigue endurance, high shear and tensile loads**

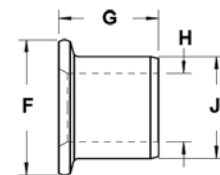
GRADE 8 - Metric

TYPE	MFG PART #	BYLER PART #	GRIP RANGE* (MIN - MAX)	A MAX	B	C	D MAX	E MAX	MAX HOLE	MIN VALUES IN LBS.		
										SHEAR	CLAMP	TENSILE
FLANGED HEAD 12mm	MBT-DT12-10	461023011210	5-15mm				3.8	34.2				
	MBT-DT12-15	461023011215	10-20mm				3.8	39.2				
	MBT-DT12-20	461023011220	15-25mm				3.8	44.2				
	MBT-DT12-25	461023011225	20-3mm	12.0	24.1-25.4	8.9-9.6	3.8	49.2	13.5mm	14,700	14,600	19,700
	MBT-DT12-30	461023011230	25-35mm				3.8	54.2				
	MBT-DT12-35	461023011235	30-40mm				3.8	59.2				
	MBT-DT12-40	461023011240	35-45mm				3.8	64.2				
FLANGED HEAD 14mm	MBT-DT14-10	461023011410	5-15mm				3.8	37.1				
	MBT-DT14-15	461023011415	10-20mm				3.8	42.1				
	MBT-DT14-20	461023011420	15-25mm				3.8	47.1				
	MBT-DT14-25	461023011425	20-30mm	14.0	30.0 MAX	11.5 MAX	3.8	52.1	15.5mm	21,100	19,500	27,000
	MBT-DT14-30	461023011430	25-35mm				3.8	57.1				
	MBT-DT14-35	461023011435	30-40mm				3.8	62.1				
	MBT-DT14-40	461023011440	35-45mm				3.8	67.1				
FLANGED HEAD 16mm	MBT-DT16-10	461023011610	5-15mm				3.8	40.1				
	MBT-DT16-15	461023011615	10-20mm				3.8	45.1				
	MBT-DT16-20	461023011620	15-25mm				3.8	50.1				
	MBT-DT16-25	461023011625	20-30mm	16.0	32.3-33.8	11.4-12.2	3.8	55.1	17.5mm	26,000	26,000	36,600
	MBT-DT16-30	461023011630	25-35mm				3.8	60.1				
	MBT-DT16-35	461023011635	30-40mm				3.8	65.1				
	MBT-DT16-40	461023011640	35-45mm				3.8	70.1				
FLANGED HEAD 20mm	MBT-DT20-10	461023012010	5-15mm				3.8	45.9				
	MBT-DT20-15	461023012015	10-20mm				3.8	50.9				
	MBT-DT20-20	461023012020	15-25mm				3.8	55.1				
	MBT-DT20-25	461023012025	20-30mm	20.0	40.3-42.4	15.0-16.0	3.8	60.9	22mm	41,000	40,700	57,300
	MBT-DT20-30	461023012030	25-35mm				3.8	65.9				
	MBT-DT20-35	461023012035	30-40mm				3.8	70.9				
	MBT-DT20-40	461023012040	35-45mm				3.8	75.9				

*Grip ranges in mm. Other sizes available.

Collar

COLLAR STYLE	DIA.	MFG PART #	BYLER PART #	COLLAR DIMENSIONS			
				F	G	H	J
STEEL	12mm	MBTC-R16BL	46119032161	24.1-25.4	17.3-17.7	18.3-18.5	12.1-12.3
	14mm	MBTC-R20BL	46119032201	28.2-29.6	20.5-21.0	21.1-21.5	14.0-14.4
	16mm	MBTC-R24BL	46119032241	32.3-33.8	23.1-23.7	24.1-24.5	16.0-16.4
	20mm	MBTC-R28BL	46119032281	40.3-42.1	29.0-29.6	30.2-30.6	20.1-20.5

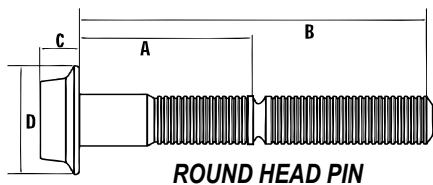


Tooling

TOOL	12mm		14mm		16mm		20mm	
	NOSE	CUTTER	NOSE	CUTTER	NOSE	CUTTER	NOSE	CUTTER
2628	-	-	-	-	99-7831	99-7831CC	99-7822	99-782CC
BTT35LS	99-7820	99-7820CC	99-7824	99-7824CC	99-7821	99-7821CC	-	-
SFBTT20	99-7880	99-7880CC	99-7884	99-7884CC	99-7881	99-7881CC	-	-
BTT57	-	-	-	-	-	-	99-7852	99-7852CC



BTT35LS

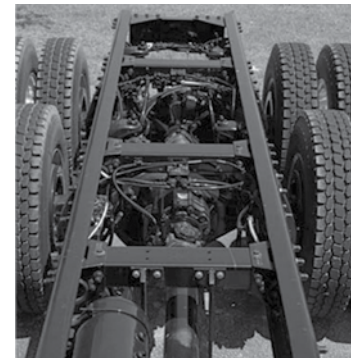


Grade 8 Fastener

The HP8®, provides an easy-to-use system that delivers a permanent, vibration resistant clamp. These fasteners, available in diameters ranging from 1/2" to 3/4", offer fast, tamper-resistant installation, with only a visual inspection required.

Fastener Dimensions

TYPE	MFG PART #	BYLER PART #	RIVET DIMENSIONS				GRIP DATA 1/2", 5/8", 3/4"	
			A	B	C	D	GRIP NO.	GRIP RANGE
1/2" ROUND HEAD (DT16)	HP8F-DT16-8	440140101608	1.625	3.550	.307	1.070	8	.250-.750
	HP8F-DT16-12	440140101612	1.875	3.800				
	HP8F-DT16-16	440140101616	2.125	4.050				
	HP8F-DT16-20	440140101620	2.375	4.300				
	***	***	***	***				
5/8" ROUND HEAD (DT20)	HP8F-DT20-4	440140102004	-	-	.498	1.330	12	.500-1.000
	HP8F-DT20-6	440140102006	-	-				
	HP8F-DT20-8	440140102008	1.820	4.038				
	HP8F-DT20-12	440140102012	2.070	4.288				
	HP8F-DT20-16	440140102016	2.320	4.538				
	HP8F-DT20-20	440140102020	2.570	4.788				
	HP8F-DT20-28	440140102028	3.070	5.288				
	HP8F-DT20-36	440140102036	3.570	5.788				
	HP8F-DT20-44	440140102044	4.070	6.288				
	***	***	***	***				
3/4" ROUND HEAD (DT24)	HP8F-DT24-8	440140102408	2.000	4.640	.600	1.590	16	.750-1.250
	HP8F-DT24-12	440140102412	2.250	4.890				
	HP8F-DT24-16	440140102416	2.500	5.140				
	HP8F-DT24-20	440140102420	2.750	5.390				
	HP8F-DT24-28	440140102428	3.250	5.890				
	HP8F-DT24-36	440140102436	3.750	6.390				
***	***	***	***					

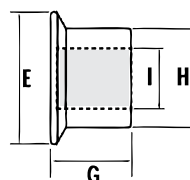


Benefits:

- Heavy duty two piece fastener with a wide grip range
- High resistance to vibratory loosening
- Visual inspection to confirm joint integrity
- Meets strength performance of grade 8

*Longer lengths available. Minimums may apply.

DIA.	MFG PART #	BYLER PART #	COLLAR DIMENSIONS			
			E	G	H	I
1/2"	HPCF-R16U	440192010161	1.085	.750	.812	.519
5/8"	HPCF-R20U	440192010201	1.358	.922	1.009	.645
3/4"	HPCF-R24U	440192010241	1.600	1.107	1.213	.780



Collars

HP8 Tooling

1/2" DIA.	5/8" DIA.	5/8" & 3/4" DIA.
MODEL # 2620 / 2620PT	MODEL # 2624	MODEL # 2628
PT = Pass Thru		
NOSE ASSEMBLY	NOSE ASSEMBLY	NOSE ASSEMBLY
592995307 592995300 = Pass Thru	592995301	5/8" = 592995301 3/4" = 592995303

MODEL 940 Hydraulic POWERIG®

- Portable production and repair
- .3 GPM
- Electrically powered; 115 or 220 volts, single phase
- Weighs 75 lbs
- 12.5"L x 10.5"W x 18"H



Part # 591940

MODEL 918 Hydraulic POWERIG®

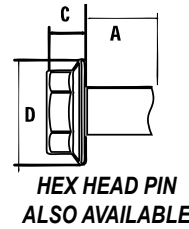
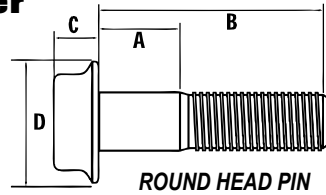
- High-production applications
- Operates up to 2 tools; 2 gpm flow rate
- Electricity powered; 220, 440, or 550 volts, 3 phase
- Weighs 708 lbs, operational 44"L x 25"W x 30"H



Part # 591918

HUCK

Grade 8/10.9 Fastener



To install the Huck-Spin® Fastener, you need the following:

1. PowerRig® 940/PowerRig 918®
2. 2624 HS Tool
3. Pulling Head
4. Gauge # 127444

Optional:

1. Collar Cutter for removal of Huck-Spin® only

Dimensions - Inches

SIZE	MFG PART #	BYLER PART #	DIMENSIONS	
			B	C
1/2" ROUND HEAD (DT16) D = 1.07	HSP8-DT16-08	460140101608	1.965	.397
	HSP8-DT16-10	460140101610	2.090	
	HSP8-DT16-12	460140101612	2.215	
	HSP8-DT16-16	460140101616	2.465	
	HSP8-DT16-20	460140101620	2.715	
5/8" ROUND HEAD (DT20) D = 1.33	HSP8-DT20-04	460140102004	2.005	.498
	HSP8-DT20-06	460140102006	2.130	
	HSP8-DT20-08	460140102008	2.255	
	HSP8-DT20-10	460140102010	2.380	
	HSP8-DT20-12	460140102012	2.505	
	HSP8-DT20-16	460140102016	2.755	
	HSP8-DT20-20	460140102020	3.005	
	HSP8-DT20-24	460140102024	3.255	
	HSP8-DT20-28	460140102028	3.505	
	HSP8-DT20-32	460140102032	3.755	
	HSP8-DT20-36	460140102036	4.005	
HSP8-DT20-44	460140102044	-		
3/4" ROUND HEAD (DT24) D = 1.59	HSP8-DT24-08	460140102408	2.540	.600
	HSP8-DT24-12	460140102412	2.790	
	HSP8-DT24-16	460140102416	3.040	
	HSP8-DT24-20	460140102420	3.290	
	HSP8-DT24-24	460140102424	3.540	
	HSP8-DT24-28	460140102428	3.790	
	HSP8-DT24-32	460140102432	4.040	
	HSP8-DT24-36	460140102436	4.290	

Dimensions - Metric

SIZE	MFG PART #	BYLER PART #	DIMENSIONS	
			B	C
14mm ROUND HEAD (DT14) D = 30.00	MHSPF-DT14-10	46015011410	54.42	11.50
	MHSPF-DT14-15	46015011415	59.42	
	MHSPF-DT14-20	46015011420	64.42	
	MHSPF-DT14-25	46015011425	69.42	
	MHSPF-DT14-30	46015011430	74.42	
	MHSPF-DT14-35	46015011435	79.42	
	MHSPF-DT14-40	46015011440	84.42	
	MHSPF-DT14-55	46015011455	99.42	
MHSPF-DT14-60	46015011460	104.42		
16mm ROUND HEAD (DT16) D = 24.10	MHSPF-DT16-15	46015011615	59.41	12.80
	MHSPF-DT16-17	46015011617	-	
	MHSPF-DT16-25	46015011625	69.41	
	MHSPF-DT16-30	46015011630	74.41	
	MHSPF-DT16-35	46015011635	79.41	
	MHSPF-DT16-40	46015011640	84.41	
20MM ROUND HEAD (DT20) D = 30.10	MHSPF-DT20-15	46015012015	68.24	16.10
	MHSPF-DT20-20	46015012020	73.24	
	MHSPF-DT20-25	46015012025	78.24	
	MHSPF-DT20-30	46015012030	83.24	
	MHSPF-DT20-35	46015012035	88.24	
	MHSPF-DT20-40	46015012040	93.24	
	MHSPF-DT20-45	46015012045	98.23	

Benefits:

A threaded pin, threaded collar, and no pintail

- Threaded pin which allows removal using collar cutting tool
- Without pintails, noise and waste are reduced

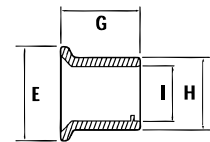
Grip Data

INCHES		METRIC	
NO.	RANGE	NO.	RANGE
4	.125-.500	10	4-6
6	.125-.625	15	9-21
8	.250-.750	20	14-26
10	.375-.875	25	19-31
12	.500-1.00	30	24-36
16	.750-1.25	35	29-41
20	1.00-1.50	40	34-46
24	1.25-1.75	45	39-51
28	1.50-2.00	50	44-56
32	1.75-2.25	55	49-61
36	2.00-2.50	60	54-66


Collars

TYPE	DIA.	MFG PART #	BYLER PART #	COLLAR DIMENSIONS			
				E	G	H	I
STANDARD	1/2"	HSCF-R16U*	460192010161	.750	.750	.812	.519
	5/8"	HSCF-R20U*	460192010201	.940	.972	1.009	.645
	3/4"	HSCF-R24U*	460192010241	1.120	1.107	1.213	.780
METRIC	14mm	MHSCF-R14U*	460193010142	31.00	21.80	23.30	14.60
	16mm	MHSCF-R16U*	460193010162	34.80	23.40	25.60	16.46
	20mm	MHSCF-R20U*	460193010202	43.05	28.80	32.10	20.45

*U = ZINC GOLD DICHROMATE Also available in BLACK PAINTABLE LUBE (R)



Huck-Spin® Tooling

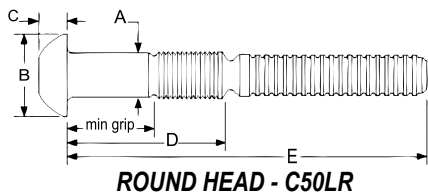
MODEL # 2624HS	DIA.	NOSE ASSEMBLY	COLLAR CUTTER
	1/2"	592997500	5929975001cc
	5/8"	592997501	5929975011cc
	3/4"	592997503	5929975031cc
	14mm	592997415	5929974151cc
	16mm	592997501	5929975011cc
	20mm	592997418	5929974181cc

MODEL 940 Hydraulic POWERRIG®

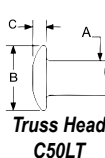


Part # 591940

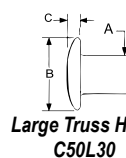
PRESSURE SETTINGS					
TYPE	DIA.	PULL / SWAGE	PULL / CUT	RETURN / SWAGE	RETURN / CUT
Standard	1/2"	3900	3200	3000	2500
	5/8"	5750	5000	4500	4000
	3/4"	7200	6600	6200	5600
Metric	14mm	4600	4000	3600	3000
	16mm	5750	5000	4500	4000
	20mm	8200	7600	7200	6600



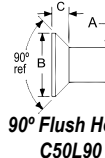
ROUND HEAD - C50LR



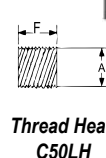
Truss Head C50LT



Large Truss Head C50L30



90° Flush Head C50L90



Thread Head C50LH

Other Headstyles Available:

Grip Data and Dimensions

TYPE	MFG PART #	BYLER PART #	GRIP RANGE (MIN - MAX)	B	D	E	MIN VALUES IN LBS.		
							SHEAR	CLAMP	TENSILE
ROUND HEAD STEEL 1/2"	C50LR-BR16-4	4203200816041	.250-.500	.922	1.213	3.172	14400	12050	17050
	C50LR-BR16-8	4203200816081	.500-.750		1.463	3.422			
	C50LR-BR16-12	4203200816121	.750-1.00		1.713	3.672			
	C50LR-BR16-16	4203200816161	1.00-1.25		1.963	3.922			
	C50LR-BR16-20	4203200816201	1.25-1.50		2.213	4.172			
	C50LR-BR16-24	4203200816241	1.50-1.75		2.463	4.422			
	C50LR-BR16-28	4203200816281	1.75-2.00		2.713	4.672			
	C50LR-BR16-32	4203200816321	2.00-2.25		2.963	4.922			
	C50LR-BR16-36	4203200716361	2.25-2.50		3.213	5.172			
ROUND HEAD STEEL 5/8"	C50LR-BR20-4	4203200820041	.250-.500	1.141	1.433	3.656	22500	19200	27100
	C50LR-BR20-8	4203200820081	.500-.750		1.683	3.906			
	C50LR-BR20-12	4203200820121	.750-1.00		1.933	4.156			
	C50LR-BR20-16	4203200820161	1.00-1.25		2.183	4.406			
	C50LR-BR20-20	4203200820201	1.25-1.50		2.433	4.656			
	C50LR-BR20-24	4203200820241	1.50-1.75		2.683	4.906			
	C50LR-BR20-28	4203200820281	1.75-2.00		2.933	5.156			
ROUND HEAD STEEL 3/4"	C50LR-BR24-8	4203200824081	.500-.750	1.375	1.768	4.406	32400	28400	40100
	C50LR-BR24-12	4203200824121	.750-1.00		2.018	4.656			
	C50LR-BR24-16	4203200824161	1.00-1.25		2.268	4.906			
	C50LR-BR24-20	4203200824201	1.25-1.50		2.518	5.156			
	C50LR-BR24-24	4203200824241	1.50-1.75		2.768	5.406			
	C50LR-BR24-28	4203200824281	1.75-2.00		3.018	5.656			
	C50LR-BR24-32	4203200824321	2.00-2.25		3.268	5.906			
	C50LR-BR24-36	4203200824361	2.25-2.50		3.518	6.156			
	C50LR-BR24-40	4203200824401	2.50-2.75		3.768	6.406			
	C50LR-BR24-44	4203200824441	2.75-3.00		4.018	6.656			
	ROUND HEAD STEEL 7/8"	C50LR-BR28-16	4203200828161		1.00-1.25	1.594			
C50LR-BR28-20		4203200828201	1.25-1.50	2.671	5.438				
C50LR-BR28-24		4203200828241	1.50-1.75	2.921	5.688				
C50LR-BR28-28		4203200828281	1.75-2.00	3.171	5.938				
C50LR-BR28-32		4203200828321	2.00-2.25	3.421	6.188				
C50LR-BR28-36		4203200828361	2.25-2.50	3.671	6.438				
C50LR-BR28-40		4203200828401	2.50-2.75	3.921	6.688				
LARGE TRUSS HEAD STEEL 5/8"	C50L30-BR20-4GA	4203200320041	.250-.500	1.375	1.433	3.656	22500	19200	27100
	C50L30-BR20-8GA	4203200320081	.500-.750		1.683	3.906			
	C50L30-BR20-12GA	4203200320121	.750-1.00		1.933	4.156			
	C50L30-BR20-16GA	4203200320161	1.00-1.25		2.183	4.406			
	C50L30-BR20-20GA	4203200320201	1.25-1.50		2.433	4.656			

*Truss head, 90° countersunk and stainless steel also available

*Factory minimums may apply

C50 Tooling



MODEL # 2620



MODEL # 2628

NOSE ASSEMBLIES			
DIA.	MODEL 2620	MODEL 2624	MODEL 2628
1/2"	592995000	592995021	592995021
5/8"	-	592995008	592995008
3/4"	-	-	592995010

MODEL 940 Hydraulic POWERIG®

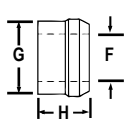


Part # 591940

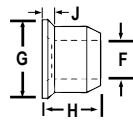
Tool Specifications:

- Portable production and repair
- 70 GPM
- Electrically powered; 115 or 220 volts, single phase
- Weighs 75 lbs, operational
- 12.5" L x 10.5" W x 18" H

Collars



Standard Steel LC



Flanged Steel 3LC

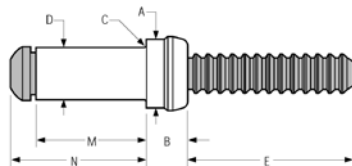
COLLAR STYLE	DIA.	MFG PART #	BYLER PART #	COLLAR DIMENSIONS			
				F	G	H	J
STANDARD STEEL LC	1/2	LC-2R16G	42039201161	.515-.540	.765-.800	.610-.645	N/A
	5/8	LC-2R20G	42039201201	.650-.665	.970-1.010	.845-.875	
	3/4	LC-2R24G	42039201241	.775-.790	1.160-1.185	.930-.960	
	7/8	LC-2R28G	42039201281	.910-.935	1.345-1.375	1.083-1.113	
FLANGED STEEL 3LC	1/2	3LC-2R16G	42039203161	.515-.535	.793-.807	.716-.746	.094-.156
	5/8	3LC-2R20G	42039203201	.650-.665	.970-1.010	.929-.959	.125-.187
	3/4	3LC-2R24G	42039203241	.775-.790	1.200-1.710	1.117-1.147	.156-.218
	7/8	3LC-2R28G	43039203281	.910-.930	1.360-1.375	1.300-1.330	.187-.250

*When using 3LC collars, include J dimension in grip dimension to determine grip number.



TAB-LOK™

The Tab-Lok feature makes sure the collar stays on the pin, before installation, in overhead and down slanted pin placements. To order Tab-Lok collars, add an "L" to the end of the manufacturer's part number.



Benefits:

- Structural high strength blind steel fastener
- Excellent pull-together properties, high clamping force

DIA.	MFG PART #	BYLER PART #	GRIP RANGE	HOLE SIZE	RIVET DIMENSIONS												
					A	B	C	D	E	M ref							
3/16	BOM-R6-3	41022006031	.157-.219	7/32 NOM	.276-.286	.152-.168	.015	.196-.206	.785	.439							
	BOM-R6-4	41022006041	.220-.281	.208-.222						.501							
1/4	BOM-R8-3	41022008031	.157-.219	.277-.292	.368-.380	.205-.225	.020	.262-.275	.860	.523							
	BOM-R8-4	41022008041	.220-.281							.585							
	BOM-R8-5	41022008051	.282-.344							.648							
	BOM-R8-6	41022008061	.345-.406							.710							
	BOM-R8-7	41022008071	.407-.469							.773							
	BOM-R8-8	41022008081	.470-.531							.835							
	BOM-R8-9	41022008091	.532-.594							.898							
	BOM-R8-10	41022008101	.595-.656							.960							
	BOM-R8-11	41022008111	.657-.719							1.023							
	BOM-R8-12	41022008121	.720-.781							1.085							
	5/16	BOM-R10-4	41022010041							.188-.312	.348-.368	.468-.478	.266-.278	.025	.332-.346	1.285	.695
		BOM-R10-6	41022010061							.313-.437							.820
BOM-R10-8		41022010081	.438-.562	.945													
BOM-R10-10		41022010101	.563-.687	1.070													
BOM-R10-12		41022010121	.688-.812	1.195													
BOM-R10-14		41022010141	.813-.937	1.320													
BOM-R10-16		41022010161	.938-1.062	1.445													
3/8	BOM-R12-4	41022012041	.188-.312	.413-.435	.553-.563	.315-.327	.030	.393-.411	1.230	.766							
	BOM-R12-6	41022012061	.313-.437							.891							
	BOM-R12-8	41022012081	.438-.562							1.016							
	BOM-R12-10	41022012101	.563-.687							1.141							
	BOM-R12-12	41022012121	.688-.812							1.266							
	BOM-R12-14	41022012141	.813-.937							1.391							
	BOM-R12-16	41022012161	.938-1.062							1.516							
	BOM-R12-18	41022012181	1.063-1.187							1.641							
	BOM-R12-20	41022012201	1.188-1.312							1.766							
	1/2	BOM-R16-4	41022016041							.251-.375	9/16 NOM .546-.581	.745-.755	.415-.438	.035	.529-.544	1.530	1.000
BOM-R16-6		41022016061	.376-.500	1.125													
BOM-R16-8		41022016081	.501-.625	1.250													
BOM-R16-10		41022016101	.626-.750	1.375													
BOM-R16-12		41022016121	.751-.875	1.500													
5/8	BOM-R20-4GA	41022020041	.251-.500	11/16 NOM .687-.728	.931-.941	.507-.545	.040	.669-.685	1.710	1.213							
	BOM-R20-8GA	41022020081	.501-.750							1.463							
	BOM-R20-12GA	41022020121	.751-1.000							1.713							
	BOM-R20-16GA	41022020161	1.001-1.250							1.963							
BOM-R20-20GA	41022020201	1.251-1.500	2.213														
3/4	BOM-R24-4	41022024041	.251-.500	13/16 NOM .828-.873	1.120-1.130	.637-.654	.050	.795-.816	2.150	1.380							
	BOM-R24-8	41022024081	.501-.750							1.630							
	BOM-R24-12	41022024121	.751-1.000							1.880							
	BOM-R24-16	41022024161	1.001-1.250							2.130							

High-strength industrial blind bolt. Meets ASTM A307 strength requirements. Use in situations where a two-piece fastener would commonly be used. BOM® fastener install from just one side by a single worker--saving time and reducing cost.

MIN VALUES IN LBS.		
DIA.	SHEAR	TENSILE
3/16	2800	1800
1/4	5100	3250
5/16	8050	5200
3/8	11100	7250
1/2	20150	13000
5/8	28500	20500
3/4	45100	29100

*All steel

BOM® Tooling



DIA.	NOSE ASSEMBLY - PNEUMATIC			NOSE ASSEMBLY - HYDRAULIC		
	245	246 / 256	2025	2480	2580	2600
3/16	-	-	59299994	59299994	-	-
1/4	592998301	592998301	-	-	592998301	-
5/16	-	59299769	-	-	59299769	592993119
3/8	-	592991272*	-	-	-	592993122



*Use only in very low volume repair applications

Contact Byler Rivet for more information about tooling regarding larger sizes. Minimums may apply.

HUCK

Model 2025



PNEUDRAULIC TOOL

The Model 2025 is a high performance, ergonomic tool designed for use with blind rivets & small diameter two-piece Huck bolts. Made for both high speed production (**up to 35 fasteners/minute**) & repair applications. Lightweight, reliable & easy to use, these tools deliver a level of performance never before possible in a low cost pneudraulic tool.

Byler Part #:5912025

Fill Bottle
Part #:593120337



TOOL SPECIFICATIONS

- Sets:** 3/16" Bom, -12 Hucktainer; 3/16" & 1/4" Magna-Lok, Magna-Bulb, Auto-Bulb, Magna-Grip & C6L / 120L
- Weight:** 5.75 lbs.
- Req. Air Pressure:** 90-100psi
- Features:** in-line piston for one-stroke installation & a pintail deflector
- Fluid:** Automatic Transmission Fluid DEXTRON III® or equivalent
- Working Stroke:** .675"
- Capacity:** 5290 lbs @ 90 psi
- Options:** Extended Piston version (2025L) Optional Vacuum Collection System (2025V)

Model 2480



HYDRAULIC TOOL

The Model 2480 is a very lightweight tool which provides for high-speed installation of a wide range of HuckBolts and Huck blind fasteners. **Sets up to 32 fasteners per minute.** The tool has only one moving part, resulting in outstanding reliability and minimal maintenance. Great for use in limited clearance areas.

Byler Part #:5912480

TOOL SPECIFICATIONS

- Sets:** 3/16" Bom, -12 Hucktainer; 3/16" & 1/4" Magna-Lok, Magna-Bulb, Auto-Bulb, Magna-Grip & C6L / 120L
- Weight:** 2.2 lbs.
- Pull Pressure:** 8400 psi
- Return Pressure:** 3200 psi
- Stroke:** .85"
- Pull Capacity:** 5700 lbs

Nose Assemblies for 2025 & 2480

FASTENERS	DIA.	STANDARD 3"	LONG 6"
BOM®	3/16"	59299994	N/A
Magna-Lok® Magna-Bulb®	3/16"	592993300	
		592993303*	
	1/4"	592993301	592993306*
		592993305*	
	3/16" & 1/4"	592993487	N/A
Hucktainer®	3/8"	592993464	
Magna-Grip®	3/16"	592991456	592991457
		592993201	592993202
	1/4"	592991458	592991459
		592993204	592993205
C6L®	3/16"	592993003	N/A
	1/4"	592993006	

*Replaceable Anvil Insert

Hydraulic Hose Assemblies



PART #	LENGTH
59311830912	12 ft
59311830926	26 ft
59311830938	38 ft
59311830952	52 ft

Complete Huck Cab Kit



Part # 650002

Includes:

- 2025 tool
- Four Nose Assemblies
- Magna-Loks®
- Huck Bolts® & Collars®
- Stainless Huck Bolts®
- "Paccar" Huck Bolts®
- Variety of Steel Inserts
- 2 Expandable Insert Tools

Hydraulic POWERIGS® for Model 2480



Part # 591940

940 RIG

- Operates:** 1 tool only
- Flow Rate:** .3 GPM
- Power:** Electric: 115 or 220 volts, single phase
- Weight:** 75 lbs, operational; 66 lbs without fluid
- Length:** 12.5" L x 10.5" W x 18" H



Part # 591918

918 & 918(-5) RIGS

- Operates:** 2 tools
- Flow Rate:** 2 GPM
- Power:** Electric: 220, 440 or 550 volts, 3 phase
- Weight:** 708 lbs, operational; 585 lbs without fluid
- Length:** 44" L x 25" W x 30" H
- Also Available:** **918(-5) RIG** operates up to 3 tools **Part # 5919185**



Ask your Byler Sales Representative about Huck Tooling Rentals!

HUCK

Model 256



PNEUDRAULIC TOOL

The Model 256 tool is designed for high-speed production applications, able to **install up to 20 fasteners per minute**. It features a concentric (inline) pull piston and new front gland design, allowing for easy piston removal & increased seal life, which adds to its durability.

Byler Part #:591256

Fill Bottle
#:693120337

Stall Nut
#:120824



Fill Tool
#:1124665

TOOL SPECIFICATION

- Sets:** 3/16", 1/4", 5/16" & 3/8" Huck bolts & fasteners in all alloys
- Weight:** 11.1 lbs without nose assembly
- Req. Air Pressure:** 90-100 psi
- Stroke:** 1.026"
- Pull Capacity:** 9986 lbs
- Fluid:** Automatic Transmission Fluid DEXTRON III® or equivalent

Sets 5/16 & 3/8 Huck Fasteners!

Model 2580



HYDRAULIC TOOL

The Model 2580 is a lightweight tool designed for use in a wide range of high-speed production applications. With only one moving part, the tool provides for increased reliability and requires minimal maintenance. An offset piston design allows the Model 2580 to easily fit in limited clearance applications.

Byler Part #:5912580

TOOL SPECIFICATION

- Sets:** 3/16", 1/4", 5/16" & 3/8" Huck bolts & fasteners in all alloys
- Weight:** 6.8 lbs without nose assembly
- Stroke:** .940"
- Pull Pressure:** 7400 psi
- Pull Capacity:** 8240 lbs
- Fluid:** Automatic Transmission Fluid DEXTRON III® or equivalent

Nose Assemblies for Model 256 & 2580

FASTENERS	DIA.	STANDARD 3"
BOM®	1/4"	99-830-1
	3/8"	99-1272
	5/16"	99-769
Magna-Lok®	3/8"	99-3318
C6L®	1/4"	99-2564
	5/16"	99-99-245
	3/8"	99-100-245
Magna-Grip®	1/4"	99-1290
		99-3207
	5/16"	99-1439
	3/8"	99-1440

Hydraulic Hose Assemblies



PART #	LENGTH
59311830912	12 ft
59311830926	26 ft
59311830938	38 ft
59311830952	52 ft



Protect Your Investment!



In-line Air Regulators are highly recommended for **ALL AIR & PNEUDRAULIC TOOLS**. They maintain continuous air pressure at the tool. **Part #: 6001100**

Hydraulic POWERIGS® for Model 2580



Part # 591940

940 RIG

The Model 940 POWERIG® is a portable unit sized for moderate production and repair applications. Choice of 115 or 220 Volt AC power, single phase. Has adjustable hydraulic outputs and quick-connect couplers for connecting installation tool hoses.

- Operates:** 1 tool only
- Flow Rate:** .3 GPM
- Power:** Electric: 115 or 220 volts, single phase
- Weight:** 75 lbs, operational; 66 lbs without fluid
- Length:** 12.5" L x 10.5" W x 18" H

918 RIG



Part # 591918

The Model 918 POWERIG® is the largest hydraulic unit offered by HUCK. Sized for high production applications the unit can operate up to two tools independently. A 22-gallon reservoir stores hydraulic fluid, with a filter-strainer in the suction line to assure clean, filtered fluid. This electrically powered model also delivers sufficient power to operate the tools up to 100 feet away.

- Flow Rate:** 2 GPM
- Power:** Electric: 220, 440 or 550 volts, 3 phase
- Weight:** 708 lbs, operational; 585 lbs without fluid
- Length:** 44" L x 25" W x 30" H

Also Available: 918(-5) RIG
operates up to 3 tools **Part # 5919185**

HUCK

Model 202



PNEUDRAULIC TOOL

The Model 202 is a lightweight, high-speed tool. **Suited for both production and maintenance repair where 3/16" Huck Bolts & 1/4" and smaller blind diameter fasteners are used.**

The 202 features an in-line piston for production rates of up to 35 installations per minute. The 202's ergonomically designed handle and light weight combine to minimize operator fatigue.

Byler Part #: 591202



TOOL SPECIFICATION

Sets: 3/16" & 1/4" Magna-Lok, Magna-Bulb, Auto-Bulb, 3/16" Magna-Grip & C6L / 120L

Weight: 5.1 lbs without nose assembly

Req. Air Pressure: 90-100 psi

Stroke: .750"

Hydraulic Fluid: Automatic Transmission Fluid DEXTRON II® or equivalent

Pull Capacity: 3889 lbs

Options: 202B - with pintail collection bottle
202V - with vacuum assist pintail collection bottle
202L - with extended piston
202LV - with vacuum & extended piston

Model 2022



PNEUDRAULIC TOOL

The Model 2022 is a lightweight, high-speed tool. Suited for both production and maintenance/repair where 3/16" Huck Bolts & 1/4" and smaller blind diameter fasteners are used. Ergonomically designed handle.

Byler Part #: 5912022

TOOL SPECIFICATION

Sets: 3/16" & 1/4" Magna-Lok, Magna-Bulb, Auto-Bulb, 3/16" Magna-Grip & C6L / 120L

Weight: 5.4 lbs

Req. Air Pressure: 90-100 psi

Stroke: 1.026"

Pull Capacity: 3889 lbs

Options: 2022B - with pintail collection bottle
2022V - with vacuum assist pintail collection bottle
2022L - with extended piston
2022LV - with vacuum & extended piston

Model 2024



PNEUDRAULIC TOOL

The Model 2024 is the workhorse of the Huck 2000 Series. It combines added stroke & increased pulling capacity to handle most jobs using up to 1/4" blind fasteners & two piece bolts. It is designed to pull 1/4" HuckLok in one stroke.

Byler Part #: 5912024

TOOL SPECIFICATION

Sets: 3/16" Huckbolts; 3/16" & 1/4" Magnalok; 3/16" & 1/4" HuckLok

Weight: 5.5 lbs

Req. Air Pressure: 90-100 psi

Stroke: .850"

Capacity: 3993 lbs @ 90 psi

Options: 2024L - with extended piston

Model 2015



PNEUDRAULIC TOOL

The Model 2015 is a lightweight, high-speed tool that features an in-line piston for one-stroke installations of up to 35 cycles per minute. Ergonomically designed handle. Anvil inserts for nail-type rivets can be easily changed out to accommodate various sizes. The tool's nose diameter of .78" makes it ideal for close clearance applications.

Byler Part #: 5912015

TOOL SPECIFICATION

Sets: 3/16" & 1/4" Magna-Lok, Magna-Bulb & Auto-Bulb

Weight: 5.6 lbs

Req. Air Pressure: 90-100 psi

Stroke: .683"

Capacity: 90 psi

Options: Nose Inserts 125154 & 125155 are furnished with tool; others sold separately.

LEGEND

- * Replaceable Anvil
- ** Countersunk Avail.
- *** Button Head Avail.
- ° Available in 3/32", 1/8" & 5/32"
- § Available in 1/8", 5/32"

Nose Inserts for 2015

FASTENERS	DIA.	INSERT
Auto-Lock®, Auto-Clamp® & Auto-Bulb®	3/16"	59125154
Magna-Lok® & Magna-Bulb®	3/16"	59125154**
Magna-Tite®	3/16"	59125280**
	1/4"	59125282***
Grip-Rite®	3/16"	59125154 °
Stronghold®	3/16"	59125283 §
Peel®	1/4"	59125184

Nose Assemblies for 202, 2022 & 2024

FASTENERS	DIA.	STANDARD 3"	LONG 6"
Magna-Grip®	3/16"	592991456	592991457
		592993201	592993202
C6L®	3/16"	592993003	N/A
Magna-Lok®	3/16"	592993300	
		592993003*	
		592993301	
	1/4"	592993301	592993306*
	3/16" & 1/4"	592993487	N/A