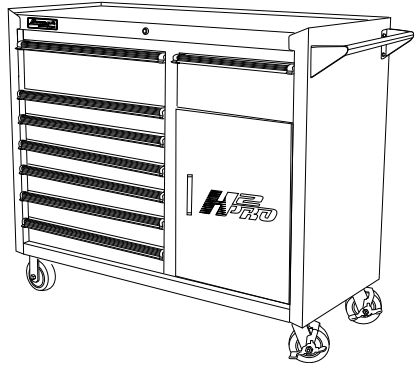


Homak

professional

MANUAL
& OPERATING INSTRUCTIONS



H2PRO

56" H2Pro SERIES 8 DRAWER ROLLING CABINET

MODEL:
BK04056082 - BLACK



WARNING:

1. Close and lock drawers before moving.
2. Do not stand on the product. You may fall which may cause personal injury.
3. Do not climb on, in or around. Keep away from children.
4. Unit has a maximum load capacity of 100 lbs (45.3 kgs) per drawer. Do not overload.
5. Do not push, pull to move.
6. Do not step in the drawers. You may fall which may cause personal injury.
7. Read all instructions and safety tips before using this product.

THANK YOU FOR PURCHASING A HOMAK UNIT. WE APPRECIATE YOUR BUSINESS.

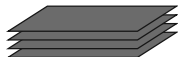
Congratulations on your new purchase!

Before operating your unit, please read the following carefully:

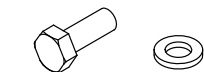
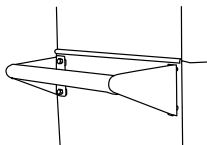
**KEEP INSTRUCTION MANUAL IN A SAFE PLACE UPON OPENING YOUR NEW UNIT.
THE KEY CODE TO YOUR HMC SECURE PREMIUM TUBULUR LOCK CAN BE FOUND
ON THE BACK OF THIS MANUAL.**

-
1. Before assembling parts, please check the parts quantity according to the PARTS LIST.
 2. Carefully unpack and spread out all parts in a large uncluttered area.
 3. Familiarize yourself with all parts and compare them with the drawing below to make sure none are missing. Read all assembly instructions before beginning.

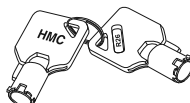
PARTS LIST



A) Foam Drawer Liners For
Each Drawer And Top Till



C) 2 Push Handles With
8 Bolts And 8 Washers



B) Keys



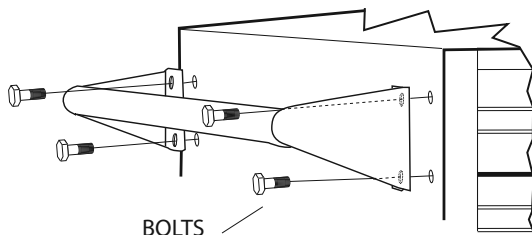
D) Door Handle



E) 2 Screws For
Door Handle

HANDLE ASSEMBLY:

Attach handle with the supplied hardware



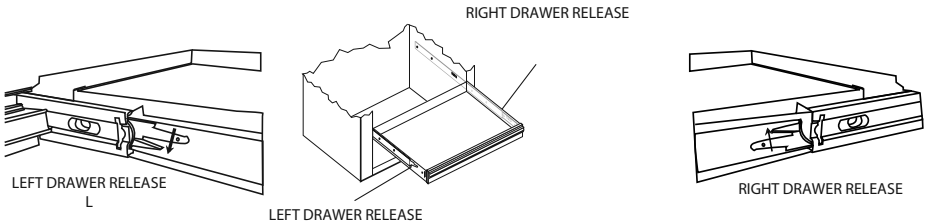
MAINTENANCE

Ball-Bearing Slides

Note: Unload drawer prior to drawer removal.

Never overload drawers.

To remove drawers and slides, pull drawer all the way out, depress the black drawer release levers on each slide. For ball-bearing glides, there is one black lever per slide. One black lever will be pushed down and the other will be pushed up for drawer removal. After levers are pushed, the drawer is released. Pull out drawer all the way for removal.



To re-install the drawer, insert guides on drawer side into slides and firmly close drawer all the way.

To maintain the smooth and quiet operation of the ball-bearing slides, lubricate the extension track that houses the ball bearings every 3-6 months with a high quality jelly-like petroleum based lubricant.

Powder Coat Finish

For heavy build-up of dirt and grime, our powder coat paint finish can be cleaned with WD-40 or Murphy's Oil Soap using a soft cloth when needed.

Window cleaner and a soft cloth dampened with water can be used to clean the finish on a regular basis.

Customer Satisfaction

All mechanical parts are inspected and adjusted for proper use before shipment; however, mechanisms such as drawer slides and locks may shift during transit.