

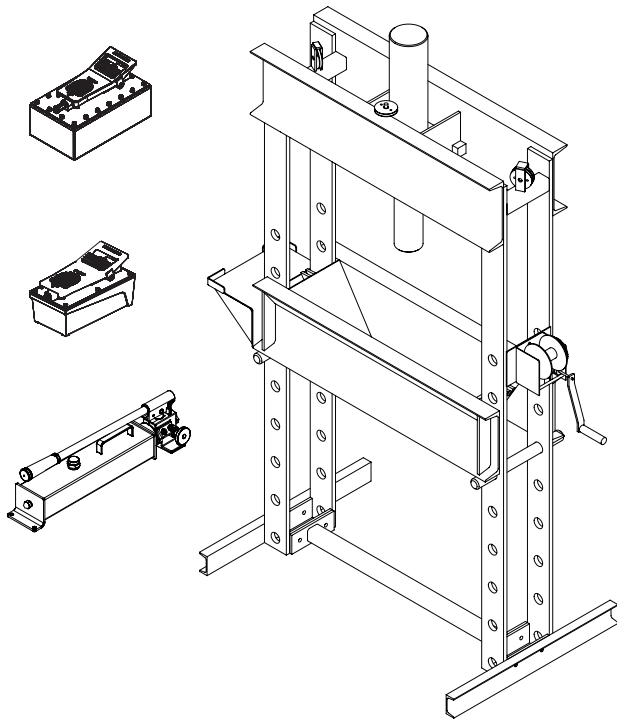


# Shop Presses

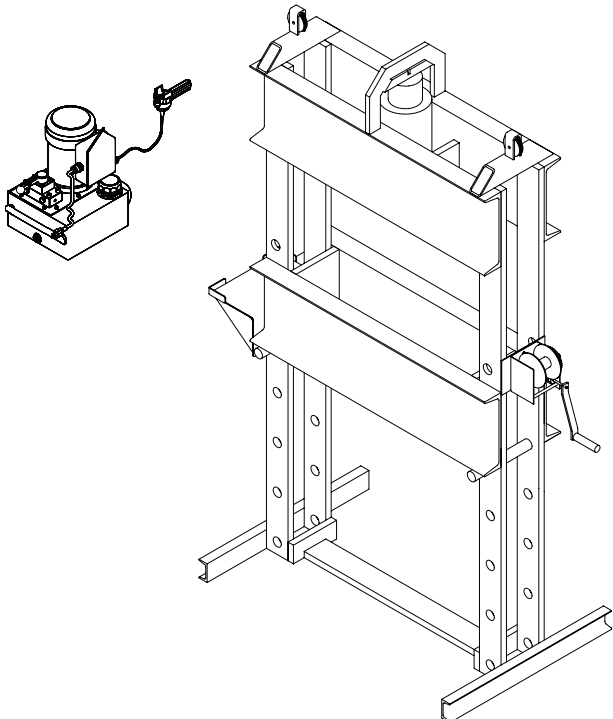
## Operating Instructions & Parts Manual

Model Number  
HW93400 thru HW93405  
HW93610, HW93615

Capacity  
55 Ton  
100 Ton



Models HW93400, HW93401, HW93402, HW93404,  
HW93405



Models HW93610, HW93615



*This is the safety alert symbol. It is used to alert you to potential personal injury hazards. Obey all safety messages that follow this symbol to avoid possible injury or death.*

**Read this manual and follow all the Safety Rules and Operating Instructions before using this product**

## **WARNING**

- *Study, understand, and follow all instructions before operating the device.*
- *Do not exceed rated capacity.*
- *Prior to use, make sure press is securely anchored.*
- *The press shall be installed and operated in accordance with federal (OSHA), state and local safety standards.*
- *Operators and observers shall wear eye protection that meets ANSI Z87.1 and OSHA standards.*
- *Keep hands, arms, feet and legs out of the work area. Accidental slippage can result in personal injury.*
- *Use appropriate guarding to contain any pieces that may break or fly apart when applying force.*
- *Use only press accessories having a capacity rating equal to or greater than the capacity of the press.*
- *Verify lift cables are slack before pressing on the bolster.*
- *Avoid off-center loads.*
- *No alterations shall be made to this product.*
- *Failure to heed and understand these instructions and markings may result in personal injury, property damage or both.*


## **SAFETY AND GENERAL INFORMATION**

**Save these instructions.** For your safety, read, understand, and follow the information provided with and on this device before using. The owner and/or operator shall have an understanding of the device, its operating characteristics and safety operating instructions before operating the equipment. The owner and/or operator shall be aware that use and repair of this product may require special skills and knowledge. Instructions and safety information shall be read to and discussed with the operator in the operator's native language, making sure that the operator comprehends their contents, before use of this equipment is authorized. If any doubt exists as to the safe and proper use of this device, remove from service immediately.

**Inspect before each use.** Do not use if abnormal conditions such as cracked welds, damaged, loose or missing parts are noted. Any equipment that appears damaged in any way, is found to be worn, or operates abnormally shall be removed from service until repaired. If the equipment has been or is suspected to have been subjected to an abnormal load or shock, immediately discontinue use until inspected by a factory authorized repair facility (contact distributor or manufacturer for list of authorized repair facilities). It is recommended that an annual inspection be made by an authorized repair facility. Labels and Operator's Manuals are available from the manufacturer.

## **PRODUCT DESCRIPTION**

Hein-Werner Shop Presses are designed for automotive, truck, implement, fleet, and industrial repair facilities where pressing, bending, straightening, forming, or holding is required. Each press includes a cylinder, a pump, and winch assembly which provides safe and fast way to raise and lower the bed frame, and a pressure gauge for monitoring the applied force. Typical applications include installation and removal of alternator and power steering pump bearings, axle bearings, transmission bearings, seals, driveshaft bearings and u-joints. It is not intended for use as an assembly table or as a fixture stand used to secure large, final assembly components. Refer to the BVA Cylinder and Pump manuals for more information.

 **WARNING:** *To reduce the risk of personal injury and/or property damage, ensure that the rated working pressure of each pressurized attachment is equal to or greater than the rated working pressure developed by the hydraulic pump.*

**NOTICE:** *The power retract feature of the HW93405 and HW93615 shop presses is not intended to be used under load. Do not pull or raise a workpiece with the power retract feature.*

## PREPARATION

1. Before using this product, read the operator's manual completely and familiarize yourself thoroughly with the product, its components and recognize the potential hazards associated with its use.
2. Inspect before each use. Do not use if bent, broken or cracked components are noted. Check for and tighten any loose components.
3. Verify that the product and the application are compatible, if in doubt call Hein-Werner Technical Service (816) 891-6390.

## SPECIFICATIONS

| Press Model | Rated Capacity | Cylinder Model | Pump Model/Type      | Press Bed Depth (front to back) | Press Bed Width (side to side) | Press Size (H" x W" x L") | Min. Work Height (in.) | Max. Work Height (in.) |
|-------------|----------------|----------------|----------------------|---------------------------------|--------------------------------|---------------------------|------------------------|------------------------|
| HW93400     | 55 Ton         | H5506          | P2001/manual         | 14-7/8"                         | 35-1/2"                        | 79-1/8 x 56 x 30          | 14                     | 55-1/2                 |
| HW93401     |                |                | PA2000/air-hydraulic |                                 |                                |                           |                        |                        |
| HW93402     |                |                | PE0501T/electric     |                                 |                                |                           |                        |                        |
| HW93403     |                | H5513          | PA3801/air-hydraulic |                                 |                                |                           |                        |                        |
| HW93404     |                |                | PE0501T/electric     |                                 |                                |                           |                        |                        |
| HW93405     |                |                | HD5513               |                                 |                                |                           |                        |                        |
| HW93610     | 100 Ton        | H10010         | PE1002T/electric     | 16-1/4"                         | 35-3/8"                        | 89-1/2 x 63 x 30          | 11-1/4                 | 52                     |
| HW93615     |                | HD10010        | PEM1002T/electric    |                                 |                                |                           |                        |                        |

## Cylinders

| Cylinder Model | Rated Capacity (ton) | Stroke (in.) | Effective Area (in <sup>2</sup> ) | Oil Volume (in <sup>3</sup> ) | Outer Dia. (in.) | Ram Dia. (in.) | Saddle Dia. (in.) | Collar Thread (in.) | Collar Thread Length (in.) |
|----------------|----------------------|--------------|-----------------------------------|-------------------------------|------------------|----------------|-------------------|---------------------|----------------------------|
| H5506          | 55                   | 6.22         | 10.99                             | 68.34                         | 5                | 3.15           | 2.76              | 5"-12               | 2.17                       |
| H5513          |                      | 13.27        |                                   | 145.77                        |                  |                |                   |                     |                            |
| HD5513         |                      | 13.19        |                                   | 144.94                        | 5                | 3.74           |                   |                     |                            |
| H10010         | 100                  | 10.24        | 20.57                             | 210.6                         | 6.97             | 4.13           | 6-7/8"-12         | 1.73                |                            |
| HD10010        |                      | 10.13        |                                   | 208.3                         |                  |                |                   |                     | 3.74                       |

## Manual Pumps (Hand pumps)

| Hand Pump Model | Usable Oil Volume (in <sup>3</sup> ) | Pressure Rating (psi) |           | Oil Displacement (in <sup>3</sup> ) |           | Oil Outlet Port Thread | Weight (lbs) |
|-----------------|--------------------------------------|-----------------------|-----------|-------------------------------------|-----------|------------------------|--------------|
|                 |                                      | 1st Stage             | 2nd Stage | 1st Stage                           | 2nd Stage |                        |              |
| P2001           | 122                                  | 200                   | 10,000    | 0.81                                | 0.14      | 3/8"-18 NPTF           | 24           |

## Air Pumps

| Air Pump Model | Usable Oil Volume (in <sup>3</sup> ) | Pressure Rating (psi) | Oil Output Flow Rate (in <sup>3</sup> /min) |      | Input Air Pressure Range (psi) | Weight (lbs) |
|----------------|--------------------------------------|-----------------------|---|------|--------------------------------|--------------|
|                |                                      |                       | No Load                                     | Load |                                |              |
| PA1500         | 91.5                                 | 10,000                | 65  | 11   | 110-175                        | 18           |
| PA2000         | 122.1                                |                       |   | 12   |                                | 20           |
| PA3801         | 232                                  |                       |   | 11   |                                | 27           |

## Electric Pumps

| Electric Pump Model | Reservoir Capacity (gal) | Pressure Rating (psi) |           | Oil Output Flow Rate (in <sup>3</sup> /min) |           | Valve Type   | Motor Size (hp) | Current Draw (A) | Motor Voltage (V) | Weight (lbs) |
|---------------------|--------------------------|-----------------------|-----------|---|-----------|--------------|-----------------|------------------|-------------------|--------------|
|                     |                          | 1st Stage             | 2nd Stage | 1st Stage                                   | 2nd Stage |              |                 |                  |                   |              |
| PE0501T             | 11                       | 350                   | 10,000    | 293   | 18        | 3-way, 3-pos | 0.5             | 9                | 115/125           | 60           |
| PEM0501T            |                          |                       |           |   |           | 4-way, 3-pos |                 |                  |                   |              |
| PE1002T             | 2                        | 700                   | 10,000    | 397   | 37        | 3-way, 3-pos | 1               | 12               | 115/125           | 71           |
| PEM1002T            |                          |                       |           |   |           | 4-way, 3-pos |                 |                  |                   |              |

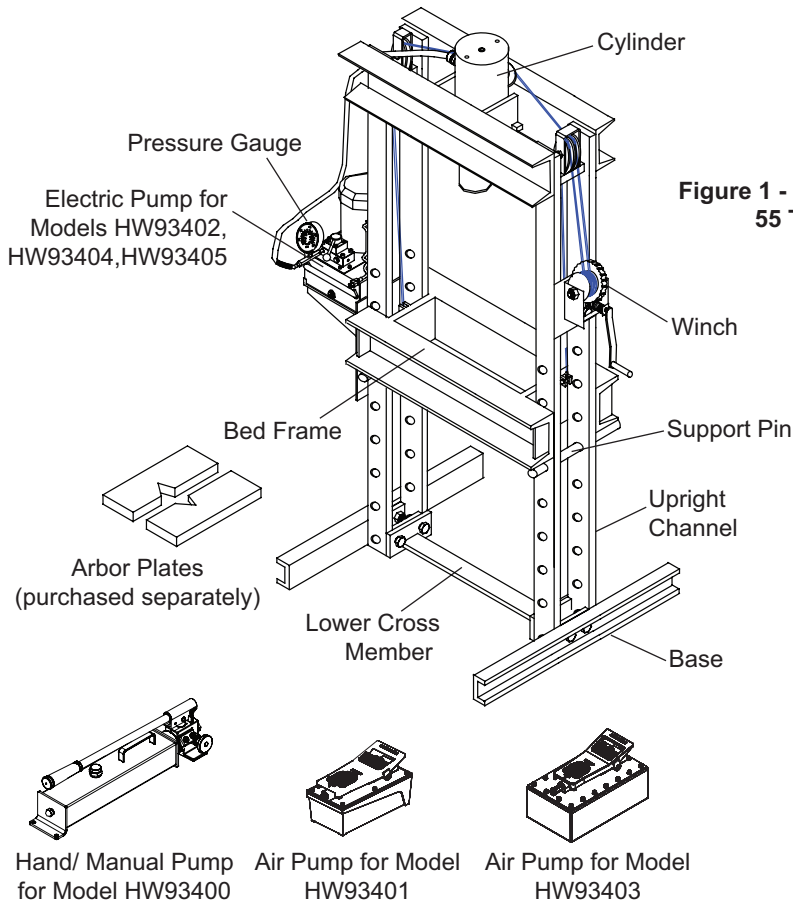


Figure 1 - Components for 55 Ton Press

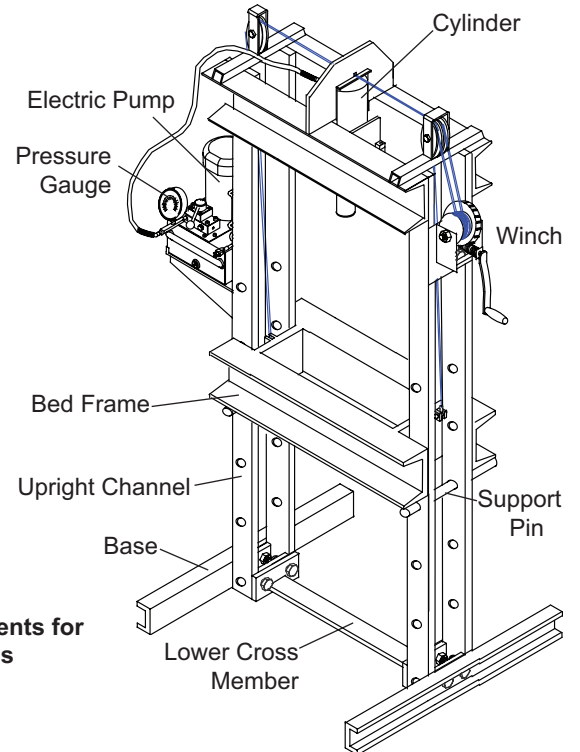


Figure 2 - Components for 100 Ton Press

## ASSEMBLY

1. Adjust Bed Frame to lowest position and slacken Winch Cable.
2. Install Winch Assembly to press using (3) 3/8" bolts, washers and nuts.
3. Secure Cylinder to Cylinder Adapter Plate, and mount Adapter Plate to upper cross member using (4) 1/2" bolts and washers. Cylinder carrying handles may be removed by loosening Allen head screws.
4. Attach Base Frame Channels to Upright Channels with (4) 1/2" bolts and nuts.
5. Attach Lower Cross Member to Upright Channels with (4) 1/2" bolts and nuts.
6. Adjust the Pump Platform to desire height and secure with (4) 3/8" bolts, nuts & washers provided.
7. Connect the Pressure Gauge and the Hydraulic Hose to the Gauge Adapter, then connect the Gauge Adapter to Pump.


**NOTICE:** Use thread tape or compound on all threaded hose connections.


8. For models HW93405 and HW93615: Attach second hose to Port B on Control Valve. Attach second coupler to free hose end. Connect coupler to bottom port on Cylinder.
9. Place pump on pump bracket and connect other end of hydraulic hose to cylinder.

 **CAUTION:** Before disassembling, slide bed frame section down, into its lowest position.


## OPERATION

Refer to **BVA Owner's Manual** for cylinder and pump operation.

 **WARNING:** Shop press use can involve a projectile hazard. Ensure workpiece is centerloaded and secure. Reduce risk of flying debris by following all operating instructions. Know your press and hazards associated with its use. Keep hands and feet from bed area at all times.

 **WARNING:** Risk of serious eye injury from projected debris. Reduce risk by wearing safety goggles when working with or around press.

1. Insert support pins at desired height, then use winch to lower bed frame until cable is slack and bed frame is resting fully on support pins.
2. Place arbor plates on bed frame (purchased separately).
3. Secure workpiece to bed frame using every precaution necessary to ensure safety and prevent property damage.
4. Pump operation:
  - a) For HW93400 manual pump: Close release valve by turning clockwise, pump handle to extend cylinder ram. To retract, open pump release valve.
  - b) For HW93401 and HW93403 air pump: Connect to suitable air supply, press foot pedal to extend cylinder ram. To retract, activate release valve by pressing raised, stirrup shaped portion of foot pedal.
  - c) For HW93402, HW93404, HW93405, HW93610 and HW93615 electric pump: Engage ON/OFF switch to start electric pump, then let pump idle for a few minutes before operating cylinder. Use control valve knob to extend or retract cylinder ram.

 **WARNING:** Burst hazard exists if hose or connection pressure exceeds rated pressure. Always monitor the pressure gauge while in operation and never leave loaded press unattended.

**NOTICE:** The power retract feature of the HW93405 and HW93615 shop presses is not intended to be used under load. Never pull or raise a workpiece with the power retract feature.

**NOTICE:** Never operate pump with hose disconnected from cylinder. If operated in this condition, the hydraulic hose and connections become pressurized, increasing burst hazard.

5. Apply load to workpiece - **do not overload**.
6. Stabilize workpiece so that it will not inadvertently fall from bed frame once load is removed.
7. Once cylinder has fully retracted, remove workpiece.

**NOTICE:** To protect your cylinder, cease pump operation after cylinder plunger is fully extended or retracted.

## MAINTENANCE

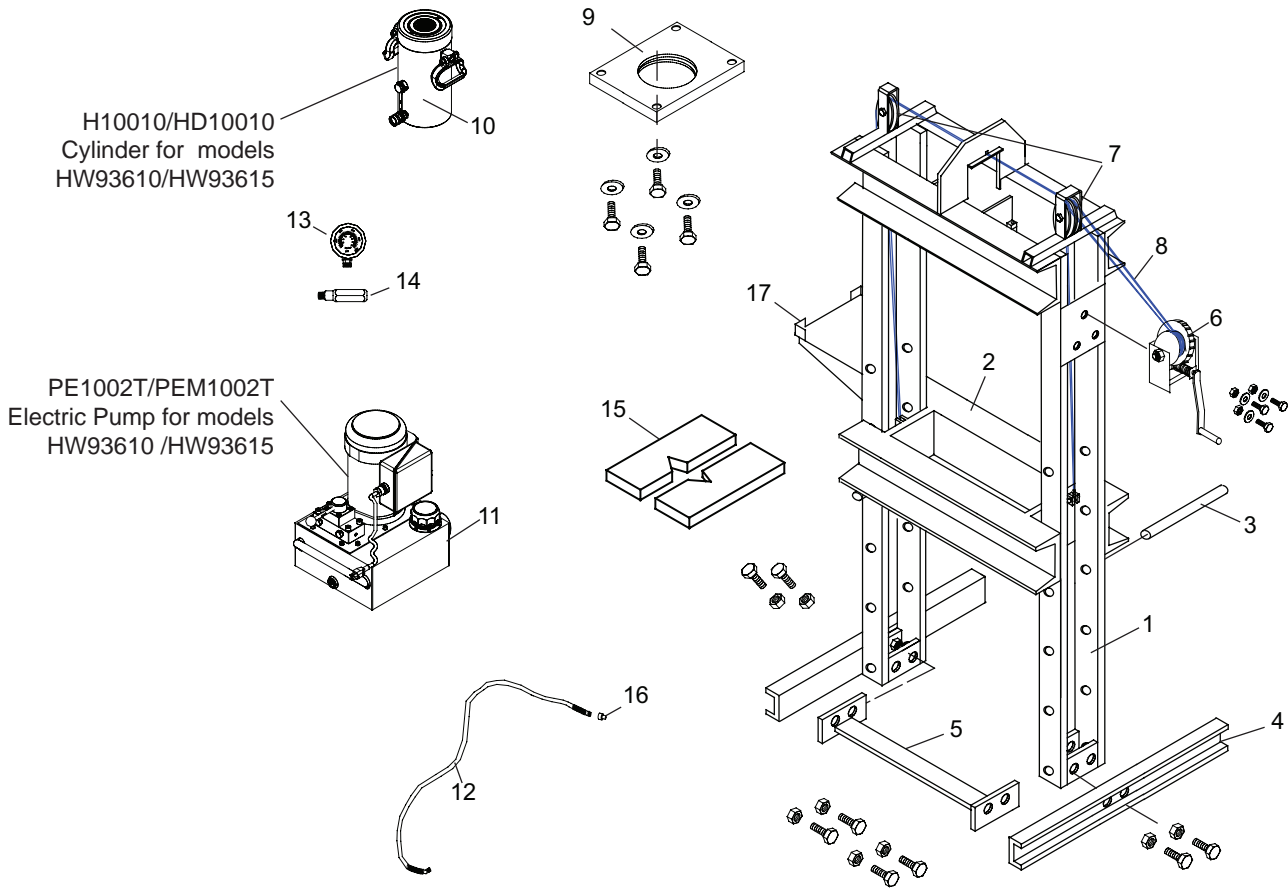
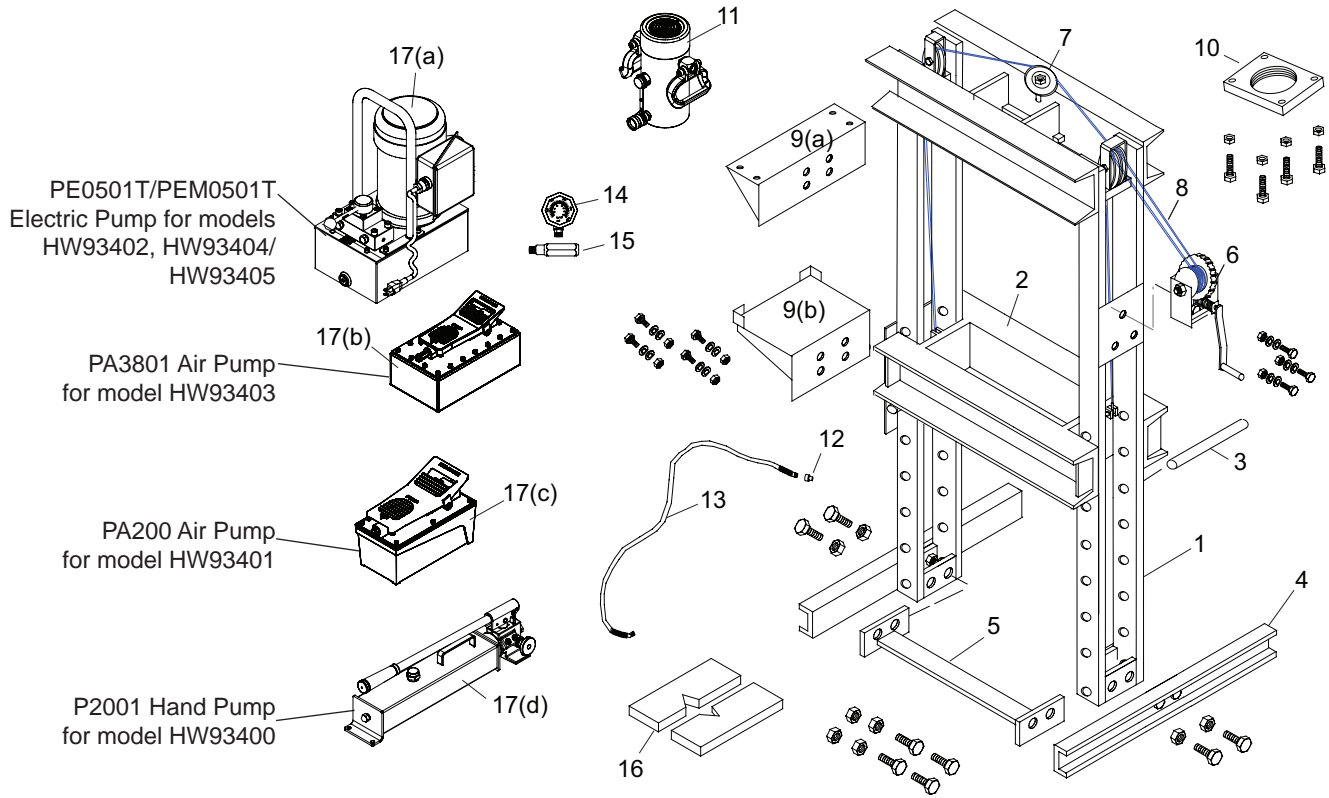
Reference cylinder and pump manuals for maintenance and adding/changing hydraulic oil instructions. For best results, change the oil once a year. Always use premium quality hydraulic oil.

### Lubrication

A periodic coating of light lubricating oil to pivot points and hinges will prevent rust and assure assemblies move freely.

### Storage

Depressurize the hydraulic system, disconnect hydraulic hose and lower the bed frame to lowest position. Disconnect both hoses on the HW93405 and HW93615 Double Acting Shop Presses.



## REPLACEMENT PARTS (ref. illustration on pg. 6)

Not all components of the press are replacement items, but are illustrated as convenient reference for position in the assembly sequence. When ordering parts, give model number, serial number and parts description. Call or write for current pricing: Hein-Werner Customer Support, 10939 N. Pomona Ave. Kansas City, MO 64153; Tel: (816) 891-6390; customerservices@heinwerner-automotive.com. For cylinder and pump service parts, please refer to BVA owner's manuals.

### Replacement Parts for 55-ton Shop Press

| Item | Part No. for Model: |             |            |           |            |          | Description                | Qty |
|------|---------------------|-------------|------------|-----------|------------|----------|----------------------------|-----|
|      | HW93400             | HW93401     | HW93402    | HW93403   | HW93404    | HW93405  |                            |     |
| 1    | N/A                 |             |            |           |            |          | Shop Press Frame           | 1   |
| 2    | N/A                 |             |            |           |            |          | Bed Frame                  | 1   |
| 3    | 400-002-003         |             |            |           |            |          | Bed Support Pin            | 2   |
| 4    | 400-002-004         |             |            |           |            |          | Frame Base Channel         | 2   |
| 5    | 400-002-005         |             |            |           |            |          | Lower Stabilizer           | 1   |
| 6    | 400-002-006         |             |            |           |            |          | Winch                      | 1   |
| 7    | 400-002-007         |             |            |           |            |          | Cable Sheaves (Pulley)     | 4   |
| 8    | 400-002-008         |             |            |           |            |          | Cable                      | 2   |
| 9    | 400-002-009         | 400-002-011 |            |           |            |          | Pump Platform              | 1   |
| 10   | 400-002-012         |             |            |           |            |          | Cylinder Adapter Plate     | 1   |
| 11   | H5506               |             |            | H5513     |            | HD5513   | Cylinder, 55-ton           | 1   |
| 12   | CH38M               |             |            |           |            |          | Male Half Coupler, 3/8"    | 1*  |
| 13   | CS3838              | CS3838C     | CS3838     | CS3838C   | CS3838     | CS3838   | Hydraulic Hose, 3/8"ID     | 1*  |
| 14   | GW4014              |             |            |           |            |          | Wet Pressure Gauge         | 1   |
| 15   | CF3814              |             |            |           |            |          | Gauge Adapter              | 1   |
| 16   | AP55                |             |            |           |            |          | Arbor Plates, 55 Ton       | 1   |
| 17   | P2001(d)            | PA2000(c)   | PE0501T(a) | PA3801(b) | PE0501T(a) | PEM0501T | Pump                       | 1   |
| 18   | 300-002-016         | N/A         | N/A        | N/A       | N/A        | N/A      | Pump Mounting Hardware Kit | 1   |

### Replacement Parts for 100-ton Shop Press

| Item | Part No. for Model |          | Description             | Qty |
|------|--------------------|----------|-------------------------|-----|
|      | HW93610            | HW93615  |                         |     |
| 1    | N/A                |          | Shop Press Frame        | 1   |
| 2    | N/A                |          | Bed Frame               | 1   |
| 3    | 610-002-003        |          | Bed Support Pin         | 2   |
| 4    | 610-002-004        |          | Frame Base Channel      | 2   |
| 5    | 610-002-005        |          | Lower Stabilizer        | 1   |
| 6    | 610-002-006        |          | Winch                   | 1   |
| 7    | 610-002-007        |          | Cable Sheaves (Pulley)  | 3   |
| 8    | 610-002-008        |          | Cable                   | 2   |
| 9    | 610-002-009        |          | Cylinder Adapter Plate  | 1   |
| 10   | H10010             | HD10010  | Cylinder, 100-ton       | 1   |
| 11   | PE1002T            | PEM1002T | Pump, Electric          | 1   |
| 12   | CS3838             |          | Hydraulic Hose, 3/8"ID  | 1*  |
| 13   | GW4014             |          | Wet Pressure Gauge      | 1   |
| 14   | CF3814             |          | Gauge Adapter           | 1   |
| 15   | AP100              |          | Arbor Plates, 100 Ton   | 1   |
| 16   | CH38M              |          | Male Half Coupler, 3/8" | 1*  |
| 17   | 400-002-011        |          | Pump Platform           | 1   |

\*Qty 2 for HW93405 and HW93615 Double Acting Presses



## TROUBLESHOOTING

A system failure may or may not be the result of a pump malfunction. The following information is intended to be used as an aid in determining if a problem exist.

| Symptom   | Possible Causes   | Corrective Action  |
|---|---|--|
| Erratic Ram Performance   | <ul style="list-style-type: none"> <li>Air in system or pump cavitation</li> <li>External leak</li> <li>Internal hydraulic leak</li> </ul>  | <ul style="list-style-type: none"> <li>Follow pump instructions for bleeding air</li> <li>Tighten all connections</li> <li>Contact authorized Service Center</li> </ul>  |
| Pump or ram fails to maintain pressure                            | <ul style="list-style-type: none"> <li>Overload condition</li> <li>External leak</li> <li>Internal hydraulic leak</li> <li>Ram seals leaking</li> <li>Pump or valve malfunctioning</li> </ul>   | <ul style="list-style-type: none"> <li>Remedy overload condition</li> <li>Tighten all connections</li> <li>Contact authorized Service Center</li> <li>Contact authorized Service Center</li> <li>Check pump operating instructions</li> </ul>  |
| Ram extends partially   | <ul style="list-style-type: none"> <li>Hydraulic oil level too low in pump</li> <li>Load is above the capacity of system</li> <li>Ram is sticking or binding</li> </ul>   | <ul style="list-style-type: none"> <li>Fill and bleed the system</li> <li>Match the capacity to application</li> <li>Contact authorized Service Center</li> </ul>  |
| Slow ram movement   | <ul style="list-style-type: none"> <li>Loose connection or coupler</li> <li>Restricted hydraulic line or fitting</li> <li>Pump not working correctly</li> <li>Ram seals leaking</li> </ul>  | <ul style="list-style-type: none"> <li>Tighten connection or coupler</li> <li>Clean and replace if damaged</li> <li>Check pump operating instructions</li> <li>Replace cylinder</li> </ul>   |
| Ram leaks hydraulic fluid   | <ul style="list-style-type: none"> <li>Worn or damaged seals</li> </ul>   | <ul style="list-style-type: none"> <li>Contact authorized Service Center</li> </ul>  |
| Ram will not retract or retracts slower than normal               | <ul style="list-style-type: none"> <li>Linkage binding</li> <li>Loose couplers</li> <li>Malfunctioning coupler</li> <li>Weak or broken retraction springs</li> <li>Ram damaged internally</li> <li>Pump reservoir too full</li> </ul> | <ul style="list-style-type: none"> <li>Lubricate all moving parts</li> <li>Tighten couplers</li> <li>Depressurize pump and hose, remove application, then replace a new coupler</li> <li>Contact authorized Service Center</li> <li>Contact authorized Service Center</li> <li>Drain hydraulic fluid to correct level</li> </ul> |
| Motor will not start (Models HW93402, HW93404, HW93610 & HW93615) | <ul style="list-style-type: none"> <li>No power or wrong voltage</li> <li>Damaged power cord</li> <li>Tripped circuit breaker</li> <li>Loose or faulty wiring</li> </ul>  | <ul style="list-style-type: none"> <li>Check the power supply &amp; voltage</li> <li>Contact Customer Service</li> <li>Make sure breaker is of adequate size</li> <li>Contact Customer Service</li> </ul>  |
| Motor cuts out (Models HW93402, HW93404, HW93610 & HW93615)       | <ul style="list-style-type: none"> <li>Extension cord too long</li> <li>Faulty motor</li> <li>Overheated motor can trip circuit breaker</li> </ul>  | <ul style="list-style-type: none"> <li>Replace with shorter cord</li> <li>Replace or repair</li> <li>Allow motor to cool, reset circuit breaker</li> </ul>   |