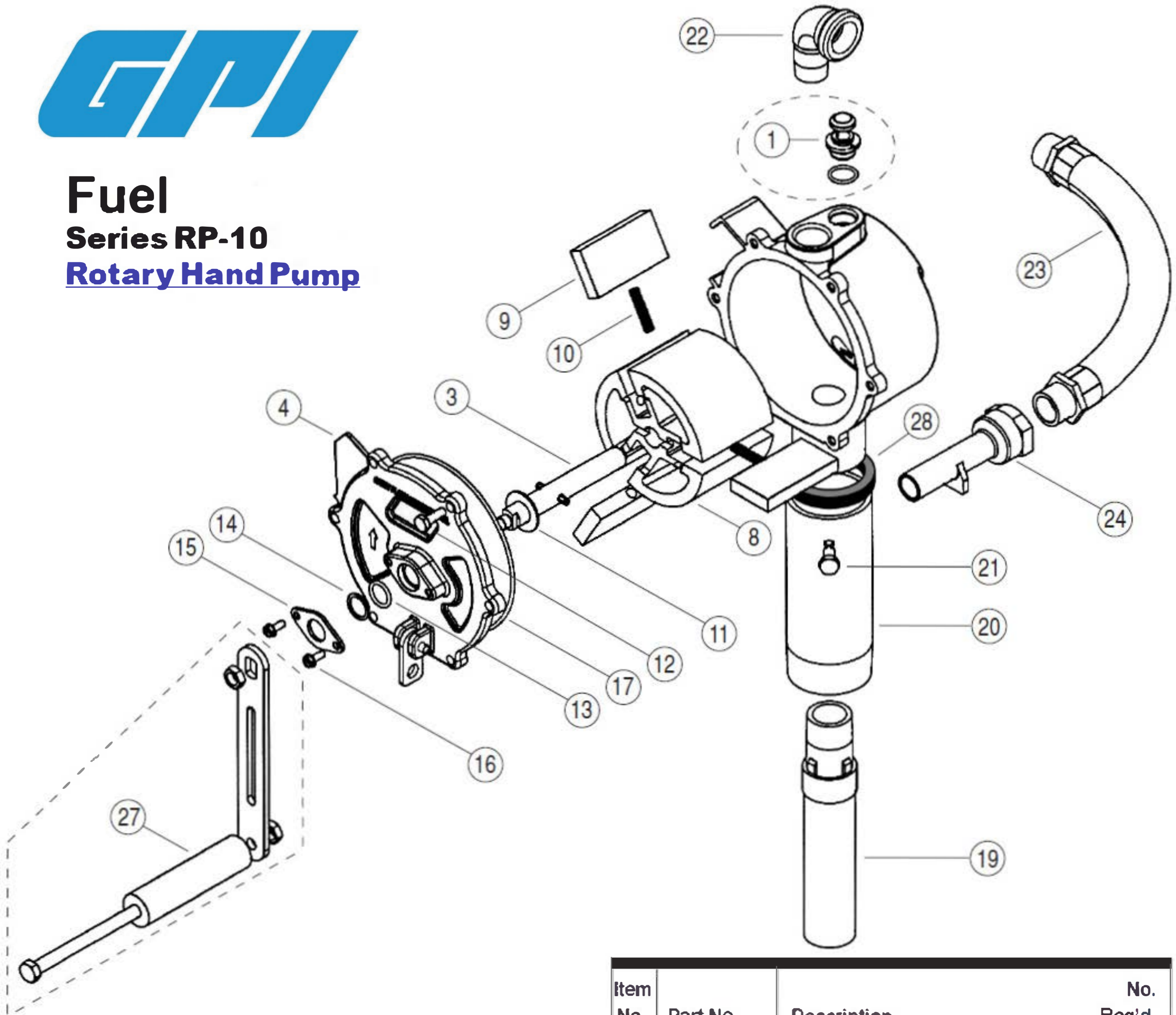




Fuel

Series RP-10

Rotary Hand Pump



Items Not Shown

- 114036-1 Plastic Nozzle
- 901001-90 Base O-Ring

Kits and Accessories

- A** 123501-1 Shaft Seal Kit (includes O-Ring, Back-up Ring & Seal)
- B** 123503-1 Overhaul Kit (includes Vanes, Springs & Shaft Seal Kit)
- 123505-3 Hardware Kit
- 115527-2 Suction Pipe Extension, 15 in. or 38.1 cm

Item No.	Part No.	Description	No. Req'd.
1	123504-1	Anti-Siphon Vent Kit	1
3	123507-1	Shaft Assy Kit.....	1
4	123008-1	Coverplate.....	1
8	123509-1	Rotor with Springs Kit	1
9	123011-1	Vaness or (Kit B)	3
10	123012-1	Spring or (Kit B)	3
11	904004-71	Washer	1
12	904004-16	Screw, 1/4-20 x 3/4 in.	6
13	901003-63	O-Ring or (Kit A & B)	1
14	901002-58	Back-up Ring or (Kit A & B)	1
15	123013-1	Retainer	1
16	904004-60	Retainer Screws.....	2
17	901003-64	O-Ring or (Kit A).....	1
19	110100-1	Suction Pipe Assy	1
20	123015-1	Riser.....	1
21	904004-59	Set Screws.....	2
22	904004-73	Elbow Fitting	1
23	114045-1	Hose Assy	1
24	114047-1	Metal Nozzle	1
27	123506-1	Crank Assy Kit.....	1
28	12304001	Seal, RP-10 Riser	1