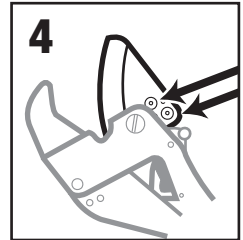
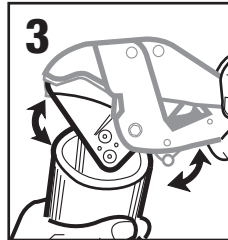
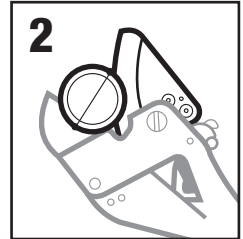




No. 119

Exclusive Auto-Open Feature! Allows One-Handed Operation! Easy Blade Change! Adjustable Stop!

- For cutting PVC, CPVC, Polyethylene, PEX and ABS tubing 1/8" to 1-5/8" (3mm–42mm).
- One-handed Operation.
- Quick-Blade Reset.
- Ratchet system holds blade in place while you adjust your grip to increase pressure.
- High carbon steel blade maintains sharpness and resists chipping.
- Handle is ergonomically designed for comfort and grip pressure.
- Handle locking strap for safe storage.
- Exclusive, easy replaceable blade feature.
- Replacement Blade, No.119BG, is available.



INSTRUCTIONS:

1. Push apart auto-open lower handle. Blade clicks open (Figure 1).
2. Place the plastic tube to be cut (maximum 1-5/8" diameter) in the cutter (Figure 2).
3. Squeeze and release the cutter handles until final cut through the pipe (Figure 3).
4. REPLACING THE BLADE (No.119BG)
 - A. Unscrew the two screws holding the blade with the Hex wrench. Do not discard screws or nuts. Remove the old blade.
 - B. Insert new blade and screw tight using screws and nuts removed in Step A.



Avoid injury: Always wear OSHA/ANSI approved eye protection (goggles, face shield) when using tools.

Learn more about hand tools we have.