

FLUKE®

**Fluke Digital
Multimeters**

**Solutions
for every need**



How to choose the best DMM for your job

Choosing the right digital multimeter (DMM) requires thinking about what you'll be using it for. Evaluate your basic measurement needs and job requirements and then take a look at special features/functions built into many multimeters. Think about whether you need to do basic measurements, or if you need the more advanced troubleshooting options offered by special features.

Factors to consider:

- Your work environment (voltage level, types of equipment, types of measurements, applications)
- Specialty features/functions (capacitance, frequency, temperature, non-contact voltage, low impedance mode, min/max record, data logging, trending)
- Resolution and accuracy (6,000, 20,000, or 50,000 count resolution)

Safety

The increased occurrence and levels of transient overvoltages in today's power systems have given rise to more stringent safety standards for electrical measurement equipment. Transients that ride on top of power sources (mains, feeder or branch circuits) can trigger a sequence of events that may lead to serious injury. Test equipment must be designed to protect people working in this high-voltage, high-current environment.

Measurement categories at a glance

	In brief	Examples
CAT IV	Three-phase at utility connection, any outdoor mains conductors	<ul style="list-style-type: none"> • Refers to the "origin of installation," i.e., where low-voltage connection is made to utility power • Electricity meters, primary overcurrent protection equipment • Outside and service entrances, service drop from pole to building, run between meter and panel • Overhead line to detached building, underground line to well pump
CAT III	Three-phase distribution, including single-phase commercial lighting	<ul style="list-style-type: none"> • Equipment in fixed installations, such as switchgear and polyphase motors • Bus and feeders in industrial plants • Feeders and short branch circuits, distribution panel devices • Lighting systems in larger buildings • Appliance outlets with short connections to service entrance
CAT II	Single-phase receptacle connected loads	<ul style="list-style-type: none"> • Appliance, portable tools, and other household and similar loads • Outlet and long branch circuits <ul style="list-style-type: none"> – Outlets at more than 10 meters (30 feet) from CAT III source – Outlets at more than 20 meters (60 feet) from CAT IV source

Wirelessly relay data with Fluke Connect® Meters

Meters can be used as a stand-alone tool or as part of the Fluke Connect system



The largest system of software and wireless test tools in the world.



ir3000 FC Connector

Adds the power of the Fluke Connect® mobile app to your measurements.

- Fits over the IR port of your existing Fluke tools (289, 287 or 789)
- Enables you to graph, save, and share readings with your team from your smart phone



a3000 FC Wireless AC Current Clamp Meter

- Measure up to 400 A ac true-rms
- Inrush function
- Logging function for recording and saving up to 65,000 readings



a3001 FC Wireless iFlex AC Current Clamp Meter

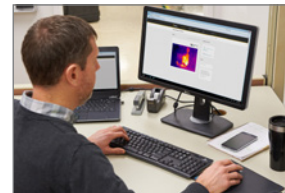
- Measure up to 2500 A ac with a true-rms flexible current meter
- Record over time (up to 65,000 readings) to monitor circuit load changes for an hour, a shift or a week
- Inrush function



a3003 FC Wireless DC 2000 A Current Meter

- Measure up to 2000 A dc
- Large jaw size (64 mm) for measuring large or parallel current conductors
- Logging function for recording and saving up to 65,000 readings

Fluke 279 FC Thermal Multimeter



Find. Repair. Validate. Report.

The 279 FC is a full-featured digital multimeter with integrated thermal imaging and is designed to increase your productivity and confidence. The thermal multimeter helps you find, repair, validate, and report many electrical issues quickly so that you are confident problems are solved.

Locate the problem immediately

Thermal imaging multimeters are a first-line troubleshooting tool for electrical equipment that can check hot spots on high-voltage equipment and transformers, detect heating of fuses, wires, insulators, connectors, splices and switches. Scanning with the 279 FC's thermal imager reveals many electrical issues rapidly and from a safe distance. By combining two tools into one, the thermal multimeter lightens the load and increases productivity.

Expanded functionality

Compatible with iFlex® (a flexible current clamp) to expand your measurement capabilities and get into tight, hard to reach spaces for current measurement (up to 2500 A ac). The large full-color LCD screen makes for easier and clearer viewing of images and readings. The 10 hour+ rechargeable battery keeps you going all day long under normal conditions.

Communicate your results

With built-in Fluke Connect®, transmit results wirelessly to a smartphone and save time on reporting to validate work is complete. Troubleshoot better by instantly trending and monitoring measurements live on your smartphone screen. Create and email reports right from the field.



a3004 FC Wireless DC 4-20 mA Current Meter

- Measure 4 to 20 mA dc signals without breaking the loop
- Logging function for recording and saving up to 65,000 readings



v3000 FC Wireless AC Voltage Meter

- Measure up to 1000 V true-rms ac
- Logging function for recording and saving up to 65,000 readings



v3001 FC Wireless DC Voltage Meter

- Measure up to 1000 V dc
- Logging function for recording and saving up to 65,000 readings



t3000 FC Wireless Temperature Meter

- Measure -200 °C to 1372 °C with k-type thermocouple
- Logging function for recording and saving up to 65,000 readings

Meters designed for the way you work

ADVANCED METERS

GENERAL PURPOSE



289/287



87V



3000 FC



233



179



77 IV

Basic features						
Counts	50000	20000	6000	6000	6000	6000
True-rms readings	ac+dc	ac	ac	ac	ac	
Basic dc accuracy	0.025 %	0.05 %	0.09 %	0.25 %	0.09 %	0.3 %
Wide bandwidth	100 kHz	20 kHz				
Auto / manual ranging	• / •	• / •	• / •	• / •	• / •	• / •
Digits	4-1/2	4-1/2	3-1/2	3-1/2	3-1/2	3-1/2
ATEX II 2G Eex ia IICt4 safety rating Zone 1 and Zone 2						
Measurements						
Voltage ac/dc	1000 V	1000V	1000 V	1000 V	1000 V	1000 V
Current ac/dc	10 A	10 A	400 mA	10 A	10 A	10 A
Resistance	500 MΩ	50 MΩ	50 MΩ	40 MΩ	50 MΩ	50 MΩ
Frequency	1 MHz	200 kHz	100 kHz	50 kHz	100 kHz	100 kHz
Capacitance	100,000 µF	10,000 µF	10,000 µF	10,000 µF	10,000 µF	10,000 µF
Temperature	(+) 1350 °C	(+) 1090 °C		(+) 400 °C	(+) 400 °C	
Conductance / dB	50 nS / 60 dB	50 nS / -				
Duty cycle / pulse width	• / •	• / -				
Continuity / diode test	•	•	•	•	•	•
Motor Drive (ASD) Measurements	• (289)	•				
VoltAlert™, non-contact voltage detection						
VCHEK™						
LoZ: low input impedance	• (289)					
Lo ohms	• (289)					
Microamps	•	•				
Display						
Fluke Connect™-enabled	•*		•			
Dot matrix display	•		•			
Dual display	•		•			
Analog bargraph	•	•			•	•
Backlight	Two level	Two level	•	•	•	•
Graphical trend display	•					
Diagnostics and data						
Min/Max recording / with time stamp	• / •	• / -	• / -	• / -	• / -	• / -
Fast min/max	250 µs	250 µs				
Display Hold/Auto (Touch) Hold	• / •	• / •	• / •	• / •	• / •	• / •
Relative reference	•	•				
Stand alone logging	•					
Trend capture	•					
Readings memories	10,000		(With FC app)			
USB interface	•					
Other features						
Automatic selection, ac/dc volts						
Overmolded case, integrated holster	•		•	•	•	•
Removable holster		•				
Infrared camera resolution						
Infrared camera Range						
iFlex compatibility			(With separate modules)			
Insulation test voltages						
Pi/DAR timed ratio test						
Completely sealed and watertight						
Operating temperature range	-20 °C, +55 °C	-20 °C, +55 °C	-10 °C, +50 °C	-10 °C, +50 °C	-10 °C, +50 °C	-10 °C, +50 °C
Warranty and electrical safety						
Warranty (years)	Lifetime	Lifetime	3	3	Lifetime	Lifetime
Input alert	•	•				
Dangerous voltage indication	•	•		•	•	•
IP rating		IP 30	IP 54			
EN61010-1 CAT III	1000 V	1000 V	1000 V	1000 V	1000 V	1000 V
EN61010-1 CAT IV	600 V	600 V	600 V	600 V	600 V	600 V

* ir3000 FC Adapter required—sold separately

COMPACT METERS
SPECIALTY METERS

117/115
116
114/113
279 FC
1587 FC
28 II / 28 II Ex
27 II

Basic features							
Counts	6000	6000	6000	6000	6000	20000	6000
True-rms readings	ac	ac	ac	ac	ac	ac	
Basic dc accuracy	0.5 %	0.5 %	0.5 %	0.09 %	0.09 %	0.05 %	0.1 %
Wide bandwidth					5 kHz	20 kHz	30 kHz
Auto / manual ranging	• / •	• / •	• / •	• / •	• / •	• / •	• / •
Digits	3-1/2	3-1/2	3-1/2	3-1/2	4-1/2	3-1/2 / 4-1/2	3-1/2
ATEX II 2G Eex ia IICT4 safety rating Zone 1 and Zone 2						28 II Ex	
Measurements							
Voltage ac/dc	600 V	600 V	600 V	1000 V	1000V	1000 V	1000 V
Current ac/dc	10 A	600 µA		2500 A ac (with iFlex)	400 mA	10 A	10 A
Resistance	40 MΩ	40 MΩ	40 MΩ	50 MΩ	50 MΩ	50 MΩ	50 MΩ
Frequency	100 kHz	100 kHz		100 kHz	100 kHz	200 kHz	200 kHz
Capacitance	10,000 µF	10,000 µF		10,000 µF	10,000 µF	10,000 µF	10,000 µF
Temperature		(+) 400 °C		Infrared Camera -10 °C to 200 °C	(+) 537 °C	(+) 1090 °C	
Conductance / dB						60 nS / -	60 nS / -
Duty cycle / pulse width						• / -	• / -
Continuity / diode test	•	•	•	•	•	•	•
Motor Drive (ASD) Measurements				•	•	•	
VoltAlert™, Non-contact voltage detection	• (117)						
VCHEK™			• (113)				
LoZ: low input impedance	• (117)	•	•				
Lo ohms							
Microamps		•			•	•	•
Display							
Fluke Connect®-enabled				•			
Dot matrix display				•			
Dual display				•			
Analog bargraph	•	•	•			•	•
Backlight	•	•	•	•	•	Two level	Two level
Graphical trend display							
Diagnostics and data							
Min/Max recording / with time stamp	• / -	• / -	• / -	• / -	• / -	• / -	• / -
Fast min/max						250 µs	
Display Hold/Auto (Touch) Hold	• / -	• / -	• / -	• / •	• / •	• / •	• / •
Relative reference						•	•
Stand alone logging							
Trend capture							
Readings memories				(With FC app)	(With FC app)		
USB interface				•			
Other features							
Automatic selection, ac/dc volts	• (117)	•	•				
Overmolded case, integrated holster							
Removable holster	•	•	•	•	•	•	•
Infrared camera resolution				80 x 60			
Infrared camera Range				-10 °C, +200 °C			
iFlex compatibility				•			
Insulation test voltages					50 V, 100 V, 250 V, 500 V, 1000 V		
Pi/DAR timed ratio test					•		
Completely sealed and watertight						•	•
Operating temperature range	-10 °C, +50 °C	-10 °C, +50 °C	-10 °C, +50 °C	-10 °C, +50 °C	-20 °C, +55 °C	-40 °C, +55 °C / -15 °C, +50 °C	-40 °C, +55 °C
Warranty and electrical safety							
Warranty (years)	3	3	3	3	3	Lifetime / 3	Lifetime
Input alert	•	•	•	•	•	•	•
Dangerous voltage indication							
IP rating	IP 42	IP 42	IP 42	IP 40	IP 40	IP 67	IP 67
EN61010-1 CAT III	600 V	600 V	600 V	1000 V	1000 V	1000 V	1000 V
EN61010-1 CAT IV			600 V (113)	600 V	600 V	600 V	600 V

Digital Multimeter selection chart



Fluke 289



Fluke 287



Fluke 87V

Advanced meters

Best for

Advanced industrial troubleshooting, including data logging and graphing intermittent problems.

Logging

For unattended monitoring of signals over time, to detect intermittent problems.

Graphing

View logged values graphically in the field right on the meter, without a PC.

Working on VSDs

Take accurate voltage, current and frequency measurements on the output side of the drive at either the drive itself or the motor terminals.

Testing motor windings or contact resistance

Allows testing of resistance up to 50 ohms with one milliohm (0.001 ohm) resolution.

Best for

Advanced electronic applications, including data logging and graphing intermittent problems.

Logging

For unattended monitoring of signals over time, and characterize device performance.

Graphing

View logged values graphically in the field right on the meter, without a PC.

Monitoring two parameters at the same time

Dual display allows for monitoring of two selectable parameters.

Performance testing

Testing the frequency response of amplifiers and audio transmission line.

Best for

Industrial troubleshooting.

Working on VSDs

Take accurate voltage, current and frequency measurements on the output side of the drive at either the drive itself or at the motor terminals.

Industrial troubleshooting

All of the resolution and accuracy you need to solve more problems on motor drives, in-plant automation, power distribution, and electromechanical equipment.

Checking power quality

Capture glitches and spikes as short as 250 μ s. Identify irregular signals.


Fluke 3000 FC

Fluke 233

Fluke 179

General purpose meters

Best for

Fluke FC wireless test tools work together to help you troubleshoot faster.

Work faster, safer and easier with FC wireless test tools

The 3000 FC Multimeter displays the meter measurement, plus readings from up to three wireless modules, connect to your smart phone to see reading directly on your phone.

Build the system as your needs grow

Start with the multimeter and future proof your investment.

Best for

Remote display digital multimeter.

Take measurements in hard to reach places.

With its removable display, you have the flexibility to take measurements in hard to reach places or in areas with restricted access. You can be in two places at once and reduce the risk of arc flash by separating yourself from hazardous measurement situations.

Work more productively

Now one person can complete a test that would have required two people using ordinary test tools.

Best for

Every day use requiring true-rms, accurate, rugged meter.

Industrial troubleshooting

Applications requiring exceptional ease-of-use, ruggedness and reliability.

Electrical maintenance and troubleshooting

Variety of commercial electrical troubleshooting, installation and maintenance.

Temperature measurements

Built-in thermometer conveniently allows you to take temperature readings without having to carry a separate instrument.

Digital Multimeter selection chart



Fluke 117



Fluke 116



Fluke 115



Fluke 113

Compact meters

Best for
Wide variety of electrical work.

Electrical maintenance troubleshooting
When you need to eliminate false or “ghost” voltages or perform continuity, connection or basic wiring checks.

Non-contact voltage detection
Integrated non-contact voltage detection simplifies many tasks.

Best for
HVAC trouble-shooting.

Residential HVAC maintenance
Lower voltage HVAC residential maintenance, installation and troubleshooting.

Temperature and microamp measurements
Troubleshooting problems with HVAC equipment and flame sensors.

Best for
Electronic and field service applications.

Electronic troubleshooting
Troubleshoot a wide variety of measurement parameters, including frequency and capacitance.

Best for
Utility applications involving basic electrical tests.

Revenue meter tests:
Involving meter sets and reconnects, capacitor checks, detection of absence or presence of voltage, and for continuity, connections or basic wiring checks.

Simultaneous voltage and continuity checks
Check LoZ low impedance function allows users to check voltage and continuity simultaneously.


Fluke 279 FC

Fluke 1587 FC

Fluke 28 II/27 II

Fluke 28 II Ex

Specialty meters

Best for
First-line
troubleshooting.

**Helping you find,
repair, validate and
report** on electrical
issues quickly, gives you
the confidence that the
problem has been solved.

**Locate the problem
immediately**
Checking for hotspots on
high voltage equipment
and transforming and
motors.

Increased productivity
Use the thermal imager
to scan for problems
and then use the digital
multimeter further
troubleshoot.

**Preventive maintenance
simplified, rework
eliminated**
Save time and improve
the reliability of your
maintenance data by
wirelessly syncing
measurements directly to
an asset record or
work order using the
Fluke Connect® system.

Best for
Troubleshooting
and preventative
maintenance around
motors, generators, and
switch gear.

Insulations tests:
The insulation of
electrical power systems
can be tested for system
performance, system
safety, system reliability
and as part of asset
management.

Moisture tests:
Carrying out PI/DAR
timed ratio tests with
TrendIt™ graphs to
identifies moisture and
contaminated insulation
problems.

Working on VSDs
Take accurate voltage,
current and frequency
measurements on the
output side of the drive
at either the drive itself
or the motor terminals.

Best for
Harsh environments
requiring dustproof
and waterproof test
equipment.

**Industrial trouble-
shooting for indoor
and outdoor harsh
environments**
Dustproof, waterproof,
shockproof multimeter
designed to withstand
the toughest environ-
ments.

**Working on variable
speed drives (VSDs)**
Take accurate voltage,
current and frequency
measurements on the
output side of the drive
at either the drive
itself or at the motor
terminals. (28 II only)

Best for
Industrial troubleshooting
in explosive environments.

Safety and compliance
The Fluke 28 II Ex is an
intrinsically safe digital
multimeter designed
for use in dangerous or
explosive atmospheres.

Agency approvals
IECEx Ex ia IIC T4 Gb, Ex
ia IIIC T130 °C Db, I M1 Ex
ia I Ma.

**Industrial
troubleshooting**
Completely sealed, IP67
rated case; Withstands
drops up to 10 feet or
3 meters (with holster);
dustproof per IEC60529
IP6x; waterproof per
IEC60529 IPx7; meets
IEC Overvoltage Electrical
Safety Standard No.
61010-1:2001.

Fluke Connect™ ir3000 FC Connector

Technical Data

Connect your Fluke test tool with the ir3000 FC Connector and get all the benefits of the Fluke Connect mobile app

If you already have one of the tools below in your tool box or tool belt or are considering purchasing one, add the ir3000 FC Connector so you can communicate with Fluke Connect™ app.

- Fluke Connect ir3000 FC Connector allows you to wirelessly transfer data from your existing Fluke tools to your smart phone
- Fits over the IR port of your existing Fluke tools
- Immediately enables you to graph, save, and share the tool's readings with your team from your smart phone
- Identify and diagnose problems quickly and confidently
- Efficiently and safely capture real-time readings of the primary display from the field
- Share results instantly with your team
- Upgradeable by USB

Supported Fluke tools:

- Digital Multimeter: 287, 289
- Process Tool: 789

Supported smart phones:

- Android™ 4.4 & up
- iPhone® 4s & later

Review the information on both models below to ensure you are selecting the one that supports your existing Fluke tool. Next, download the Fluke Connect mobile app from the Apple or Google app store and get started.



Built with
**FLUKE
CONNECT™**

See it. Save it. Share it.
All the facts, right in the field.

Fluke Connect with ShareLive™ video call is the only wireless measurement system that lets you stay in contact with your entire team without leaving the field. The Fluke Connect mobile app is available for Android™ (4.4 and up) and iOS (4s and later) and works with over 20 different Fluke products—the largest system of connected test tools in the world. And more are on the way. Go to the Fluke website to find out more.

Make the best decisions faster than ever before by viewing all temperature, mechanical, electrical and vibration measurements for each equipment asset in one place. Get started saving time and increasing your productivity.

Download the app at:



Smart phone, wireless service and data plan not included with purchase.

General specifications

Model	FLUKE-IR3000FC
Battery type	Two AAA Alkaline batteries, ANSI-24A IEC-LR03
Battery life	6 hours of continuous transmission
RF communications	2.4 GHz ISM Band
RF communication range	Open air, unobstructed: Up to 20 m Obstructed, sheetrock wall: Up to 6.5 m Obstructed, concrete wall or steel electrical enclosure: Up to 3.5 m
Temperature	Operating: -10 °C to 50 °C Storage: -20 °C to 60 °C
Certifications	CSA, FCC, CE, IC
Warranty	Three years
Weight	80 g
Size (HxWxL)	3.2 cm x 7.6 cm x 6.4 cm (1.25 in x 3.0 in x 2.5 in)
Compatibility	Fluke 187, 189, 287, 289, 789

Ordering information

FLUKE-IR3000FC Fluke Connect ir3000 FC Connector

RF connection time (binding time) may take up to 1 minute.

Fluke 287 FlukeView® Forms Combo Kit

Technical Data

Now compatible with Fluke Connect™ Mobile App

Maximize productivity with the combined Fluke 287 and FlukeView® forms combo kit. Designed for today's professionals involved in the R&D, maintenance, manufacture and design of electronic circuits or systems. With built-in data logger and TrendCapture™ (the meters on screen graphical display) capability, the 287 helps you track down elusive, intermittent problems or monitor equipment with any of its functions. FlukeView Forms enables you to document, store, and analyze individual readings or series of measurements, overlay logged data to find cause and effect relationships, or turn your data into meaningful graphs and tables for a professional report. The 287 is compatible with the new Fluke ir3000 FC Infrared Connector, allowing you to share live measurements on your iOS or Android smart device with the Fluke Connect mobile app. The 287/FVF combo kit gives you a practical and affordable approach to documenting circuit design performance.

Fluke-287/FVF Kit includes:

- Fluke-287 True-rms Electronic Logging Multimeter with TrendCapture
- FlukeView Forms Software and cable
- 80BK-A Thermocouple Probe
- CAT III 1000 V 10 A Modular test leads (red, black)
- CAT II 1000 V 10 A Modular test probes (red, black) and caps
- CAT III 1000 V 10 A Alligator Clips (red, black)
- C280 Soft Case for meter protection and accessory storage
- Amp Jack Plug Set
- TPAK Magnetic Meter Hanger for Hands-free Operation
- Requires Fluke ir3000 FC Infrared Connector for Fluke Connect communication (not included with this kit)



Built with
**FLUKE
CONNECT™**

See it. Save it. Share it.
All the facts, right in the field.

Fluke Connect with ShareLive™ video call is the only wireless measurement system that lets you stay in contact with your entire team without leaving the field. The Fluke Connect mobile app is available for Android™ (4.3 and up) and iOS (4s and later) and works with over 20 different Fluke products—the largest suite of connected test tools in the world. And more are on the way. Go to the Fluke website to find out more.

Make the best decisions faster than ever before by viewing all temperature, mechanical, electrical and vibration measurements for each equipment asset in one place. Get started saving time and increasing your productivity.

Download the app at:



Smart phone not included with purchase.



287 functions/features

Multiple on screen displays	Yes
True-rms ac bandwidth	100 kHz
dBV/dBm	Yes
DC mV resolution	1 μ V
Megohm range	up to 500 M Ω
Conductance	50.00 nS
Continuity beeper	Yes
Temperature ($^{\circ}$ C and $^{\circ}$ F)	-200 $^{\circ}$ C to 1350 $^{\circ}$ C
Battery/fuse access	Yes/Yes
Elapse time clock	Yes
Time of day clock	Yes
Min-Max-Avg	Yes
Frequency	Yes
Duty cycle/pulse width	Yes
Info button on board help	Yes
Hold	Yes
Isolated optical interface	Yes
Auto/touch hold	Yes
Reading memory	Yes
Log to PC	Yes
On board logging with TrendCapture	Yes
Logging memory	up to 10,000 readings



Ordering information

**Fluke-287/FVF True-rms
Logging Multimeter Combo Kit
with TrendCapture**

Optional accessories
IR3000FC Fluke Connect
Infrared Connector

287 specifications

Function	Range and resolution	Basic accuracy
DC volts	50.000 mV, 500.00 mV, 5.0000 V, 50.000 V, 500.00 V, 1000.0 V	0.025 %
AC volts		0.4 % (true-rms)
DC current	500.00 μ A, 5000.0 μ A, 50.000 mA, 400.00 mA, 5.0000 A, 10.000 A	0.05 %
AC current		0.6 % (true-rms)
Temperature (excluding probe)	-200.0 $^{\circ}$ C to 1350.0 $^{\circ}$ C (-328.0 $^{\circ}$ F to 2462.0 $^{\circ}$ F)	1.0 %
Resistance	500.00 Ω , 5.0000 k Ω , 50.000 k Ω , 500.00 k Ω , 5.0000 M Ω , 50.00 M Ω , 500.0 M Ω	0.05 %
Capacitance	1.000 nF, 10.00 nF, 100.0 nF, 1.000 μ F, 10.00 μ F, 100.0 μ F, 1000 μ F, 10.00 mF, 100.00 mF	1.0 %
Frequency	99.999 Hz, 999.99 Hz, 9.9999 kHz, 99.999 kHz, 999.99 kHz	0.005 % + 1

RF connection time (binding time) may take up to 1 minute.

FLUKE®

**SEE IT.
SAVE IT.
SHARE IT.**

All the facts, right in the field.



**Introducing the Fluke Connect®
system of wireless test tools
and maintenance software.**

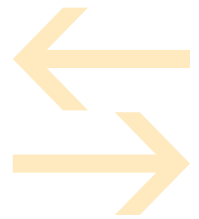
Not all models are available in all countries.
Consult your local Fluke Representative for more information.



INTRODUCING THE FLUKE SYSTEM OF WIRELESS TEST TOOLS.

The Fluke Connect® system of wireless test tools and maintenance software is the most comprehensive way to stay in contact with your team without leaving the field. Now confidently diagnosing and solving problems has never been easier.

Get started saving more time and increasing productivity now.



SHARE FROM ANYWHERE*.

Stay on the same page even when you and your team are in different places, only with ShareLive™ video call. Securely connect and collaborate with others, so they can see what you see.

Get approvals without leaving the field.



TROUBLESHOOT FASTER.

Instantly trend and monitor intermittent problems with TrendIt™ graphs so you can easily identify trends and stop problems before they happen. Seeing is believing—trend data over time and prove your point.

*Not all models are available in all countries. Consult your local Fluke Representative for more information.



SAVE TIME REPORTING.

Make better decisions faster than before. Measure once, and cut out the paper with AutoRecord™ measurements.

Make decisions quicker than before by viewing temperature, mechanical, electrical and vibration measurements from one location.



LOCK DOWN YOUR DATA.

The Fluke Connect® Cloud storage infrastructure has been built to be one of the most flexible and secure cloud computing environments available today.

Our cloud service provider uses state-of-the-art electronic surveillance, multi-factor access controls and 24/7 data center staffing to make Fluke Connect® Cloud one of the most flexible and secure cloud computing environments available.



Not all models are available in all countries. Consult your local Fluke Representative for more information.



Who will use Fluke Connect®?

Industrial maintenance, facility maintenance, commercial facility teams, and contractors are especially interested in using Fluke tools with the Fluke Connect app.



CUSTOMER TITLE:
Maintenance Manager

BENEFITS:
Reduce maintenance costs and increase uptime with accurate equipment records; eliminate time spent traveling between the field and the office and transcribing measurement data; improve team collaboration and increase productivity



CUSTOMER TITLE:
Maintenance Technicians

BENEFITS:
Allow different skill levels to collaborate more conveniently and remotely view measurements in energized cabinets for improved safety



Not all models are available in all countries.
Consult your local Fluke Representative for more information.