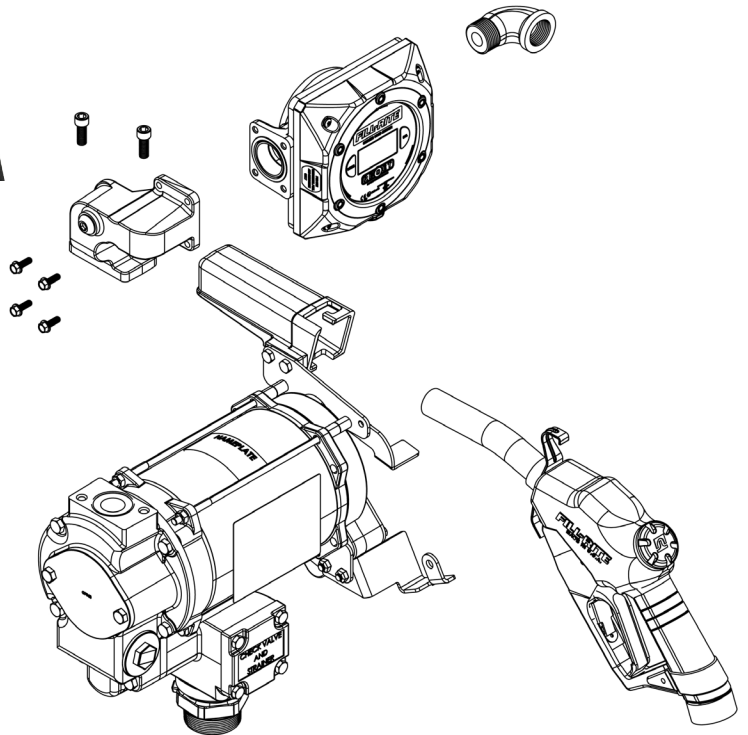
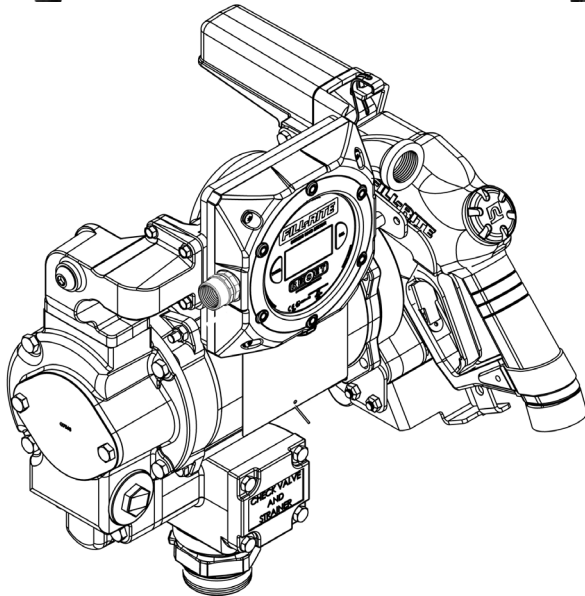


FILL-RITE®

The Most Trusted Name in Pumps and Meters

FR319VB

Technical Specifications



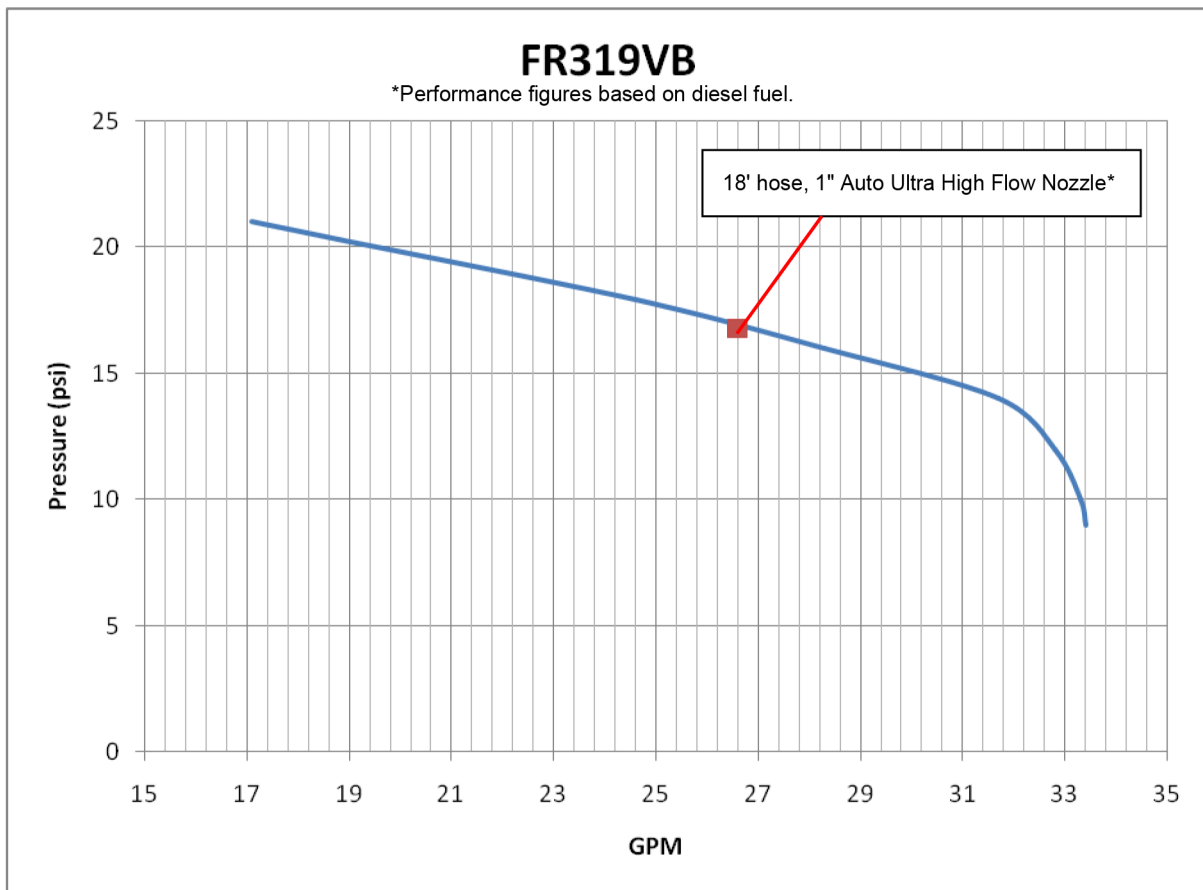
Pump	
Type - Rotary, Diaphragm, Gear, Vane	Vane
GPM in Supplied Configuration	26.6
GPM Open Flow - no Hose or Nozzle	33.4
By-Pass Pressure Rating (PSI) - Max	21 PSI
Dry Vac (in Hg)	12
Head - Max (Ft.)	N/A
Anti-Siphon Valve	Optional
Inlet - Size / Thread	1.25" NPT
Outlet - Size / Thread	1" NPT
Mount	Bung
Material - Pump Housing	Cast Iron
Material - Wetted Material	Fluorocarbon / Buna
Rotor Material	Bronze
Rotor Vane Material	Carbon
Compatible Fluids	Diesel, Gasoline, BioDiesel up to B20, E15, Kerosene
Max Viscosity of Fluids to Pump	22cSt
Strainer Mesh Size	.04"

Motor	
Power - AC 115,230, 115/230 VAC	115/230
HZ 50,60,50/60	50/60
Power - DC 12, 24, 12/24	N/A
HP (Horsepower) Rating	3/4 HP
Power Cord Length (feet)	N/A
Power Cord Gauge (AWG)	N/A
DC Power Cord Connectors	N/A
Amps (FLA)	9.8/4.9 11.4/5.7
RPM	1725/1425
Duty Cycle	30 min.
Thermal Protection Switch	Yes
Circuit Protection Fuse	None
Certification	UL, cUL



Excellence at work. Excellence in life.

PSI	GPM	Amp	Notes
9	33.4	9.01	
10	33.3	9.1	
12	32.8	9.22	
14	31.7	9.37	
16	28.3	9.47	
18	24.6	9.48	
20	18.8	9.46	
21	17.1	9.57	
21	0	9.13	Bypass
16	27.7	9.48	18' X 1" Manual Nozzle
16.5	26.6	9.47	18' X 1" Ultra High Flow Nozzle
17	27.5	9.5	20' X 1" Manual Nozzle
17.5	26.3	9.51	20' X 1" Ultra High Flow Nozzle



Changes in temperatures, fluid viscosity, and system accessories may shift the performance curves.

Performance figures based on diesel fuel.