

# EXTREME TOOLS®

*BUILT TO THE EXTREME*



# EXTREME TOOLS<sup>®</sup> INC.

## ABOUT US

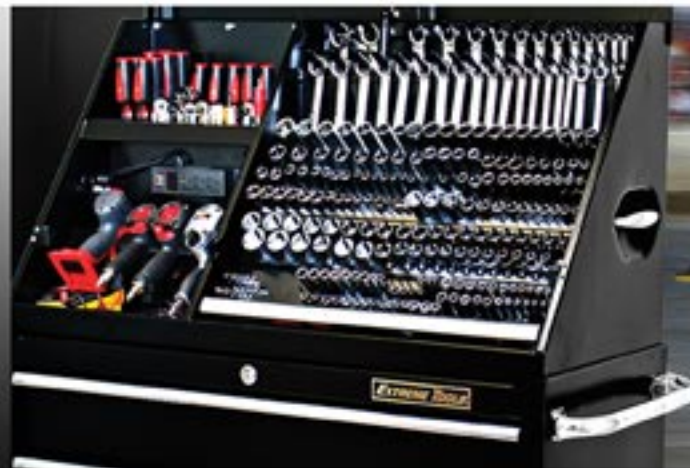
*Extreme Tools<sup>®</sup>, Inc. develops cutting-edge innovative designs in professional and portable tool storage. Our goal is to create and build the highest quality tool boxes at extremely competitive prices to make owning a tool box affordable for everyone from the mechanic to the farmer to the do-it-yourself weekend.*

*With more than 30 years of working knowledge and experience in the automotive industry, Extreme Tools<sup>®</sup>, Inc. has a proven track record as an innovator and leader in the professional tool storage market. That practical understanding has been the driving force that makes our patented designs so unique.*

*Extreme Tools<sup>®</sup>, Inc. provides a full line-up of products to suit a wide range of customers' needs. The EX Professional Series are distinctively designed and patented tool boxes that surpass our competition in quality, reliability and ingenuity. The TX and RX Series offer greater quality with specialized features at a more affordable price. While the PWS Series, the next generation in tool storage, makes transporting your tools convenient and easy.*

*Extreme Tools<sup>®</sup>, Inc. stands by our products. Our Professional Series comes with a Limited Lifetime Warranty. All other series come with a limited 5 year warranty with the exception of the TX Series Road Box and the accessories which have a limited 1 year warranty.*

*Contact us today for more information about Extreme Tools<sup>®</sup>, Inc. and our products.*



# TABLE OF CONTENTS

<b>EX SERIES</b>	<b>PROFESSIONAL</b>	<i>Extreme Tools® Professional Tool Box Series Exclusive Features</i>	<i>Page 4</i>
		<i>72" Professional 17 Drawer Triple Bank Roller Cabinet</i>	<i>Page 7</i>
		<i>72" Professional Extreme Power Workstation® Hutch &amp; 15 Drawer Top Chest</i>	<i>Page 7</i>
		<i>55" Professional 10 Drawer Top Chest &amp; Extreme Power Workstation® Hutch</i>	<i>Page 8</i>
		<i>55" Professional 11 Drawer Roller Cabinet</i>	<i>Page 8</i>
	<b>STANDARD</b>	<i>24" 4 Drawer &amp; 2 Shelf Side Cabinet</i>	<i>Page 9</i>
		<i>76" Professional 12 Drawer Roller Cabinet</i>	<i>Page 10</i>
		<i>32" Deluxe 4 Drawer Tool Cart with Top Lid / Drawer System</i>	<i>Page 11</i>
		<i>56" Standard 10 Drawer Top Chest &amp; 11 Drawer Roller Cabinet</i>	<i>Page 12</i>
		<i>16" Standard Side Cabinet &amp; 16" Side Box</i>	<i>Page 13</i>
<b>RX SERIES</b>	<i>41" Standard 8 Drawer Top Chest &amp; 11 Drawer Roller Cabinet</i>	<i>Page 14</i>	
	<i>72" Standard 18 Drawer Roller Cabinet</i>	<i>Page 15</i>	
	<i>26" Standard 7 Drawer Top Chest &amp; 5 Drawer Roller Cabinet</i>	<i>Page 15</i>	
	<i>31" Standard 6 Drawer Tool Cart</i>	<i>Page 27</i>	
	<i>72" 12 Drawer Top Chest &amp; 19 Drawer Roller Cabinet with Quick Release™ Drawer Pulls</i>	<i>Page 16</i>	
<b>PWS SERIES</b>	<i>19" 3 Drawer &amp; 3 Shelf Side Locker</i>	<i>Page 17</i>	
	<i>19" 7 Drawer Side Box</i>	<i>Page 17</i>	
	<i>55" 8 Drawer Top Chest &amp; 12 Drawer Roller Cabinet</i>	<i>Page 18</i>	
<b>TX SERIES</b>	<i>41" Deluxe Extreme Portable Workstation® &amp; 24" Deep Standard Roller Cabinet</i>	<i>Page 21</i>	
	<i>41" Extreme Portable Workstation® &amp; 11 Drawer Standard Roller Cabinet</i>	<i>Page 22</i>	
	<i>30" Deluxe Extreme Portable Workstation® &amp; 5 Drawer Standard Roller Cabinet</i>	<i>Page 23</i>	
		<i>36" Deluxe 5 Drawer Road Box</i>	<i>Page 25</i>
		<i>70" 7 Drawer / 2 Side Compartment Pit Box</i>	<i>Page 26</i>
		<i>Accessories</i>	<i>Page 27</i>



# **BUILT TO THE EXTREME®**

## **The Extreme Tools® EX Professional Series Tool Boxes**

- Exclusive, Patented Design
- Tool box frame is 11 gauge steel providing a stronger chassis which supports the use of upgraded professional casters
- Double steel wall drawer front gives greater strength and stiffness to each drawer (F)
- Drawer back panel constructed for rigidity to hold more weight without sagging or flexing
- Double channel spot-welded support brackets on bottom underside of each drawer reinforce and prevent sagging or warping
- Full extension drawers
- Medium and large drawers have exclusive double-slide system for improved stability (C)
- No spot welds on drawer fronts, hutch or side cabinet
- Locking security drawer keeps valuables safe (D)
- Drawer latch assembly has patented self-adjusting spring lever action (B) for increased security and smoother drawer action
- Drawer lock bar assembly uses single cylinder lock design for quick access (E)
- Modular drawer design allows drawer configuration to be rotated (A)
- Top Sub-Weldment keeps the top of the box rigid and stable
- Side cabinet mounting bracket attaches under roller cabinet & side cabinet for added support
- Rack mount power strip provides six AC power outlets with illuminated power switch (G)



Radio not included

# EXTREME TOOLS® EX PROFESSIONAL SERIES



EXTREME TOOLS® 72" EX PROFESSIONAL SERIES TOOL BOXES  
SHOWN WITH UPGRADED PROFESSIONAL SPRING-LOADED CASTERS

# 72" PROFESSIONAL SERIES

**TOP CHEST,  
ROLLER CABINET,  
AND  
SIDE CABINET**



*Shown above*  
**EX7217RCBL 17 Drawer Triple Bank Roller Cabinet**  
**EX7215SCHBL 15 Drawer Top Chest**  
**EX24045CBL 24" 4 Drawer & 2 Shelf Side Cabinet**  
**PROCASTER6 Optional Professional Spring-Loaded Casters**

## 72" 15 Drawer Professional Top Chest (1)

EX7215CHBK (black)

EX7215CHBL (blue)

- 72"W x 31"D x 26 1/4"H
- 15 full extension drawers use heavy-duty ball bearing slides
- 300- 600\* lbs. load rating per drawer (\*all deep drawers with double slides)
- Open till lid design uses 2 gas lifts to support lid
- Full-width, extruded, polished aluminum drawer pulls
- Premium drawer liners included
- Secure coded, tubular lock system
- Shipping weight: 790 lbs.

## 72" Professional Hutch (2)

with Extreme Power Workstation®

EX7201HCBK (black)

EX7201HCBL (blue)

- 72"W x 31"D x 26 3/8"H
- Built-in, high grade stainless steel work surface
- Fully assembled including hutch door - welded seams
- Stainless steel adjustable shelf includes built-in 6 outlet power strip and knockout for optional audio system
- Lockable hutch door uses heavy-duty roller bearing slides
- Steel peg board interior side walls for hanging tools
- Shipping weight: 490 lbs.

## 72" 17 Drawer Professional Roller Cabinet (3)

EX7217RCBK (black)

EX7217RCBL (blue)

- 72"W x 31"D x 46 3/4"H
- Triple bank roller cabinet utilizes heavy-duty 11 gauge steel frame
- Full extension drawers use heavy-duty ball bearing slides
- 300 - 600\* lbs. load rating per drawer (\*all deep drawers with double slides)
- Full width, extruded, polished aluminum drawer pulls
- High gloss AkzoNobel powder coat finish
- Locking security drawer keeps valuables safe while tool box is open
- High grade stainless steel work surface included
- (6) 6" x 2" casters load rated 950 lbs. each (4 locking swivel and 2 rigid)
- Secure coded, tubular locking system • Drawer liners included
- Shipping weight: 1,300 lbs.

# BUILT TO THE EXTREME®



72" PROFESSIONAL HUTCH  
(EX7201HCBL)

72" 17 DRAWER PROFESSIONAL ROLLER CABINET  
(EX7217RCBL)

Shown with standard casters



72" 15 DRAWER PROFESSIONAL TOP CHEST  
(EX7215CHBK) AND

72" 17 DRAWER PROFESSIONAL ROLLER CABINET  
(EX7217RCBK)

Shown with standard casters



DOUBLE STEEL WALL  
DRAWER FRONTS  
exclusively patented  
drawer design

72" 17 DRAWER PROFESSIONAL ROLLER CABINET  
(EX7217RC)  
shown with optional Spring-Loaded Casters (PROCASTER6)

# EXTREME TOOLS® 55" PROFESSIONAL SERIES

Same Patented Features as  
the 72" Professional Series



## 55" 11 Drawer Professional Roller Cabinet

EX5511RCBK (black)

EX5511RCBL (blue)

- 55"W x 31"D x 46 3/8"H
- (4) 6" x 2" Casters (2 locking swivel and 2 rigid)
- High grade stainless steel top included
- High gloss AkzoNobel powder coat finish
- Full extension drawers use heavy-duty ball bearing slides
- Drawers load rated 300-600\* lbs. rating per drawer (\*all deep drawers with double slides)
- Locking security drawer keeps valuables safe while tool box is open
- Full-width, extruded, polished aluminum drawer pulls
- Secure coded, tubular locking system
- Premium drawer liners included
- Shipping weight: 1,000 lbs.



## 55" 10 Drawer Professional Top Chest

EX5510CHBK (black)

EX5510CHBL (blue)

- 55"W x 31"D x 26 3/8"H
- 2 gas lifts to support top lid
- Heavy-duty steel construction
- Full extension drawers use heavy-duty ball bearing slides
- 300-600\* lbs. load rating per drawer (\*all deep drawers with double slides)
- Full-width, extruded, polished aluminum drawer pulls
- Secure, tubular coded lock system
- Premium drawer liners included
- Shipping weight: 600 lbs.



## 55" Professional Hutch

with Extreme Power Workstation®

EX5501HCBK (black)

EX5501HCBL (blue)

- 55"W x 31"D x 26 3/8" H
- Fully assembled including hutch door
- Built-in high grade stainless steel work surface
- Stainless steel adjustable shelf includes built-in 6 outlet power strip
- Full width, extruded, polished aluminum door pull
- Secure coded, tubular lock and keys
- Steel peg board interior side walls
- Shipping weight: 390 lbs.



# BUILT TO THE EXTREME®

## 55" EX Professional Series Combination

**ROLLER CABINET,  
TOP CHEST,  
SIDE CABINET,  
WITH  
OPTIONAL  
SPRING-LOADED CASTERS**



### Optional EX Professional Spring-Loaded Casters

Load rated 1,250 lbs. per shock absorbing caster

#### **PROCASTER6 Set of 6 Casters**

(4 locking swivel and 2 rigid)

#### **PROCASTER4 Set of 4 Casters**

(2 locking swivel and 2 rigid)



## ADD-ON STORAGE

### 24" Professional 4 Drawer, 2 Shelf Side Cabinet

**EX2404SCBK** (black)

**EX2404SCBL** (blue)

- 24"W x 31"D x 63 1/2"H
- 2 adjustable shelves have ball bearing slides
- 4 drawers use ball bearing slides load rated 300 lbs. per drawer
- Cabinet and door can be rotated to fit right or left side
- Sturdy, steel support plate bolts under both side and roller cabinets
- Coded tubular lock can be keyed to match tool box lock
- Premium drawer liners included
- Shipping weight: 475 lbs.

# EXTREME TOOLS® 76" PROFESSIONAL SERIES

## 76"

### 12 DRAWER

### PROFESSIONAL ROLLER CABINET

**EX7612RCBK** (black)

**EX7612RCBL** (blue)

- 76"W x 31"D x 47"H
- 11 gauge heavy-duty steel frame
- (6) 6" x 2" heavy-duty spring-loaded casters (B)  
(4 locking swivel and 2 rigid)
- 12 full extension drawers (C)
  - 2 extra wide drawers and 1 extra deep drawer
  - 1 Vertical Power Tool Drawer (A)
    - 20"W x 28 1/2"D x 32"H
    - 2 heavy-duty adjustable shelves
    - 4 outlet powerstrip (D)
    - Steel Peg Board for hanging tools
- Ball bearing slides load rated 300 - 600\* lbs. per drawer  
(\*Vertical drawer and deep drawers with double slides)
- Double steel wall drawer fronts provide extra strength and stability - no warping, twisting or sagging
- Double channel spot welded support brackets on underside of drawers make them even stronger
- High gloss AkzoNobel powder coat finish resists scratches and stains
- Durable high grade stainless steel work surface
- Two high gloss powder coated steel and chrome handles
- Shipping weight: 1,200 lbs.



TOOLS  
IN  
PHOTOS  
NOT  
INCLUDED



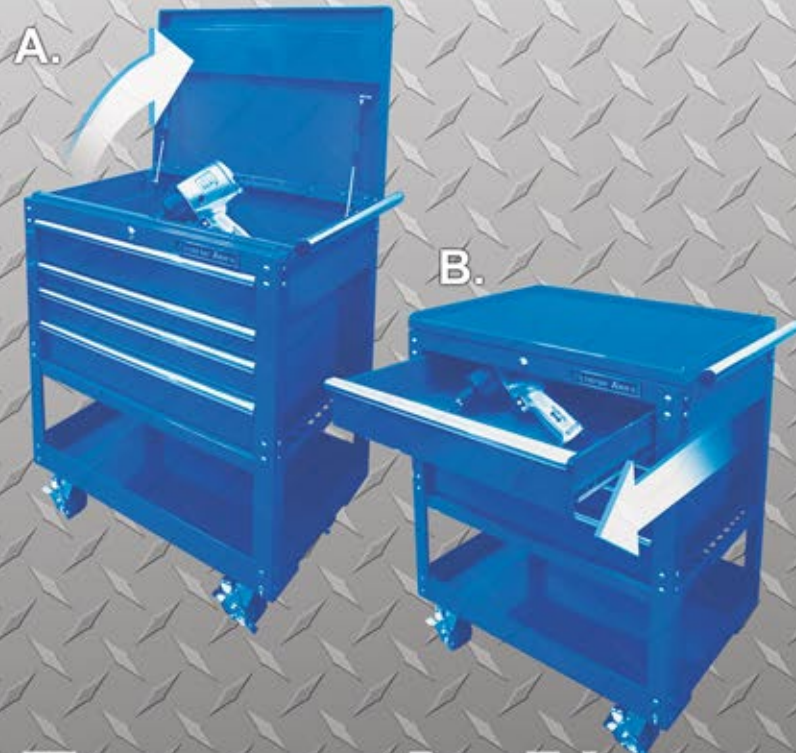
**BUILT TO THE EXTREME®**

**32"**

## **DELUXE 4 DRAWER TOOL CART**

**EX3204TCBK** (black) • **EX3204TCBL** (blue) • **EX3204TCRD** (red)

- 32½"W x 22"D x 41½"H
- Access top drawer storage compartment whether in open or closed position
- Ball bearing slides load rated 100 lbs. per drawer • 4 large drawers plus bottom tray
- Heavy-duty 14 & 18 gauge steel construction • High gloss powder coat finish
- 2 gas struts hold up lid • Pry bar holders lock tools inside tool cart • PVC drawer liners
- Secure tubular lock and keys • (4) 5" x 2" Deluxe locking swivel casters
- Full-width polished stainless steel handle • Shipping weight: 240 lbs.



### **ENGINEER'S NOTES: DUAL ACCESS COMPARTMENT**

To access tools in the top compartment, lift the lid of the Extreme Tools® Deluxe Tool Cart (A).

### **The Extreme Tools® Difference**

When the lid is closed or in use, the same tools can be retrieved by opening the top drawer (B). The top compartment is accessible by opening the lid or the top drawer. No other cart has this feature.

Extreme Tools® engineered this unique, design so your tools would always be accessible in any situation.

# 56"

## STANDARD TOP CHEST AND ROLLER CABINET

### 56" 10 Drawer Standard Top Chest (1)

**EX5610CHBK** (black)

**EX5610CHBL** (blue)

- 55 1/2"W x 19 3/4"D x 20 1/2"H
- 2 gas lifts to support the top lid
- Heavy steel construction
- Drawers use heavy-duty ball bearing slides
- 100 lbs. load rating per drawer
- Full width, extruded, polished aluminum drawer pulls
- EVA foam drawer liners included
- Coded tubular lock & key system
- Shipping weight: 270 lbs.

### 56" 11 Drawer Standard Roller Cabinet (2)

**EX5611RCBK** (black)

**EX5611RCBL** (blue)

- 56"W x 20"D x 41"H
- Drawers use heavy-duty ball bearing slides
- 100-200\* lbs. load rating per drawer  
(\*deep drawers with double slides)
- (6) 5" x 2" casters  
(4 locking swivel and 2 rigid)
- Handle included fits either end
- High gloss powder coat finish
- EVA foam drawer liners included
- Coded tubular lock & key system
- Shipping weight: 400 lbs.



56" EX STANDARD SERIES  
ROLLER CABINET (EX5611RCBK)  
AND TOP CHEST (EX5610CHBK)



### Optional 56" Stainless Steel Work Surface shown on EX5611RC - Left

**EX5600ST**

304 Grade 18 gauge stainless Steel Work Surface

**BUILT TO THE EXTREME®**



56" EX STANDARD SERIES ROLLER CABINET (EX5611RCBL)  
WITH STANDARD TOP CHEST (EX5610CHBL)  
SIDE CABINET (EX1603SCBL) - Right  
SIDE BOX (EX1606SBBL) - Left

1

2



## **ADD-ON STORAGE**

### **FOR EX STANDARD SERIES**

#### **16" Standard 3 Drawer Side Cabinet (1)**

EX1603SCBK (black) EX1603SCBL (blue)

- 15 1/4" W x 18" D x 54 3/4" H • 3 drawers & 2 shelves
- High gloss powder coat finish
- Polished aluminum drawer pulls and side trim
- Drawers use heavy-duty ball bearing slides
- Ball bearing slides load rated 100 lbs. per drawer
- EVA drawer liners • Tubular lock and key
- Shipping weight: 135 lbs.

#### **16" Standard 6 Drawer Side Box (2)**

EX1606SBBK (black) EX1606SBBL (blue)

- 15 3/4" W x 18" D x 34 3/4" H • 6 drawers
- High gloss powder coat finish
- Polished aluminum drawer pulls and side trim
- Drawers use heavy-duty ball bearing slides
- Ball bearing slides load rated 100 lbs. per drawer
- EVA drawer liners • Tubular lock and key
- Shipping weight: 115 lbs.

# 41"

## **EX Standard Series Top Chest and Roller Cabinet**

### **41" 8 DRAWER TOP CHEST**

**EX4108CHBK** (black)

**EX4108CHBL** (blue)

- 41"W x 17 3/4"D x 21 3/8"H
- 2 gas lifts to support the top lid
- Includes 1 extra deep drawer
- Drawers use heavy-duty ball bearing slides
- 100-200\* lbs. rating per drawer (\*drawers with double slides)
- EVA drawer liners included
- Shipping weight: 200 lbs.

### **41" 11 DRAWER ROLLER CABINET**

**EX4111RCBK** (black)

**EX4111RCBL** (blue)

- 41 1/2"W x 18"D x 40 1/2"H
- (4) 5" x 2" casters (2 locking swivel and 2 rigid)
- Drawers use heavy-duty ball bearing slides
- 100-200\* lbs. rating per drawer (\*drawers with double slides)
- EVA drawer liners included
- High gloss powder coat finish
- Secure coded tubular lock system
- Shipping weight: 300 lbs.



EX 41" 11 DRAWER STANDARD ROLLER CABINET (EX4111RCBL) WITH 41" 8 DRAWER STANDARD TOP CHEST (EX4108CHBL), 16" 3 DRAWER SIDE CABINET (EX1603SCBL) - Right AND 16" 6 DRAWER SIDE BOX (EX1606SBBL) - Left

# 72"

## **EX Standard Series 18 Drawer Roller Cabinet**

**EX7218RCBK** (black) **EX7218RCBL** (blue)

- 72"W x 30"D x 45 1/8"H • (6) 6" x 2" casters
- High gloss powder coat finish
- Full extension drawers use heavy-duty ball bearing slides
- 250-500\* lbs. load rating per drawer (\*bottom deep drawer with double slides)
- EVA foam drawer liners included • Stainless steel top included
- 1 specialty drawer (extra wide and extra deep)
- Handle included fits either end • Shipping weight: 1,100 lbs.
- **NOTE:** NO Top chest, hutch or side cabinet available for this model



26" TOOL BOX SERIES



### **26" 7 DRAWER TOP CHEST**

**EX2607CHBK** (black) **EX2607CHRD** (red)

- 26"W x 16"D x 18"H • Heavy steel construction
- Drawers use ball bearing slides • Tubular lock & keys
- 75 lbs. load rating per drawer
- Shipping weight: 120 lbs.

### **26" 5 DRAWER ROLLER CABINET**

**EX2605RCBK** (black) **EX2605RCRD** (red)

- 26 1/2"W x 18"D x 27"H
- (4) 5"x2" casters (2 locking swivel and 2 rigid)
- High gloss powder coat finish
- Drawers use ball bearing slides
- 75 lbs. load rating per drawer
- Shipping weight: 175 lbs.

# 72" RX Series



72" RX Series in blue shown left:  
RX722519RCBL  
Roller Cabinet  
RX722512CHBL  
Top Chest  
RX192503SLBL  
Side Locker - Left  
RX192507SBBL  
Side Box - Right



## ***Patented Quick Release™ Self-Latching Drawer Pull See & Feel the Difference!***

***Quick Release™ drawer pulls were engineered to have the professional look and performance that you expect from Extreme Tools®.***

***Full width, polished handles are made from solid, extruded aluminum and attach across the drawer - not just at the ends - providing a stronger, sturdier, more secure drawer pull.***



## 72" 12 Drawer Top Chest

**RX722512CHBK** (black) • **RX722512CHBL** (blue)

72"W x 25"D x 22¼"H

- Full-width polished, solid aluminum drawer pulls with self-latching, Quick Release™ handles
- Drawers use full-extension ball bearing slides
- Load capacity: 100-200\* lbs. per drawer
  - \*Deep drawers with double slides
- Two gas struts support lid
- Full-width polished, solid aluminum lid handle
- High gloss powder coat finish
- Premium PVC drawer liners included
- Tubular coded lock and keys
- Shipping Weight: 410 lbs

## 72" 19 Drawer Roller Cabinet

**RX722519RCBK** (black) • **RX722519RCBL** (blue)

72"W x 25"D x 47"H

- Features Expanded Drawer Width Design:
  - 3 extra long drawers
- Full-width polished, solid aluminum drawer pulls with self-latching, Quick Release™ handles
- Added internal support bar under extra long drawers gives strength & rigidity to prevent warping or twisting drawers
- Drawers use full-extension ball bearing slides
- Load capacity: 100-200\* lbs. per drawer
  - \*Deep drawers with double slides
- Industrial strength 12 gauge steel frame
- (6) 6" x 2" casters (4 lockable swivels, 2 rigid)
- High gloss powder coat finish
- Premium PVC drawer liners included
- Tubular coded lock and keys
- Shipping Weight: 690 lbs

### **RX7225ST Optional 72" Stainless Steel Work Surface**

72"W x 25"D x 1"H 304 Grade 19 Gauge Stainless Steel



**RX192503SLBK** (black)

**RX192503SLBL** (blue)

### **19" 3 DRAWER & 3 SHELF SIDE LOCKER (1)**

- 19"W x 25"D x 61"H
- 3 Full-extension drawers, 2 Adjustable & 1 fixed shelves
- Drawers use ball bearing slides load rated 100 lbs per drawer
- High gloss powder coat finish
- Full height polished aluminum door pull

**RX192507SBBK** (black)

**RX192507SBBL** (blue)

### **19" 7 DRAWER SIDE BOX (2)**

- 19"W x 25"D x 39¼"H
- 7 Full-extension drawers - 2 deep, 1 extra deep
- Full-width polished aluminum drawer pulls
- Drawers use ball bearing slides
- Drawers load rated 100 - 200\* lbs. per drawer
  - (\*drawers with double sets of slides)

**19"**  
**SIDE LOCKER**  
**AND**  
**SIDE BOX**



# 55"

## **RX SERIES TOP CHEST & ROLLER CABINET**

### **55" 8 DRAWER TOP CHEST**

**RX552508CHBK (black)**

**RX552508CHBL (blue)**

- 54 5/8"W x 25"D x 22 1/4"H
- Patented self-latching, Quick Release™ drawer pulls
- Drawer pulls are full-width polished, solid aluminum
- Large open till area under lid · 2 gas struts support lid
- Drawers use full-extension ball bearing slides
- Load capacity: 100-200\* lbs. per drawer  
\*Drawers with double slides
- High gloss powder coat finish · PVC drawer liners included
- Shipping weight: 270 lbs.

### **55" 12 DRAWER ROLLER CABINET**

**RX552512RCBK (black) RX552512RCBL (blue)**

- 55"W x 25"D x 46"H
- Features Expanded Drawer Width Design:  
3 extra long, full-width drawers
- Internal support bar under long drawers gives extra strength & rigidity  
so drawers will not warp or twist
- Patented self-latching, Quick Release™ drawer pulls
- Drawer pulls made from full-width polished, solid aluminum
- Full-extension ball bearing slides load rated 100-200\* lbs. per drawer  
\*Deep drawers with double slides
- Heavy duty steel drawers
- Professional strength 14 gauge steel frame supports fully loaded box
- High gloss powder coat finish
- Drawer liners included · Secure, tubular coded lock & keys
- (6) 5" x 2" casters (4 lockable swivel, 2 rigid)
- Shipping Weight: 500 lbs



*Patented Quick Release™  
drawer pull design  
lets you use one hand  
to lift & release the latches  
holding the drawer closed  
with one quick motion.  
Self-latching system  
keeps drawers closed  
when moving.*

### **RX5525ST Optional 55" Stainless Steel Work Surface**

55"H x 25"D x 1"H  
304 Grade 19 gauge stainless steel

## **55" RX Series**

*Top Chest  
Roller Cabinet  
Side Locker &  
Side Box*



*55" Series in black Shown above:  
RX552512RCBK 12 Drawer Roller Cabinet, RX552508CHBK 8 Drawer Top Chest  
RX192503SLBK 3 Drawer & 3 Shelf Side Locker - Left  
RX192507SBBK 7 Drawer Side Box - Right*

**PWS SERIES**

**41" DELUXE  
EXTREME PORTABLE  
WORKSTATION®  
AND  
ROLLER CABINET**



TOOLS IN  
PHOTO NOT  
INCLUDED

# 41"

## DELUXE EXTREME PORTABLE WORKSTATION\*

**PWS4105TXBK** (black) **PWS4105TXRD** (red)

- 41 1/2"W x 23 5/8"D x 23 1/4"H
- 16-gauge steel construction with welded seams
- Power tool rack with built-in power strip
- Pull-out side shelf offers convenient work surface
- Pull-out side drawer holds up to 17" laptop
  - Built-in power strip
  - Interior release lever secures drawer when lid is locked
- Store and organize your hand tools:
  - (23) Combination wrench pegs
  - (49) Screwdriver/ratchet driver and extension holders
  - (48) 1/4" Deep and shallow socket pegs
  - (32) 3/8" Deep and shallow metric socket pegs
  - (22) 3/8" Deep and shallow SAE socket pegs
  - (32) 1/2" Deep and shallow socket pegs
  - (13) Wide specialty tool pegs
  - (29) Piece drill bit holder
  - (6) Slot pliers rack
- 2 Drawers with storage trays built into drawer fronts
  - One large 25 3/4" wide drawer
  - One extra large, full width 38" drawer
- All drawers and side shelf use ball bearing slides load rated 100 lbs. per each
- Lockable lid secures tools in place when closed
- Dual gas struts raise and securely hold lid in place
- Weather stripping on interior of lid
- Weather-resistant, powder coat textured finish and lock
- Shipping weight: 250 lbs.

## 41" 11 DRAWER 24" DEEP ROLLER CABINET

**PWS4124RCTXBK** (black) **PWS4124RCTXRD** (red)

- 41"W x 24"D x 41 1/2"H
- (4) 5" x 2" casters (2 locking swivel and 2 rigid)
- Self-latching drawer pulls keep drawers secure when moving
- Drawers use ball bearing slides load rated 100-200\* lbs. per drawer (\*deep drawers with double slides)
- Full width polished aluminum drawer pulls
- EVA foam drawer liners included
- Secure tubular lock and keys
- Weather-resistant, powder coat textured finish
- Shipping weight: 375 lbs.



TOOLS IN PHOTOS NOT INCLUDED

# 41"

## **EXTREME PORTABLE WORKSTATION® AND ROLLER CABINET**

### **41" EXTREME PORTABLE WORKSTATION®**

**PWS4100TXBK (black)**

**PWS4100TXRD (red)**

- 41"W x 17 3/8"D x 21 1/2"H
- 16-gauge steel construction with welded seams
- Power tool rack with built-in power strip and 2 USB ports
- Organize and easily find tools:
  - 17 SAE combination wrench slots
  - 22 Metric combination wrench slots
  - Screwdriver/nut driver slots
  - (64) 1/4" Deep and shallow socket pegs
  - (66) 3/8" Deep socket pegs
  - (28) 3/8" Shallow socket pegs
  - (64) 1/2" Deep and shallow socket pegs
  - 47 Screwdriver/ratchet driver and extension holders
- Socket tray lifts to access more tool storage underneath
- Lockable lid secures tools in place when closed
- Gas spring raises lid
- Weather stripping creates tight seal against dust/moisture
- Weather-resistant, powder coat textured finish and lock
- Shipping weight: 140 lbs.

### **EXTREME 41" 11 DRAWER ROLLER CABINET**

**PWS4111RCTXBK (black)**

**PWS4111RCTXRD (red)**

- 41"W x 18"D x 41 1/2"H
- (4) 5" x 2" casters (2 locking swivel and 2 rigid)
- Self-latching drawer pulls keep drawers secure when moving
- Drawers use ball bearing slides
- Drawers load rated 100 – 200\* lbs. per drawer  
(\*rating for double sets of slides)
- EVA foam drawer liners included
- Secure tubular lock and keys
- Weather-resistant, powder coat textured finish
- Shipping weight: 300 lbs.



# 30"

## **Deluxe EXTREME PORTABLE WORKSTATION® AND ROLLER CABINET**

### **30" DELUXE EXTREME PORTABLE WORKSTATION® PWS302000TXBK (black)**

- 30 $\frac{3}{4}$ "W x 20"D x 20 $\frac{1}{2}$ "H
- 16-gauge steel construction with welded seams
- Power tool rack with built-in power strip and 2 USB ports
- Holds and organizes a variety of tools:
  - 35 SAE combination wrench slots
  - 48 Screwdriver / nut driver slots
  - 186 Deep and shallow SAE/metric socket pegs
  - Under socket panel
    - Shelf for smaller tools (tape measure, pliers etc.)
    - Power Tool Rack with power strip and 2 USB ports
    - Additional storage space (drill, hammers, etc.)
- Lockable lid secures tools in place when closed
- Gas strut raises lid when unlatched for easy access
- Heavy-duty side handles make moving easy
- Weather-resistant, powder coat textured finish and lock
- Weather stripping creates tight seal against dust / moisture
- Shipping weight: 125 lbs.

### **EXTREME 30" 5 DRAWER ROLLER CABINET PWS302005RCTXBK (black)**

- 30 $\frac{3}{4}$ "W x 20 $\frac{1}{2}$ "D x 41"H
- (4) 5" x 2" casters (2 locking swivel and 2 rigid)
- Caster capacity rated 550 lbs. each
- Self-latching drawer pulls keep drawers secure when moving
- Drawers use ball bearing slides
- Drawers load rated 100 – 200\* lbs. per drawer  
(\*drawers with double sets of slides)
- Drawer liners included
- Tubular lock and keys
- Weather-resistant, powder coat textured finish
- Shipping weight: 190 lbs.



TOOLS IN  
PHOTO NOT  
INCLUDED



# EXTREME TOOLS



# 36"

## **DELUXE 5 DRAWER ROAD BOX** **WITH REINFORCED DRAWERS** **AND INDUSTRIAL STRENGTH HANDLES**

### **TX362505RBBK**

- 36" W x 25¼" D x 28¼" H
- Heavy-duty 16/18 gauge steel construction with patented design providing extra support
- Engineered to accommodate standard material handling methods and equipment
- Durable powder coat textured finish suitable for outdoor use
- 5 Reinforced drawers use friction slides
- Drawers load rated 150 lbs. per drawer
- Lid folds back to reveal additional storage
- 2 Gas struts hold lid in place
- Drop front lid securely locks over drawers
- Caster-ready (casters sold separately)
- Tubular coded lock and key system
- Drawer liners included
- Shipping Weight: 290 lbs.

*Open Road Box  
Shown with  
Optional Caster*



### **Optional Caster Set for TX362505RBBK** **Z-CASW52**

Set of Four 5" x 2" Swivel Casters

**TX**  
**SERIES**





## **70" Pit Box with 7 Drawers and 2 Side Compartments**

**TXPIT7009BK** (black)

**TXPIT7009BL** (blue)

**TXPIT7009RD** (red)

- Overall Dimensions: 87 ½" W x 31" D x 47 ½" H
- Tool Box Dimensions: 70 ¾" W x 24 ¼" D x 39 ½" H
- 7 Drawers including 1 extra deep drawer
- 2 Large storage compartments with adjustable shelves
- High 304 grade stainless steel work surface
- Sturdy, heavy-duty steel frame
- Powder coat finish resists scratches
- Self-latching drawer handles keep drawers closed when moving

- Full extension ball bearing drawer slides
- Drawers load rated 100-200\* lbs. per drawer (\*drawers with double slides)
- 4 Heavy-duty pneumatic tires provide a smooth ride
- T-shaped handle for easy maneuvering
- Brake controls built into handle
- Disc brake locks wheels in place even when fully loaded
- Secure coded tubular lock and keys
- EVA foam drawer liners included
- Shipping Weight: 840 lbs.



Slots and holders on both sides of the tool cart accommodate hanging tools such as extensions and pry bars. Tools are securely locked inside the lid.



## 31" 6 Drawer Tool Cart

**EX3106TCRD (red)**

- 30.5"W x 21"D x 39.5"H (not including handle)
- 6 Full-width drawers – 1 deep drawer
- Deep storage area under lid for big tools
- Four 5" x 2" locking swivel casters
- Drawers use ball bearing slides
- Drawers load rated 75 lbs per drawer
- Drawer liners included
- Full-width aluminum drawer pulls
- Secure, tubular coded lock & keys
- Powder coat finish
- Fully assembled cart - casters must be installed
- Shipping weight: 190 lbs.

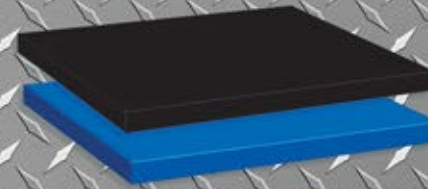
# ACCESSORIES



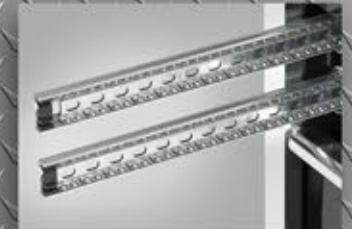
**EXPTRSL  
POWER TOOL RACK**  
Available in silver  
Power Tools not included



**EXTCOSL  
TOOL & CAN ORGANIZER**  
Available in silver  
Tools not included



**SHELVES**  
available in black  
and blue



**DRAWER SLIDES**



**EX PROFESSIONAL CASTER  
UPGRADE**



**REPLACEMENT KEYS**