

# Beveling machine

# B60S



## Technical data

	Metric	Imperial
Spindle speed	1675 - 2850 rpm	
Max. bevel depth	24 mm (45°)	15/16" (45°)
Bevel angle	0 - 60°	
Pipe diameter	150 - 600 mm	5 15/16" - 23 5/8"
Length	415 mm	16 5/16"
Width	375 mm	14 3/4"
Height	268 mm	10 9/16"
Weight	24,1 kg	53.1 lbs
Motor power	1800 W	16.4 A
Voltage	110 - 120 V AC / 60 Hz 220 - 240 V AC / 50 - 60 Hz	

## Features:



Adjustable  
speed



Overload  
protection



Depth:  
24 mm / 15/16"  
(45°) max.

## Benefits:

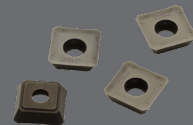
- Powerful high efficiency motor;
- Clear indicator for angle-setting, up to 60°;
- Suitable for both plate and pipe material up to 600 mm (23 5/8");
- Extremely suitable for stainless steel;
- Wide and soft handles.



Stainless Steel  
guide plate assembly  
Code: B60.1020S



Milling head  
Code: B60.0027



Cutting plates, 10-pieces  
Code: LKS.15

**EUROBOOR**  
FOR PROFESSIONALS BY PROFESSIONALS

Find out more about specialty power tools we have.