

# Dynabug<sup>®</sup>

## Model "T" Sander

**Safety, Operation and Maintenance – Save This Document and Educate All Personnel**

Model	Pad Size	Pad Type
57920	4" x 4-5/16" (w/ Clips)	Vinyl-Face
57922	5" Diameter (Round)	Vinyl-Face
57923	4-1/4" x 4-1/2"	Hook-Face
57924	5" Diameter (Round)	Hook-Face
57925	4-1/4" x 4-1/2"	Hook-Face
57926	6" Diameter (Round)	Vinyl-Face
57927	6" Diameter (Round)	Hook-Face



Model 57920



### **⚠ WARNING**

Read and understand this tool manual before operating your air tool. Follow all safety rules for the protection of operating personnel as well as adjacent areas. Always operate, inspect and maintain this tool in accordance with the American National Standards Institute (ANSI). Safety Requirements for the Use, Care and Protection of Abrasive Wheels – ANSI B7.1, Compressed Air and Gas Institute (CAGI) Safety Code for Portable Air Tools – B186.1, Code of Federal Regulation – CFR 29 Part 1910, International Organization for Standardization (ISO) Hand Held Non-Electric Power Tools – ISO 11148, Safety Requirements and applicable State and Local Regulations.



Read and understand tool manual before work starts to reduce risk of injury to operator, visitors, and tool.



Eye protection must be worn at all times, eye protection to conform to ANSI Z87.1.



Ear protection to be worn when exposure to sound, exceeds the limits of applicable Federal, State or local statutes, ordinances and/or regulations.



Practice safety requirements. Work alert, have proper attire, and do not operate tools under the influence of alcohol or drugs.



Respiratory protection to be used when exposed to contaminants that exceed the applicable threshold limit values required by law.



Air line hazard, pressurized supply lines and flexible hoses can cause serious injury. Do not use damaged, frayed or deteriorated air hoses and fittings.

Some dust created by sanding, grinding, drilling, and other construction activities contain chemicals known to cause cancer, birth defects or other reproductive harm. Some examples of these chemicals are:

- Lead from lead-based paints
- Crystalline silica from bricks and cement and other masonry products
- Arsenic and chromium from chemically treated lumber

Your risk from these exposures varies, depending on how often you do this type of work. To reduce your exposure to these chemicals: work in a well ventilated area, and work with approved safety equipment, such as those dust masks that are specially designed to filter out microscopic particles.

### **SAFETY INSTRUCTIONS**



Carefully Read and Understand the General and Sander/Polisher sections found in Tool Safety and Operating Guidelines (PN00001676) Before Handling or Using Tool.

Carefully Read all instructions before operating or servicing any Dynabrade<sup>®</sup> Abrasive Power Tool. Products offered by Dynabrade are not to be modified, converted or otherwise altered from the original design.

**Tool Intent:** Dynabug<sup>®</sup> Model "T" Sanders are ideal for defuzzing wood and sealer sanding.

**DO NOT USE Tool for Anything Other Than Its Intended Applications.**

**Training:** Proper care, maintenance, and storage of your air tool will maximize tools performance and reduce chance for accident.

**Employer's Responsibility:** Provide operators with safety instructions and training for safe use of tools and accessories.

**Report to Your Supervisor any Condition of the Tool, Accessories or Operation you Consider Unsafe.**

# MAINTENANCE INSTRUCTIONS

**Important:** To keep tool safe, a Preventative Maintenance Program is recommended. The program should include inspection of the tool and all related accessories and consumables, including air lines, pressure regulators, filters, oilers, etc. (refer to CAGI B186.1 for additional maintenance information). If accessory or tool breakage occurs, investigate failure to determine the cause and correct before issuing tool for work. Use the following schedule as a starting point in developing a Preventative Maintenance Program. If tool does not operate properly (RPM, vibration, start/stop) after these scheduled checks or at any time, the tool must be repaired and corrected before returning tool to use.

## INSTALLATION

- To ensure long life and dependable service, use a Closed Loop Air System and Filter-Regulator-Lubricator (FRL) as diagramed below.
- Each tool should have its own dedicated hose connected to an air supply FRL. Quick disconnects should be installed at the FRL in an effort to reduce contamination into the tool. Securely affix all fittings and hose assemblies.
- It is strongly recommended that all Dynabrade rotary vane air tools be used with a Filter-Regulator-Lubricator to minimize the possibility of misuse due to unclean air, wet air or insufficient lubrication. Dynabrade recommends the following: **10690** Air Line Filter-Regulator-Lubricator — Provides accurate air pressure regulation, two-stage filtration of water contaminants and micro-mist lubrication of pneumatic components.
- Dynabrade recommends 1 drop of air lube per minute for each 20 SCFM (example: if the tool specification states 40 SCFM, set the drip rate on the filter-lubricator to 2 drops per minute). **95842** Dynabrade Air Lube is recommended.

## MAINTENANCE SCHEDULE

Maintenance schedules depend on the type and style of tool. Refer to page 3 to reference symbols associated with specific maintenance items/areas. Match maintenance schedules accordingly. See page 4 for any additional maintenance information.

**Note:** Turbine style air motors do not require oil.

### Daily (every 8 hours):

- Inspect tool and accessories for damage or broken parts. Replace items as necessary to ensure proper operation and safety.
- O** Lubricate motor as recommended. Use **95842** Dynabrade Air Lube (10W/NR). Apply 1 drop/minute of air lube per 20 SCFM.
- Check air line pressure with a gage. (MAX. 90 PSIG or 6.2 Bar operating pressure at the air inlet of the tool.)
- W** Lubricate wick system and right angle gears through gear case fitting. Apply 3 plunges of **95848** Gear Oil. Use **95541** Lubricant Gun (Prime lubricant gun before use).
- Check tool for proper operation: If operating improperly or demonstrates unusual vibration, the tool must be serviced and problem corrected before further use.

### Every 20 Hours/Once a Week (which ever comes first):

- G** For tools without "wick system", lubricate right angle gears through lubricant fitting. Apply 1 plunge of **95544** Grease. Use **95541** Lubricant Gun. (Prime lubricant gun before use).
- Measure RPM (speed) by setting air pressure to 90 PSIG (6.2 Bar) at tool inlet, without accessory mounted, while the tool is running. Using

tachometer, check spindle speed of the tool. Unless otherwise stated the no-load speed may not exceed the rated speed. If tool speed exceeds maximum rated RPM, service as required and correct before use.

- If tool is running too fast: look for worn, damaged or missing governor, air control rings and silencer(s). Service as required.
- If tool is running too slow: look for malfunctioning governor, clogged inlet screen, silencer(s) or air stream. Service as required.

**Note:** Special care must be taken when servicing governors. Refer to specific tool manual for governor instructions and/or speed control devices. Governor assemblies made from molded plastic components are non-serviceable and must be replaced.

### Every 50 Hours:

- G** Lubricate planetary gears through gear case fitting with 3 plunges of **95544** Grease. Use **95541** Lubricant Gun. (Prime lubricant gun before use).

## REPAIR

- Use only genuine Dynabrade replacement parts to ensure quality. To order replacement parts, specify Model#, Serial# and RPM of your air tool.
- Mineral spirits are recommended when cleaning the tool and parts. Do not clean tool or parts with any solvents or oils containing acids, esters, ketones, chlorinated hydrocarbons or nitro carbons.
- A Motor Tune-Up Kit is available which includes high wear and medium wear motor parts.
- Air tool markings must be kept legible at all times, if not, reorder housing and replace. User is responsible for maintaining specification information.

- O** After maintenance is performed on tool, add a few drops of **95842** Dynabrade Air Lube to the tool inlet and start the tool a few times to lubricate air motor. Verify RPM (per 20 hr maintenance schedule), vibration and operation.

## HANDLING & STORAGE

- Use of tool rests, hangers and/or balancers is recommended.
- Protect tool inlet from debris (see Notice below).
- Do Not** carry tool by air hose or near the tool throttle lever.
- Store accessories in protective racks or compartments to prevent damage.
- Follow the handling instructions outlined in the operating instructions when carrying the tool and when changing accessories.
- Protect accessories from exposure to water, solvents, high humidity, freezing temperature and extreme temperature changes.

## END OF USE/DISPOSAL

When tool has reached its end of useful service, disassemble tool into its primary components (i.e. steel, aluminum and plastic) and recycle or discard per local, state and/or federal regulations as to not harm the environment.

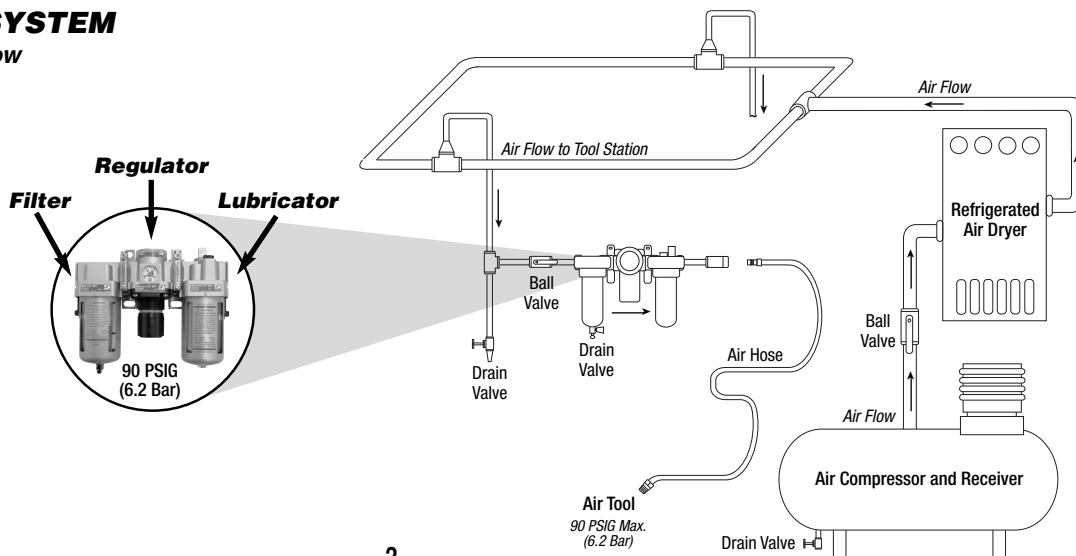
## NOTICE

All Dynabrade air motors use the highest quality parts available and are manufactured to exacting tolerances. Air motor failures are often traced to lack of lubrication or unclean air supply. Compressed air can force dirt and other contaminants into motor bearings causing early failure. Contaminants can score cylinder wall and vanes resulting in reduced efficiency and power. Our warranty obligation is contingent upon proper use of our tools. Air motors which have been subjected to misuse, contaminated air or lack of lubrication will void warranty.

## CLOSED LOOP AIR SYSTEM

### Sloped in Direction of Air Flow

- Dynabrade Air Power Tools are designed to operate at 90 PSIG (6.2 Bar) maximum air pressure at the tool inlet, when the tool is running. Use recommended regulator to control air pressure.
- Ideally the air supply should be free from moisture. To facilitate removing moisture from air supply, the installation of a refrigerated air dryer after the compressor and the use of drain valves at each tool station is recommended.



### Lubricator Setting

1 Drop/Minute per 20 SCFM

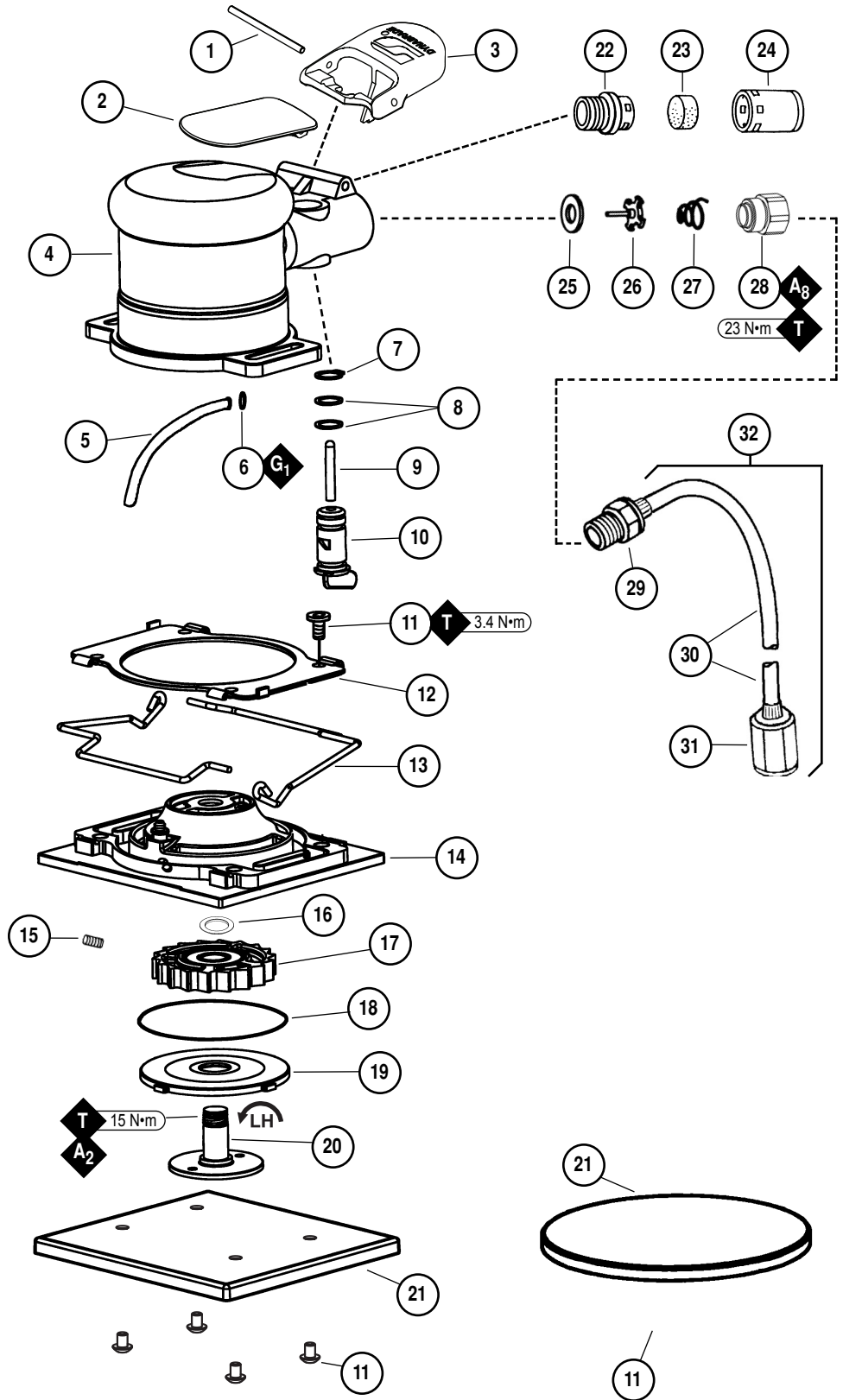
**Models**  
**57920, 57922, 57923, 57924,**  
**57925, 57926, 57927**

# Dynabug® Model "T" Sander Complete Assembly

## Index Key

No. Part # Description

1	94590	Pin
2	57986	Throttle Lever
3	57041	Comfort Platform
4	57921	Housing: 57920
	57963	Housing: 57922
	57964	Housing: 57923
	57967	Housing: 57924
	57941	Housing: 57925
	57911	Housing: 57926
	57912	Housing: 57927
5	57988	Inlet Hose Assembly
6	12156	O-Ring
7	95697	Retaining Ring
8	01025	O-Ring (2)
9	01477	Valve Stem
10	57064	Speed Regulator
11	96492	Button Head Screw (4)
12	57982	Clip Retainer
13	57980	Spring Clip (2) (Model: 57920 Only)
14	<b>Base Plate Assemblies</b>	
	57987	Model: 57920
	57978	Models: 57923, 57925, 57926, 57927
	57943	Models: 57922, 57924
15	96493	Set Screw
16	58092	Spacer
17	57981	Turbine Wheel Assembly
18	97121	O-Ring
19	57983	Base Plate Door
20	57979	Motor Shaft
21	<b>Pads</b>	
	57999	Model: 57920
	56249	Model: 57922
	57998	Model: 57923
	56248	Model: 57924
	56244	Model: 57925
	56269	Model: 57926
	56268	Model: 57927
22	57066	Muffler Body
23	56027	Muffler Insert
24	56028	Muffler Cap
25	01464	Seal
26	01472	Tip Valve
27	01468	Spring
28	01494	Inlet Bushing
29	96457	Male Hose Adapter
30	96458	Hose
31	96456	Female Hose Adapter
32	96455	Hose Assembly



KEY	
<b>G</b>	Grease: G <sub>1</sub> = Lubriplate 630 AA
<b>A</b>	Adhesive: A <sub>2</sub> = Loctite #271 A <sub>8</sub> = Loctite #567
<b>T</b>	Torque: N·m x 8.85 = In. - lbs.



## MACHINE SPECIFICATIONS

Model	Speed	Power	Sound	Air Consumption	Air Pressure	Weight	Length	Height
57920	20,000 RPM	—	83 db(A)	9 SCFM (255 LPM)	90 PSIG (6.2 Bars)	1 lb. (0.5 kg)	5" (127 mm)	3" (76 mm)
57922	20,000 RPM	—	83 db(A)	9 SCFM (255 LPM)	90 PSIG (6.2 Bars)	1 lb. (0.5 kg)	5" (127 mm)	3" (76 mm)
57923	20,000 RPM	—	72 db(A)	9 SCFM (255 LPM)	90 PSIG (6.2 Bars)	1 lb. (0.5 kg)	5" (127 mm)	3" (76 mm)
57924	20,000 RPM	—	72 db(A)	9 SCFM (255 LPM)	90 PSIG (6.2 Bars)	1 lb. (0.5 kg)	5" (127 mm)	3" (76 mm)
57925	20,000 RPM	—	83 db(A)	9 SCFM (255 LPM)	90 PSIG (6.2 Bars)	1 lb. (0.5 kg)	5" (127 mm)	3" (76 mm)
57926	20,000 RPM	—	72 db(A)	9 SCFM (255 LPM)	90 PSIG (6.2 Bars)	1 lb. (0.5 kg)	5" (127 mm)	3" (76 mm)
57927	20,000 RPM	—	72 db(A)	9 SCFM (255 LPM)	90 PSIG (6.2 Bars)	1 lb. (0.5 kg)	5" (127 mm)	3" (76 mm)

Additional Specifications: Air Inlet Thread 1/4" NPT • Hose I.D. 1/4" (6 mm)

Sound Level is the pressure measurement according to the method outlined in ISO regulation ISO-15744

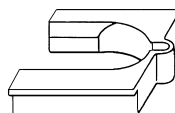
## OPTIONAL ACCESSORIES



### Motor Tune-Up Kit

- Includes assorted parts to help maintain and repair motor.

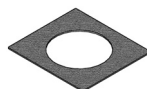
Part No. 96169



### Repair Collar

- Specially designed collar for use in vise to prevent damage to motor housing during disassembly/assembly.

Part No. 57092



### Hook-Face Backing

- A replacement Hook-Face Backing for 57978 Square Base Plate.

Part No. 98846



### Lock Ring Tool

- Lock Ring Tool has a 3/8 in. square socket for use with 3/8 in. drive; breaker bar, ratchet head, or torque wrenches.

Part No. 50971



### 5" Dia. Base Plate Assembly

- 57943 Base Plate with 98848 Hook Facing

Part No. 57997

### Hook Facing

- Fits 57943 Base Plate

Part No. 98848

**Models:**

- 57920** – 4" x 4-5/16" Thin, Vinyl Pad
- 57922** – 5" Dia. Thick, Vinyl Pad
- 57923** – 4-1/4" x 4-1/2" Thick, Hook Pad
- 57924** – 5" Dia. Thick, Hook Pad
- 57925** – 4-1/4" x 4-1/2" Thick, Vinyl Pad
- 57926** – 6" Dia. Thick, Vinyl Pad
- 57927** – 6" Dia. Thick, Hook Pad

# Dynabug "Model T" Sander

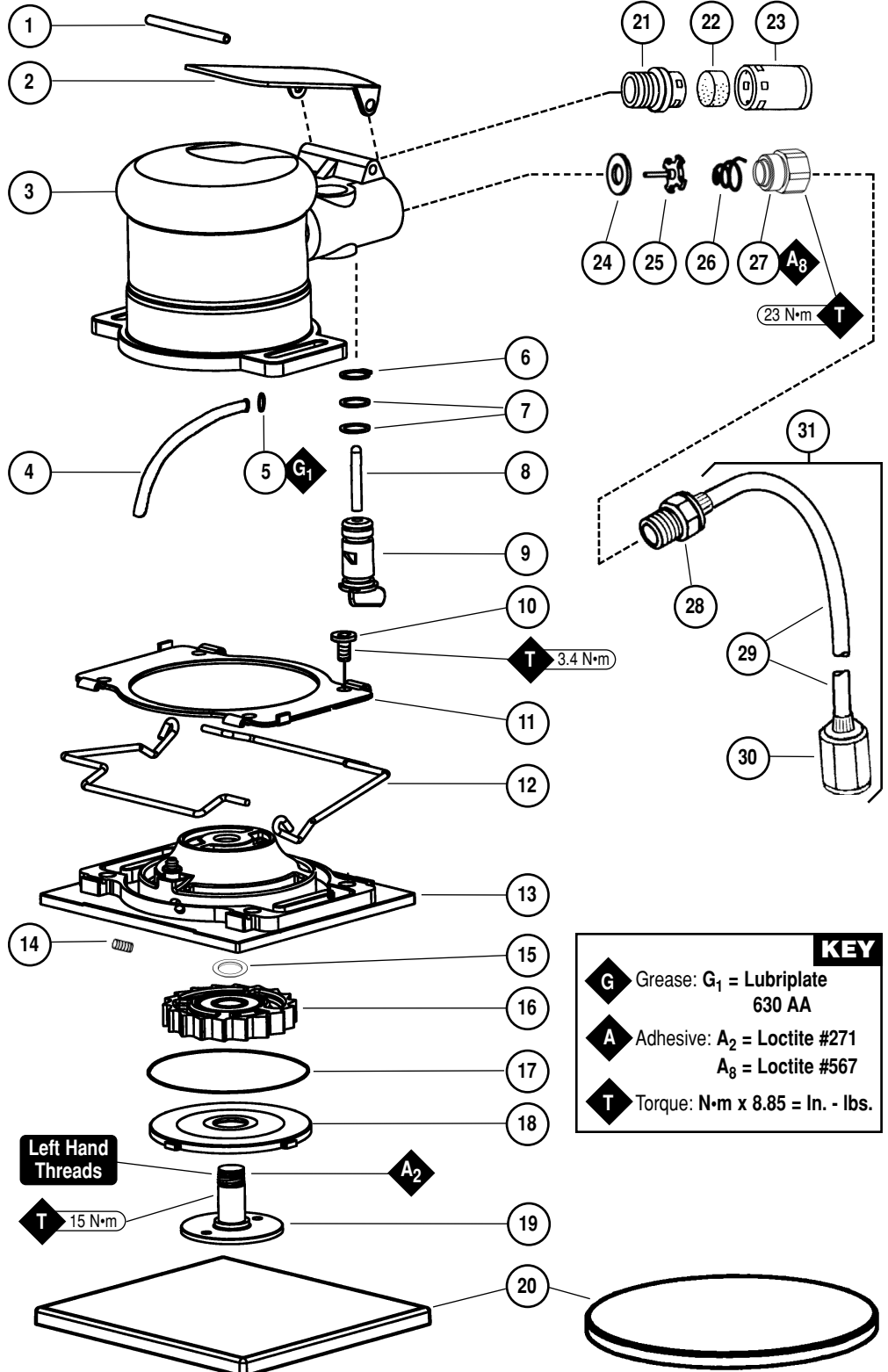
*Air Motor and Machine Parts*

## ! WARNING

Always operate, inspect and maintain this tool in accordance with the Safety Code for portable air tools (ANSI B186.1) and any other applicable safety codes and regulations. Please refer to Dynabrade's Warning/Safety Operating Instructions for more complete safety information.

### Index Key

No.	Part #	Description
1	95979	Pin
2	57986	Lever
3	57921	Housing - 57920
	57963	Housing - 57922
	57964	Housing - 57923
	57967	Housing - 57924
	57941	Housing - 57925
	57911	Housing - 57926
	57912	Housing - 57927
4	57988	Inlet Hose Assembly
5	12156	O-Ring
6	95697	Snap Ring
7	01025	O-Ring (2)
8	01477	Valve Stem
9	57064	Speed Regulator
10	95405	Button Head Screw (4)
11	57982	Clip Retainer
12	57980	Spring Clip (2) (Used On Model-57920 Only)
13	57987	Square Base Plate Assy.
	57997	Round Base Plate Assy.
14	96493	Set Screw
15	58092	Spacer
16	57981	Turbine Wheel Assembly
17	97121	O-Ring
18	57983	Base Plate Door
19	57979	Motor Shaft
20	57999	Vinyl Pad - 57920
	56249	Vinyl Pad - 57922
	57998	Hook Pad - 57923
	56248	Hook Pad - 57924
	56244	Vinyl Pad - 57925
	56269	Vinyl Pad - 57926
	56268	Hook Pad - 57927
21	57066	Muffler Body
22	56027	Muffler Insert
23	56028	Muffler Cap
24	01464	Seal
25	01472	Tip Valve
26	01468	Spring
27	01494	Inlet Bushing
28	96457	Male Hose Adapter
29	96458	Hose
30	96456	Female Hose Adapter
31	96455	Hose Assembly



# **Important Operating, Maintenance and Safety Instructions**

Carefully read all instructions before operating or servicing any Dynabrade® Abrasive Power Tool.

**Warning:** Hand, wrist and arm injury may result from repetitive work motion and overexposure to vibration.

**Important:** Turbine air motor, no oil required.

## **Operating Instructions:**

**Warning:** Eye, face, sound, respiratory and body protection must be worn while operating power tools. Failure to do so may result in serious injury or death. Follow safety procedures posted in workplace.

1. With power source disconnected from tool, securely fasten abrasive/accessory on tool.
2. Install air fitting into inlet bushing of tool. **Important:** Secure inlet bushing of tool with a wrench before attempting to install the air fitting to avoid damaging valve body housing.
3. Connect power source to tool. Be careful not to depress throttle lever in the process.

## **Maintenance Instructions:**

1. Check tool speed regularly with a tachometer. If tool is operating at a higher speed than the RPM marked on the tool, the tool should be serviced to correct the cause before use.
2. Some silencers on air tools may clog with use. Clean and replace as required.
3. An Air Line Filter-Regulator must be used with this air tool to maintain all warranties. Dynabrade recommends the following: **11402** Air Line Filter-Regulator – Provides accurate air pressure regulation, two-stage filtration of water contaminants. Operates 40 SCFM @ 100 PSIG and has 3/8" NPT female ports.
4. Use only genuine Dynabrade replacement parts. To reorder replacement parts, specify the **Model #, Serial #, and RPM** of your machine.
5. A Motor Tune-Up Kit (P/N **96169**) is available which includes assorted parts to help maintain motor in peak operating condition. Please refer to Dynabrade's Preventative Maintenance Schedule for a guide to expectant life of component parts.
6. Mineral spirits are recommended when cleaning the tool and parts. Do not clean tool or parts with any solvents or oils containing acids, esters, ketones, chlorinated hydrocarbons or nitro carbons.

## **Safety Instructions:**

Products offered by Dynabrade should not be converted or otherwise altered from original design without expressed written consent from Dynabrade, Inc.



- **Important:** User of tool is responsible for following accepted safety codes such as those published by the American National Standards Institute (ANSI).
- Always disconnect power supply before changing abrasive/accessory or making machine adjustments.
- Inspect abrasives/accessories for damage or defects prior to installation on tools.
- Please refer to Dynabrade's Warning/Safety Operating Instructions Tag (Reorder No. **95903**) for more complete safety information.

## **Notice**

All Dynabrade motors use the highest quality parts and metals available and are machined to exacting tolerances. The failure of quality pneumatic motors can most often be traced to an unclean air supply or the lack of lubrication. Air pressure easily forces dirt or water contained in the air supply into motor bearings causing early failure. It often scores the cylinder walls and the rotor blades resulting in limited efficiency and power. Our warranty obligation is contingent upon proper use of our tools and cannot apply to equipment which has been subjected to misuse such as unclean air, wet air or a lack of lubrication during the use of this tool.

# Motor Assembly/Disassembly Instructions – “Model T” Dynabug

**Important: Manufacturers warranty is void if tool is disassembled before warranty expires.**

A complete Repair Kit, part number **96169**, is available which includes special tools for correct disassembly/assembly of tool.

## To Disassemble

1. Disconnect tool from power source.
2. Unhook **57980** Spring Clips and remove sanding pad (if necessary).
3. Unscrew **95405** Button Head Screws (4).
4. Remove **57980** Spring Clips (if equipped) and lift **57982** Clip Retainer up about 1/2", to expose **57987** or **57997** Base Plate Assembly.
5. Remove **57988** Hose from **57987** or **57997** Base Plate Assembly.
6. Disassemble housing assembly from base plate assembly, by pulling apart.
7. Invert assembly and insert adjustable pin spanner wrench or **50971** Lock Ring Wrench to **57979** Motor Shaft, and remove (left-hand threads).
8. Remove **58092** Spacer from motor shaft. **Note:** Spacer orientation on motor shaft.
9. Remove **57981** Turbine Wheel Assembly. **Note:** Turbine orientation of wheel assembly on motor shaft.

## To Assemble:

**Important:** Be certain parts are clean and in good repair before assembling.

1. Slide **57983** Base Plate Door onto **57979** Motor Shaft.
2. Replace **57981** Turbine Wheel Assembly on motor shaft using the same orientation as when it was disassembled.
3. Replace **58092** Spacer on motor shaft using the same orientation as when motor was disassembled.
4. Install **97121** O-Ring onto base plate assembly.
5. Apply a slight amount of #271 Loctite® (or equivalent) to threads of **57979** Motor Shaft and install onto base plate assembly, torque 15 N•m/133 in. - lbs.
6. Install **57988** Inlet Hose assembly into housing. Apply some grease to **12156** O-Ring and install.  
**Note:** Speed regulator should be installed at this time. Slide other end of tube over barb fitting in base plate.
7. Install housing assembly onto base plate assembly.
8. Install **57980** Spring Clips onto base plate assembly (if necessary).
9. Slide **57982** Clip Retainer down onto **57987** or **57997** Base Plate Assembly and install **95405** Button Head Screws (4), torque 3.4 N•m/20 in. - lbs.

**Tool Assembly Complete. Please allow 30 minutes for adhesives to cure before operating tool.**

## Valve and Speed Regulator Assemblies:

1. Secure housing in vice using **57092** Collar or padded jaws.
2. Remove inlet bushing, **01468** Spring, **01472** Tip Valve and **01464** Seal from housing.
3. Remove **95697** Snap Ring. Push the speed regulator and valve stem out of the housing. Remove the **01025** O-Rings (2).
4. Place new **01025** O-Rings (2) on the speed regulator and place in housing with valve stem. Install new **95697** Snap Ring.
5. Place new **01464** Seal in housing, Using tweezers or needle nose pliers, place the tip valve into housing so that the pin goes through the hole in the valve stem. Place new **01468** Spring into housing so small end is towards tip valve.
6. Spread 1 drop of #567 Loctite® (or equivalent) around the threads of the inlet bushing and tighten into housing to 23 N•m/200 in. - lbs.

**Note:** This tool is an oil-free Dynabrade Tool. Therefore no air lube should be placed into the tool. Operate the machine for approximately 30 seconds before application to workpiece to determine if machine is working properly and safely.

Loctite® is a registered trademark of the Loctite Corp.

## Machine Specifications

Model Number	Motor HP (W)	Motor RPM	Sound Level	Air Flow Rate CFM/SCFM (LPM)	Air Pressure PSIG (Bars)	Air Inlet Thread	Weight Pound (kg)	Length Inch (mm)	Height Inch (mm)
57920	N/A	20,000	83 dB(A)	1/9 (255)	90 (6.2)	1/4" NPT	1 (.45)	5 (127)	3 (76)
57922	N/A	20,000	83 dB(A)	1/9 (255)	90 (6.2)	1/4" NPT	1 (.45)	5 (127)	3 (76)
57923	N/A	20,000	72 dB(A)	1/9 (255)	90 (6.2)	1/4" NPT	1 (.5)	5 (127)	3 (76)
57924	N/A	20,000	72 dB(A)	1/9 (255)	90 (6.2)	1/4" NPT	1 (.5)	5 (127)	3 (76)
57925	N/A	20,000	83 dB(A)	1/9 (255)	90 (6.2)	1/4" NPT	1 (.45)	5 (127)	3 (76)
57926	N/A	20,000	72 dB(A)	1/9 (255)	90 (6.2)	1/4" NPT	1 (.5)	5 (127)	3 (76)
57927	N/A	20,000	72 dB(A)	1/9 (255)	90 (6.2)	1/4" NPT	1 (.5)	5 (127)	3 (76)

Additional Specifications: Hose I.D. Size 1/4" (8 mm)

## Optional Accessories

### Coated Abrasive Sheets & Discs For Dynabug "Model T" Finishing Sanders

#### 5" (127mm) Diameter PSA & Hook-Face Discs

##### Aluminum Oxide Discs / Reattachable

Abrasive Grit			125 Discs = Unit.
36	40	60	
93311	93312	93313	

##### Premium Aluminum Oxide Discs / PSA Mounted

Abrasive Grit					
80	100	120	150	180	220
93101	93102	93103	93104	93105	93106

120 Grit & Coarser – 125/Roll; 10 Rolls = Unit. 150 Grit & Finer – 175/Roll; 6 Rolls = Unit. Complete rolls only. **Note:** Other grits available upon request.

##### Silicon Carbide Discs / PSA Mounted

Abrasive Grit					
80	100	120	150	180	220
93051	93052	93053	93054	93055	93056

120 Grit & Coarser – 125/Roll; 8 Rolls = Unit. 150 Grit & Finer – 250/Roll; 4 Rolls = Unit. Complete rolls only. **Note:** Other grits available upon request.

#### 6" (152mm) Diameter PSA & Hook-Face Discs

##### Premium Aluminum Oxide Discs / PSA Mounted

Abrasive Grit					
80	100	120	150	180	220
93209	93200	93201	93202	93203	93204

120 Grit & Coarser – 125/Roll; 10 Rolls = Unit. 150 Grit & Finer – 175/Roll; 6 Rolls = Unit. Complete rolls only. **Note:** Other grits available upon request.

##### Silicon Carbide Discs / PSA Mounted

Abrasive Grit					
80	100	120	150	180	220
93069	93070	93071	93072	93073	93074

120 Grit & Coarser – 125/Roll; 8 Rolls = Unit. 150 Grit & Finer – 250/Roll; 4 Rolls = Unit. Complete rolls only. **Note:** Other grits available upon request.

#### Reattachable & Non-Adhesive Abrasive Sheets

##### Coated Aluminum Oxide Sheet Abrasives

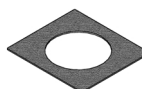
Sheet Size	Description	Abrasive Grit			
		80	120	180	320
4-1/2" (114mm) x 4-1/4" (108mm)	PSA w/Liner	93840	93841	93842	93843
4-1/2" (114mm) x 4-1/4" (108mm)	Hook-Face	93850	93851	93852	93853
4-1/2" (114mm) x 5-1/2" (140mm)	No Adhesive	93854	93855	93856	93857

Unit = 100 Sheets



#### 96169 Motor Tune-Up Kit

- Includes assorted parts to help maintain and repair motor.



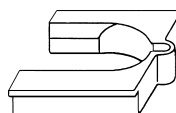
#### 98846 Hook-Face Backing

- A replacement Hook-Face Backing for 57978 Square Base Plate.



#### 98848 Hook-Face Backing

- A replacement Hook-Face Backing for 57943 Round Base Plate.



#### 57092 Repair Collar

- Specially designed collar for use in vise to prevent damage to motor housing during disassembly/assembly.



#### 50971 Lock Ring Tool

- Lock Ring Tool has a 3/8 in. square socket for use with 3/8 in. drive; breaker bar, ratchet head, or torque wrenches.