

# 3" Extension Cut-Off Tool

## .5 hp/Right Angle/20,000RPM

**Model: 18075**

*Air Motor and Machine Parts*

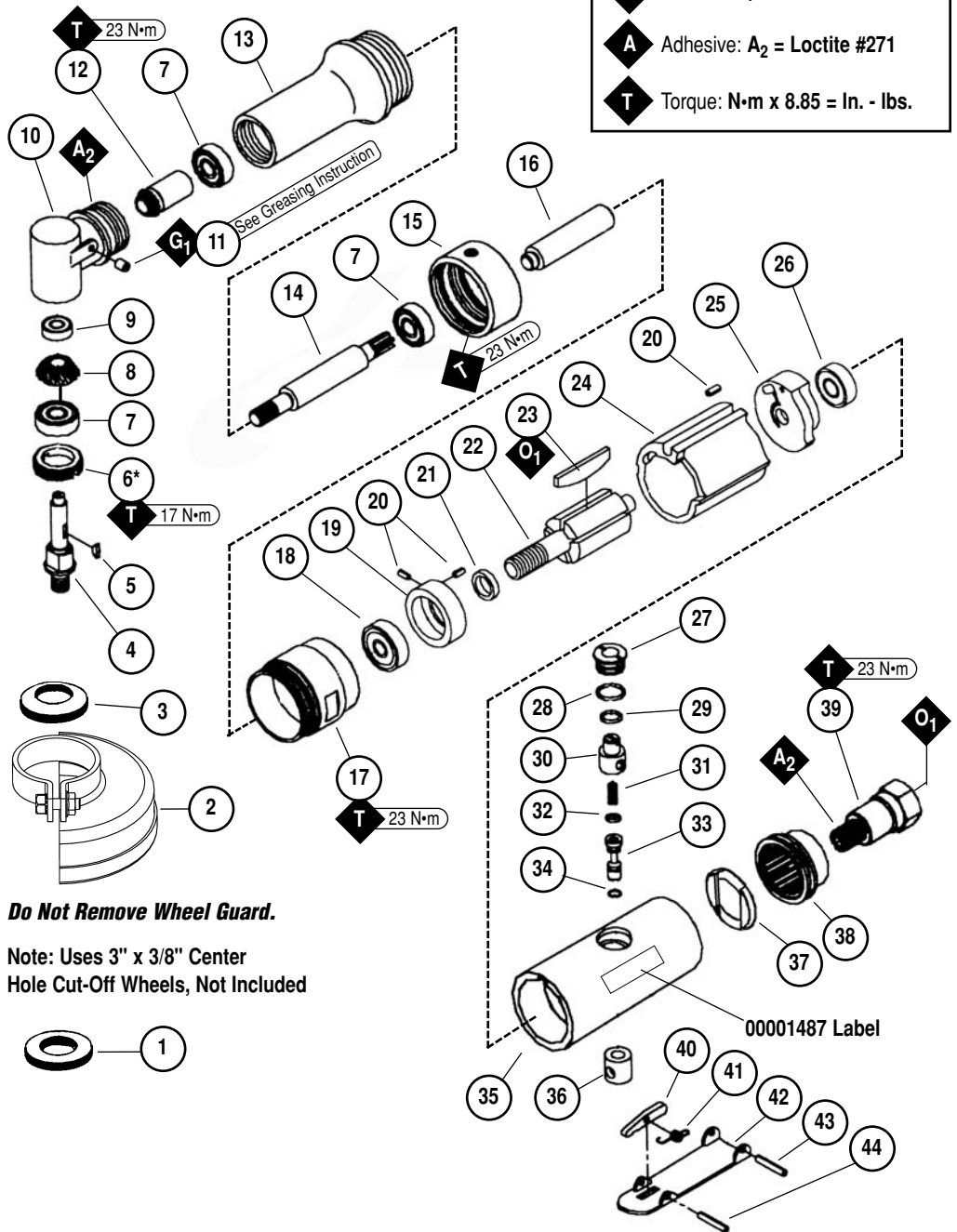
### ! WARNING

Always operate, inspect and maintain this tool in accordance with the Safety Code for portable air tools (ANSI B186.1) and any other applicable safety codes and regulations. Please refer to Dynabrade's Warning/Safety Operating Instructions for more complete safety information.

#### Index Key

No.	Part #	Description
1	18283	Locking Flange
2	18857	Guard Assembly
3	18282	Backing Flange
4	18284	Spindle
5	18285	Key
6	18441	Clamp Nut
7	18428	Ball Bearing (3)
8	18267	Bevel Gear
9	18421	Bearing
10	18747	Angle Head Housing
11	18447	Grease Fitting
12	18268	Pinion
13	18745	Socket
14	18746	Transmission Shaft
15	18744	Coupling
16	18855	Coupler Shaft/Rotor Nut
17	18856	Motor Lock Ring
18	18827	Bearing
19	18842	Front End Plate
20	18821	Pin (3)
21	18825	Rotor Spacer
22	18824	Rotor
23	18823	Rotor Blade (4/pkg.)
24	18822	Cylinder
25	18820	Rear End Plate
26	18819	Bearing
27	18811	Valve Screw
28	18810	O-Ring
29	18809	O-Ring
30	18808	Regulator
31	18807	Spring
32	18806	O-Ring
33	18804	Valve Stem
34	18805	O-Ring
35	18801	Housing
36	18802	Valve Bushing
37	18816	Silencer
38	18817	Deflector
39	18818	Air Inlet
40	18813	Stop Rod
41	18814	Safety Lever Spring
42	18812	Throttle Lever
43	18803	Lever Pin
44	18815	Spring Pin

KEY	
<b>O</b>	Oil: O <sub>1</sub> = Air Lube
<b>G</b>	Grease: G <sub>1</sub> = Lubriplate 630AA
<b>A</b>	Adhesive: A <sub>2</sub> = Loctite #271
<b>T</b>	Torque: N•m x 8.85 = In. - lbs.



**Do Not Remove Wheel Guard.**

**Note: Uses 3" x 3/8" Center Hole Cut-Off Wheels, Not Included**

\* Part Involves Left Hand Threads.

See reverse side for Important Operating, Maintenance and Safety Instructions.

# Autobrade Red Important Operating, Maintenance and Safety Instructions

Carefully read all instructions before operating or servicing any Dynabrade® Abrasive Power Tool.

**Warning:** Hand, wrist and arm injury may result from repetitive work motion and overexposure to vibration.

**Important:** All Dynabrade air tools must be used with a Filter-Regulator-Lubricator to maintain all warranties.

## Operating Instructions:

**Warning:** Eye, face, respiratory, sound and body protection must be worn while operating power tools. Failure to do so may result in serious injury or death. Follow safety procedures posted in workplace.

1. With power source disconnected from tool, securely fasten abrasive/accessory on tool.
2. Install air fitting into inlet bushing of tool. **Important:** Secure inlet bushing of tool with a wrench before attempting to install the air fitting to avoid damaging valve body housing.
3. Connect power source to tool. Be careful not to depress throttle lever in the process.
4. Check tool speed with tachometer. If tool is operating at a higher speed than the RPM marked on the tool or operating improperly, the tool should be serviced to correct the cause before use.
5. Air tools are intended for use in explosive atmospheres and are not insulated for contact with electrical power sources. Sanding/Grinding certain materials can create explosive dust. It is the employers responsibility to notify the user of acceptable dust levels. Sanding/Grinding can cause sparks which can cause fires or explosions. It is the users responsibility to make sure the work area is free of flammable materials.

## Maintenance Instructions:

1. Check tool speed regularly with a tachometer. If tool is operating at a higher speed than the RPM marked on the tool, the tool should be serviced to correct the cause before use.
2. Some silencers on air tools may clog with use. Clean and replace as required.
3. All Dynabrade rotary vane style air motors should be lubricated. Dynabrade recommends one drop of air lube per minute for each 20 SCFM (example: if the tool specifications state 40 SCFM, set the drip rate of your filter-lubricator at 2 drops per minute). Dynabrade Air Lube (P/N **95842**: 1 pt. 473 ml.) is recommended.
4. An Air Line Filter-Regulator-Lubricator must be used with this air tool to maintain all warranties. Dynabrade recommends the following: **10681** Air Line Filter-Regulator-Lubricator — Provides accurate air pressure regulation, two-stage filtration of water contaminants and micro-mist lubrication of pneumatic components.
5. Use only genuine Dynabrade replacement parts. To reorder replacement parts, specify the **Model #**, **Serial #**, and **RPM** of your machine.
6. Mineral spirits are recommended when cleaning the tool and parts. Do not clean tool or parts with any solvents or oils containing acids, esters, keytones, chlorinated hydrocarbons or nitro carbons.
7. DO NOT clean or maintain air tools with chemicals that have a low flash point (example: WD-40®).
8. **GREASE INSTRUCTION:** Lubricate the bevel gears through the grease fitting located in the **18747** Angle Head Assembly. **Apply 3 plunges\* for every 40 hours of use, to achieve maximum gear life.** (\*order **95542** Grease and **95541** Gun)

## Safety Instructions:

Products offered by Dynabrade should not be converted or otherwise altered from original design without expressed written consent from Dynabrade, Inc.



- **Important:** User of tool is responsible for following accepted safety codes such as those published by the American National Standards Institute (ANSI).
- Operate machine for one minute before application to workpiece to determine if machine is working properly and safely before work begins.
- Always disconnect power supply before changing abrasive/accessory or making machine adjustments.
- Inspect abrasives/accessories for damage or defects prior to installation on tools.
- Please refer to Dynabrade's Warning/Safety Operating Instructions Tag (Reorder No. **95903**) for more complete safety information.
- **Warning:** Hand, wrist and arm injury may result from repetitive work, motion and overexposure to vibration.

## Autobrade Red Tool Warranty

Following the reasonable assumption that any inherent defect which might prevail in a product will become apparent to the user within **6 months** from the date of purchase, "Autobrade Red" tools are warranted against defects in workmanship and materials under normal use and service.

**We shall, at our option, repair or replace at our factory, any "Autobrade Red" tool which shall, within 6 months after delivery to the original purchaser, indicate upon our examination to have been defective.**

Our obligation is contingent upon proper use of "Autobrade Red" tools in accordance with factory recommendations, instructions and practices.

**The warranty shall not apply in these cases:**

1. Normally wearable parts such as bearings, rotor blades, etc.
2. Consumables such as sanding pads, etc.
3. Misuse, neglect in maintaining tool or tool modification.
4. Lack of lubrication or evidence of rust, dirt or corrosion.
5. Tools requiring normal tune-up or cleaning.
6. Tools being used after they are badly worn such as using ratchet with worn yoke.
7. Ratchets, anvils damaged by excessive hand torquing.
8. Use in production-type applications.

Products to be considered for warranty must be sent back to our factory, transportation prepaid by the user. Please send tool back to attention of "Repair Department" with note fully explaining the nature of the problem along with a copy of original invoice indicating model and serial number.



# 96665 Tune-Up Kit

**For use with Model 18075**

*Air Motor and Machine Parts*

**Index Key**

No.	Part #	Description
1	18428	Ball Bearing (3)
2	18421	Bearing
3	18827	Bearing
4	18823	Rotor Blade (4/pkg.)
5	18819	Bearing
6	18810	O-Ring
7	18809	O-Ring
8	18807	Spring
9	18806	O-Ring
10	18804	Valve Stem
11	18805	O-Ring
12	18816	Silencer

