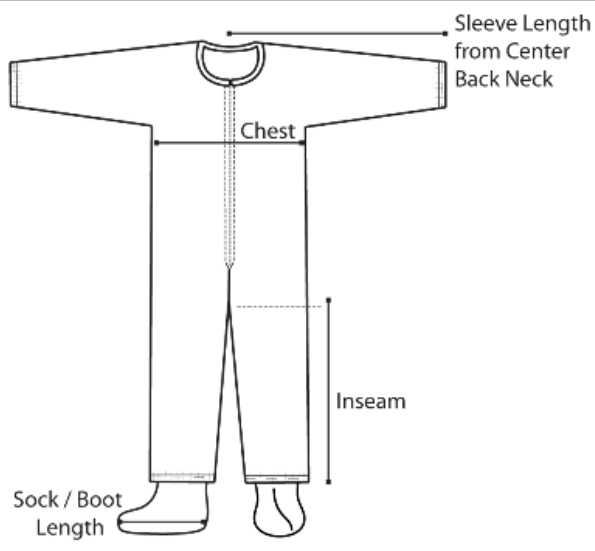


# DUPONT™ TYCHEM® 4000

## SL125T WH

### GARMENT TECHNICAL DATA SHEET



This picture is for measurement reference only.

#### PRODUCT INFORMATION

**ATTRIBUTES** DuPont™ Tychem® 4000 Coverall. Collar. Elastic Wrists and Ankles. Storm Flap with Adhesive Closure. Taped Seams. White.

**SL125TWHxx0006yy** (xx=size;yy=option code)

**CATALOG NUMBER** ?

When ordering, replace xx with desired size.

| FABRIC / MATERIAL | DESIGN                                | SEAM  | COLOR | QUANTITY/BOX | SIZES                      | OPTION CODES |
|-------------------|---------------------------------------|-------|-------|--------------|----------------------------|--------------|
| Tychem® 4000      | Coverall w/ Elastic Wrists and Ankles | Taped | White | 6 per case   | MD, LG, XL, 2X, 3X, 4X, 5X | 00           |

#### TYPICAL FINISHED DIMENSIONS

| SIZE | SLEEVE LENGTH | CHEST WIDTH | INSEAM | FITS CHEST      | FITS HEIGHT  | INNER GLOVE SIZE | OUTER GLOVE SIZE |
|------|---------------|-------------|--------|-----------------|--------------|------------------|------------------|
| MD   | 33 3/4        | 24 1/4      | 27 1/2 | 35 1/4 - 38 3/4 | 5'3" - 5'7"  | n/a              | n/a              |
| LG   | 35            | 25 3/4      | 28 1/2 | 38 1/4 - 41 3/4 | 5'5" - 5'9"  | n/a              | n/a              |
| XL   | 36 1/2        | 27 1/4      | 29     | 41 1/4 - 44 3/4 | 5'8" - 6'2"  | n/a              | n/a              |
| 2X   | 38 1/4        | 28 3/4      | 30     | 44 1/4 - 47 3/4 | 6'0" - 6'4"  | n/a              | n/a              |
| 3X   | 38 1/2        | 30 1/4      | 31     | 47 1/4 - 50 3/4 | 6'2" - 6'4"  | n/a              | n/a              |
| 4X   | 39 1/2        | 31 3/4      | 32     | 50 1/4 - 53 3/4 | 6'4" - 6'7"  | n/a              | n/a              |
| 5X   | 40 1/2        | 33 1/2      | 33     | 53 3/4 - 57 1/4 | 6'7" - 6'10" | n/a              | n/a              |

#### PHYSICAL PROPERTIES - FABRIC DATA

Typical values, not specifications.

| PROPERTY                      | TEST METHOD   | RESULT                 |
|-------------------------------|---------------|------------------------|
| Thickness                     | ASTM D1777    | 12 mils                |
| Basis Weight                  | ASTM D3776    | 3.6 oz/yd <sup>2</sup> |
| Burst Strength - Mullen       | ASTM D3786    | 71 psi                 |
| Breaking Strength - Grab (MD) | ASTM D5034    | 44 lb <sub>f</sub>     |
| Breaking Strength - Grab (CD) | ASTM D5034    | 48 lb <sub>f</sub>     |
| Wearing Apparel Flammability  | 16 CFR 1610 ? | Class 1                |

Seams and closures have less barrier than fabric. Note: for protection from hazardous or infectious liquids, additional barrier tests are required to establish suitability for use. CAUTION: This information is based upon technical data that DuPont believes to be reliable. It is subject to revision as additional knowledge and experience are gained. DuPont makes no guarantee of results and assumes no obligation or liability in connection with this information. It is the user's responsibility to determine the level of toxicity and the proper personal protective equipment needed. The information set forth herein reflects laboratory performance of fabrics, not complete garments, under controlled conditions. It is intended for information use by persons having technical skill for evaluation under the specific end-use conditions, at their own discretion and risk. Anyone intending to use this information should first verify that the garment selected is suitable for the intended use. In many cases, seams and closures may provide less barrier than the fabric. If the fabric becomes torn, abraded, or punctured, end-user should discontinue use of garment to avoid compromising the barrier protection. **SINCE CONDITIONS OF USE ARE OUTSIDE OUR CONTROL, WE MAKE NO WARRANTIES, EXPRESSED OR IMPLIED, INCLUDING WITHOUT LIMITATION NO WARRANTIES OF MERCHANTABILITY OR FITNESS FOR A PARTICULAR USE AND ASSUME NO LIABILITY IN CONNECTION WITH ANY OF THIS INFORMATION.** This information is not intended as a license to operate under or a recommendation to infringe any patent, trademark or technical information of DuPont or others covering any material or its use. Data presented does not comprise a product specification.

**Warning:** Cleanroom apparel should not be used around heat, flames, sparks or in potentially flammable or explosive environments. Cleanroom fabrics should have slip-resistant materials on the outer sole of boots, shoe covers, or other garment surfaces in conditions where slipping could occur.

**Silicone Statement:** In the past, DuPont has found that threads and zippers can be the most significant source of silicone oil contamination in garments. DuPont specifies that thread and zippers used in DuPont™ Tyvek® IsoClean® and ProClean® garments be manufactured without the use of silicone oils. For end users with concerns about contamination with silicone oils or any other contaminants, the best practice is to audit inbound materials, including garments, for those contaminants.

**Latex Statement:** As of January 1, 2006, DuPont production specifications exclude use of components containing natural rubber latex in the manufacture of DuPont™ Tyvek® IsoClean® and ProClean® garments. Anyone who begins to exhibit allergic response during the use of DuPont products should immediately cease using these products.

Measurements are approximate values intended to assist in proper size selection. Normal variability may result in slight differences in actual garment sizes.